



**TRILOBITE TESTING, INC.**

# DRILL STEM TEST REPORT

Forestar Petroleum Corp  
 1801 Broadway #900  
 Denver, Colo  
 80202  
 ATTN: Charlie Sturdavant

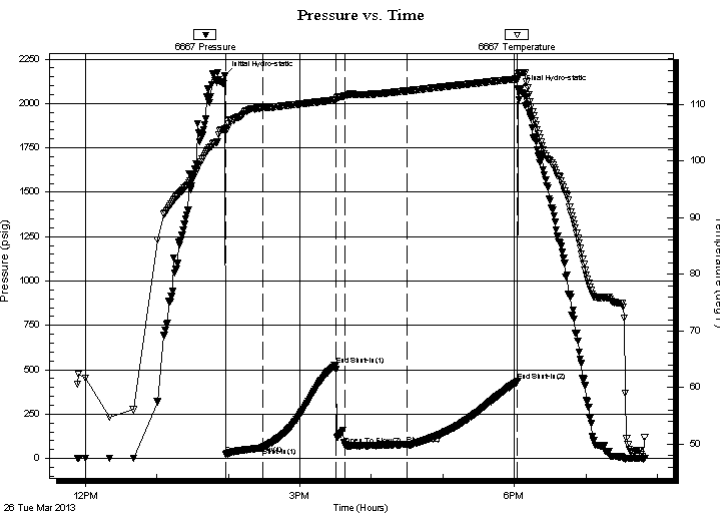
**15-17s-29w Lane, Ks**  
**Grace Elaine #1-15**  
 Job Ticket: 49179 **DST#: 4**  
 Test Start: 2013.03.26 @ 11:53:40

## GENERAL INFORMATION:

Formation: **Ft Scott**  
 Deviated: No Whipstock: 0.00 ft (KB)  
 Time Tool Opened: 13:57:40  
 Time Test Ended: 19:49:40  
 Interval: **4368.00 ft (KB) To 4460.00 ft (KB) (TVD)**  
 Total Depth: 4460.00 ft (KB) (TVD)  
 Hole Diameter: 7.88 inches Hole Condition: Fair  
 Test Type: Conventional Bottom Hole (Reset)  
 Tester: Shane McBride  
 Unit No: 55  
 Reference Elevations: 2796.00 ft (KB)  
 2791.00 ft (CF)  
 KB to GR/CF: 5.00 ft

**Serial #: 6667 Inside**  
 Press @ Run Depth: 79.45 psig @ 4369.00 ft (KB) Capacity: 8000.00 psig  
 Start Date: 2013.03.26 End Date: 2013.03.26 Last Calib.: 2013.03.26  
 Start Time: 11:53:40 End Time: 19:49:40 Time On Btm: 2013.03.26 @ 13:57:10  
 Time Off Btm: 2013.03.26 @ 18:03:40

TEST COMMENT: 1/1/2" in blow  
 No return  
 5 1/2" in blow  
 No return



## PRESSURE SUMMARY

Time (Min.)	Pressure (psig)	Temp (deg F)	Annotation
0	2154.59	105.72	Initial Hydro-static
1	22.15	105.46	Open To Flow (1)
32	61.99	109.49	Shut-In(1)
93	527.18	110.73	End Shut-In(1)
101	77.92	111.50	Open To Flow (2)
153	79.45	112.35	Shut-In(2)
246	434.62	114.45	End Shut-In(2)
247	2080.54	115.34	Final Hydro-static

## Recovery

Length (ft)	Description	Volume (bbl)
62.00	s g h o c m 5g 30o 65m	0.30
82.00	s g o c m 5g 10o 85m	0.59
0.00	40' very weak gas in pipe	0.00

## Gas Rates

Choke (inches)	Pressure (psig)	Gas Rate (Mcf/d)

\* Recovery from multiple tests



**TRILOBITE  
TESTING, INC.**

# DRILL STEM TEST REPORT

**FLUID SUMMARY**

Forestar Petroleum Corp

**15-17s-29w Lane, Ks**

1801 Broadway #900  
Denver, Colo  
80202

**Grace Elaine #1-15**

Job Ticket: 49179

**DST#: 4**

ATTN: Charlie Sturdavant

Test Start: 2013.03.26 @ 11:53:40

## Mud and Cushion Information

Mud Type: Gel Chem

Cushion Type:

Oil API:

0 deg API

Mud Weight: 9.00 lb/gal

Cushion Length:

ft

Water Salinity:

0 ppm

Viscosity: 52.00 sec/qt

Cushion Volume:

bbbl

Water Loss: 5.60 in<sup>3</sup>

Gas Cushion Type:

Resistivity: 0.00 ohm.m

Gas Cushion Pressure:

psig

Salinity: 1800.00 ppm

Filter Cake: 1.00 inches

## Recovery Information

Recovery Table

Length ft	Description	Volume bbl
62.00	s g h o c m 5g 30o 65m	0.305
82.00	s g o c m 5g 10o 85m	0.585
0.00	40' very weak gas in pipe	0.000

Total Length: 144.00 ft

Total Volume: 0.890 bbl

Num Fluid Samples: 0

Num Gas Bombs: 0

Serial #:

Laboratory Name:

Laboratory Location:

Recovery Comments:

# Pressure vs. Time

