

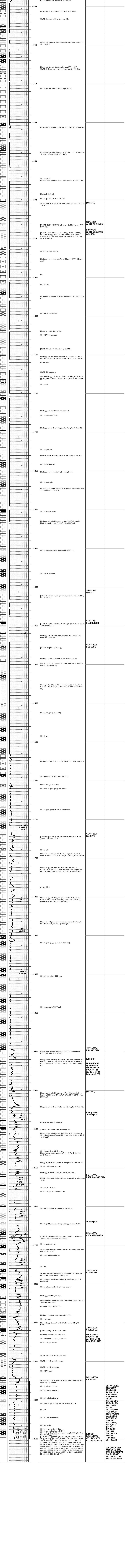
GEOLOGIST'S REPORT
DRILLING TIME AND SAMPLE LOG

COMPANY VESS OIL CORPORATION		ELEVATIONS	
LEASE WILSON 'A' #447	FIELD EL DORADO	KB 1368'	GL 1362'
LOCATION 990' FNL 1940' FWL	SECTION 9	Measurements Are All From KB	
TOWNSHIP 25S	RANGE 05E	API 15-015-23968	
COUNTY BUTLER	STATE KANSAS		
CONTRACTOR C&G DRILLING, Rig #1		CASING	
SPUD 04/08/2013	COMP 04/13/2013	SURFACE 5 1/2 x 8-5/8" 2 3/8" I.D.	
RTD 2500' (-1132)	LTD 2501' (-1133)	set @ 263' KB w/150 sx Class A	
ELECTRICAL SURVEYS Dynalog: Cased Hole		PRODUCTION 60 lbs 5-1/2" 15.58"/ft set @ 2493' w/125 sx Thickset	

FORMATION TOPS	LOG	SAMPLES	CHRONOLOGY
Admin 650'		NP	04082013: MRRU C&G Drilling, Rig #1 Drill ratehole @ 10:30 AM SPUD 12:14P hole @ 12:50 PM
Admin 650'		NP	TD 12:14P hole @ 205' Run 6 to 8-5/8" 2 3/8" I.D.
Bullington	837' (+431)	839' (+430)	spg 252' set @ 263' KB, Consolidated Cement w/250' class A, 5% oil, good cement. Plug down @ 11:30 PM 04/08/2013.
White Cloud Lm	929' (+442)	930' (+438)	
White Cloud S4	941' (+422)	942' (+433)	
Opoka	1001' (+277)	1009' (+275)	04092013: WDC @ 294' Drill cut @ 7:30 AM
Dreaglar	1402' (+35)	1403' (+41)	Drilling w/PDC bit
Heckers	1559' (+71)	1569' (+77)	
Dreaglar	1807' (+101)	1479' (+108)	04102013: Drillina @ 1894' Mudded sp @ 1700'
Heckers	NP	NP	PDC bit had good samples, but not enough to analyze
Lansing	1719' (+350)	1720' (+352)	upbit tops, MNE 9.0, VLS-36, WL-14
Kansas City	1997' (+29)	1997' (+259)	Bit trip @ 2089'
Kansas City	2159' (+78)	2161' (+75)	
Checkboard	2232' (+86)	2230' (+88)	04112013: Drig @ 2310'
Heckers	NP	NP	
Altamont	2282' (+90)	2284' (+91)	04122013: TD @ 2500' Tip in hole w/DSF #1
Panola	2319' (+95)	2319' (+257)	2429-2500' MNE 9.0, VLS-36, WL-14
Cherokee	2356' (+92)	2356' (+90)	@ 2500' hole. Lay down on way out.
Ardmore	2419' (+1051)	2422' (+1054)	
Veolia	2486' (+1130)	2486' (+1130)	04132013: Ran 6-1/2" casing to 1' above T5
RTD LTD	2501' (+1133)	2500' (+1132)	Casing tally matches RTD. CASINO JOB: Ran 6" @ 10' 12" 15-5/8, 2-55' 1-1/2" Csg. Jally 2493' @ 2500' set @ 2493' Put on 6" centralizers & 1' above consolidation cement pump. 500' put mud pump. Cemented w/125 sx thickest cement. Caught pressure @ 37' 8" Bbl. Good core of mud. LCM pressure @ 2500' Release casing. Lend plug @ 2500' @ 10:30 PM 04/12/2013. Release. It held. Set slips. Not off casing.

REMARKS: ** Cased hole Elog by R.F. Ramondetta, Geologist, UOC

Respectfully submitted,
Roger L. Martin, Geologist (WV6165)



VESS OIL CORP
WILSON 'A' #447
990' FNL & 1940' FWL
SEC 9-25S-05E
BUTLER CO., KS
API 15-015-23968