

DIAMOND TESTING, LLC
P.O. Box 157
HOISINGTON, KANSAS 67544
(620) 653-7550 • (800) 542-7313
WisnA447DST1

Company Vess Oil Corporation Lease & Well No. Wilson A No. 447
Elevation 1368 KB Formation Viola Effective Pay Ft. Ticket No. M489
Date 4-12-13 Sec. 9 Twp. 25S Range 5E County Butler State Kansas
Test Approved By Roger L. Martin Diamond Representative Mike Cochran

Formation Test No. 1 Interval Tested from 2,425 ft. to 2,500 ft. Total Depth 2,500 ft.
Packer Depth 2,420 ft. Size 6 3/4 in. Packer Depth ft. Size in.
Packer Depth 2,425 ft. Size 6 3/4 in. Packer Depth ft. Size in.
Depth of Selective Zone Set ft.

Top Recorder Depth (Inside) 2,427 ft. Recorder Number 0063 Cap. 6,000 psi.
Bottom Recorder Depth (Outside) 2,497 ft. Recorder Number 6884 Cap. 6,275 psi.
Below Straddle Recorder Depth ft. Recorder Number Cap. psi.

Drilling Contractor C & G Drilling Company - Rig 1 Drill Collar Length 119 ft I.D. 2 1/4 in.
Mud Type Chemical Viscosity 48 Weight Pipe Length ft I.D. in.
Weight 9.3 Water Loss 10.2 cc. Drill Pipe Length 2,286 ft I.D. 3 1/2 in.
Chlorides 1,300 P.P.M. Test Tool Length 20 ft Tool Size 3 1/2-IF in.
Jars: Make Sterling Serial Number 1 Anchor Length 16' perf. w/ 59' drill collar Size 4 1/2-FH in.
Did Well Flow? No Reversed Out No Surface Choke Size 1 in. Bottom Choke Size 5/8 in.
Main Hole Size 7 7/8 in. Tool Joint Size 4-FH in.

Blow: 1st Open: Good, surface blow increasing to 7 ins. No blow back during shut-in.
2nd Open: Weak, surface blow increasing to 10 1/2 ins. No blow back during shut-in.

Recovered 20 ft. of gas in pipe
Recovered 72 ft. of gassy oil = .588240 bbls. (Grind out: 1%-gas; 99%-green oil) Gravity: 35.7 @ 60°
Recovered 212 ft. of gassy, heavy oil cut watery mud = 1.345290 bbls. (Grind out: 7%-gas; 43%-oil; 1%-water; 49%-mud)
Recovered 284 ft. of TOTAL FLUID = 1.933530 bbls.

Recovered ft. of
Recovered ft. of

Remarks Tool Sample Grind Out: 2%-gas; 30%-oil; 68%-mud

Time Set Packer(s) 9:15 A.M. Time Started off Bottom 12:15 P.M. Maximum Temperature 100°
Initial Hydrostatic Pressure.....(A) 1174 P.S.I.
Initial Flow Period.....Minutes 30 (B) 17 P.S.I. to (C) 90 P.S.I.
Initial Closed In Period.....Minutes 45 (D) 591 P.S.I.
Final Flow Period.....Minutes 45 (E) 93 P.S.I. to (F) 143 P.S.I.
Final Closed In Period.....Minutes 60 (G) 592 P.S.I.
Final Hydrostatic Pressure.....(H) 1173 P.S.I.

DIAMOND TESTING

Pressure Survey Report

General Information

Company Name	VESS OIL CORP	Job Number	M489
Well Name	WILSON A #447 DST#1	Representative	MIKE COCHRAN
Unique Well ID	DST#1 2425-2500 VIOLA	Well Operator	VESS OIL CORP
Surface Location	SEC.9-25S-5E BUTLER CO.KS.	Report Date	2013/04/12
Field	WILDCAT	Prepared By	MIKE COCHRAN
Well Type	Vertical	Qualified By	ROGER MARTIN
	Test Unit		NO. 1

Test Information

Test Type	CONVENTIONAL		
Formation	DST#1 2425-2500 VIOLA		
Test Purpose (AEUB)	Initial Test		
Start Test Date	2013/04/12	Start Test Time	06:25:00
Final Test Date	2013/04/12	Final Test Time	15:30:00
		Well Fluid Type	01 Oil
Gauge Name	0063		
Gauge Serial Number			

Test Results

Remarks RECOVERED:
20' GIP
72' GO 1% GAS, 99% GREEN OIL
212' GHOCWM 7% GAS, 43% OIL, 1% WTR, 49% MUD
284' TOTAL FLUID

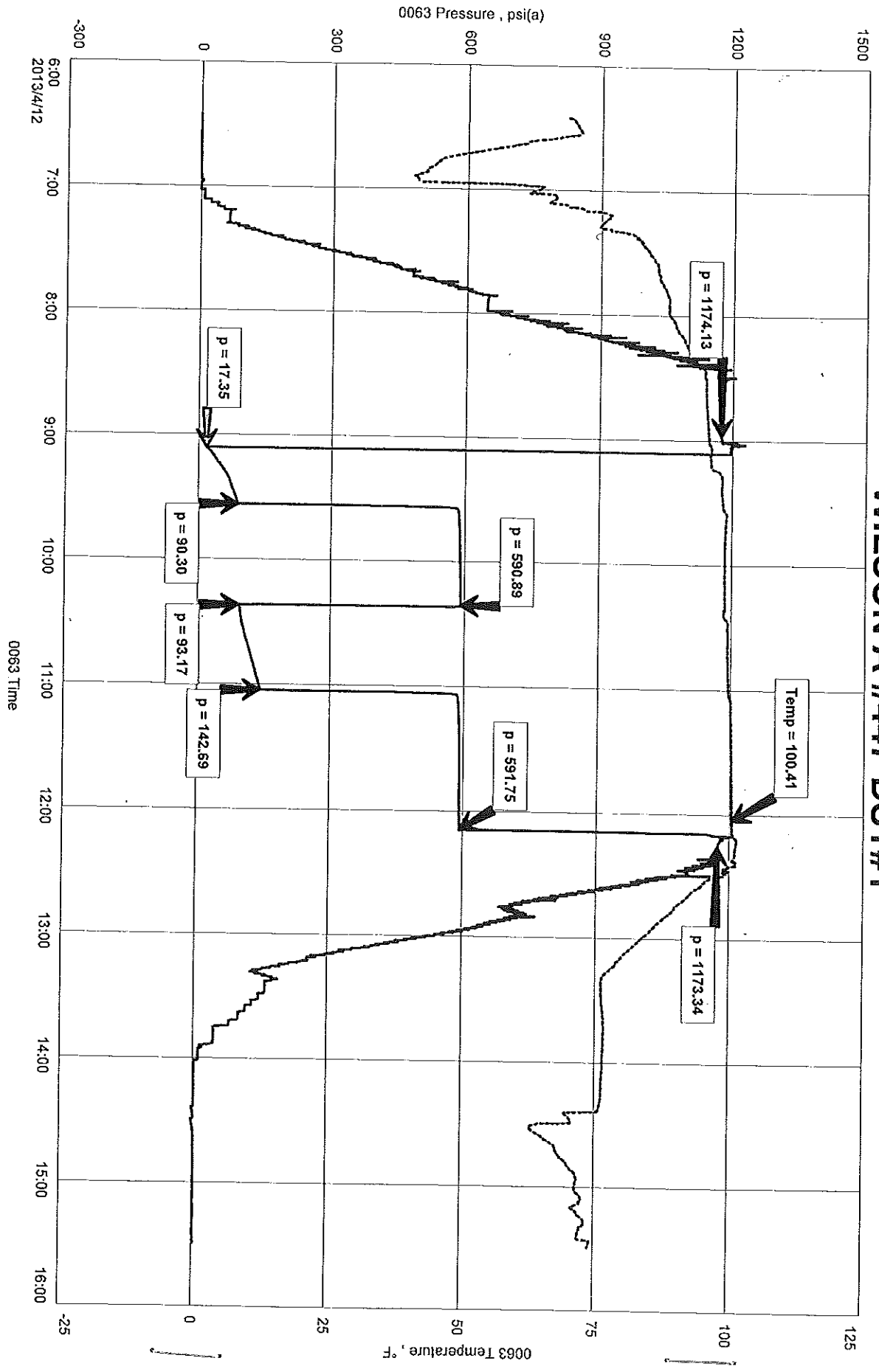
GRAVITY: 35.7 @ 60 DEG

TOOL SAMPLE: 2% GAS, 30% OIL, 68% MUD

VESS OIL CORP
DST#1 2425-2500 VIOLA
Start Test Date: 2013/04/12
Final Test Date: 2013/04/12

WILSON A #447 DST#1

WILSON A #447 DST#1
Formation: DST#1 2425-2500 VIOLA
Pool: WILDCAT
Job Number: M489



0063 Pressure, psi(a)

0063 Temperature, °F

0063 Time

2013/4/12