

**KEVIN L. KESSLER**  
**CONSULTING PETROLEUM GEOLOGIST**  
 ( 316 ) 522-7338

**OPERATOR : MULL DRILLING COMPANY, INC.**  
**LEASE : FRANKLIN WELL # : 1 - 11**  
**LOCATION : 2285' FNL & 1770' FEL**  
**SEC: 11 TWP : 20 S RGE : 23 W**  
**COUNTY : NESS STATE : KANSAS**

**ELEVATION**  
**KB : 2229**  
**GL : 2220**  
 MEASUREMENTS FROM  
**KB**

**CONTRACTOR : DUKE DRILLING RIG # 4**  
**COMM : 03 / 01 / 2013 COMP : 03 / 10 / 2013**  
**RTD : 4450 LOG TD : 4452**  
**SAMPLES SAVED FROM : 3600 TO : RTD**  
**GEOLOGICAL SUPERVISION FROM : 3600 TO : RTD**  
**MUD UP : 3500 TYPE MUD : CHEMICAL**

**CASING RECORD**  
**SURFACE :**  
**8 5/8" @ 226'**  
**PRODUCTION :**  
**NONE**

**ELECTRICAL SURVEYS :**

FORMATION	TOP	LOG	DATUM	TOP	SAMPLE	DATUM	STRUCT. COMP.
HEEBNER	3667		- 1438	3667		- 1438	+ 04
LANSING	3718		- 1489	3718		- 1489	+ 03
STARK	4010		- 1781	4010		- 1781	+ 03
FORT SCOTT	4234		- 2005	4234		- 2005	+ 05
CHEROKEE	4257		- 2028	4257		- 2028	+ 04
MISSISSIPPI	4324		- 2095	4324		- 2095	+ 05

REFERENCE WELL FOR STRUCTURAL COMPARISON :

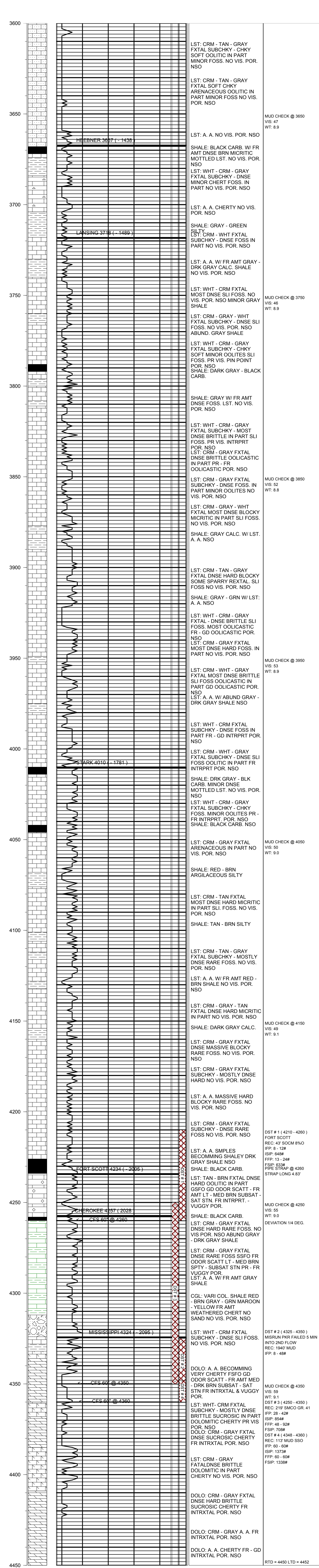
**MURFIN DRILLING # 1 FOOS SEC 11 - T 20 S - R 23 W NESS COUNTY KANSAS**

**CDL/CNL**

**DIL**

**MICRO**

**SONIC**



MUD CHECK @ 3650  
 VIS: 47  
 WT: 8.9

MUD CHECK @ 3750  
 VIS: 46  
 WT: 8.9

MUD CHECK @ 3850  
 VIS: 52  
 WT: 8.8

MUD CHECK @ 3950  
 VIS: 53  
 WT: 8.9

MUD CHECK @ 4050  
 VIS: 50  
 WT: 9.0

MUD CHECK @ 4150  
 VIS: 49  
 WT: 9.1

DST # 1 ( 4210 - 4260 )  
 FORT SCOTT  
 REC: 43' SOCM 8%O  
 IFF: 8 - 12#  
 ISIP: 648#  
 FFP: 13 - 24#  
 FSP: 633#  
 PIPE STRAP @ 4260  
 STRAP LONG 4.83'

MUD CHECK @ 4250  
 VIS: 55  
 WT: 9.0  
 DEVIATION 1/4 DEG.

DST # 2 ( 4325 - 4350 )  
 MISRUN PKR FAILED 5 MIN  
 INTO 2ND FLOW  
 REC: 1940' MUD  
 IFF: 8 - 48#

MUD CHECK @ 4350  
 VIS: 59  
 WT: 9.1

DST # 3 ( 4250 - 4350 )  
 REC: 219' SMO GR. 41  
 IFF: 28 - 42#  
 ISIP: 854#  
 FFP: 48 - 92#  
 FSP: 708#

DST # 4 ( 4348 - 4360 )  
 REC: 113' MUD SSO  
 IFF: 60 - 60#  
 ISIP: 1373#  
 FFP: 60 - 60#  
 FSP: 1338#

MUD CHECK @ 4350  
 VIS: 59  
 WT: 9.1

DST # 3 ( 4250 - 4350 )  
 REC: 219' SMO GR. 41  
 IFF: 28 - 42#  
 ISIP: 854#  
 FFP: 48 - 92#  
 FSP: 708#

DST # 4 ( 4348 - 4360 )  
 REC: 113' MUD SSO  
 IFF: 60 - 60#  
 ISIP: 1373#  
 FFP: 60 - 60#  
 FSP: 1338#

MUD CHECK @ 4350  
 VIS: 59  
 WT: 9.1

DST # 3 ( 4250 - 4350 )  
 REC: 219' SMO GR. 41  
 IFF: 28 - 42#  
 ISIP: 854#  
 FFP: 48 - 92#  
 FSP: 708#

DST # 4 ( 4348 - 4360 )  
 REC: 113' MUD SSO  
 IFF: 60 - 60#  
 ISIP: 1373#  
 FFP: 60 - 60#  
 FSP: 1338#

MUD CHECK @ 4350  
 VIS: 59  
 WT: 9.1

DST # 3 ( 4250 - 4350 )  
 REC: 219' SMO GR. 41  
 IFF: 28 - 42#  
 ISIP: 854#  
 FFP: 48 - 92#  
 FSP: 708#

DST # 4 ( 4348 - 4360 )  
 REC: 113' MUD SSO  
 IFF: 60 - 60#  
 ISIP: 1373#  
 FFP: 60 - 60#  
 FSP: 1338#

MUD CHECK @ 4350  
 VIS: 59  
 WT: 9.1

**COMMENTS:**

**DUE TO NEGATIVE DST RESULTS THIS WELL  
 WAS PLUGGED AS DRY & ABANDONDED**

**KEVIN L. KESSLER**