

GEOLOGIST'S REPORT

DRILLING TIME AND SAMPLE LOG

BACH OIL PRODUCTION

WELL: LJ RANCH #2

**LOC.: 2100' FNL & 1350' FEL
SEC. 3-4-20W**

**PHILLIPS COUNTY, KANSAS
API: 15-147-20707-00-00**

**DRILLING CONTR.: MURFIN RIG #8
SPUD: 02-27-13 COMP:03-05-13
MUD UP: 2850' TYPE MUD: CHEM.
DRILL TIME: 2950-RTD
RTD: 3565' LTD: 3563'
SAMPLES SAVED: 3000'-RTD
GEOLOGIST: ROBERT J. PETERSEN**

ELEVATION

KB: 2111'
GL: 2106'

LOG MEASURED FROM: KB

SURFACE CASING

8 5/8" surface csg.
Set @208' KB.
Cem. w/175 sx Common,
3% CC, 2% Gel.

PRODUCTION CASING

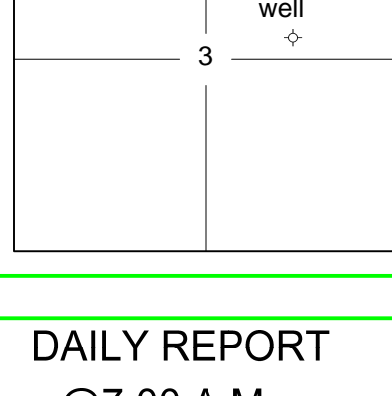
D&A

WELL LOG SURVEYS

RAG

ELECTRIC LOG TOPS

FORMATION	DEPTH	DATUM	POSITION
SC	1730	+381	-5
BSC	1756	+355	-3
TOPEKA	3104	-993	-5
HEEBNER	3295	-1184	-6
TORONTO	3321	-1210	-4
LKC	3340	-1229	-6
Muncie	3448	-1337	-6
Stark	3508	-1397	-2
BKC	3539	-1428	-6



REFERENCE WELL:

Bach Production
LJ Ranch #1
1600' FNL & 380' FEL
3-4-20W
2121KB

REMARKS AND RECOMMENDATIONS

This test was plugged and abandoned by the operator

Respectfully submitted,

Robert J. Petersen

Robert J. Petersen

DAILY REPORT

@7:00 A.M.

2-27-13 MIRU, SPUD
02-28-13 208' Drilling cement
03-01-13 2080' Drilling
03-02-13 3025' Drilling
03-03-13 3243' DST #1
03-04-13 3510 DST #3
03-05-13 3565' RTD P&A

