



DRILL STEM TEST REPORT

Prepared For: **TDI Inc**

1310 Bison Rd
Hays KS 67601-9696

ATTN: Tom Denning

Hertel #1

6-15s-19w Ellis,KS

Start Date: 2013.04.02 @ 13:20:30

End Date: 2013.04.02 @ 19:41:09

Job Ticket #: 52554 DST #: 1

Trilobite Testing, Inc
PO Box 362 Hays, KS 67601
ph: 785-625-4778 fax: 785-625-5620

Printed: 2013.04.10 @ 10:31:21

TDI Inc
6-15s-19w Ellis,KS
Hertel #1
DST # 1
LKC "C"
2013.04.02



TRILOBITE TESTING, INC.

DRILL STEM TEST REPORT

TDI Inc
 1310 Bison Rd
 Hays KS 67601-9696
 ATTN: Tom Denning

6-15s-19w Ellis, KS
Hertel #1
 Job Ticket: 52554 **DST#: 1**
 Test Start: 2013.04.02 @ 13:20:30

GENERAL INFORMATION:

Formation: **LKC "C"**
 Deviated: No Whipstock: ft (KB)
 Time Tool Opened: 15:15:40
 Time Test Ended: 19:41:09
 Interval: **3368.00 ft (KB) To 3390.00 ft (KB) (TVD)**
 Total Depth: 3390.00 ft (KB) (TVD)
 Hole Diameter: 7.88 inches Hole Condition: Fair
 Test Type: Conventional Bottom Hole (Initial)
 Tester: Ray Schwager
 Unit No: 42
 Reference Elevations: 2050.00 ft (KB)
 2040.00 ft (CF)
 KB to GR/CF: 10.00 ft

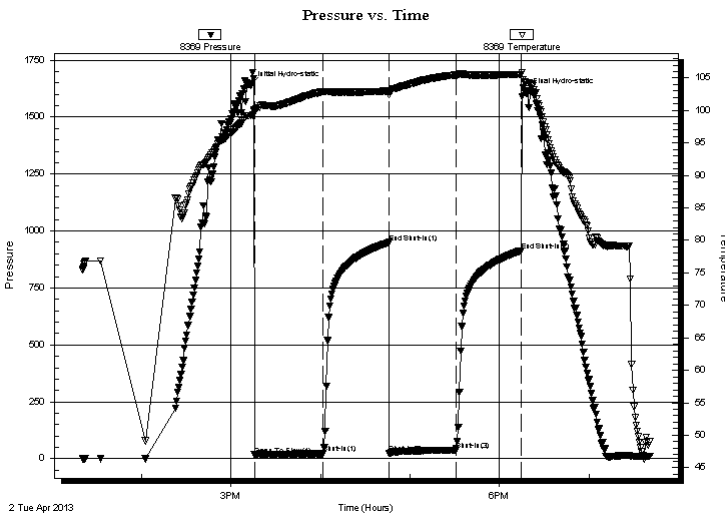
Serial #: 8369

Inside

Press @ Run Depth: 22.63 psig @ 3369.00 ft (KB) Capacity: 8000.00 psig
 Start Date: 2013.04.02 End Date: 2013.04.02 Last Calib.: 2013.04.02
 Start Time: 13:20:30 End Time: 19:41:09 Time On Btm: 2013.04.02 @ 15:13:25
 Time Off Btm: 2013.04.02 @ 18:17:54

TEST COMMENT: 45-IFP-w k bl thru-out 1/4" to 1 1/4" bl
 45-ISIP-no bl
 45-FFP-w k bl thru-out 1/4" bl
 45-FSIP-no bl

PRESSURE SUMMARY



Time (Min.)	Pressure (psig)	Temp (deg F)	Annotation
0	1639.98	99.26	Initial Hydro-static
3	17.10	99.77	Open To Flow (1)
48	22.63	102.90	Shut-In(1)
93	949.32	103.00	End Shut-In(1)
93	23.94	102.46	Shut-In(2)
138	37.53	105.46	Shut-In(3)
182	913.62	105.50	End Shut-In(2)
185	1605.59	104.33	Final Hydro-static

Recovery

Length (ft)	Description	Volume (bbl)
0.00	35'GIP	0.00
25.00	SOCMW 3%O20%M77%W	0.35

Gas Rates

Choke (inches)	Pressure (psig)	Gas Rate (Mcf/d)



**TRILOBITE
TESTING, INC.**

DRILL STEM TEST REPORT

TOOL DIAGRAM

TDI Inc
1310 Bison Rd
Hays KS 67601-9696
ATTN: Tom Denning

6-15s-19w Ellis, KS
Hertel #1
Job Ticket: 52554 **DST#: 1**
Test Start: 2013.04.02 @ 13:20:30

Tool Information

Drill Pipe:	Length: 3362.00 ft	Diameter: 3.80 inches	Volume: 47.16 bbl	Tool Weight: 2200.00 lb
Heavy Wt. Pipe:	Length: 0.00 ft	Diameter: 0.00 inches	Volume: 0.00 bbl	Weight set on Packer: 25000.00 lb
Drill Collar:	Length: 0.00 ft	Diameter: 0.00 inches	Volume: 0.00 bbl	Weight to Pull Loose: 60000.00 lb
			<u>Total Volume: 47.16 bbl</u>	Tool Chased 0.00 ft
Drill Pipe Above KB:	15.00 ft			String Weight: Initial 38000.00 lb
Depth to Top Packer:	3368.00 ft			Final 38000.00 lb
Depth to Bottom Packer:	ft			
Interval between Packers:	22.00 ft			
Tool Length:	43.00 ft			
Number of Packers:	2	Diameter: 6.75 inches		

Tool Comments:

Tool Description	Length (ft)	Serial No.	Position	Depth (ft)	Accum. Lengths
Change Over Sub	1.00			3348.00	
Shut In Tool	5.00			3353.00	
Hydraulic tool	5.00			3358.00	
Packer	5.00			3363.00	21.00 Bottom Of Top Packer
Packer	5.00			3368.00	
Stubb	1.00			3369.00	
Recorder	0.00	8369	Inside	3369.00	
Recorder	0.00	8700	Outside	3369.00	
Perforations	18.00			3387.00	
Bullnose	3.00			3390.00	22.00 Bottom Packers & Anchor
Total Tool Length:	43.00				



**TRILOBITE
TESTING, INC.**

DRILL STEM TEST REPORT

FLUID SUMMARY

TDI Inc
1310 Bison Rd
Hays KS 67601-9696
ATTN: Tom Denning

6-15s-19w Ellis,KS
Hertel #1
Job Ticket: 52554 **DST#: 1**
Test Start: 2013.04.02 @ 13:20:30

Mud and Cushion Information

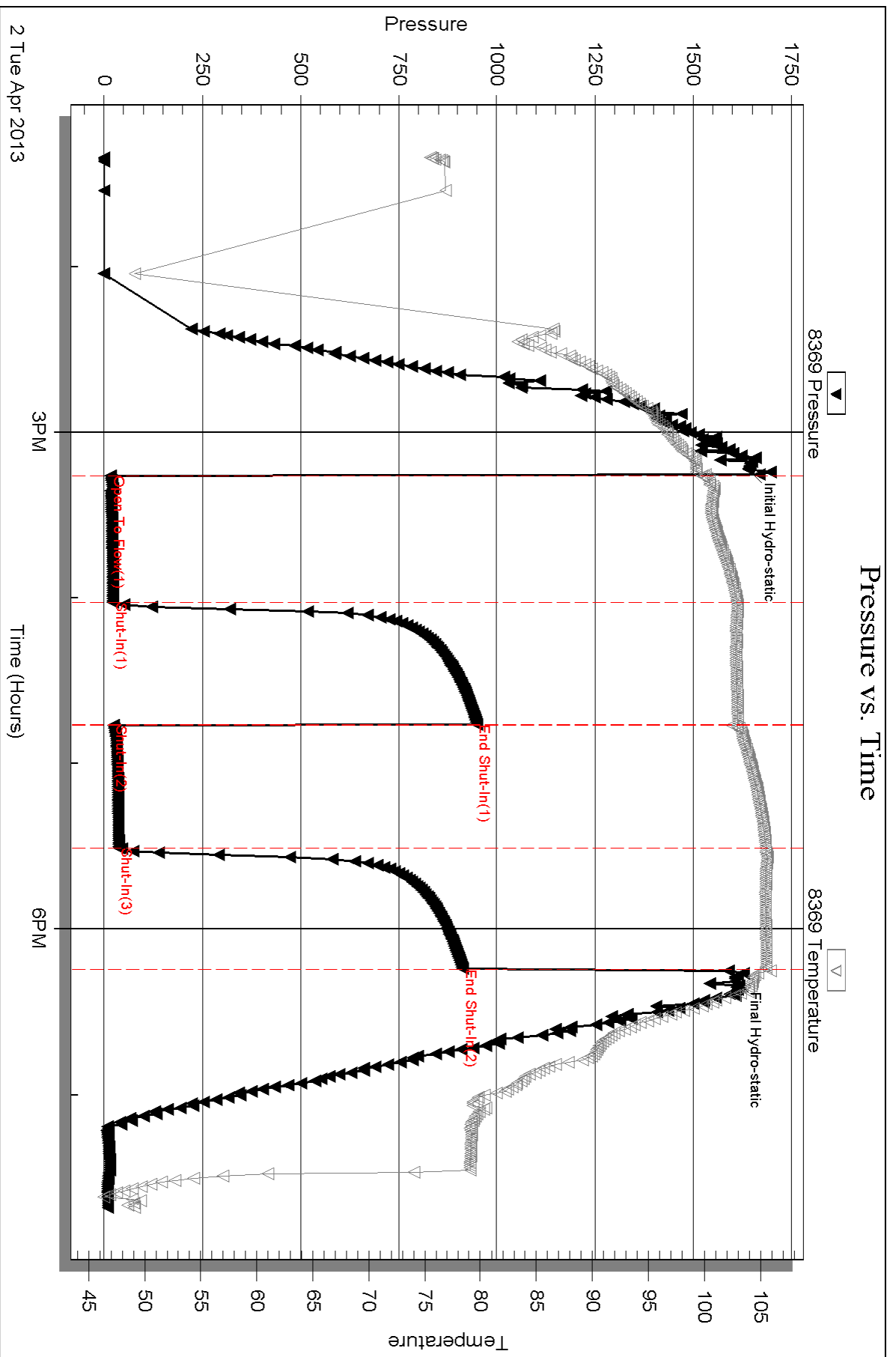
Mud Type: Gel Chem	Cushion Type:	Oil API:	deg API
Mud Weight: 9.00 lb/gal	Cushion Length: ft	Water Salinity: 74000 ppm	
Viscosity: 48.00 sec/qt	Cushion Volume: bbl		
Water Loss: 6.75 in ³	Gas Cushion Type:		
Resistivity: ohm.m	Gas Cushion Pressure: psig		
Salinity: 3800.00 ppm			
Filter Cake: 1.00 inches			

Recovery Information

Recovery Table

Length ft	Description	Volume bbl
0.00	35'GIP	0.000
25.00	SOCMW 3%O20%M77%W	0.351

Total Length: 25.00 ft Total Volume: 0.351 bbl
 Num Fluid Samples: 0 Num Gas Bombs: 0 Serial #:
 Laboratory Name: Laboratory Location:
 Recovery Comments: RW .16@45F

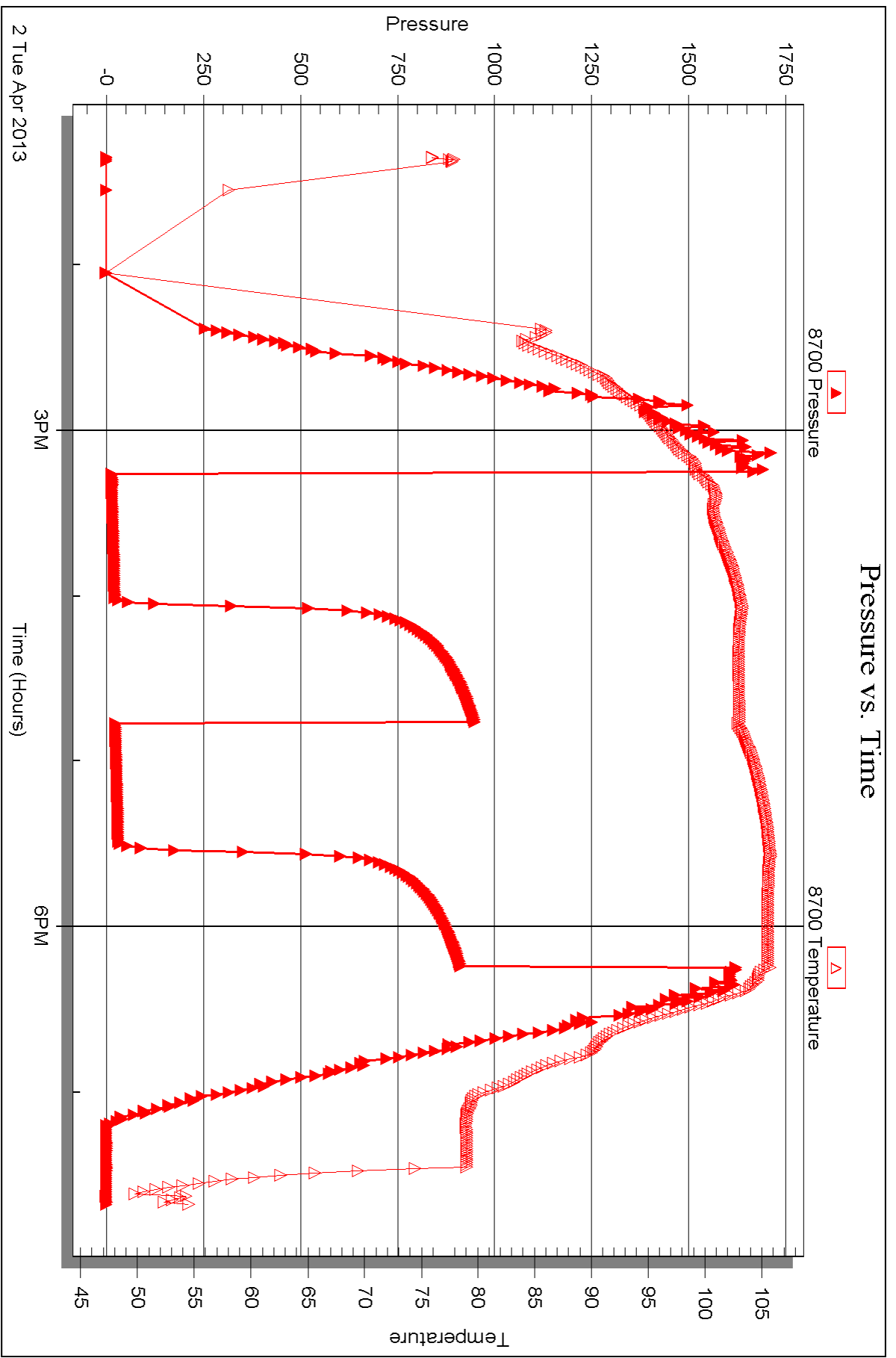


Serial #: 8700

Outside TDI Inc

Header #1

DST Test Number: 1



Triobite Testing, Inc

Ref. No: 52554

Printed: 2013.04.10 @ 10:31:24



DRILL STEM TEST REPORT

Prepared For: **TDI Inc**

1310 Bison Rd
Hays KS 67601-9696

ATTN: Tom Denning

Hertel #1

6-15s-19w Ellis,KS

Start Date: 2013.04.03 @ 02:05:35

End Date: 2013.04.03 @ 08:33:29

Job Ticket #: 52555 DST #: 2

Trilobite Testing, Inc
PO Box 362 Hays, KS 67601
ph: 785-625-4778 fax: 785-625-5620

Printed: 2013.04.10 @ 10:19:15

TDI Inc
6-15s-19w Ellis,KS
Hertel #1
DST # 2
LKC "D"
2013.04.03



TRILOBITE TESTING, INC.

DRILL STEM TEST REPORT

TDI Inc
 1310 Bison Rd
 Hays KS 67601-9696
 ATTN: Tom Denning

6-15s-19w Ellis, KS
Hertel #1
 Job Ticket: 52555 **DST#: 2**
 Test Start: 2013.04.03 @ 02:05:35

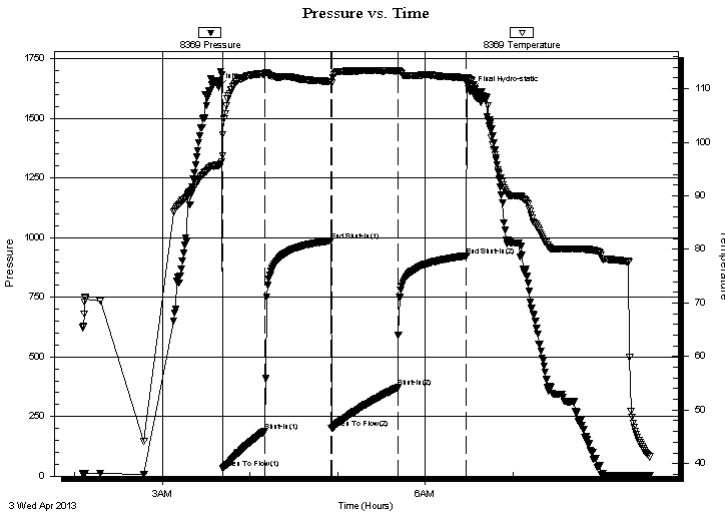
GENERAL INFORMATION:

Formation: **LKC "D"**
 Deviated: No Whipstock: ft (KB)
 Time Tool Opened: 03:41:15
 Time Test Ended: 08:33:29
 Interval: **3394.00 ft (KB) To 3412.00 ft (KB) (TVD)**
 Total Depth: 3412.00 ft (KB) (TVD)
 Hole Diameter: 7.88 inches Hole Condition: Fair
 Test Type: Conventional Bottom Hole (Reset)
 Tester: Ray Schwager
 Unit No: 42
 Reference Elevations: 2050.00 ft (KB)
 2040.00 ft (CF)
 KB to GR/CF: 10.00 ft

Serial #: 8369 Inside
 Press @ Run Depth: 371.30 psig @ 3395.00 ft (KB) Capacity: 8000.00 psig
 Start Date: 2013.04.03 End Date: 2013.04.03 Last Calib.: 2013.04.03
 Start Time: 02:05:35 End Time: 08:33:29 Time On Btm: 2013.04.03 @ 03:38:30
 Time Off Btm: 2013.04.03 @ 06:30:59

TEST COMMENT: 30-IFP-w k to strg in 5 min
 45-ISIP-no bl
 45-FFP-w k to strg in 7 min
 45-FSIP-no bl

PRESSURE SUMMARY



Time (Min.)	Pressure (psig)	Temp (deg F)	Annotation
0	1630.89	95.71	Initial Hydro-static
3	33.43	97.54	Open To Flow (1)
32	189.76	112.89	Shut-In(1)
77	987.69	111.33	End Shut-In(1)
78	199.67	111.08	Open To Flow (2)
123	371.30	113.33	Shut-In(2)
170	924.62	112.09	End Shut-In(2)
173	1618.17	111.62	Final Hydro-static

Recovery

Length (ft)	Description	Volume (bbl)
60.00	MW w/oil spots	0.84
585.00	Water	8.21

* Recovery from multiple tests

Gas Rates

Choke (inches)	Pressure (psig)	Gas Rate (Mcf/d)



**TRILOBITE
TESTING, INC.**

DRILL STEM TEST REPORT

TOOL DIAGRAM

TDI Inc
1310 Bison Rd
Hays KS 67601-9696
ATTN: Tom Denning

6-15s-19w Ellis,KS
Hertel #1
Job Ticket: 52555 **DST#: 2**
Test Start: 2013.04.03 @ 02:05:35

Tool Information

Drill Pipe:	Length: 3403.00 ft	Diameter: 3.80 inches	Volume: 47.74 bbl	Tool Weight:	2200.00 lb
Heavy Wt. Pipe:	Length: 0.00 ft	Diameter: 0.00 inches	Volume: 0.00 bbl	Weight set on Packer:	25000.00 lb
Drill Collar:	Length: 0.00 ft	Diameter: 0.00 inches	Volume: 0.00 bbl	Weight to Pull Loose:	60000.00 lb
			<u>Total Volume: 47.74 bbl</u>	Tool Chased	0.00 ft
Drill Pipe Above KB:	30.00 ft			String Weight: Initial	38000.00 lb
Depth to Top Packer:	3394.00 ft			Final	41000.00 lb
Depth to Bottom Packer:	ft				
Interval between Packers:	18.00 ft				
Tool Length:	39.00 ft				
Number of Packers:	2	Diameter: 6.75 inches			

Tool Comments:

Tool Description	Length (ft)	Serial No.	Position	Depth (ft)	Accum. Lengths
-------------------------	--------------------	-------------------	-----------------	-------------------	-----------------------

Change Over Sub	1.00			3374.00	
Shut In Tool	5.00			3379.00	
Hydraulic tool	5.00			3384.00	
Packer	5.00			3389.00	21.00 Bottom Of Top Packer
Packer	5.00			3394.00	
Stubb	1.00			3395.00	
Recorder	0.00	8369	Inside	3395.00	
Recorder	0.00	8700	Outside	3395.00	
Perforations	14.00			3409.00	
Bullnose	3.00			3412.00	18.00 Bottom Packers & Anchor
Total Tool Length:	39.00				



**TRILOBITE
TESTING, INC.**

DRILL STEM TEST REPORT

FLUID SUMMARY

TDI Inc
1310 Bison Rd
Hays KS 67601-9696
ATTN: Tom Denning

6-15s-19w Ellis,KS
Hertel #1
Job Ticket: 52555 **DST#: 2**
Test Start: 2013.04.03 @ 02:05:35

Mud and Cushion Information

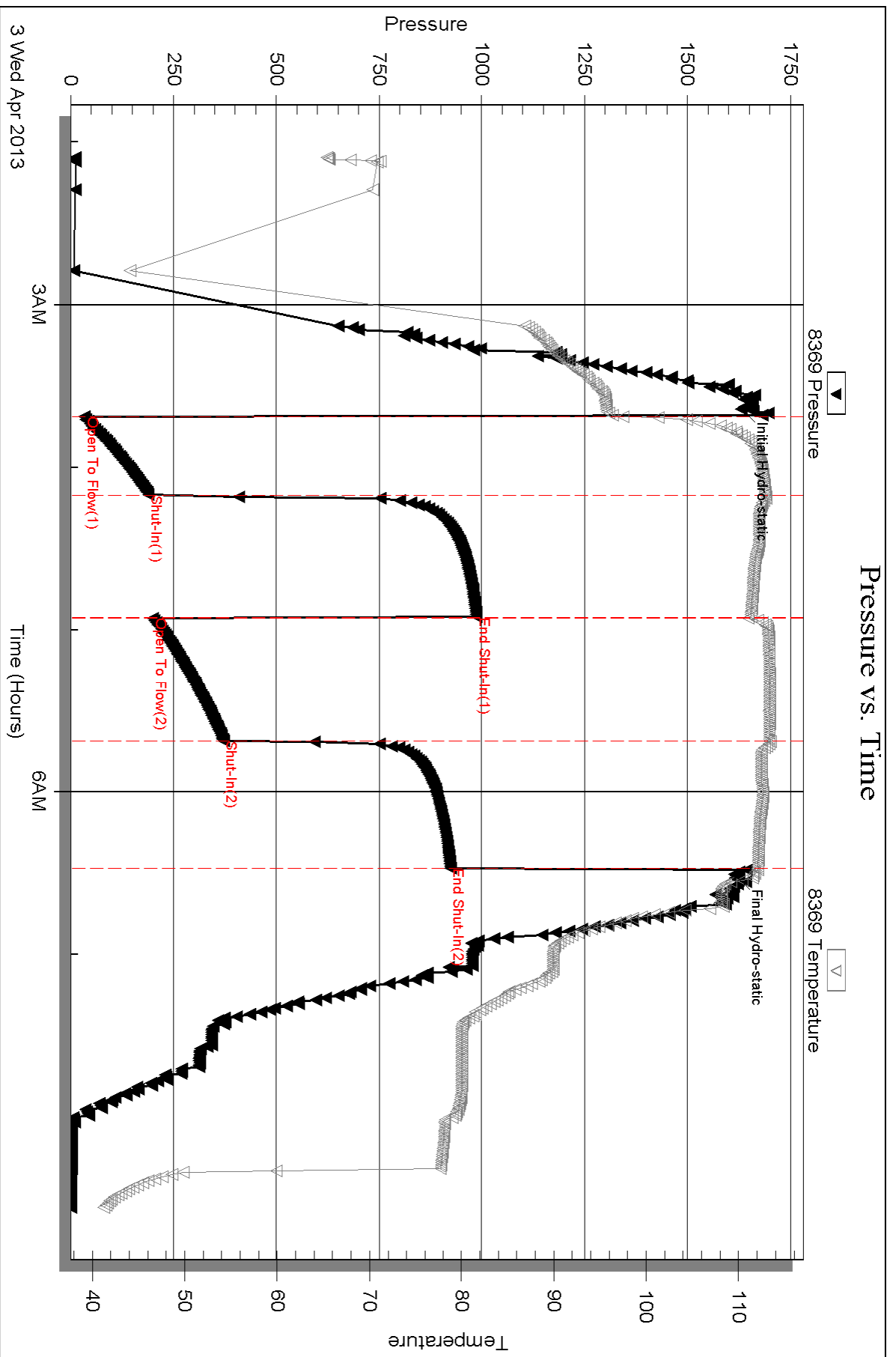
Mud Type: Gel Chem	Cushion Type:	Oil API:	deg API
Mud Weight: 9.00 lb/gal	Cushion Length: ft	Water Salinity:	56000 ppm
Viscosity: 65.00 sec/qt	Cushion Volume: bbl		
Water Loss: 6.76 in ³	Gas Cushion Type:		
Resistivity: ohm.m	Gas Cushion Pressure: psig		
Salinity: 3800.00 ppm			
Filter Cake: 1.00 inches			

Recovery Information

Recovery Table

Length ft	Description	Volume bbl
60.00	MW w/oil spots	0.842
585.00	Water	8.206

Total Length: 645.00 ft Total Volume: 9.048 bbl
 Num Fluid Samples: 0 Num Gas Bombs: 0 Serial #:
 Laboratory Name: Laboratory Location:
 Recovery Comments: RW .16 @ 60F



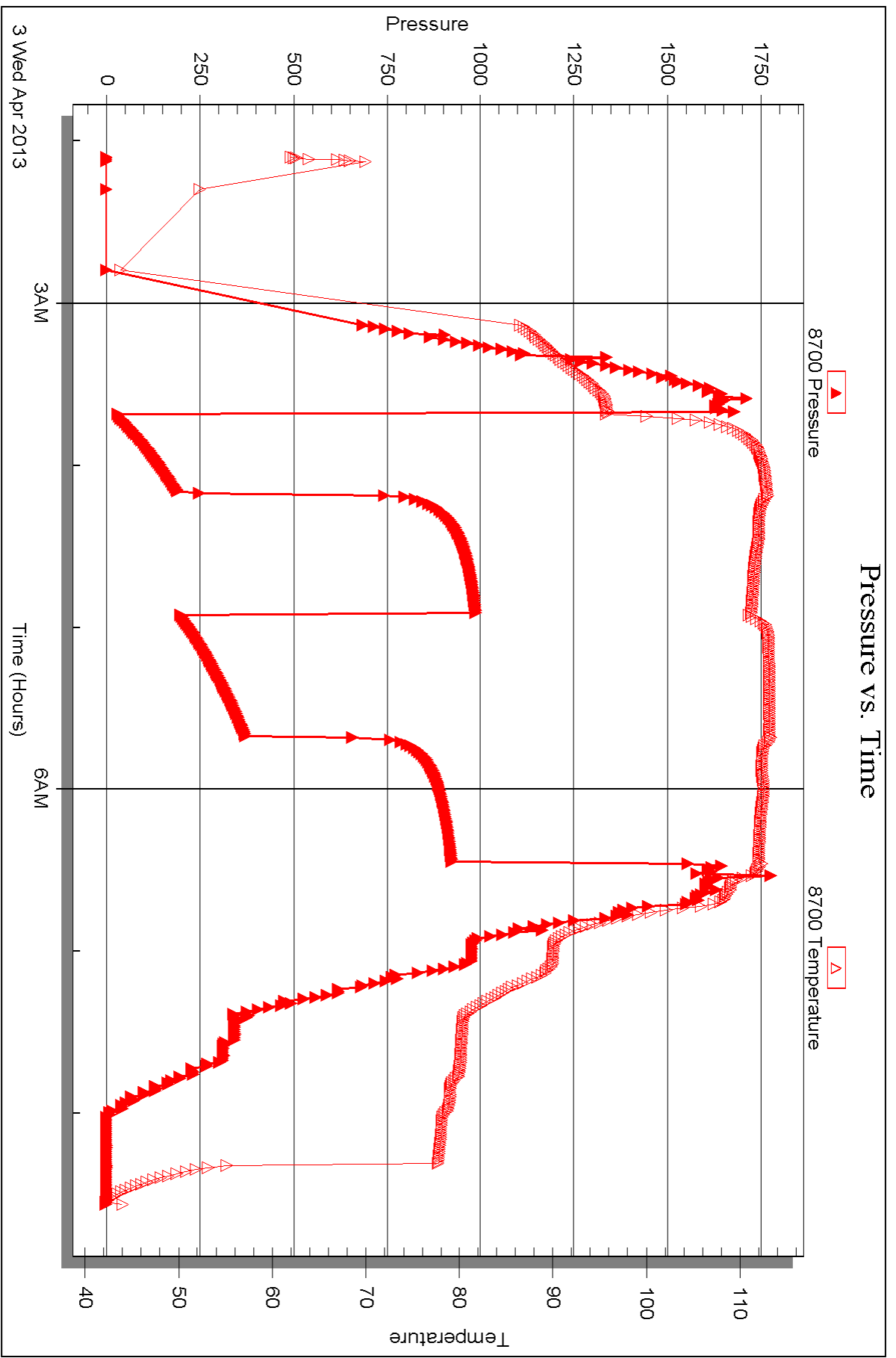
Serial #: 8700

Outside

TDI Inc

Header #1

DST Test Number: 2



3 Wed Apr 2013

3AM

Time (Hours)

6AM



DRILL STEM TEST REPORT

Prepared For: **TDI Inc**

1310 Bison Rd
Hays KS 67601-9696

ATTN: Tom Denning

Hertel #1

6-15s-19w Ellis,KS

Start Date: 2013.04.03 @ 22:06:04

End Date: 2013.04.04 @ 02:24:43

Job Ticket #: 52556 DST #: 3

Trilobite Testing, Inc
PO Box 362 Hays, KS 67601
ph: 785-625-4778 fax: 785-625-5620

Printed: 2013.04.10 @ 10:16:51

TDI Inc
6-15s-19w Ellis,KS
Hertel #1
DST # 3
LKC I-J
2013.04.03



TRILOBITE TESTING, INC.

DRILL STEM TEST REPORT

TDI Inc
 1310 Bison Rd
 Hays KS 67601-9696
 ATTN: Tom Denning

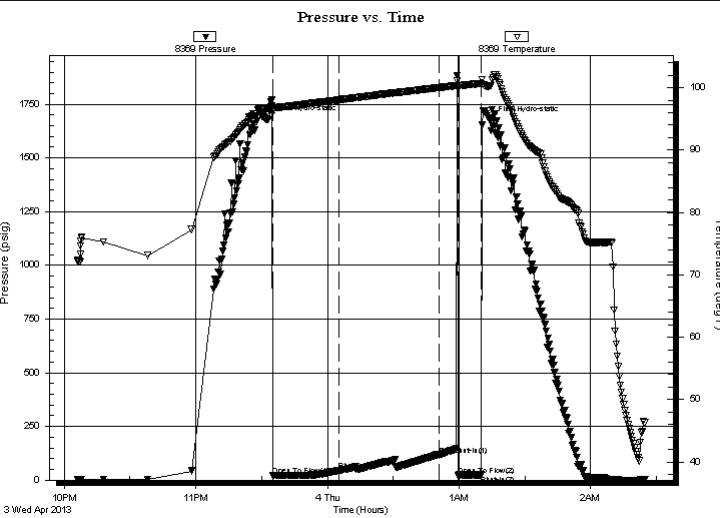
6-15s-19w Ellis, KS
Hertel #1
 Job Ticket: 52556 **DST#: 3**
 Test Start: 2013.04.03 @ 22:06:04

GENERAL INFORMATION:

Formation: **LKC I-J**
 Deviated: No Whipstock: ft (KB)
 Test Type: Conventional Bottom Hole (Reset)
 Time Tool Opened: 23:35:14 Tester: Ray Schwager
 Time Test Ended: 02:24:43 Unit No: 42
 Interval: **3500.00 ft (KB) To 3559.00 ft (KB) (TVD)** Reference Elevations: 2050.00 ft (KB)
 Total Depth: 3550.00 ft (KB) (TVD) 2040.00 ft (CF)
 Hole Diameter: 7.88 inches Hole Condition: Fair KB to GR/CF: 10.00 ft

Serial #: 8369 Inside
 Press @ Run Depth: 45.48 psig @ 3514.00 ft (KB) Capacity: 8000.00 psig
 Start Date: 2013.04.03 End Date: 2013.04.04 Last Calib.: 2013.04.04
 Start Time: 22:06:04 End Time: 02:24:43 Time On Btm: 2013.04.03 @ 23:32:59
 Time Off Btm: 2013.04.04 @ 01:14:29

TEST COMMENT: 30-IFP-w k surface bl thru-out
 45-ISIP-no bl
 20-FFP-no bl , flushed tool no help
 pulled tool



PRESSURE SUMMARY

Time (Min.)	Pressure (psig)	Temp (deg F)	Annotation
0	1678.26	96.75	Initial Hydro-static
3	22.89	96.40	Open To Flow (1)
33	45.48	98.06	Shut-In(1)
78	117.83	100.02	End Shut-In(1)
87	23.41	99.93	Open To Flow (2)
98	24.62	100.70	Shut-In(2)
102	1674.08	100.32	Final Hydro-static

Recovery

Length (ft)	Description	Volume (bbl)
1.00	Mud	0.01

* Recovery from multiple tests

Gas Rates

Choke (inches)	Pressure (psig)	Gas Rate (Mcf/d)



**TRILOBITE
TESTING, INC.**

DRILL STEM TEST REPORT

TOOL DIAGRAM

TDI Inc
1310 Bison Rd
Hays KS 67601-9696
ATTN: Tom Denning

6-15s-19w Ellis, KS
Hertel #1
Job Ticket: 52556 **DST#: 3**
Test Start: 2013.04.03 @ 22:06:04

Tool Information

Drill Pipe:	Length: 3499.00 ft	Diameter: 3.80 inches	Volume: 49.08 bbl	Tool Weight:	2200.00 lb
Heavy Wt. Pipe:	Length: 0.00 ft	Diameter: 0.00 inches	Volume: 0.00 bbl	Weight set on Packer:	25000.00 lb
Drill Collar:	Length: 0.00 ft	Diameter: 0.00 inches	Volume: 0.00 bbl	Weight to Pull Loose:	55000.00 lb
			<u>Total Volume: 49.08 bbl</u>	Tool Chased	0.00 ft
Drill Pipe Above KB:	20.00 ft			String Weight: Initial	40000.00 lb
Depth to Top Packer:	3500.00 ft			Final	40000.00 lb
Depth to Bottom Packer:	ft				
Interval between Packers:	50.00 ft				
Tool Length:	71.00 ft				
Number of Packers:	2	Diameter: 6.75 inches			

Tool Comments:

Tool Description	Length (ft)	Serial No.	Position	Depth (ft)	Accum. Lengths
-------------------------	--------------------	-------------------	-----------------	-------------------	-----------------------

Change Over Sub	1.00			3480.00	
Shut In Tool	5.00			3485.00	
Hydraulic tool	5.00			3490.00	
Packer	5.00			3495.00	21.00 Bottom Of Top Packer
Packer	5.00			3500.00	
Stubb	1.00			3501.00	
Perforations	13.00			3514.00	
Recorder	0.00	8369	Inside	3514.00	
Recorder	0.00	8700	Outside	3514.00	
Blank Spacing	33.00			3547.00	
Bullnose	3.00			3550.00	50.00 Bottom Packers & Anchor

Total Tool Length: 71.00



**TRILOBITE
TESTING, INC.**

DRILL STEM TEST REPORT

FLUID SUMMARY

TDI Inc
1310 Bison Rd
Hays KS 67601-9696
ATTN: Tom Denning

6-15s-19w Ellis,KS
Hertel #1
Job Ticket: 52556 **DST#: 3**
Test Start: 2013.04.03 @ 22:06:04

Mud and Cushion Information

Mud Type: Gel Chem	Cushion Type:	Oil API:	deg API
Mud Weight: 9.00 lb/gal	Cushion Length: ft	Water Salinity:	ppm
Viscosity: 48.00 sec/qt	Cushion Volume: bbl		
Water Loss: 7.39 in ³	Gas Cushion Type:		
Resistivity: ohm.m	Gas Cushion Pressure: psig		
Salinity: 4000.00 ppm			
Filter Cake: 1.00 inches			

Recovery Information

Recovery Table

Length ft	Description	Volume bbl
1.00	Mud	0.014

Total Length: 1.00 ft Total Volume: 0.014 bbl
 Num Fluid Samples: 0 Num Gas Bombs: 0 Serial #:
 Laboratory Name: Laboratory Location:
 Recovery Comments:

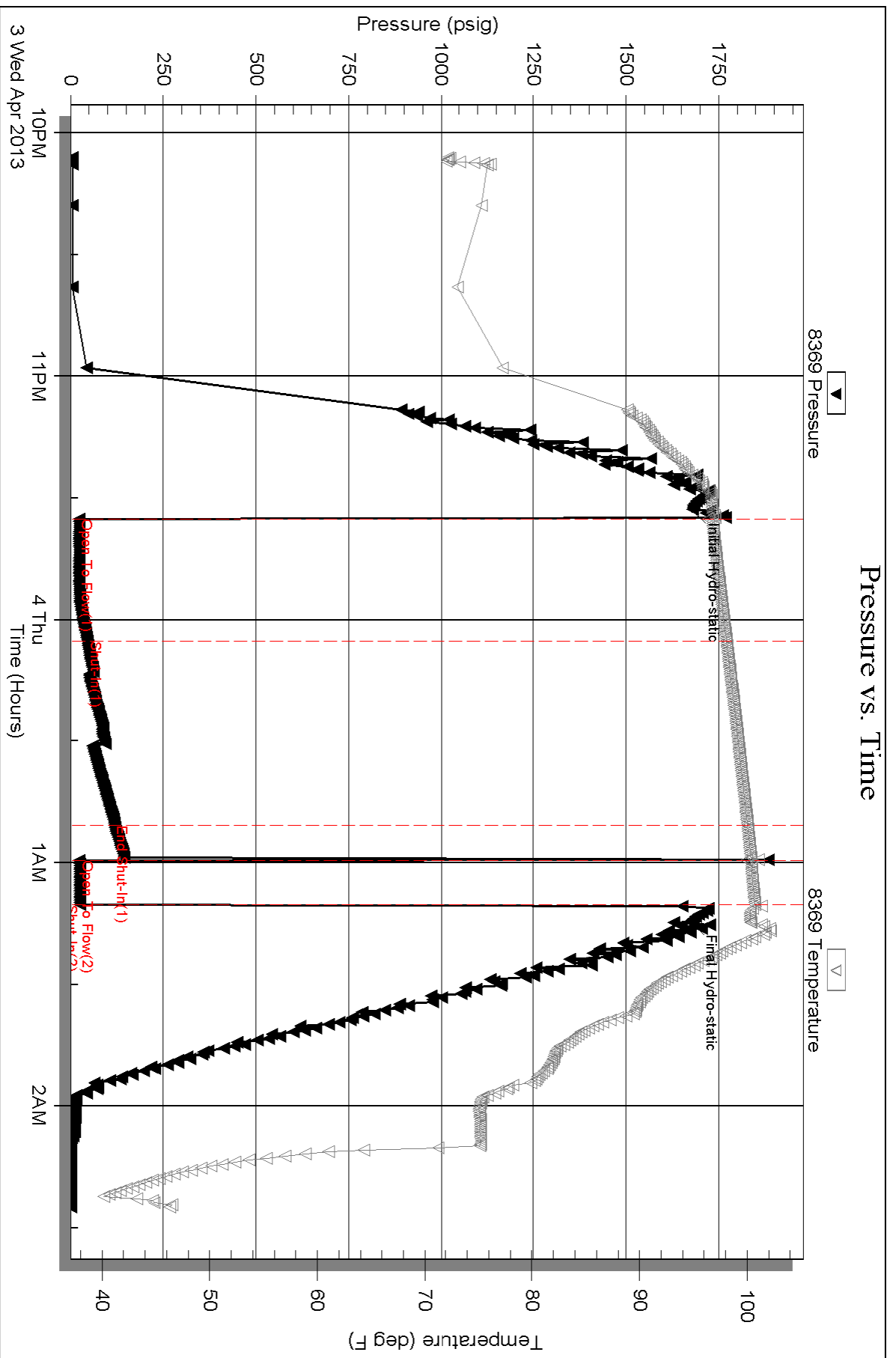
Serial #: 8369

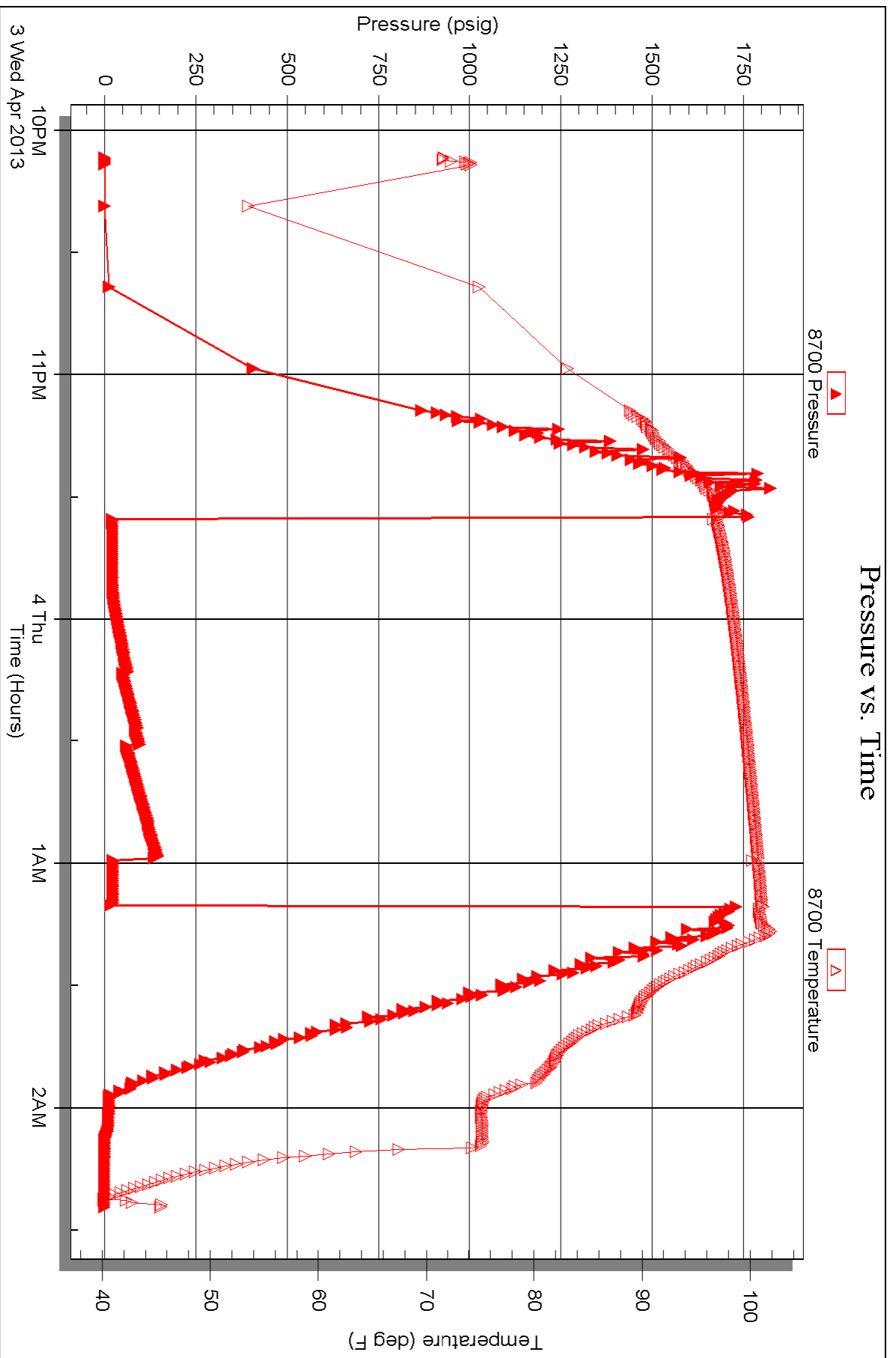
Inside

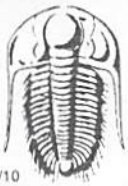
TDI Inc

Header #1

DST Test Number: 3







TRILOBITE TESTING INC.

1515 Commerce Parkway • Hays, Kansas 67601

Test Ticket

NO. 52554

Well Name & No. HERTEL#1 Test No. 1 Date 4-2-13
 Company TDI, Inc Elevation 2050 KB 2040 GL
 Address 1310 Bison Rd Hays, Ks 67601-9696
 Co. Rep / Geo. Herb Dienes Rig Southwind rig 1
 Location: Sec. 6 Twp. 15^s Rge. 19^w Co. ELLIS State Ks

Interval Tested 3368-3390 Zone Tested LKC "C"
 Anchor Length 22 Drill Pipe Run 3362 Mud Wt. 9
 Top Packer Depth 3368 Drill Collars Run - Vis 48
 Bottom Packer Depth 3368 Wt. Pipe Run - WL 6.8
 Total Depth 3390 Chlorides 3800 ppm System LCM 1#
 Blow Description IFP - WEAK Blow thru-out, 1/4" To 1 1/4" Blow
ISTP - NO Blow
FFP - WEAK Blow thru-out, 1/4" Blow
FSTP - NO Blow

Rec	Feet of	%gas	%oil	%water	%mud
<u>25</u>	<u>SOCMW</u>	<u>3</u>	<u>77</u>	<u>20</u>	
<u>35</u>	<u>GIP</u>				

Rec Total 25 BHT 10.5 Gravity - API RW .16 @ 45 ° F Chlorides 74000 ppm
 (A) Initial Hydrostatic 1639 Test 1150 T-On Location 1230
 (B) First Initial Flow 17 Jars - T-Started 1320
 (C) First Final Flow 22 Safety Joint - T-Open 1515
 (D) Initial Shut-In 949 Circ Sub - T-Pulled 1815
 (E) Second Initial Flow 23 Hourly Standby - T-Out 1941
 (F) Second Final Flow 37 Mileage 34RT 52.70 Comments -
 (G) Final Shut-In 913 Sampler -
 (H) Final Hydrostatic 1605 Straddle -
 Ruined Shale Packer
 Ruined Packer
 Extra Copies
 Initial Open 45 Shale Packer -
 Initial Shut-In 45 Extra Packer -
 Final Flow 45 Extra Recorder - Sub Total 0
 Final Shut-In 45 Day Standby - Total 1202.70
 Accessibility - MP/DST Disc't -
 Sub Total 1202.70

Approved By Herb Dienes Our Representative RAY Schwager Thank you

Trilobite Testing Inc. shall not be liable for damaged of any kind of the property or personnel of the one for whom a test is made, or for any loss suffered or sustained, directly or indirectly, through the use of its equipment, or its statements or opinion concerning the results of any test, tools lost or damaged in the hole shall be paid for at cost by the party for whom the test is made.



TRILOBITE TESTING INC.

1515 Commerce Parkway • Hays, Kansas 67601

Test Ticket

NO. 52555

Well Name & No. HERTEL #1 Test No. 2 Date 4-3-13
 Company TOI, Inc Elevation 2050 KB 2040 GL
 Address 1310 Bison Rd Hays Ko 67601-96
 Co. Rep / Geo. Herb Dienes Rig Southwind rig 1
 Location: Sec. 6 Twp. 15^s Rge. 19^w Co. ELLIS State Ks

Interval Tested 3394-3412 Zone Tested LKC "0"
 Anchor Length 18 Drill Pipe Run 3403 Mud Wt. 9.2
 Top Packer Depth 3389 Drill Collars Run - Vis 65
 Bottom Packer Depth 3394 Wt. Pipe Run - WL 6.8
 Total Depth 3412 Chlorides 3800 ppm System LCM 1#

Blow Description IFFP - WEAK TO STRONG IN 5min
ISIP - NO BLOW
FFP - WEAK TO STRONG IN 7min
FSIP -

Rec	Feet of	%gas	%oil	%water	%mud
<u>60</u>	<u>MW w/oil spots</u>				
<u>585</u>	<u>WATER</u>				

Rec Total 745 BHT 112 Gravity - API RW .16 @ 60 °F Chlorides 56000 ppm

(A) Initial Hydrostatic 1630 Test 1150 T-On Location 0145
 (B) First Initial Flow 33 Jars _____ T-Started 0205
 (C) First Final Flow 189 Safety Joint _____ T-Open 0340
 (D) Initial Shut-In 987 Circ Sub _____ T-Pulled 0625
 (E) Second Initial Flow 189 Hourly Standby _____ T-Out 0833
 (F) Second Final Flow 371 Mileage 34RT 52.70 Comments _____
 (G) Final Shut-In 924 Sampler _____
 (H) Final Hydrostatic 1618 Straddle _____ Ruined Shale Packer _____
 Shale Packer _____ Ruined Packer _____
 Extra Packer _____ Extra Copies _____
 Extra Recorder _____

Initial Open 30
 Initial Shut-In 45
 Final Flow 45
 Final Shut-In 45
 Sub Total 1202.70
 Total 1202.70
 MP/DST Disc't _____

Approved By _____ Our Representative RAY SCHWAGER Thank you

Trilobite Testing Inc. shall not be liable for damaged of any kind of the property or personnel of the one for whom a test is made, or for any loss suffered or sustained, directly or indirectly, through the use of its equipment, or its statements or opinion concerning the results of any test, tools lost or damaged in the hole shall be paid for at cost by the party for whom the test is made.



TRILOBITE TESTING INC.

1515 Commerce Parkway • Hays, Kansas 67601

Test Ticket

NO. 52556

4/10

Well Name & No. Hertel #1 Test No. 3 Date 4-3-13
 Company TDI Inc Elevation 2050 KB 2040 GL
 Address 1310 Bison Rd Hays Ks 67601-96
 Co. Rep / Geo. Herb Dienes Rig Southwind rig 1
 Location: Sec. 6 Twp. 15^s Rge. 19^w Co. ELLIS State Ks

Interval Tested 3500-3550 Zone Tested LKC I-J
 Anchor Length 50 Drill Pipe Run 3499 Mud Wt. 9.2
 Top Packer Depth 3495 Drill Collars Run - Vis 48
 Bottom Packer Depth 3500 Wt. Pipe Run - WL 7.4
 Total Depth 3550 Chlorides 4000 ppm System LCM 2#
 Blow Description IFP - Weak surface Blow thru-out
ISIP - NO Blow
FFP - NO Blow, flushed Tool

Rec	Feet of	%gas	%oil	%water	%mud
<u>1</u>	<u>Mud</u>				
Rec	Feet of	%gas	%oil	%water	%mud
Rec	Feet of	%gas	%oil	%water	%mud
Rec	Feet of	%gas	%oil	%water	%mud
Rec	Feet of	%gas	%oil	%water	%mud

Rec Total 1 BHT 101 Gravity - API RW - @ - ° F Chlorides - ppm

(A) Initial Hydrostatic <u>1678</u>	<input checked="" type="checkbox"/> Test <u>1150</u>	T-On Location <u>2055</u>
(B) First Initial Flow <u>22</u>	<input type="checkbox"/> Jars	T-Started <u>2205</u>
(C) First Final Flow <u>45</u>	<input type="checkbox"/> Safety Joint	T-Open <u>2335</u>
(D) Initial Shut-In <u>117</u>	<input type="checkbox"/> Circ Sub	T-Pulled <u>0110</u>
(E) Second Initial Flow <u>23</u>	<input type="checkbox"/> Hourly Standby	T-Out <u>0224</u>
(F) Second Final Flow <u>24</u>	<input checked="" type="checkbox"/> Mileage <u>34RT</u> 105.40	Comments <u>loaded tools @ 16:30 on 4/4</u>
(G) Final Shut-In	<input type="checkbox"/> Sampler	<input type="checkbox"/> Ruined Shale Packer
(H) Final Hydrostatic <u>1674</u>	<input type="checkbox"/> Straddle	<input type="checkbox"/> Ruined Packer
Initial Open <u>30</u>	<input type="checkbox"/> Shale Packer	<input type="checkbox"/> Extra Copies
Initial Shut-In <u>45</u>	<input type="checkbox"/> Extra Packer	Sub Total <u>0</u>
Final Flow <u>20</u>	<input type="checkbox"/> Extra Recorder	Total <u>1255.40</u>
Final Shut-In <u>pulled Tool</u>	<input type="checkbox"/> Day Standby	MP/DST Disc't
	<input type="checkbox"/> Accessibility	
	Sub Total <u>1255.40</u>	

Approved By _____

Our Representative Ray Schwager

Thank you

Trilobite Testing Inc. shall not be liable for damaged of any kind of the property or personnel of the one for whom a test is made, or for any loss suffered or sustained, directly or indirectly, through the use of its equipment, or its statements or opinion concerning the results of any test, tools lost or damaged in the hole shall be paid for at cost by the party for whom the test is made.