

2300

TOP ANHYDRITE 2302

+497

10

20

30

BASE

2335

+464

40

50

60

70

80

3400

10

20

30

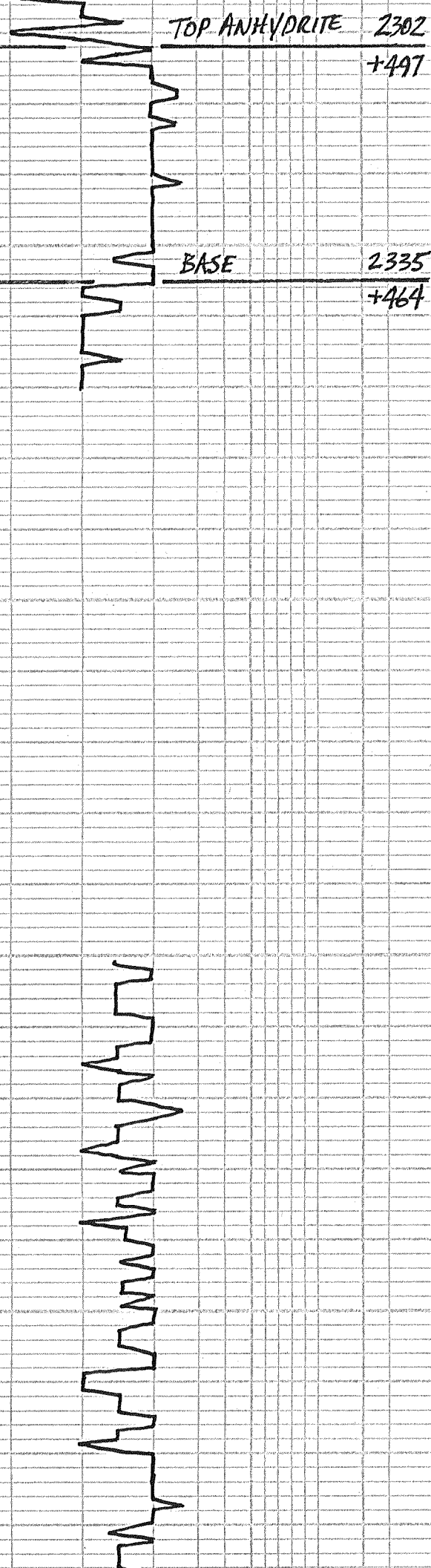
40

50

60

70

80



90
3500
10
20
30
40
50
60
70
80
90
3600
10
20
30
40
50
60
70
80
90
3700

STOTLER 3532
-733

60 CRM-BUFF SEMI-FOSS LS P-F ϕ -NS
NO ODOR

CRM-BUFF SLI-FOSS LS P-F ϕ -NS
INC WH CRK SOFT LS

80 CRM-BUFF-WH SEMI-FOSS LS
PTLY CRK-NS

BUFF-TAN SEMI-FOSS LS W/FAIR
FOSS ϕ -NS, NO ODOR

00 LT GRAY BLKY FN-XLN LS POOR ϕ -NS

LT CRM FOSS LS W/FAIR FOSS ϕ -NS

20 TAN-BUFF LT GRAY SLI-FOSS LS
SALT & PEPPER P-F ϕ -NS

LT CRM-BUFF SLI-FOSS LS-NS

40 LT CRM-WH FN-XLN CRK LS-NS
NO ODOR

CRM-TAN SEMI-FOSS LS P-F ϕ -NS
LT GRAY SHS

60 FLOOD MD GRAY SLI-FOSS LS &
MD GRAY SHS-NS

LOTS LT-MD GRAY SILTSTONE
POOR ϕ -NS NO ODOR

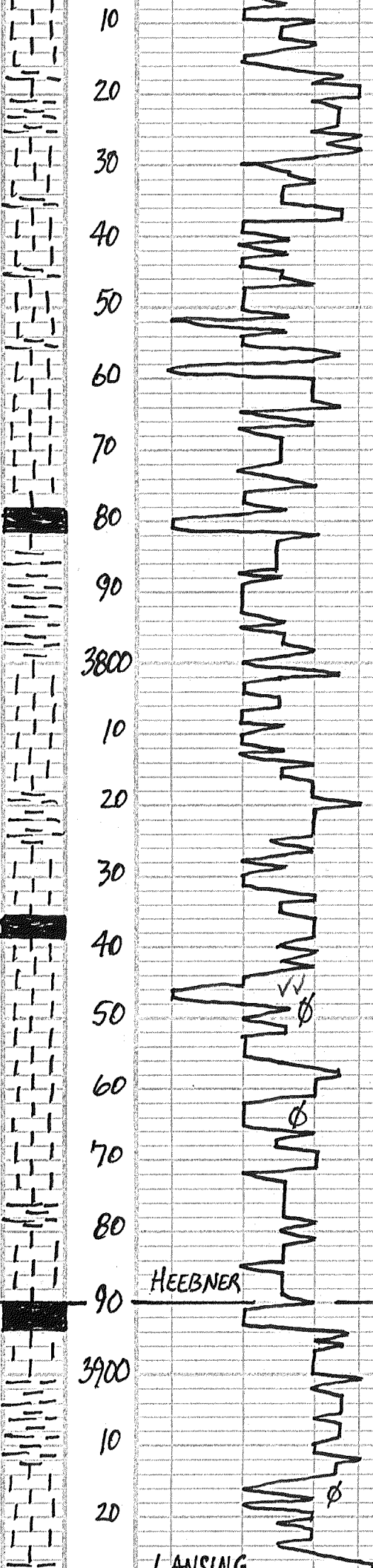
80 SPL-TRASH MOSTLY HULLS & GRAY
GUMBO SHS NO ODOR

LOTS LT CRM-WH FN-XLN LS
PTLY CRK POOR ϕ -NS

00 FLOOD BUFF-LT GRAY SLI-FOSS
SMOOTH-SILTY LS POOR ϕ -NS

BUFF-LT GRAY SLI-FOSS LS
P-F ϕ -NS NO ODOR

20 LOTS WH-LT GRAY SLI-FOSS LS
P-F ϕ -NS



FLOOD LT BUFF V. FOSS LS P-F ϕ
NS NO ODOR

40 LT BUFF LS SEMI-FOSS ϕ FAIR ϕ
NS NO ODOR

LS AA-NS

60 CRM-BUFF SEMI-FOSS LS
P-F FOSS ϕ -NS NO ODOR

WH-CRM-BUFF SEMI-FOSS LS
PTLY CLY -NS

80 LTCRM-V. LT TAN SEMI-FOSS LS
P-F ϕ -NS

LT CRM-BUFF SEMI-FOSS LS P-F ϕ
NS NO ODOR

100 LS AA-NS ϕ FEW BLK SHS

FEW BLK SHS PRED. LTCRM-BUFF
SEMI-FOSS LS P-F ϕ -NS

20 CRM-BUFF LS FOSS ϕ -FAIR-NS
 ϕ LT GRN SILT-SDY SHS NO ODOR

LT CRM-BUFF FOSS LS W/FAIR ϕ
NS NO ODOR

40 CRM-BUFF SLI-FOSS LS POOR ϕ
NS NO ODOR

FLOOD LT CRM SEMI-FOSS LS
P-F FOSS ϕ -NS NO ODOR

60 LTCRM-LT TAN SEMI-FOSS LS
FAIR ϕ NS

LT CRM SEMI-COL LS FAIR COL ϕ
NS NO ODOR

80 LTCRM-LT TAN FN-XLN DNSE
LS POOR ϕ -NS

WH-LTCRM-V. LT TAN V. FOSS
LS P-F FOSS ϕ NS NO ODOR

100 FLOOD BLK CARB SHS!

HEEBNER

3890

-1091

10 LOTS BLK SHS ϕ LT CRM
SEMI-FOSS LS P-F ϕ -NS

20 LT GRN FN-XLN SLI-FOSS LS
DNSE POOR ϕ -NS

30 BRN-RUST-GRY-GRN SHS

40 FLOOD WH-LTCRM SLI-FOSS
LS PTLY DTY P-F ϕ -NS
NO ODOR

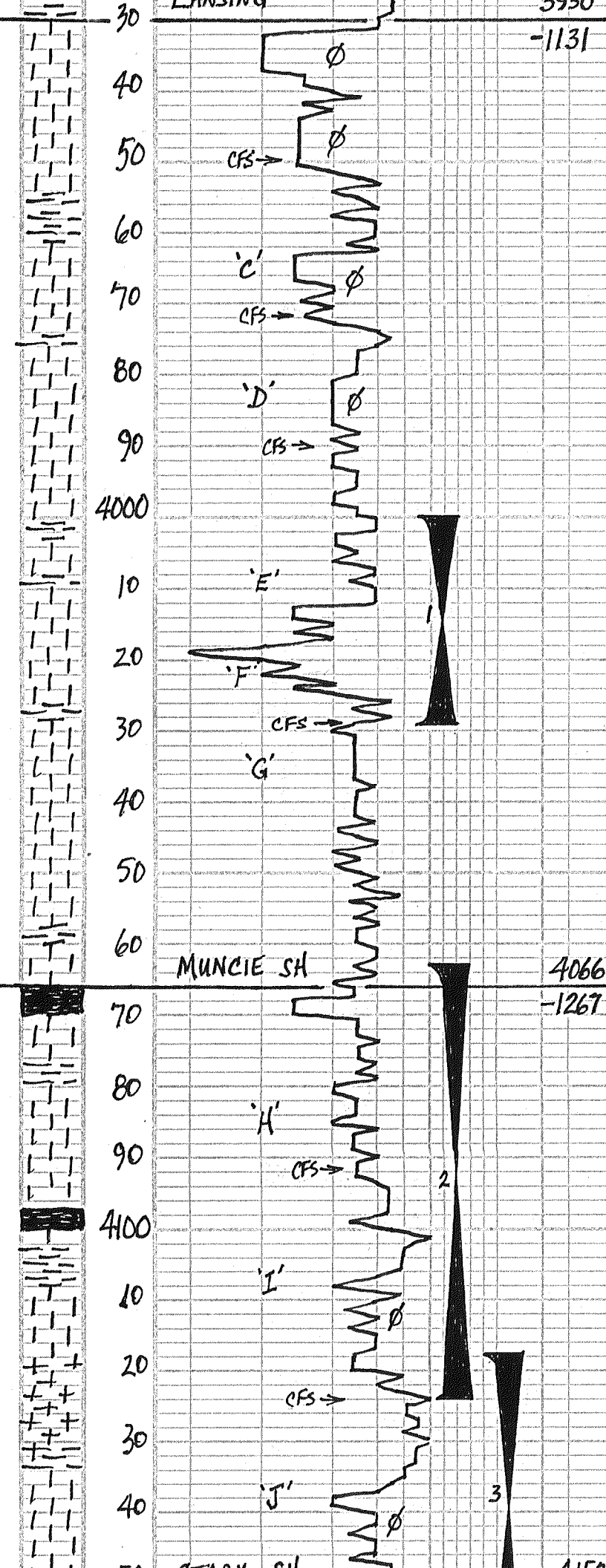
VISC: 63
WT: 8.9
LCN: 2#

← GEOL. ON LOCATION
11:45 AM Mon. 2-4-13

850*PP

LANCING

203A



50) FLOOD WH - LT CRM SEMI - OOL LS
P-F ϕ PTLY CLK NS NO ODOR

30 MIN: WH - LT CRM SEMI - OOL LS
P-F ϕ - NS NO ODOR PTLY CLK

60 MIN: LS AA P-F FOSS OOL ϕ
NS NO ODOR

LT CRM - LT TAN SLI - FOSS LS P-F ϕ
NS NO ODOR

70) LT CRM - LT TAN SLI - FOSS LS
POOR ϕ - NS NO ODOR

30 MIN: FLOOD LT CRM - LT TAN
SEMI - FOSS - OOL LS P-F FOSS ϕ
NS NO ODOR PTLY CLK

60 MIN: LT CRM SLI - SEMI - FOSS
LS P-F FOSS ϕ - NS NO ODOR

80 WH - LT CRM SEMI - OOL LS
P-F ϕ - NS NO ODOR PTLY CLK

90) WH - LT CRM SLI - FOSS LS POOR ϕ
INC CLK NS NO ODOR

30 MIN: FLOOD WH - LT CRM SEMI -
OOL LS P-F ϕ - NS NO ODOR

WH - CRM SEMI - FOSS LS P-F ϕ
NS NO ODOR

10 WH - LT CRM - LT TAN SLI - SEMI -
FOSS LS P-F ϕ - NS NO ODOR

20 LT CRM - LT TAN SLI - FOSS LS
DNSE - CLK POOR ϕ - NS

29) LT CRM - LT TAN FN - XLN DNSE
LS POOR ϕ - NS NO ODOR

30 MIN: FAIR AMT WH - LT CRM
V. FOSS LS W/F - GD FOSS ϕ
W/SS LT & DKFO FEW GAS, BAD
NO ODOR ROCKS HARD & CLEAN

60 MIN:

40 JUNK PRED GRAY - RUST - BLK SHS

50 WH - CRM - LT TAN SLI - FOSS LS
POOR ϕ - NS NO ODOR

60 FLOOD WH - V. LT GRAY SLI - FOSS LS
LOTS CLK FEW DNSE - NS

70 PRED WH - V. LT GRAY LS CLK -
DNSE POOR ϕ - NS

80 LOTS BLK SHS & FEW GRAY SMOKY
 Δ & LS AA - NS NO ODOR

90) 2 Pcs LT CRM LS w/ POOR INTER-
XLN ϕ w/ SCAT LT STN NO FO
FT OBOR?!

30 MIN: WH - LT CRM - LT TAN LT GRAY
SLI - FOSS LS POOR ϕ - NS NO ODOR

60 MIN: WH - LT GRAY SLI - FOSS
LS POOR ϕ - NS NO ODOR

90 WH - LT TAN SLI - FOSS LS POOR ϕ
NS, NO ODOR

10 FLOOD LT CRM - V. LT TAN SLI - FOSS
LS POOR ϕ - NS INC GRAY SHS

20 WH - LT CRM SLI - FOSS LS W/P-F
SMALL FOSS & INTER - XLN ϕ FAIR AMT
W/ LT & DK STN 6 Pcs W/SSGFO

24) LT OBOR CLEAN & SLI CLK
FEW Pcs W/ SCAT STN 2 Pcs W/SSFO
INC IN CLK

30 MIN: DEGR IN Pcs W/ SCAT STN - B
1 PC W/SSFO SLI CLK

60 MIN: FEW Pcs CRM LS W/ STN
NO FO NO ODOR SLI CLK

30 JUNK FROM DST LOTS SHS

40 FLOOD LT - MD GRAY SHS

50 PRED GRAY - GRN SHS FEW WH
FN - XLN CLK LS - NS NO ODOR

30 Pcs P TRAY

60) FAIR AMT WH - LT CRM TINY FOSS
LS W/P-F FOSS ϕ W/SSLT & GRN GFO

VISC: 62
WT: 8.9
LCM: 2.8

PULLED 30 STD SHORT TRIP
SEVERAL TIGHT
PIPE STRAP 1.89 LONG
SHT = 1" @ 4029'

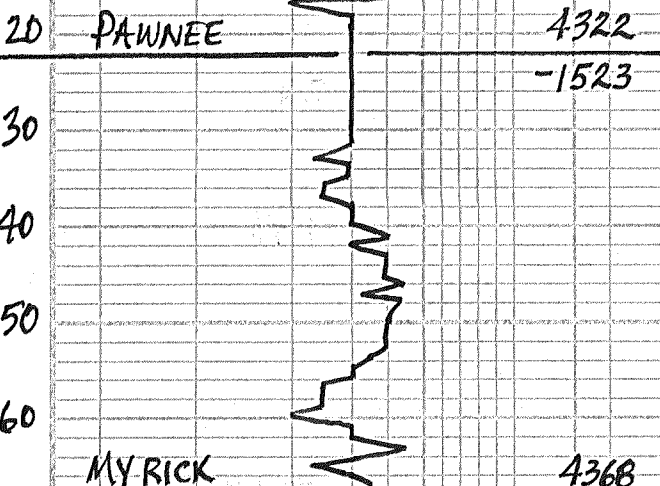
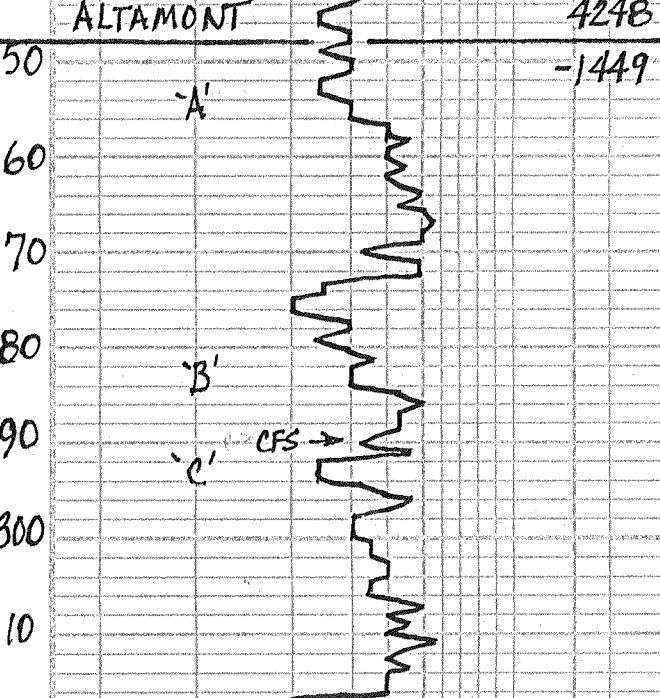
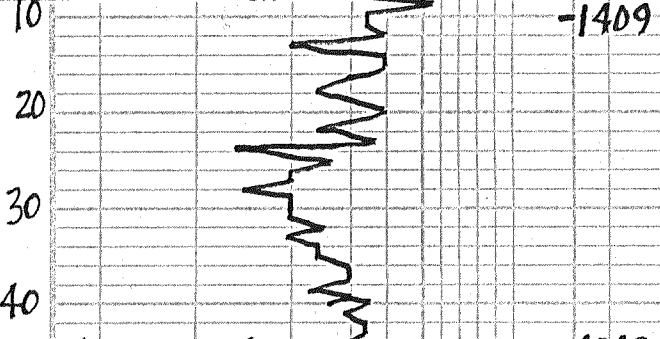
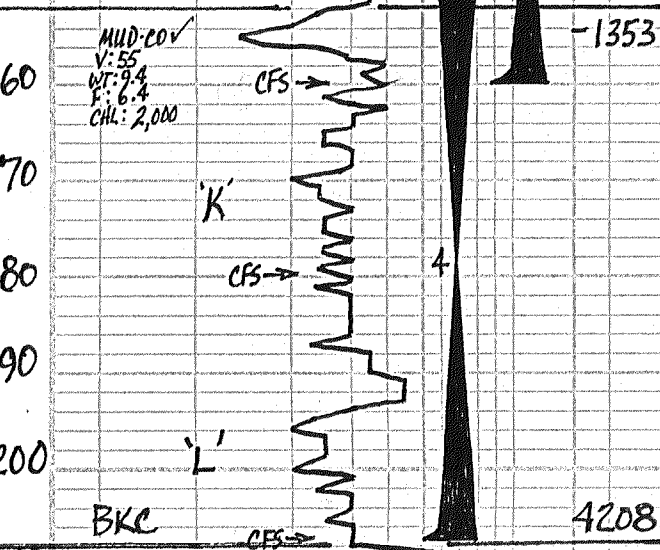
DST #1 4000-4029
TOOL SLID 12' TO BOT.
30-45-45-60
IF: WK BUILT TO 5"
FF: WK BUILT TO 4"
REC: 195' MW = 101.1M, 901.1W
CHL = 41,000 PPM
SIP: 1269-1265
IFP: 60-102 FFP: 105-134
TEMP: 114

MIX MUD

DST #2 4063-4124
30-30-30-30
IF: WK 3/4" BLOW THRU-OUT
FF: DEAD - FLUSH - SURGE
REC: 5' MUD
SIP: 114-115
IFP: 58-60 FFP: 60-64
TEMP: 113°

DST #3 4118-4160
30-30-30-30
IF: V. WK BLOW DIED 17 MINS.
FF: DEAD - FLUSH - SURGE
REC: 2' MUD
SIP: 78-70
IFP: 49-50 FFP: 50-53
TEMP: 111°

50 STARK SH 4152



30 MIN: FLOOD BLK SHS

60 MIN: PRED BLK SHS

70 PRED SHS, GRN-GRN, BRN

80) MOLTEN GRAY LS MEALY POOR ϕ NS STILL GRN-GRN SHS

30 MIN: PRED LT CRM-LT GRN LS FN-MD-XLN POOR ϕ - NS NO ODOR

60 MIN: LT GRN MD-XLN GRN LS POOR ϕ - NS NO ODOR

90 LT GRN FN-MD-XLN LS POOR ϕ NS NO ODOR

00 DK GRN-BLK SHS $\frac{1}{2}$ TAN-ROOF-BEER FN-XLN DNSE LS - NS

07) FAIR AMT WH-LT CRM, TINY FOSS LS W/P-F TINY FOSS - PPT ϕ LOTS W/LT STN FEW SAT STN 10 RS SSLT BGF

30 MIN: WH-LT CRM TINY FOSS LS W/P-F FOSS ϕ W/SSLT BGF FAIR ODR

60 MIN: DECREA IN LS AA WH-LT CRM FN-XLN LS POOR ϕ - NS INC SHS NO ODR

20 PRED GRN-GRN RUST SHS NO ODR

30 PRED GRN-GRN SHS LT GRN V. FN-GRSS-SILTSTONE DIRTY NS

40 FEW WH CRM-FN-XLN LS POOR ϕ NS NO ODR FEW GRN SILTSTONE

50 WH-LT CRM-LT BUFF LS FN-XLN MEALY POOR ϕ - NS NO ODR LT-MD GRN SILTSTONE - NS

60 LT BUFF LT TAN BLOCKY LS FN-XLN POOR ϕ - NS NO ODR

70 LT CRM-WH-LT TAN FN-XLN LS DNSE POOR ϕ - NS NO ODR

80 LT CRM-BUFF FN-XLN LS POOR ϕ - NS NO ODR

90) INC GRN EARTH SHS $\frac{1}{2}$ CRM-BUFF FN-XLN LS POOR ϕ - NS NO ODR

30 MIN: WH-CRM-TAN FN-XLN LS DNSE - CRN POOR ϕ - NS NO ODR

60 MIN: WH-CRM-TAN LS POOR ϕ - NS NO ODR DNSE-CR

00 LOTS GRN-GRN SHS LS AA - NS

10 WH $\frac{1}{2}$ LT TAN LS FN-XLN DNSE-CR POOR ϕ - NS NO ODR

20 V. LT TAN-V. LT GRN FN-XLN LS BLOCKY POOR ϕ - NS NO ODR

30 LT CRM-LT TAN FN-XLN LS DNSE - CRN POOR ϕ - NS NO ODR INC GRN SHS

40 FLOOD WH-LT CRM FN-XLN LS DNSE - CRN SHS - LT POOR ϕ NS NO ODR

50 DULL WH-BUFF FN-XLN LS DNSE - SLL CRN GRAN POOR ϕ NS NO ODR

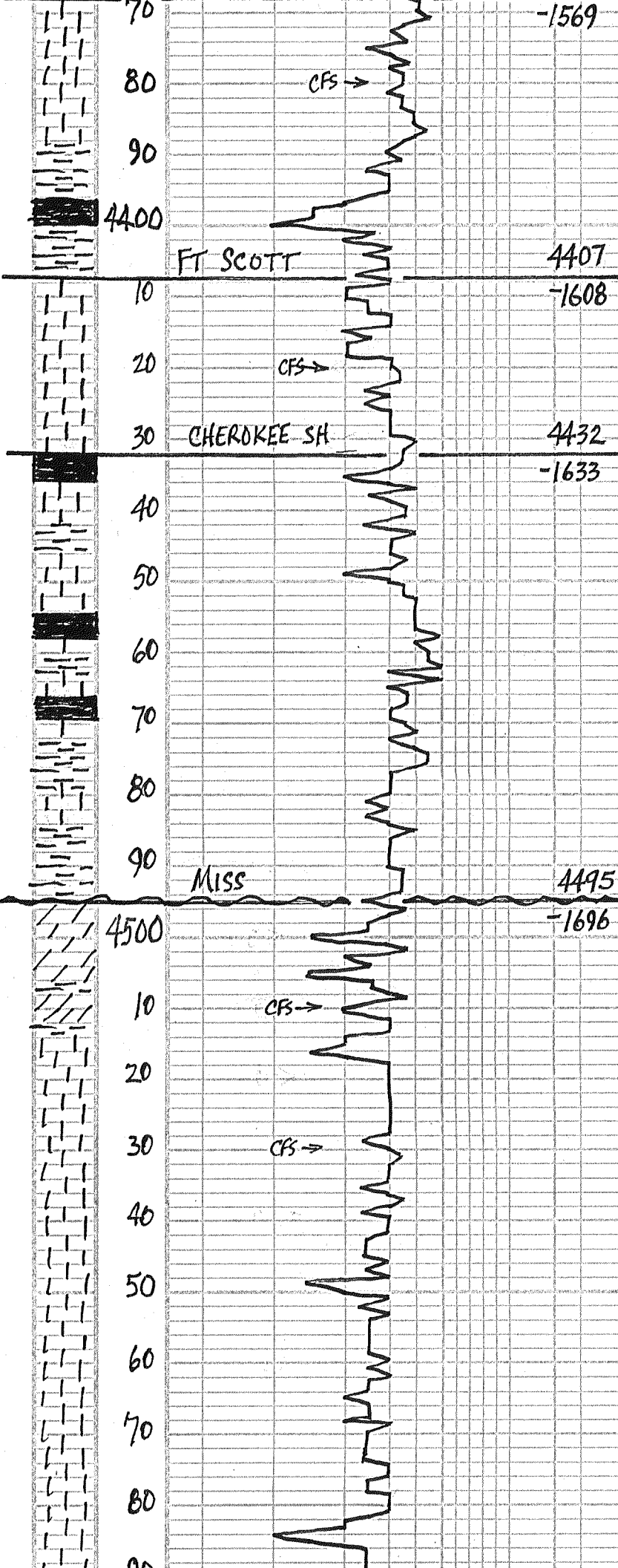
60 PRED BUFF FN-XLN LS POOR ϕ NS NO ODR

70 FLOOD DK GRN-BLK SHS $\frac{1}{2}$ BRN-DK TAN FOSS LS POOR ϕ NS NO ODR

80) FLOOD DK TAN-BRN V. FN-XLN LS

DST #4 4150-4207
 30-45-30-45
 IF: WK $\frac{1}{2}$ " BLOW THRU-OUT
 FF: DEAD-FLUSH SURGE
 REC: 1' MUD + SO
 SIP: 572-216
 IFP: 54-56 FFP: 58-62
 TEMP: 114°

← VISC: 53
 WT: 9.4
 LCM: 1 $\frac{1}{2}$



SCRT FOSS POOR ϕ - NS NO ODOR
 SOME ROOT BEER DNSE LS
 30 MIN: 1 PCS GRM FOSS LS w/ P.F ϕ
 W/STN: FT ODOR ON BREAK
 60 MIN: FLOOD LT BUFF V. LT GRAY
 FN: XLN SMOOTH LS POOR ϕ
 NS NO ODOR

00 PRED LT CRM-BUFF FN: XLN LS
 POOR ϕ - NS NO ODOR & LOTS
 GRAY-GRN EARTH SHS
 10 FLOOD BLK SHS

20) LT CRM-BUFF FN: XLN SH-FOSS
 LS POOR ϕ - NS NO ODOR

30 MIN: WH-LT CRM SH-FOSS
 LS 3 PCS w/ LT STN IN SCAT
 VUG ϕ - NO HO, FT ODOR ON BK
 SH-YAW

45 MIN: WH-LT CRM FN: XLN LS
 POOR ϕ CKY - NS NO ODOR
 30 PRED WH-V. LT TAN LS SU-FOSS
 POOR ϕ - NS NO ODOR

40 PRED LT CRM FN: XLN LS POOR ϕ
 PTLY CKY - NS NO ODOR

50 LOTS BLK SHS & CRM-TAN-GRY LS
 FN: XLN DNSE-CKY NS NO ODOR

60 PURE WH CKY LS FN: XLN POOR
 ϕ - NS NO ODOR

70 FLOOD WH-LT CRM FN: XLN LS
 DNSE-CKY POOR ϕ - NS NO ODOR

80 LT CRM-LT TAN FN: XLN LS POOR ϕ
 NS NO ODOR INC GRAY-BLK SHS

96 WH-LT CRM FN: XLN CKY LS POOR ϕ
 NS PTLY CKY NO ODOR

00 LS AA-NS & FEW LT PEACH-
 LT ORANGE SHARP Δ - NS

10 WH-LT CRM FN: XLN CKY LS &
 FEW ORAN-PEACH Δ - POOR ϕ NS

30 MIN: GOLD PURPLE BRN SHS
 WH-CRM LS FN: XLN DNSE-CKY
 NS NO ODOR FEW LT TAN WEA DOLO NS
 60 MIN: AA FEW LT TAN WEA DOLO
 FAIR VUG ϕ - NS NO ODOR

20 FEW LT TAN DOLO LS w/ FAIR WEA ϕ
 NS NO ODOR

30) WH FN: XLN CKY LS - NS & INC
 VELL-LT GRAY LS - POOR ϕ - NS
 30 MIN: WH-DIRTY VELL MD-XLN
 LS PTLY CKY POOR ϕ - NS NO ODOR
 60 MIN: WH-DIRTY VELL LS AA
 NS NO ODOR

50 CRM-DIRTY VELL MD XLN LS
 P-F INTER-XLN ϕ NS NO ODOR

60 WH CRM-LT VELL-PEACH FN: MD-XLN
 LS POOR ϕ - NS ALSO FEW CL FN-GR
 RTZ SST TIGHT POOR ϕ - NS NO ODOR

70 WH-CRM DIRTY MD-XLN LS
 P-F ϕ - NS NO ODOR PTLY CKY

80 LT GRAY MD-XLN LSTY LS P-F ϕ
 NS NO ODOR

90 FLOOD LT GRAY DOLO LS & GRAY Δ
 POOR ϕ DNSE-MEALY NS NO ODOR

00 LT GRAY LSTY DOLO-LS POOR-FAIR
 ϕ - NS NO ODOR & LOTS SH

← VISC: 51
 WT: 9.5
 LCM: 1#

JET & ADD PRE-MIX & LCM

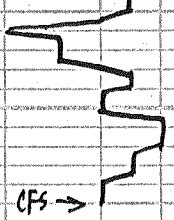
← VISC: 55
 WT: 9.3
 LCM: 3#

← MUD: COV
 VISC: 56 CHL: 2,000
 WT: 9.3 LCM: 2#
 FILT: 6A

90

4600

10



RTD = 4610

LT D = 4614

10 LT GRY CLK - ~~LS~~ LS P-Fd
NS WD ODOR 1 LOTS GRAY SHS

30 MIN: PURE WH CLK LS - NS
LOTS GRN - GRN - BLK SHS

RTD 10:45 AM FRI 2-8-13
SHORT TRIP 10 STDS COND 1 1/2 HR.
CAME OUT FOR LOGS. STARTED
LOGGING 4:00 PM