

OPERATOR

Company: TDI, INC
 Address: 1310 BISON ROAD
 HAYS, KANSAS 67601

Contact Geologist: TOM DENNING
 Contact Phone Nbr: 785-628-2593
 Well Name: LILLY # 1
 Location: NW SE SE NE
 Pool: WILDCAT
 State: KANSAS

API: 15-051-26,487-00-00
 Field: UNNAMED
 Country: USA



1310 BISON ROAD
 HAYS, KANSAS 67601
 (785) 628-2593

Scale 1:240 Imperial

Well Name: LILLY # 1
 Surface Location: NW SE SE NE
 Bottom Location:
 API: 15-051-26,487-00-00
 License Number: 4787
 Spud Date: 4/5/2013 Time: 3:00 PM
 Region: ELLIS COUNTY
 Drilling Completed: 4/11/2013 Time: 10:55 AM
 Surface Coordinates: 2270' FNL & 490' FEL
 Bottom Hole Coordinates:
 Ground Elevation: 2045.00ft
 K.B. Elevation: 2055.00ft
 Logged Interval: 2900.00ft To: 3749.00ft
 Total Depth: 3749.00ft
 Formation: LANSING-KANSAS CITY
 Drilling Fluid Type: CHEMICAL/FRESH WATER GEL

SURFACE CO-ORDINATES

Well Type: Vertical
 Longitude: Latitude:
 N/S Co-ord: 2270' FNL
 E/W Co-ord: 490' FEL

LOGGED BY

Company: SOLUTIONS CONSULTING, INC
 Address: 108 W 35TH
 HAYS, KS 67601

Phone Nbr: (785) 639-1337
 Logged By: Geologist Name: HERB DEINES

CONTRACTOR

Contractor: SOUTHWIND DRILLING, INC.
 Rig #: 1
 Rig Type: MUD ROTARY

Rig Type: MUD ROTARY
 Spud Date: 4/5/2013
 TD Date: 4/11/2013
 Rig Release: 4/12/2013

Time: 3:00 PM
 Time: 10:55 AM
 Time: 11:00 PM

ELEVATIONS

K.B. Elevation: 2055.00ft Ground Elevation: 2045.00ft
 K.B. to Ground: 10.00ft

NOTES

RECOMMENDATION TO PLUG AND ABANDON WELL BASED ON NEGATIVE RESULTS OF THREE DSTS. WELL RAN STRUCTURALLY HIGH BUT LACKED RESERVOIR DEVELOPMENT IN OIL PRODUCING HORIZONS.

OPEN HOLE LOGGING BY PIONEER ENERGY SERVICES: DUAL INDUCTION LOG, DUAL COMPENSATED POROSITY LOG, MICRORESISTIVITY LOG

OPEN HOLE DRILL STEM TESTING BY TRILOBITE TESTING INC: TWO (2) CONVENTIONAL TESTS AND ONE (1) STRADDLE TEST.

SUMMARY OF FORMATION TOPS AND CHRONOLOGY OF DAILY ACTIVITY

LILLY # 1	IRVIN # 1
2270' FNL & 490' FEL, NE/4	NW SW NW NE
Sec. 1-15s-20w	Sec. 6-15s-19w
2045' GL 2055' KB	Reference Well

<u>FORMATION</u>	<u>SAMPLE TOPS</u>	<u>LOG TOPS</u>	<u>LOG TOPS</u>
Anhydrite	1308+ 747	1300+ 755	+754
B-Anhydrite	1346+ 709	1330+ 725	+714
Topeka	3051- 996	3052- 997	- 993
Heebner Shale	3303-1248	3301-1246	-1244
Toronto	3326-1271	3324-1269	-1267
LKC	3350-1295	3348-1293	-1290
BKC	3602-1547	3598-1543	-1537
Marmaton	3645-1590	3648-1593	-1592
Conglomerate SS	3686-1631	3682-1627	NONE
Arbuckle	3706-1651	3706-1651	-1635
RTD	3749-1694		
LTD		3747-1692	

SUMMARY OF DAILY ACTIVITY


4-05-13 RU, spud 3:00 PM, set 8 5/8" surface pipe to 213' w/ 150 sacks
 Common, 2%Gel, 3%CC, plug down 7:10 PM, WOC 8hrs, slope 1/2

4-06-13 534', drilling

4-07-13 2204'drilling, displaced 2616'-2633'

- 4-08-13 2940', drilling
- 4-09-13 3264', DST # 1 lower Topeka-Oread 3220'to 3264'
- 4-10-13 3404', DST # 2 3364' to 3404' LKC "C & D"
- 4-11-13 3667', drilling, RTD 3749'@ 10:55am, logs, straddle DST # 3 3492' to 3540', LKC "I & J", start in hole with test at 7:48PM
- 4-12-13 3749', DST # 3 done at 3:05AM, P&A

DST # 1 LOWER TOPEKA-OREAD TEST SUMMARY

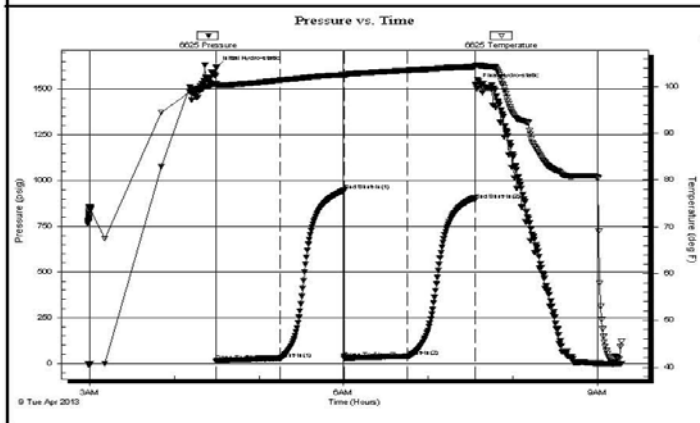
 <p>TRILOBITE TESTING, INC.</p>	DRILL STEM TEST REPORT		
	TDI Inc 1310 Bison Rd Hays Ks 57601 ATTN: Herb Deines	1-15s-20w Lilly #1 Job Ticket: 45520 DST#: 1 Test Start: 2013.04.09 @ 02:58:45	

GENERAL INFORMATION:

Formation: Topeka-Oread	Test Type: Conventional Bottom Hole (Initial)
Deviated: No Whipstock: ft (KB)	Tester: Jeff Brown
Time Tool Opened: 04:29:55	Unit No: 67
Time Test Ended: 09:30:05	Reference Elevations: 2055.00 ft (KB)
Interval: 3220.00 ft (KB) To 3264.00 ft (KB) (TVD)	2044.00 ft (CF)
Total Depth: 3264.00 ft (KB) (TVD)	KB to GR/CF: 11.00 ft
Hole Diameter: 7.88 inches	Hole Condition: Good

Serial #: 6625	Outside	Capacity: 8000.00 psig
Press@RunDepth: 39.35 psig @ 3256.00 ft (KB)	Start Date: 2013.04.09	End Date: 2013.04.09
Start Time: 02:58:46	End Time: 09:17:05	Last Calib.: 2013.04.09
		Time On Btm: 2013.04.09 @ 04:29:45
		Time Off Btm: 2013.04.09 @ 07:33:35

TEST COMMENT: IFF=Fair blow built to 6 1/4 in
 ISI=Dead no blow back
 FFP=Fair blow built to 9 1/2 in
 FSI=Dead no blow back


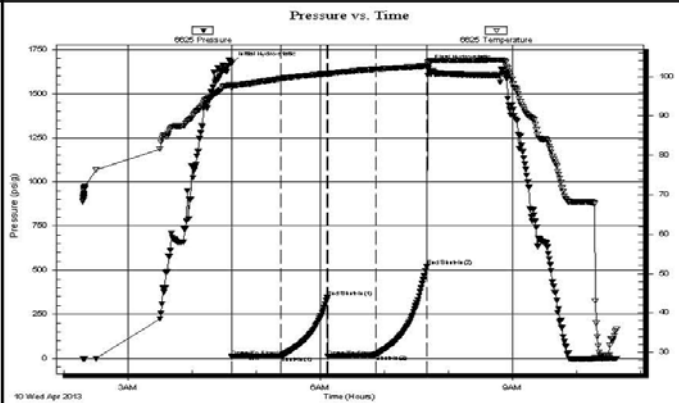


PRESSURE SUMMARY			
Time (Min.)	Pressure (psig)	Temp (deg F)	Annotation
0	1616.98	100.55	Initial Hydro-static
1	13.46	100.26	Open To Flow (1)
46	26.91	101.33	Shut-In(1)
91	946.54	102.53	End Shut-In(1)
91	28.46	102.45	Open To Flow (2)
136	39.35	103.48	Shut-In(2)
184	895.08	104.20	End Shut-In(2)
184	1524.34	104.38	Final Hydro-static

Recovery		
Length (ft)	Description	Volume (bbl)
66.00	V SOCGM 5%G 5%O 90%M	0.93

Gas Rates			
	Choke (inches)	Pressure (psig)	Gas Rate (Mcf/d)

DST # 2 LKC "C" AND "D" TEST SUMMARY

 <p>TRILOBITE TESTING, INC.</p>	DRILL STEM TEST REPORT																																						
	TDI Inc 1310 Bison Rd Hays Ks 57601 ATTN: Herb Deines	1-15s-20w Lilly #1 Job Ticket: 48521 Test Start: 2013.04.10 @ 02:17:37	DST#: 2																																				
GENERAL INFORMATION:																																							
Formation: Lansing-C-D Deviated: No Whipstock: ft (KB) Time Tool Opened: 04:37:17 Time Test Ended: 10:38:57		Test Type: Conventional Bottom Hole (Reset) Tester: Jeff Brown Unit No: 67																																					
Interval: 3364.00 ft (KB) To 3404.00 ft (KB) (TVD) Total Depth: 3404.00 ft (KB) (TVD) Hole Diameter: 7.88 inches Hole Condition: Good		Reference Elevations: 2055.00 ft (KB) 2044.00 ft (CF) KB to GR/CF: 11.00 ft																																					
Serial #: 6625 Outside Press@RunDepth: 21.61 psig @ 3399.00 ft (KB) Start Date: 2013.04.10 End Date: 2013.04.10 Start Time: 02:17:38 End Time: 10:37:57 Capacity: 8000.00 psig Last Calib.: 2013.04.10 Time On Btm: 2013.04.10 @ 04:37:07 Time Off Btm: 2013.04.10 @ 07:41:07																																							
TEST COMMENT: IFF=Good blow BOB in 44 min ISI=Dead no blow back FFP=Good blow BOB in 6 1/2 min FSI=Dead no blow back																																							
Pressure vs. Time		PRESSURE SUMMARY																																					
		<table border="1" style="width:100%; border-collapse: collapse;"> <thead> <tr> <th>Time (Min.)</th> <th>Pressure (psig)</th> <th>Temp (deg F)</th> <th>Annotation</th> </tr> </thead> <tbody> <tr><td>0</td><td>1672.59</td><td>98.02</td><td>Initial Hydro-static</td></tr> <tr><td>1</td><td>9.96</td><td>97.09</td><td>Open To Flow (1)</td></tr> <tr><td>46</td><td>13.38</td><td>99.44</td><td>Shut-In(1)</td></tr> <tr><td>90</td><td>348.30</td><td>100.74</td><td>End Shut-In(1)</td></tr> <tr><td>90</td><td>10.65</td><td>100.75</td><td>Open To Flow (2)</td></tr> <tr><td>135</td><td>21.61</td><td>101.85</td><td>Shut-In(2)</td></tr> <tr><td>183</td><td>521.80</td><td>102.72</td><td>End Shut-In(2)</td></tr> <tr><td>184</td><td>1656.77</td><td>103.55</td><td>Final Hydro-static</td></tr> </tbody> </table>		Time (Min.)	Pressure (psig)	Temp (deg F)	Annotation	0	1672.59	98.02	Initial Hydro-static	1	9.96	97.09	Open To Flow (1)	46	13.38	99.44	Shut-In(1)	90	348.30	100.74	End Shut-In(1)	90	10.65	100.75	Open To Flow (2)	135	21.61	101.85	Shut-In(2)	183	521.80	102.72	End Shut-In(2)	184	1656.77	103.55	Final Hydro-static
Time (Min.)	Pressure (psig)	Temp (deg F)	Annotation																																				
0	1672.59	98.02	Initial Hydro-static																																				
1	9.96	97.09	Open To Flow (1)																																				
46	13.38	99.44	Shut-In(1)																																				
90	348.30	100.74	End Shut-In(1)																																				
90	10.65	100.75	Open To Flow (2)																																				
135	21.61	101.85	Shut-In(2)																																				
183	521.80	102.72	End Shut-In(2)																																				
184	1656.77	103.55	Final Hydro-static																																				
Recovery		Gas Rates																																					
<table border="1" style="width:100%; border-collapse: collapse;"> <thead> <tr> <th>Length (ft)</th> <th>Description</th> <th>Volume (bbt)</th> </tr> </thead> <tbody> <tr><td>31.00</td><td>SOCM 10%O 90%M</td><td>0.43</td></tr> <tr><td>0.00</td><td>157-GIP</td><td>0.00</td></tr> <tr><td> </td><td> </td><td> </td></tr> <tr><td> </td><td> </td><td> </td></tr> <tr><td> </td><td> </td><td> </td></tr> </tbody> </table>		Length (ft)	Description	Volume (bbt)	31.00	SOCM 10%O 90%M	0.43	0.00	157-GIP	0.00										<table border="1" style="width:100%; border-collapse: collapse;"> <thead> <tr> <th>Choke (inches)</th> <th>Pressure (psig)</th> <th>Gas Rate (Mcf/d)</th> </tr> </thead> <tbody> <tr><td> </td><td> </td><td> </td></tr> <tr><td> </td><td> </td><td> </td></tr> <tr><td> </td><td> </td><td> </td></tr> </tbody> </table>		Choke (inches)	Pressure (psig)	Gas Rate (Mcf/d)															
Length (ft)	Description	Volume (bbt)																																					
31.00	SOCM 10%O 90%M	0.43																																					
0.00	157-GIP	0.00																																					
Choke (inches)	Pressure (psig)	Gas Rate (Mcf/d)																																					
* Recovery from multiple tests																																							

DST # 3 STRADDLE TEST LKC "I" AND "J" TEST SUMMARY

 <p>TRILOBITE TESTING, INC.</p>	DRILL STEM TEST REPORT		
---	-------------------------------	--	--



TRILOBITE TESTING, INC.

TDI Inc
1310 Bison Rd
Hays Ks 57601
ATTN: Herb Deines

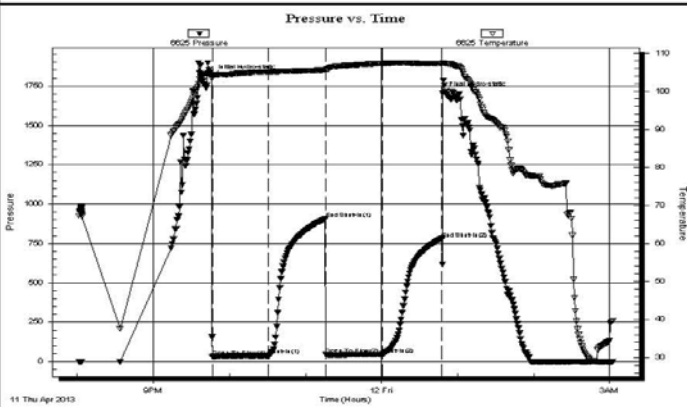
1-15s-20w
Lilly #1
Job Ticket: 48522 **DST#: 3**
Test Start: 2013.04.11 @ 20:01:12

GENERAL INFORMATION:

Formation: **LKC-H-I-J**
Deviated: No Whipstock: ft (KB)
Time Tool Opened: 21:46:27
Time Test Ended: 03:05:06
Test Type: Conventional Straddle (Reset)
Tester: Jeff Brown
Unit No: 67
Interval: **3492.00 ft (KB) To 3540.00 ft (KB) (TVD)**
Reference Elevations: 2055.00 ft (KB)
Total Depth: 3748.00 ft (KB) (TVD)
2044.00 ft (CF)
Hole Diameter: 7.88 inches Hole Condition: Good
KB to GR/CF: 11.00 ft

Serial #: 6625 Outside
Press@RunDepth: 46.35 psig @ 3528.00 ft (KB) Capacity: 8000.00 psig
Start Date: 2013.04.11 End Date: 2013.04.12 Last Calib.: 2013.04.12
Start Time: 20:01:13 End Time: 03:02:07 Time On Btm: 2013.04.11 @ 21:46:07
Time Off Btm: 2013.04.12 @ 00:48:17

TEST COMMENT: IFF=Weak blow built to 3 1/2 in
IS=Dead no blow back
FFP=Weak surface blow built to 1 in
FS=Dead no blow back



PRESSURE SUMMARY

Time (Min.)	Pressure (psig)	Temp (deg F)	Annotation
0	1814.77	104.16	Initial Hydro-static
1	30.70	103.87	Open To Flow (1)
45	37.99	105.08	Shut-In(1)
90	906.19	105.61	End Shut-In(1)
90	44.96	105.54	Open To Flow (2)
135	46.35	107.32	Shut-In(2)
182	777.81	107.28	End Shut-In(2)
183	1703.91	107.51	Final Hydro-static

Recovery

Length (ft)	Description	Volume (bbl)
41.00	Mud w ith oil spot's	0.58

Gas Rates

	Choke (inches)	Pressure (psig)	Gas Rate (Mcf/d)

* Recovery from multiple tests

Trilobite Testing, Inc

Ref. No: 48522

Printed: 2013.04.12 @ 03:39:35

ROCK TYPES

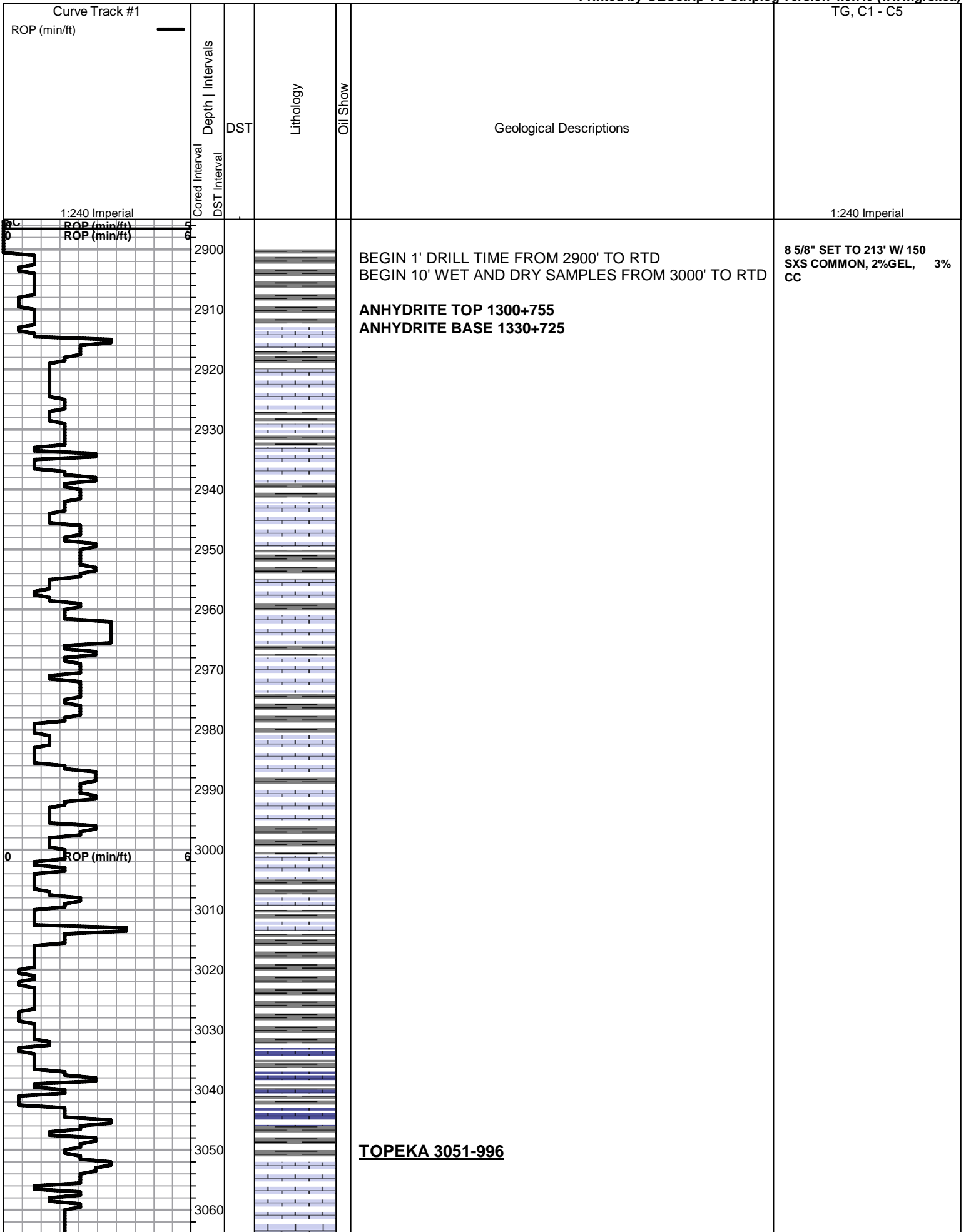
- Clystgy Dolprim Dolsec
- Lmst fw<7 Lmst fw>7 shale, grn
- shale, gry Carbon Sh shale, red
- Ss Stlt Dol Lime
- Lscong1 Cg1Sandy

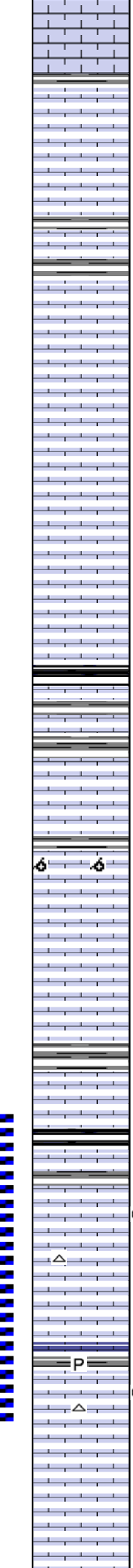
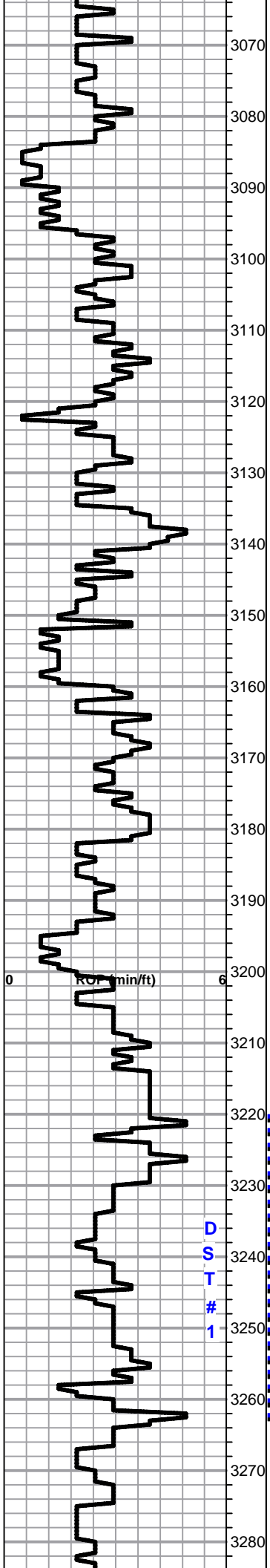
ACCESSORIES

- MINERAL**
▲ Chert, dark
Z Nodules
P Pyrite
.* Sandy
~ Varicolored chert
△ Chert White
- FOSSIL**
○ Oolite
⊕ Oomoldic

OTHER SYMBOLS

DST
 ■ DST Int
 ■ DST alt
 ■ Core





Lime, lt brn-lt grayish brn, fnxln, fusulinids

Lime, lt-med brn, fnxln-granular, chalky, sticky in part

Shale, black carbonaceous, fissile, blocky

Shale, lt-med gray, soft blocky with sticky clumps in part

Lime, crm-lt brn, fn-vfxln, lithographic, very clean

Lime, crm-lt brn, fnxln with fine oolmoldic in part, NS, No Wet Cut

Lime, lt brn, fnxln-granular, bedded chalk in part

Lime, lt-med brn, fnxln-granular, slight bed chalk

Lime, lt-dark brn, fnxln

Shale, black carbonaceous, fissile, blocky

Lime, med brn-grayish brn, fn-vfxln

Lime, crm-lt brn, granular, trace of oil staining in interxln porosity, lt odor

Lime, lt grayish brn, fnxln-granular, soft on crush, chalk in part

Lime, lt-med brn, fnxln-granular

Shale, lt gray, soft blocky with sticky clumps in part

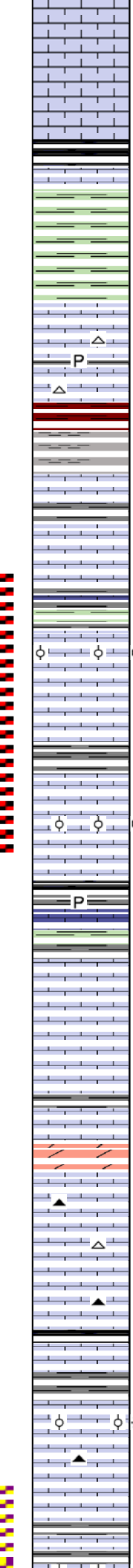
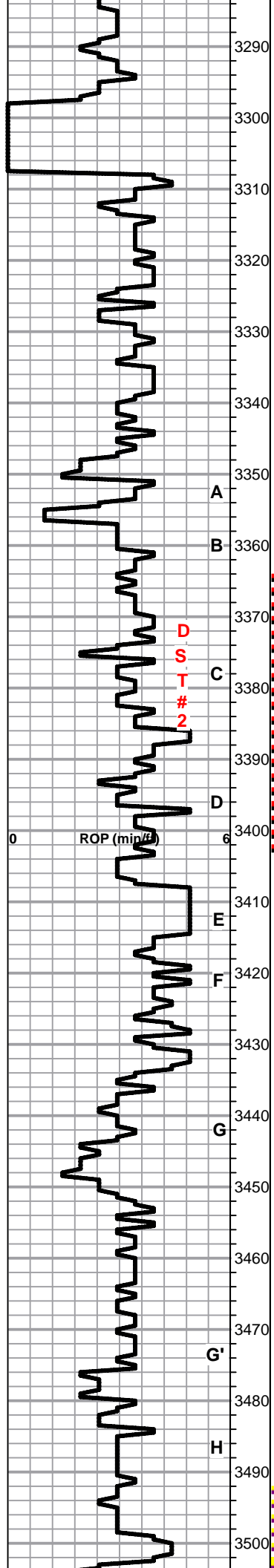
Lime, lt brn, granular, trace staining, lt odor

Lime, lt brn-lt grayish brn, fnxln-granular, fusulinids

D
S
T

1

DST # 1 3220' TO 3264' SEE
HEADER FOR TEST
SUMMARY



Lime, lt brn, fnxln-granular, slight bedded chalk in part

HEEBNER SHALE 3303-1248

Shale, black carbonaceous, fissile, blocky
Lime, lt grayish brn, fnxln

GEOLOGRAPH CABLE BROKE

Shale, lime green, soft blocky with sticky clumps in part

TORONTO SPL 3326-1271

Lime, white-crm, fn-vfxln, lt bedded chalk, NS

Lime, crm-lt brn, fnxln, slight bedded chalk in part, NS

Shale, lt red wash, soft, dove gray, soft mud clumps

LKC SPL 3350-1295

Lime, med brn, fnxln, slightly fossiliferous
Shale, lt gray, soft forming soft sticky mud clumps

Lime, lt-med brn, fn-micro xln

Shale, lime green-lt gray, soft forming sticky mud clumps

Lime, crm-lt brn, mostly fnxln with thin bed of oolitic material, lt scattered stain, NFO, inter oolitic porosity

DST # 2 3364' TO 3404' SEE
HEADER FOR TEST
SUMMARY

CFS @ 3385'

Lime, crm-tan, fnxln, chalk in part

Shale, med gray, soft blocky

Lime, crm-lt brn, mostly fnxln, thin bed of oolitic material, spotty lt stain, lt odor, interoolitic porosity

CFS @ 3404'

Lime, lt-med brn, fnxln

Shale, gray-black carbonaceous,
Lime, lt gray, fn-vfxln
Shale, lime green-dove gray, soft forming sticky clumps

Lime, white-crm, vfxln, lithographic, NS

Lime, crm-lt brn, fn-vfxln, NS

Lime, crm-lt brn, fnxln

Lime, lt brn, granular with granular dolomite in part, No Wet Cut

Lime, crm-lt brn-offwhite, fn-micro xln, slight chalk

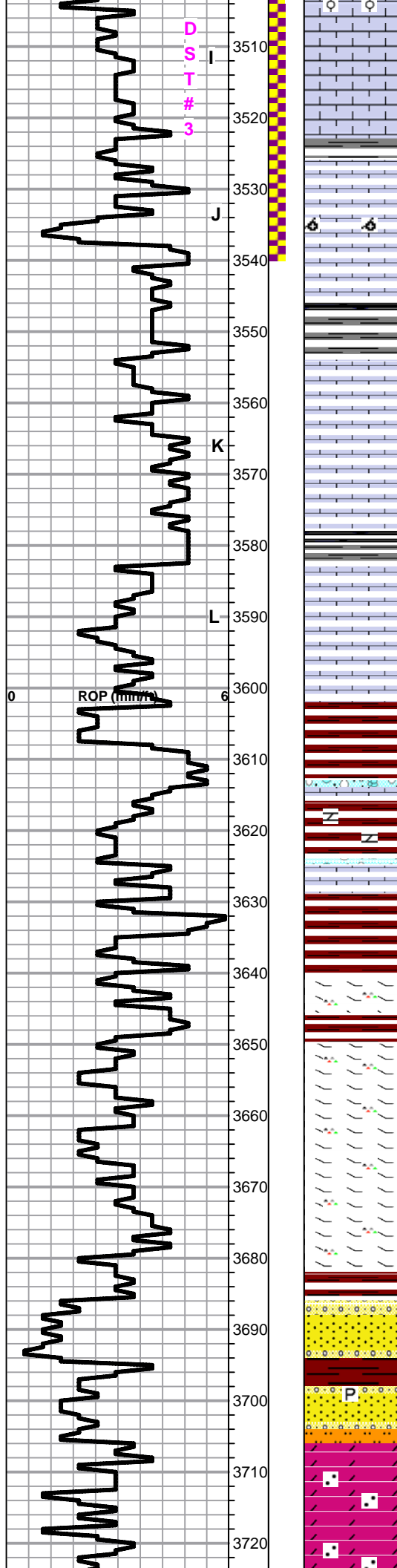
Lime, crm-lt brn, fn-micro xln

Shale, gray-black carbonaceous
Lime, lt-med brn, fnxln
Shale, lt gray, soft forming sticky mud clumps

Lime, crm-lt brn, fnxln, slight bedded chalk, VLT Odor, Source ?

Lime, crm-lt brn, fn-micro xln, slightly fossiliferous, slight chalk

Lime, crm, mostly fnxln, thin oolitic bed with bed chalk



Lime, crm, mostly fnxn, thin oolitic bed with bed chalk, gilsonitic, sparry calcite backfill limiting porosity & permeability, lt odor, trace free oil

Lime, crm, fnxn, slight bedded chalk

Lime, crm, fnxn, few fossiliferous chips with trace oil staining

Lime, white, oolmoldic, NS

Lime, lt brn-lt gray, fn-vfxn, bedded chalk in part

Shale, dark gray-grayish green, soft blocky

Lime, lt brn, fn-micro xln, slight chalk

Lime, lt-med brn, fn-micro xln

Shale, gray-black carbonaceous, soft blocky

Lime, lt-med brn, fn-micro xln, increasing chalk content

Lime, lt-med brn, fnxn, slight chalk, NS

BKC SPL 3602-1547

Shale, red wash, reddish brn-deep red, soft

Lime, lt brn, micro xln, hard on crush, clastic lime in part

Shale, reds, brns, greens, soft blocky, chert nodules

Shale, red, very soft mud

Shale, reds, brn, soft blocky-sticky mud

MARMATON ELog 3648-1593

Lime, crm, fnxn, dolomitic, orange cherts, fresh, sharp

Lime, crm-lt brn, fnxn-granular, dolomitic, hard on crush, NS

Lime, crm, fnxn, dolomitic, hard on crush

Lime, crm, fnxn, dolomitic

CONGLOMERATE SAND SPL 3686-1631

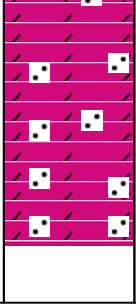
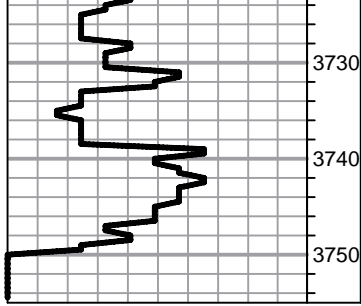
Sandstone, quartz, mostly cemented w/ white clay, scattered SFO on crush in friable uncemented clusters

Sandstone, quartz, friable-cemented, mixed with cherts

ARBUCKLE ELog 3706-1651

Dolomite, crm-lt brn, granular w quartz granules, NS

Dolomite, crm, granular w quartz granules



Dolomite, crm, granular w quartz granules, cxln in part

Dolomite, crm, granular, quartz granules, fn-cxln

RTD 3749-1694 LTD 3747-1692

SLOPE 1 3/4 DEGREE

QUALITY OILWELL CEMENTING, INC.

Federal Tax I.D.# 20-2886107

Phone 785-483-2025
Cell 785-324-1041

Home Office P.O. Box 32 Russell, KS 67665

No. 6683

Date	4-5-13	Sec.	1	Twp.	15	Range	20	County	Ellis	State	KS	On Location		Finish	7:00 p.m.
Lease								Location				Antonino SW 1/23 Winto			
Contractor								Well No.				Owner			
Type Job								To Quality Oilwell Cementing, Inc.				You are hereby requested to rent cementing equipment and furnish cementer and helper to assist owner or contractor to do work as listed.			
Hole Size								Charge To				TJF			
Csg.								Depth				Street			
Tbg. Size								Depth				City State			
Tool								Depth				The above was done to satisfaction and supervision of owner agent or contractor.			
Cement Left in Csg.								Shoe Joint				Cement Amount Ordered			
Meas Line								Displace				150 com 3%CC 2%CC			
EQUIPMENT								Common				150			
Pumptrk								No. Cementer				Poz. Mix			
Bulktrk								No. Driver				Gel.			
Bulktrk								No. Driver				Calcium			
JOB SERVICES & REMARKS								Hulls							
Remarks:								Salt							
Rat Hole								Flowseal							
Mouse Hole								Kol-Seal							
Centralizers								Mud CLR 48							
Baskets								CFL-117 or CD110 CAF 38							
D/V or Port Collar								Sand							
8 5/8 on bottom. ESK Circulation.								Handling				158			
Mix 150cc + Displace.								Mileage							
FLOAT EQUIPMENT								Guide Shoe							
Ann + Circulated								Centralizer							
								Baskets				8 5/8 sewage			
								AFU Inserts							
								Float Shoe							
								Latch Down							
								Pumptrk Charge				Surface			
								Mileage				15			
								Tax							
								Discount							
X Signature								Total Charge							

Date 4-12-03 District Great Bend, KS Ticket No. 57334
 Company TLP INC Rig SOUTHWIND #1
 Lease Lilly Well No. 1
 County Ellis State KS
 Location 5W 1/2 S Field _____

CASING DATA: Conductor PTA Squeeze Misc
 Surface Intermediate Production Liner
 Size 4-1/2 Type _____ Weight T.D. Collar _____

Casing Depths: Top K13 Bottom 3656

Drill Pipe: Size 4 1/2 Weight 16.6 Collars X-hole
 Open Hole: Size _____ T.D. _____ ft. P.B. to _____ ft.

CAPACITY FACTORS:
 Casing: Bbbls/Lin. ft. 0.0637 Lin. ft./Bbl. 15.70
 Open Holes: Bbbls/Lin. ft. _____ Lin. ft./Bbl. _____
 Drill Pipe: Bbbls/Lin. ft. 0.0142 Lin. ft./Bbl. 70.32
 Annulus: Bbbls/Lin. ft. _____ Lin. ft./Bbl. _____
 Perforations: From _____ ft. to _____ ft. Amt. _____

CEMENT DATA:
 Spacer Type: Freshwater
 Amt. _____ Sks Yield _____ ft³/sk Density 8.34 PPG

LEAD: Pump Time _____ hrs. Type _____
 Excess _____
 Amt. _____ Sks Yield _____ ft³/sk Density _____ PPG

TAIL: Pump Time Thicken Time hrs. Type 60% cement A
4104.032 410 gal 1/4 Flt Excess _____
 Amt. 270 Sks Yield 1.40 ft³/sk Density 14.5 PPG

WATER: Lead _____ gals/sk Tail _____ gals/sk Total _____ Bbls.

Pump Trucks Used 366-Charles K - Mike Scathorn
 Bulk Equip. 344-170 - Joel M

Floater Equip: Manufacturer _____
 Shoe: Type _____ Depth _____
 Floater: Type _____ Depth _____
 Centralizers: Quantity _____ Plugs Top _____ Btm. _____
 Stage Collars _____
 Special Equip. _____
 Disp. Fluid Type Freshwater Amt. _____ Bbls. Weight 6.34 PPG
 Mud Type None Weight 9.1 PPG

COMPANY REPRESENTATIVE _____

CEMENTER Dustin C

TIME		PRESSURES PSI		FLUID PUMPED DATA			REMARKS
AM/PM		DRILL PIPE CASING	ANNULUS	TOTAL FLUID	Pumped Per Time Period	RATE Bbls Min.	
							ON location - Aigup Had safety meeting
							Run 4 1/2 Drill pipe Fill hole with 6' High Mud Hook up cement pump
							1. 3656 - 60 SKS
							2. 1325 - 25 SKS
							3. 550 - 120 SKS
							4. 265 - 40 SKS
							5. 40 - 10 SKS
							6. BH - 30 SKS
							7. MH - 15 SKS
							plug Down 11:30 AM
							Aig, Down