

**OPERATOR**

Company: TDI, INC  
 Address: 1310 BISON ROAD  
 HAYS, KANSAS 67601

Contact Geologist: TOM DENNING  
 Contact Phone Nbr: 785-628-2593  
 Well Name: GR # 2  
 Location: N2 NW SW NW Sec 14-15s-19w  
 Pool: INFIELD  
 State: KANSAS  
 API: 15-051-26,504-00-00  
 Field: MARTINA NORTH  
 Country: USA



**TDI, Inc.**  
 1310 BISON ROAD  
 HAYS, KANSAS 67601  
 (785) 628-2593

Scale 1:240 Imperial

Well Name: GR # 2  
 Surface Location: N2 NW SW NW Sec 14-15s-19w  
 Bottom Location:  
 API: 15-051-26,504-00-00  
 License Number: 4787  
 Spud Date: 4/19/2013  
 Region: ELLIS COUNTY  
 Drilling Completed: 4/25/2013  
 Surface Coordinates: 1565' FNL & 330' FWL  
 Bottom Hole Coordinates:  
 Ground Elevation: 2009.00ft  
 K.B. Elevation: 2019.00ft  
 Logged Interval: 2900.00ft  
 Total Depth: 3750.00ft  
 Formation: LANSING-KANSAS CITY  
 Drilling Fluid Type: CHEMICAL/FRESH WATER GEL

Time: 2:15 PM  
 Time: 8:28 PM  
 To: 3750.00ft

**SURFACE CO-ORDINATES**

Well Type: Vertical  
 Longitude: Latitude:  
 N/S Co-ord: 1565' FNL  
 E/W Co-ord: 330' FWL

**LOGGED BY**

Company: SOLUTIONS CONSULTING, INC.  
 Address: 108 W 35TH  
 HAYS, KS 67601

Phone Nbr: (785) 639-1337  
 Logged By: Geologist  
 Name: HERB DEINES

**CONTRACTOR**

Contractor: SOUTHWIND DRILLING, INC.  
 Rig #: 1  
 Rig Type: MUD ROTARY

Rig Type: MUD ROTARY  
 Spud Date: 4/19/2013  
 TD Date: 4/25/2013  
 Rig Release: 4/26/2013

Time: 2:15 PM  
 Time: 8:28 PM  
 Time: 9:00 PM

**ELEVATIONS**

K.B. Elevation: 2019.00ft                      Ground Elevation: 2009.00ft  
 K.B. to Ground: 10.00ft

**NOTES**

RECOMMENDATION TO RUN PRODUCTION CASING BASED ON POSITIVE RESULTS OF DST # 1 AND FAVORABLE STRUCTURE.

OPEN HOLE LOGGING BY PIONEER ENERGY SERVICES: DUAL INDUCTION LOG, DUAL COMPENSATED POROSITY LOG, MICRORESISTIVITY LOG.

OPEN HOLE DRILL STEM TESTING BY TRILOBITE TESTING INC: TWO (2) CONVENTIONAL TESTS AND ONE (1) STRADDLE TEST

**FORMATION TOPS SUMMARY AND CHRONOLOGY OF DAILY ACTIVITY**

**GR # 2**  
**1565' FNL & 330' FWL, NW/4**  
**Sec. 14-15s-19w**  
**2009' GL 2019' KB**

**GR # 1**  
**NE SW SW NW**  
**Sec 14-15s-19w**  
**Reference Well**


<u>FORMATION</u>	<u>SAMPLE TOPS</u>	<u>LOG TOPS</u>	<u>LOG TOPS</u>
Anhydrite	1220+ 799	1221+ 798	+ 806
B-Anhydrite	1255+ 764	1253+ 766	+ 768
Topeka	3000- 981	2998- 979	- 970
Heebner Shale	3264-1245	3262-1243	-1241
Toronto	3282-1263	3282-1278	-1265
LKC	3307-1288	3306-1287	-1288
BKC	3547-1528	3552-1533	-1530
Marmaton	3590-1571	3595-1576	-1573
Conglomerate SS	3605-1586	3637-1618	-1621
Arbuckle	3659-1640	3662-1643	-1639
RTD	3750-1731		
LTD		3751-1732	

**SUMMARY OF DAILY ACTIVITY**

4-19-13      RU, spud 2:15 PM,  
 4-20-13      1229', set 8 5/8" surface pipe to 1227.3' w/ 375 sxs SMD, plug down  
                  3:00 PM, WOC 12hrs, slope 2 degrees  
 4-21-13      1346,'drilling,

- 4-22-13 2400', drilling, displaced 2766' to 2797'
- 4-23-13 3060', drilling
- 4-24-13 3350', TIWB after DST # 1 3314' to 3350' "C" LKC, DST # 2 3348' TO 3384' "D" & "F", slope 1 degree @ 3350'
- 4-25-13 3464', CFS @3480', RTD @ 8:28PM, mini short trip, CCH 1 ½ hrs
- 4-26-13 3750' logs, straddle test # 3 3460' to 3475' "I" LKC, LDDP, run production casing.

**DST # 1 3314' TO 3350' "C" LKC CONVENTIONAQL TEST**

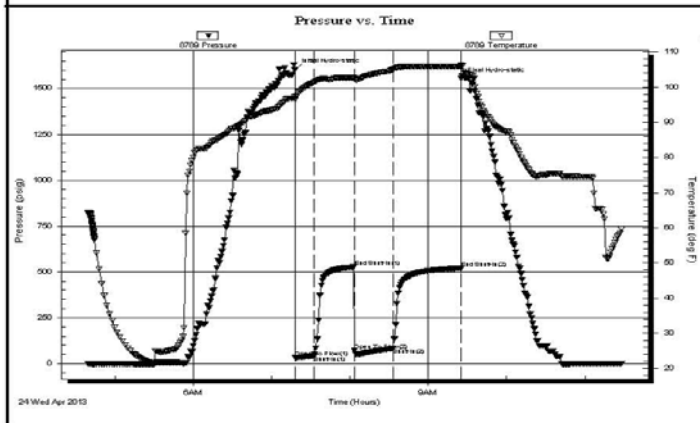
 <p><b>TRILOBITE TESTING, INC.</b></p>	<b>DRILL STEM TEST REPORT</b>		
	TDI, Inc. 1310 Bison Road Hays, KS. 67601 ATTN: Herb Deines	<b>14-15s-19w-Ellis</b>  <b>GR #2</b> Job Ticket: 52228 <b>DST#: 1</b> Test Start: 2013.04.24 @ 04:39:14	

**GENERAL INFORMATION:**

Formation: <b>C</b>	Test Type: Conventional Bottom Hole (Initial)
Deviated: No    Whipstock: 0.00 ft (KB)	Tester: Jason McLemore
Time Tool Opened: 07:17:59	Unit No: 54
Time Test Ended: 11:27:59	Reference Elevations: 2023.00 ft (KB)
<b>Interval: 3314.00 ft (KB) To 3350.00 ft (KB) (TVD)</b>	2013.00 ft (CF)
Total Depth: 3350.00 ft (KB) (TVD)	KB to GR/CF: 10.00 ft
Hole Diameter: 7.80 inches	Hole Condition: Good

<b>Serial #: 8789</b>	<b>Inside</b>	Capacity: 8000.00 psig
Press@RunDepth: 82.81 psig @ 3317.00 ft (KB)	Start Date: 2013.04.24	Last Calib.: 2013.04.24
Start Time: 04:39:16	End Date: 2013.04.24	Time On Btm: 2013.04.24 @ 07:17:44
	End Time: 11:27:59	Time Off Btm: 2013.04.24 @ 09:25:14

**TEST COMMENT:** IFP-Strong, BOB in 2 Min.  
 ISI-Blow back Built to 1"  
 FFP-Strong, BOB in 1 Min.  
 FSI-Blow back Built to 4"


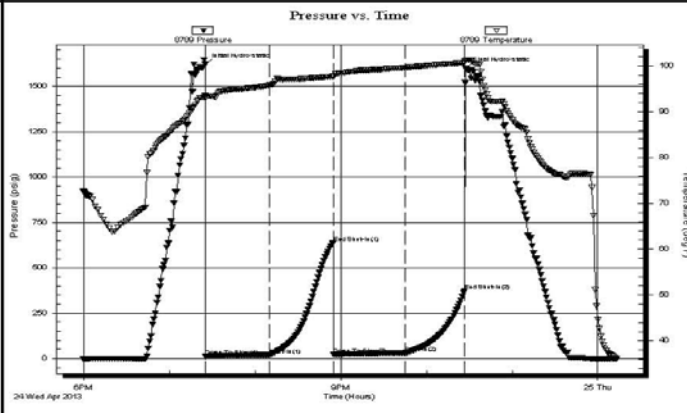


PRESSURE SUMMARY			
Time (Min.)	Pressure (psig)	Temp (deg F)	Annotation
0	1604.42	97.17	Initial Hydro-static
1	33.04	96.47	Open To Flow (1)
15	43.21	101.47	Shut-In(1)
46	526.97	102.67	End Shut-In(1)
46	70.43	102.42	Open To Flow (2)
76	82.81	105.09	Shut-In(2)
127	520.05	105.92	End Shut-In(2)
128	1554.73	106.35	Final Hydro-static

Recovery		
Length (ft)	Description	Volume (bbl)
70.00	Free Oil	0.98
120.00	Muddy Frothy Oil-50%G-40%O-10%M	1.68
0.00	2210' Gas In Pipe	0.00

Gas Rates			
	Choke (inches)	Pressure (psig)	Gas Rate (Mcf/d)

**DST # 2 3348' TO 3384' "D" "F" LKC CONVENTIONAL TEST**

 <p><b>TRILOBITE TESTING, INC.</b></p>	<p><b>DRILL STEM TEST REPORT</b></p>																																						
<p>TDI, Inc. 1310 Bison Road Hays, KS. 67601 ATTN: Herb Deines</p>	<p><b>14-15s-19w-Ellis</b></p>		<p><b>GR #2</b> Job Ticket: 52229 Test Start: 2013.04.24 @ 17:59:17</p>																																				
<p><b>GENERAL INFORMATION:</b></p>																																							
<p>Formation: <b>D-F</b> Deviated: No Whipstock: 0.00 ft (KB) Time Tool Opened: 19:25:02 Time Test Ended: 00:13:32</p>		<p>Test Type: Conventional Bottom Hole (Reset) Tester: Jason McLemore Unit No: 54</p>																																					
<p>Interval: <b>3348.00 ft (KB) To 3384.00 ft (KB) (TVD)</b> Total Depth: 3384.00 ft (KB) (TVD) Hole Diameter: 7.80 inches Hole Condition: Good</p>		<p>Reference Elevations: 2023.00 ft (KB) 2013.00 ft (CF) KB to GR/CF: 10.00 ft</p>																																					
<p><b>Serial #: 8789 Inside</b> Press@RunDepth: 31.78 psig @ 3351.00 ft (KB) Start Date: 2013.04.24 End Date: 2013.04.25 Start Time: 17:59:19 End Time: 00:13:32</p>		<p>Capacity: 8000.00 psig Last Calib.: 2013.04.25 Time On Btm: 2013.04.24 @ 19:24:47 Time Off Btm: 2013.04.24 @ 22:27:32</p>																																					
<p>TEST COMMENT: IFF-Weak Blow , Built to 5" ISI-Dead FFP-Good Blow , Built to 8" FSI-Dead</p>																																							
		<p><b>PRESSURE SUMMARY</b></p>																																					
		<table border="1" style="width:100%; border-collapse: collapse;"> <thead> <tr> <th>Time (Min.)</th> <th>Pressure (psig)</th> <th>Temp (deg F)</th> <th>Annotation</th> </tr> </thead> <tbody> <tr><td>0</td><td>1621.97</td><td>93.49</td><td>Initial Hydro-static</td></tr> <tr><td>1</td><td>12.39</td><td>92.95</td><td>Open To Flow (1)</td></tr> <tr><td>46</td><td>20.01</td><td>95.83</td><td>Shut-In(1)</td></tr> <tr><td>90</td><td>637.18</td><td>97.68</td><td>End Shut-In(1)</td></tr> <tr><td>91</td><td>22.13</td><td>97.67</td><td>Open To Flow (2)</td></tr> <tr><td>141</td><td>31.78</td><td>99.63</td><td>Shut-In(2)</td></tr> <tr><td>182</td><td>372.19</td><td>100.72</td><td>End Shut-In(2)</td></tr> <tr><td>183</td><td>1598.08</td><td>101.22</td><td>Final Hydro-static</td></tr> </tbody> </table>	Time (Min.)	Pressure (psig)	Temp (deg F)	Annotation	0	1621.97	93.49	Initial Hydro-static	1	12.39	92.95	Open To Flow (1)	46	20.01	95.83	Shut-In(1)	90	637.18	97.68	End Shut-In(1)	91	22.13	97.67	Open To Flow (2)	141	31.78	99.63	Shut-In(2)	182	372.19	100.72	End Shut-In(2)	183	1598.08	101.22	Final Hydro-static	
Time (Min.)	Pressure (psig)	Temp (deg F)	Annotation																																				
0	1621.97	93.49	Initial Hydro-static																																				
1	12.39	92.95	Open To Flow (1)																																				
46	20.01	95.83	Shut-In(1)																																				
90	637.18	97.68	End Shut-In(1)																																				
91	22.13	97.67	Open To Flow (2)																																				
141	31.78	99.63	Shut-In(2)																																				
182	372.19	100.72	End Shut-In(2)																																				
183	1598.08	101.22	Final Hydro-static																																				
<p><b>Recovery</b></p> <table border="1" style="width:100%; border-collapse: collapse;"> <thead> <tr> <th>Length (ft)</th> <th>Description</th> <th>Volume (bbl)</th> </tr> </thead> <tbody> <tr> <td>55.00</td> <td>HOCWM-50% O-5% W-45% M</td> <td>0.77</td> </tr> <tr><td> </td><td> </td><td> </td></tr> <tr><td> </td><td> </td><td> </td></tr> <tr><td> </td><td> </td><td> </td></tr> <tr><td> </td><td> </td><td> </td></tr> </tbody> </table> <p><small>* Recovery from multiple tests</small></p>		Length (ft)	Description	Volume (bbl)	55.00	HOCWM-50% O-5% W-45% M	0.77													<p><b>Gas Rates</b></p> <table border="1" style="width:100%; border-collapse: collapse;"> <thead> <tr> <th>Choke (inches)</th> <th>Pressure (psig)</th> <th>Gas Rate (Mcf/d)</th> </tr> </thead> <tbody> <tr><td> </td><td> </td><td> </td></tr> <tr><td> </td><td> </td><td> </td></tr> <tr><td> </td><td> </td><td> </td></tr> </tbody> </table>		Choke (inches)	Pressure (psig)	Gas Rate (Mcf/d)															
Length (ft)	Description	Volume (bbl)																																					
55.00	HOCWM-50% O-5% W-45% M	0.77																																					
Choke (inches)	Pressure (psig)	Gas Rate (Mcf/d)																																					

**DST # 3 STRADDLE TEST 3460' TO 3475' "I" LKC BOTTOM PACKER HELD**

 <p><b>TRILOBITE TESTING, INC.</b></p>	<p><b>DRILL STEM TEST REPORT</b></p>		
---	--------------------------------------	--	--



**TRILLOBITE TESTING, INC.**

TDI, Inc.  
1310 Bison Road  
Hays, KS. 67601  
ATTN: Herb Deines

14-15s-19w-Ellis

GR #2

Job Ticket: 52230

DST#: 3

Test Start: 2013.04.26 @ 05:53:13

**GENERAL INFORMATION:**

Formation: I  
Deviated: No Whipstock: 0.00 ft (KB)  
Time Tool Opened: 08:17:43  
Time Test Ended: 13:34:58

Test Type: Conventional Straddle (Reset)  
Tester: Jason McLemore  
Unit No: 54

Interval: 3460.00 ft (KB) To 3475.00 ft (KB) (TVD)  
Total Depth: 3751.00 ft (KB) (TVD)  
Hole Diameter: 7.80 inches Hole Condition: Good

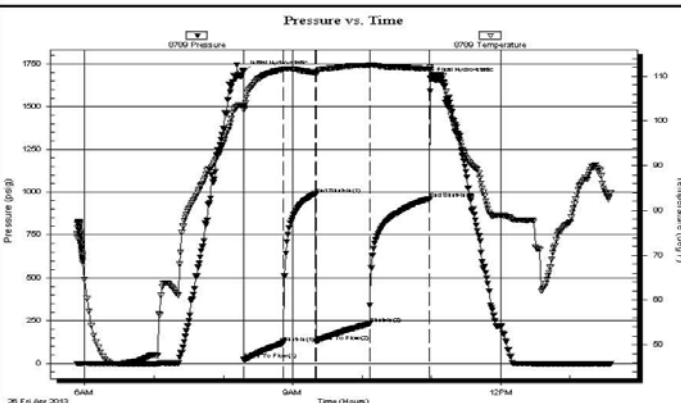
Reference Elevations: 2023.00 ft (KB)  
2013.00 ft (CF)  
KB to GR/CF: 10.00 ft

**Serial #: 8789 Inside**

Press@RunDepth: 231.63 psig @ 3471.00 ft (KB)  
Start Date: 2013.04.26 End Date: 2013.04.26  
Start Time: 05:53:15 End Time: 13:34:58

Capacity: 8000.00 psig  
Last Calib.: 2013.04.26  
Time On Btm: 2013.04.26 @ 08:17:13  
Time Off Btm: 2013.04.26 @ 10:59:13

TEST COMMENT: IFF-Good Blow, BOB in 25 Min.  
ISI-Surface Blow back for 10 Min.  
FFP-Fair Blow, Built to 8-1/4"  
FSI-Dead



**PRESSURE SUMMARY**

Time (Min.)	Pressure (psig)	Temp (deg F)	Annotation
0	1704.95	103.46	Initial Hydro-static
1	23.10	102.48	Open To Flow (1)
35	119.89	111.49	Shut-In(1)
63	989.50	110.80	End Shut-In(1)
63	128.67	110.32	Open To Flow (2)
110	231.63	112.45	Shut-In(2)
162	962.23	111.61	End Shut-In(2)
162	1664.38	111.65	Final Hydro-static

**Recovery**

Length (ft)	Description	Volume (bbl)
450.00	Muddy Water-95%W-5%M	6.31

**Gas Rates**

	Choke (inches)	Pressure (psig)	Gas Rate (Mcf/d)

\* Recovery from multiple tests

Trilobite Testing, Inc

Ref. No: 52230

Printed: 2013.04.26 @ 14:03:24

**ROCK TYPES**

Cht vari	Lmst fw<7	shale, gry	Ss	CglSandy
Clystgy	Lmst fw>7	Carbon Sh	Dol Lime	
Dolprim	shale, grn	shale, red	Lscong1	

**ACCESSORIES**

**MINERAL**

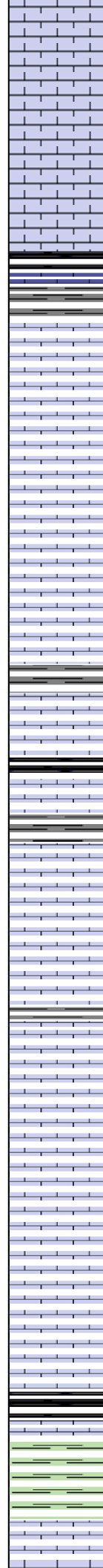
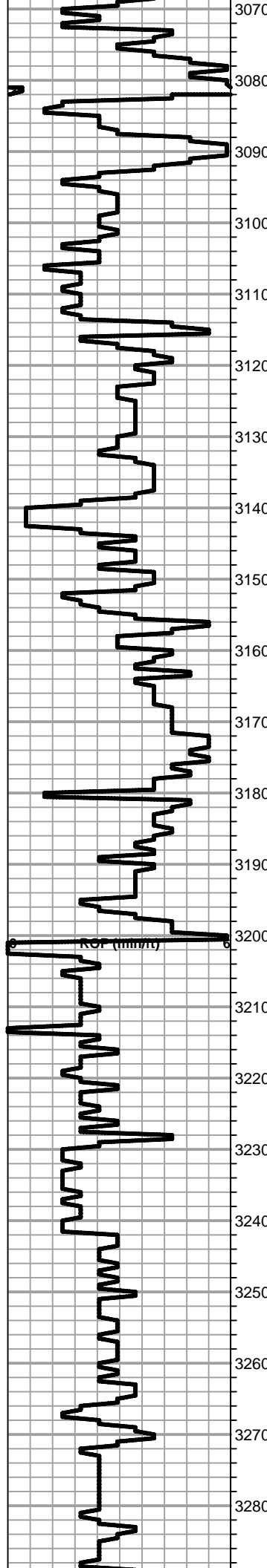
- ru Glauconite
- P Pyrite
- Sandy
- Varicolored chert

**FOSSIL**

- o Oolite
- o Oomoldic

**OTHER SYMBOLS**

Curve Track #1 ROP (min/ft)	Depth   Intervals Cored Interval DST Interval	DST Lithology	Oil Show Geological Descriptions	TG, C1 - C5 1:240 Imperial
	<p>2900</p> <p>2910</p> <p>2920</p> <p>2930</p> <p>2940</p> <p>2950</p> <p>2960</p> <p>2970</p> <p>2980</p> <p>2990</p> <p>3000</p> <p>3010</p> <p>3020</p> <p>3030</p> <p>3040</p> <p>3050</p> <p>3060</p>	<p>P 2</p>	<p>BEGIN 1' DRILL TIME FROM 2900' TO RTD BEGIN 10' WET AND DRY SAMPLES FROM 2950' TO RTD</p> <p><b>ANHYDRITE TOP 1221+798</b> <b>ANHYDRITE BASE 1253+766</b></p> <p>Shale, lt-med gray, soft blocky</p> <p>Lime, lt-med brn, fnxln, slightly fossiliferous</p> <p>Shale, med gray, soft blocky, calcareous, fossiliferous</p> <p>Lime, lt-med brn, fnxln, slight chalk, slightly fossiliferous, specks of glauconite</p> <p>Lime, dark brn, fnxln, fossiliferous</p> <p>Shale, dove gray soft sticky clumps grading into soft blocky shale</p> <p>Lime, med-dark brn, fnxln, fossiliferous</p> <p>Lime, crm-lt brn, fnxln, slight bedded chalk</p> <p><b><u>TOPEKA 2998-979</u></b></p> <p>Lime, lt-med brn-med grayish brn, fnxln, slightly fossiliferous</p> <p>Lime, lt-med brn, fnxln, slight bedded chalk in part</p> <p>Lime, med brn-med grayish brn, fnxln, slight bedded chalk</p> <p>Lime, med brn-med grayish brn, fnxln, slightly fossiliferous, shaley in part</p> <p>Lime, lt brn, granular, lot of chalk with sticky clumps in part</p> <p>Lime, lt-med brn, fnxln, slight chalk in part, slightly fossiliferous</p> <p>Lime, lt-med brn, fnxln-granular, bedded chalk with sticky clumps in part</p>	<p>8 5/8" SURFACE CASING SET TO 1227.3' W/ 375 SMD, WOC 12 HOURS</p> <p>SLOPE 2 DEGREES @1228'</p>



Lime, lt brn-lt grayish brn, fnxln, fn-vfxln in part, bedded chalk

Lime, lt-med brn, fnxln-granular in part, bedded chalk with sticky clumps in part, fusulinids

Lime, lt-med brn, fnxln-granular, bedded chalk with sticky clumps in part

Lime, lt-med brn, granular, slightly fossiliferous, bed chalk

Shale, black carbonaceous

Shale, lt gray soft forming soft mud

Lime, crm-lt brn, fnxln-granular, slight chalk

Lime, crm, fnxln, bedded chalk, NS

Lime, lt brn, granular, bedded chalk w/ sticky clumps in part

Lime, crm-lt brn, fnxln-granular, bedded chalk w/ sticly clumps in part

Lime, lt-med brn, fnxln-granular, chalky  
Shale, med gray, soft blocky

Lime, lt brn, fnxln

Shale, black carbonaceous, fissile, blocky

Lime, lt brn, fnxln, soft on crush, bedded chalk

Lime, lt brn, fnxln-granular, slight bedded chalk

Lime, lt brn, fnxln-granular

Lime, lt brn, fnxln-granular, slight chalk beds, slightly fossiliferous

Lime, lt brn, fnxln, slight bedded chalk

Lime, lt brn, fnxln, slightly chalky

Lime, lt brn, fnxln

**HEEBNER SPL 3265-1245 ELog 3262-1243**

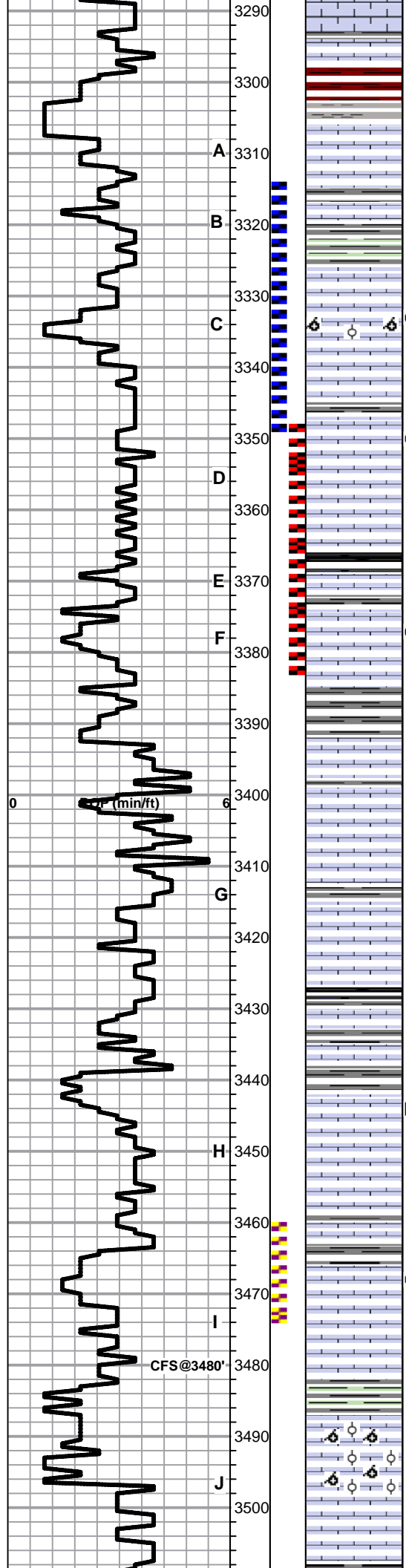
Shale, black carbonaceous, fissile, blocky  
Lime med brn, fn-vfxln, hard on crush

Shale, lime green, soft blocky with soft mud in part

**TORONTO 3282-1263**

Lime, white-crm, fnxln, thin bedded chalk in part, NS

BIT TRIP @ 3200'



Lime, white-cream, fnxln, bedded chalk, NS

Lime, cream-med brown-pale green, fnxln  
Shale, reddish brown wash, soft blocky

**LKC 3306-1287**

Lime, light-med brown, fn-vfxln, slight chalk, NS

Shale, dove gray, soft mud  
Lime, light-med brown, fnxln, NS

DST # 1 33124' TO 3350' SEE  
HEADER FOR TEST  
SUMMARY

Shale, lime green, soft sticky clumps  
Lime, light-med brown, fnxln grading into oolitic/oolmoldic lime, light stain, very light odor

Lime, cream-tan, fnxln, bedded chalk in part

Lime, cream-tan, fnxln, slight chalk  
Shale, light gray, soft sticky clumps

Lime, cream, fnxln, bedded chalk, few chips with light spotty staining, No Odor

DST # 2 3348' TO 3384' SEE  
HEADER FOR TEST SUMMARY

Lime, cream-light brown, fnxln, bedded chalk

Shale, black carbonaceous, fissile, blocky  
Lime, light gray, fnln  
Shale, dove gray, forming soft mud clumps

Lime, cream-light brown, fnxln-granular, interxln porosity, scattered fossil fragments, scattered staining, very light odor, VMSFO

Shale, med gray, soft blocky

Lime, cream-tan, fnxln

Lime, cream, fnxln, bedded chalk, hard on crush

Lime, cream, fnxln, slight bedded chalk, very clean appearance

Lime, cream, fn-vfxln, slight chalk, light gray near shale boundary  
Shale, gray-black carbonaceous in part

Lime, light-med brown, fn-vfxln  
Shale, dove gray, soft mud clumps

Lime, light brown, fnxln-granular, trace dead oil stain, No Odor, bedded chalk, very light Odor

Lime, cream, fnxln, slight chalk

Shale, dove gray, soft mud to soft blocky

DST # 3 STRADDLE TEST  
3450' TO 3475' SEE HEADER  
FOR TEST SUMMARY.  
BOTTOM PACKER HELD

Lime, cream-light brown, fnxln, soft on crush, few chips with trace of spotty staining, No detectable odor

CFS@3480'

Lime, cream, fnxln, bedded chalk

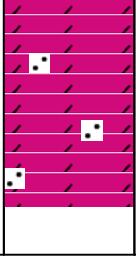
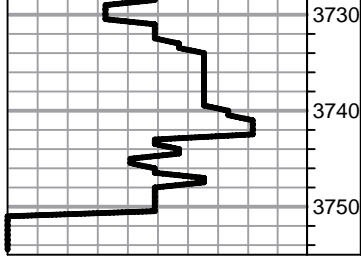
Shale, grayish green, soft blocky

Lime, cream-tan, bedded chalk, oolmoldic, NS, No Odor, No staining noted

Lime, cream-light brown, fnxln, bedded chalk







Dolomite, crm, fnxln, sandy, quartz, granular-fused solid

Dolomite, crm, fnxln, fused quartz in part

**RTD 3750-1731 LTD 3751-1732**

**JOB LOG**

**SWIFT Services, Inc.**

DATE 4-20-13 PAGE NO. 1

CUSTOMER T. D. I. WELL NO. #2 LEASE GR JOB TYPE Surface TICKET NO. 274005

CHART NO.	TIME	RATE (BPM)	VOLUME (BBL) (GAL)	PUMPS		PRESSURE (PSI)		DESCRIPTION OF OPERATION AND MATERIALS
				T	C	TUBING	CASING	
	0630							on Loc. Rig Cir.
	0645							TOH with Bit
								TD 1229' 8 5/8" Csg. 1229'
								Shoe Joint 42'
	0845							short Trip
	11:05							Start in hole with 8 5/8" casing
								Baffle Plate
								Cent. #1, #3, #15
	13:30							csg. on Bottom Circulate
	14:05		20					2000 KCL Flush
	14:10	5.5						mix 100 SK SMD 11.8 #/gal
								100 SK 12.5 #/gal
								100 SK 13.5 #/gal
								75 SK 14.5 #/gal
			140					Finish mixing Release 5-w Top plug
	14:40	.						Displ.
	1500		76				400	Plug down shot in well head
								Cir 50 SK case to Pit
	1520							Rack up truck
								Job Complete

*T. D. I.*

*Roger, Nick, Flint*

**JOB LOG**

**SWIFT Services, Inc.**

DATE 4-26-13 PAGE NO.

CUSTOMER **TOJ** WELL NO. **2** LEASE **6R** JOB TYPE **5 1/2 long string** TICKET NO. **24401**

CHART NO.	TIME	RATE (BPM)	VOLUME (BBL) (GAL)	PUMPS		PRESSURE (PSI)		DESCRIPTION OF OPERATION AND MATERIALS
				T	C	TUBING	CASING	
	1830							On location
								TD 3750 Inset 3709 TP 3746 SJ 37
								Centralizers 1,3,5,7,8,10,12 Baskets 4,14
	1915							Start casing
	2045							Drop Ball Break circulation
	2145		1/4					Plug AH 30 sks MH 15 sks
	2155	5	12		✓		300	Start Mudflush
		5	20		✓		300	Start KLL flush
	2200	5	32		✓		200	Start Cement
	2214							Drop Plug wash out Pump + Lines
	2215							Start Displacement
	2230	6	90.5		✓		650 / 1500	land Plug
	2232							Release Pry
	2245							wash up Back up
	2315							Job Complete Thank You Josh, Brian, Oleg, John