



TRILOBITE TESTING, INC.

DRILL STEM TEST REPORT

Berexco LLC
 2020 North Bramblewood
 Wichita, KS
 67206
 ATTN: Jim Hickman

26 27S 24W Ford
#1-26 SB Unit
 Job Ticket: 50975 **DST#: 2**
 Test Start: 2013.05.09 @ 12:45:00

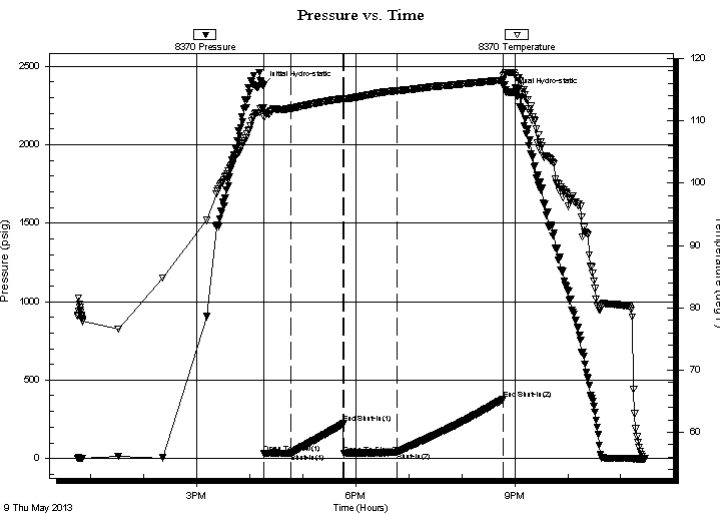
GENERAL INFORMATION:

Formation: **Mississippian**
 Deviated: No Whipstock: ft (KB)
 Time Tool Opened: 16:16:15
 Time Test Ended: 23:27:15
 Interval: **5005.00 ft (KB) To 5048.00 ft (KB) (TVD)**
 Total Depth: 5048.00 ft (KB) (TVD)
 Hole Diameter: 7.88 inches Hole Condition: Poor
 Test Type: Conventional Bottom Hole (Initial)
 Tester: Jimmy Ricketts
 Unit No: 56
 Reference Elevations: 2517.00 ft (KB)
 2504.00 ft (CF)
 KB to GR/CF: 13.00 ft

Serial #: 8370

Press @ Run Depth: 38.10 psig @ ft (KB) Capacity: 8000.00 psig
 Start Date: 2013.05.09 End Date: 2013.05.09 Last Calib.: 1899.12.30
 Start Time: 12:45:05 End Time: 23:27:15 Time On Btm: 2013.05.09 @ 16:14:45
 Time Off Btm: 2013.05.09 @ 20:54:45

TEST COMMENT: Weak blow building to 3 inches initial flow period.
 Weak blow building to strong blow (BOB) 20 minutes into final flow period.



PRESSURE SUMMARY

Time (Min.)	Pressure (psig)	Temp (deg F)	Annotation
0	2377.61	112.10	Initial Hydro-static
2	30.75	110.59	Open To Flow (1)
32	34.09	112.00	Shut-In(1)
91	222.58	113.59	End Shut-In(1)
92	29.41	113.48	Open To Flow (2)
152	38.10	114.83	Shut-In(2)
272	379.04	116.53	End Shut-In(2)
280	2333.98	117.77	Final Hydro-static

Recovery

Length (ft)	Description	Volume (bbl)
285.00	Gas in pipe	1.56
75.00	Oil cut mud 7% oil & 93% mud	1.05

Gas Rates

	Choke (inches)	Pressure (psig)	Gas Rate (Mcf/d)



**TRILOBITE
TESTING, INC.**

DRILL STEM TEST REPORT

FLUID SUMMARY

Berexco LLC
2020 North Bramblewood
Wichita, KS
67206
ATTN: Jim Hickman

26 27S 24W Ford
#1-26 SB Unit
Job Ticket: 50975 **DST#: 2**
Test Start: 2013.05.09 @ 12:45:00

Mud and Cushion Information

Mud Type: Gel Chem	Cushion Type:	Oil API:	deg API
Mud Weight: 9.00 lb/gal	Cushion Length: ft	Water Salinity:	ppm
Viscosity: 48.00 sec/qt	Cushion Volume: bbl		
Water Loss: 8.38 in ³	Gas Cushion Type:		
Resistivity: ohm.m	Gas Cushion Pressure: psig		
Salinity: 5800.00 ppm			
Filter Cake: inches			

Recovery Information

Recovery Table

Length ft	Description	Volume bbl
285.00	Gas in pipe	1.556
75.00	Oil cut mud 7% oil & 93% mud	1.052

Total Length: 360.00 ft Total Volume: 2.608 bbl
 Num Fluid Samples: 0 Num Gas Bombs: 0 Serial #:
 Laboratory Name: Laboratory Location:
 Recovery Comments:

