



**TRILOBITE
TESTING, INC.**

DRILL STEM TEST REPORT

Shakespeare Oil Co, Inc

28 16s 34w Scott, Ks

202 W Main Street
Salem, Il 62881

Nightengale 1-28

Job Ticket: 49152

DST#: 1

ATTN: Tim Priest

Test Start: 2013.03.22 @ 10:29:00

GENERAL INFORMATION:

Formation: **LKC - B**

Deviated: No Whipstock: ft (KB)

Time Tool Opened: 12:44:45

Time Test Ended: 17:13:00

Test Type: Conventional Bottom Hole (Initial)

Tester: Bradley Walter

Unit No: 53

Interval: 4050.00 ft (KB) To 4080.00 ft (KB) (TVD)

Total Depth: 4080.00 ft (KB) (TVD)

Hole Diameter: 7.88 inches Hole Condition: Good

Reference Elevations: 3140.00 ft (KB)

3130.00 ft (CF)

KB to GR/CF: 10.00 ft

Serial #: 8522 Outside

Press @ Run Depth: 325.50 psig @ 4051.00 ft (KB)

Start Date: 2013.03.22

End Date:

2013.03.22

Start Time: 10:29:05

End Time:

17:12:59

Capacity: 8000.00 psig

Last Calib.: 2013.03.22

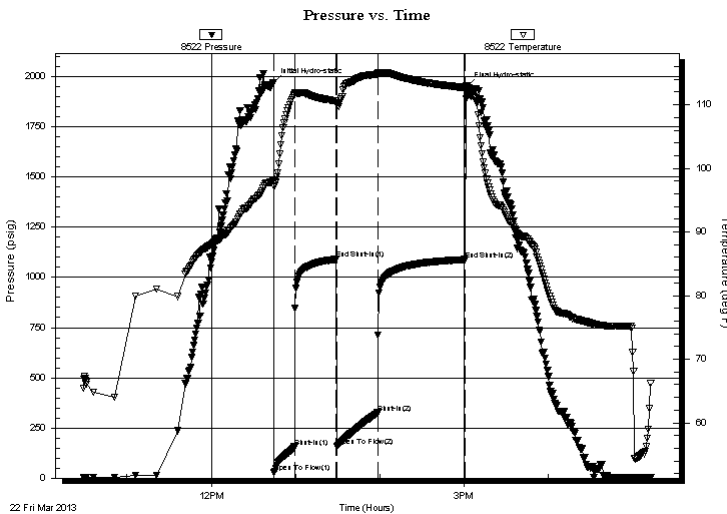
Time On Btm: 2013.03.22 @ 12:44:30

Time Off Btm: 2013.03.22 @ 15:02:15

TEST COMMENT: IF: BOB @ 6 min.
IS: No return.
FF: BOB @ 6 min.
FS: No return.

PRESSURE SUMMARY

Time (Min.)	Pressure (psig)	Temp (deg F)	Annotation
0	1969.74	98.18	Initial Hydro-static
1	29.87	97.20	Open To Flow (1)
15	155.78	111.60	Shut-In(1)
45	1090.73	110.55	End Shut-In(1)
45	157.88	110.16	Open To Flow (2)
74	325.50	114.81	Shut-In(2)
136	1089.18	112.70	End Shut-In(2)
138	1951.05	112.69	Final Hydro-static



Recovery

Length (ft)	Description	Volume (bbl)
680.00	mcw 10m 90w	6.17

Gas Rates

	Choke (inches)	Pressure (psig)	Gas Rate (Mcf/d)



**TRILOBITE
TESTING, INC.**

DRILL STEM TEST REPORT

FLUID SUMMARY

Shakespeare Oil Co, Inc

28 16s 34w Scott, Ks

202 W Main Street
Salem, Il 62881

Nightengale 1-28

Job Ticket: 49152

DST#: 1

ATTN: Tim Priest

Test Start: 2013.03.22 @ 10:29:00

Mud and Cushion Information

Mud Type: Gel Chem

Cushion Type:

Oil API:

0 deg API

Mud Weight: 9.00 lb/gal

Cushion Length:

ft

Water Salinity:

50000 ppm

Viscosity: 54.00 sec/qt

Cushion Volume:

bbbl

Water Loss: 6.40 in³

Gas Cushion Type:

Resistivity: ohm.m

Gas Cushion Pressure:

psig

Salinity: 4000.00 ppm

Filter Cake: 1.00 inches

Recovery Information

Recovery Table

Length ft	Description	Volume bbl
680.00	mcw 10m 90w	6.166

Total Length: 680.00 ft Total Volume: 6.166 bbl

Num Fluid Samples: 0

Num Gas Bombs: 0

Serial #:

Laboratory Name:

Laboratory Location:

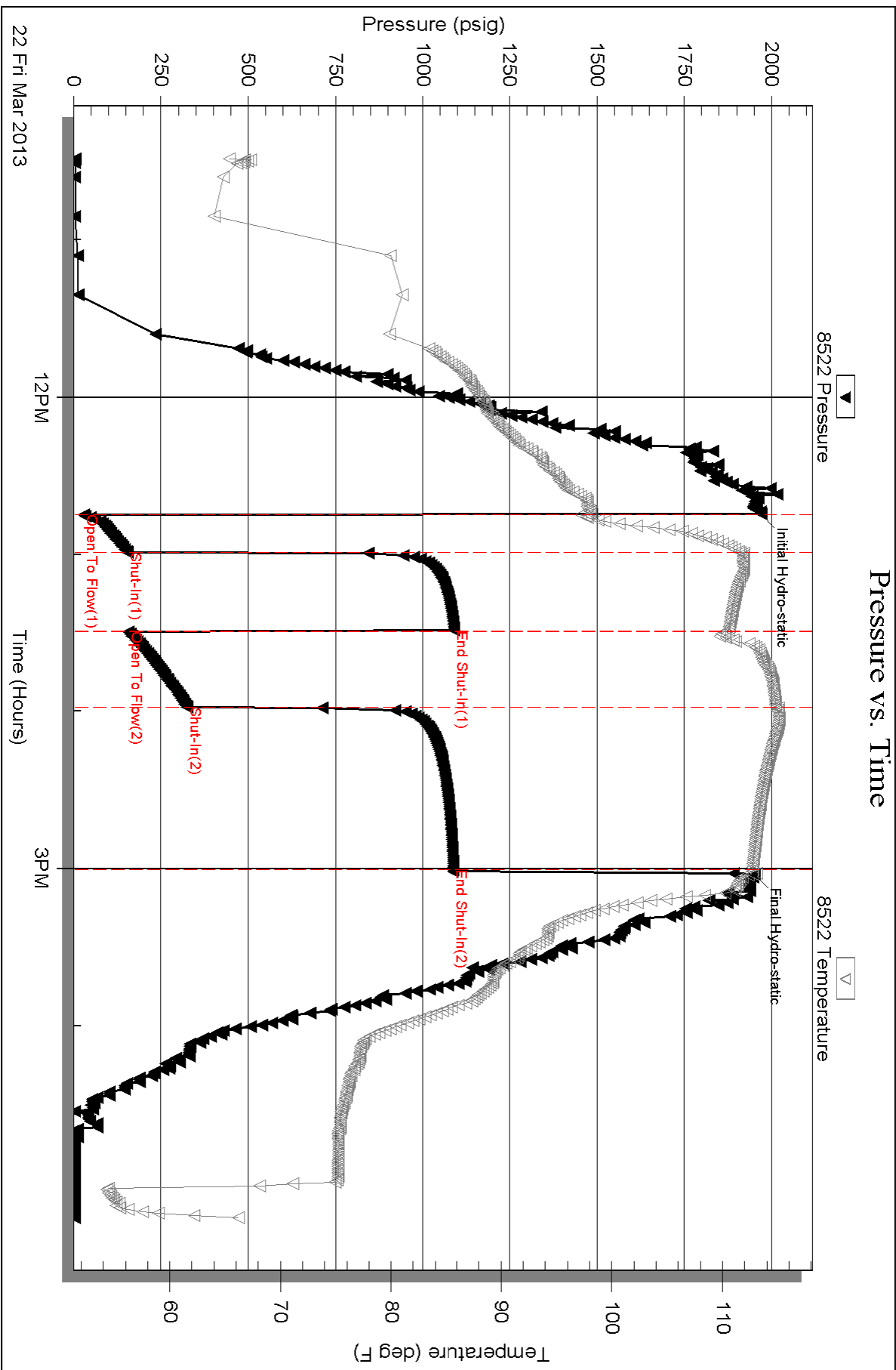
Recovery Comments: rw is .150 @ 71F = 50,000ppm

Serial #: 8522

Outside Shakespeare Oil Co, Inc

Nightengale 1-28

DST Test Number: 1



Triobite Testing, Inc

Ref. No: 49152

Printed: 2013.03.23 @ 00:04:46