



**TRILOBITE TESTING, INC.**

# DRILL STEM TEST REPORT

Shakespear Oil Co, Inc  
 202 W Main Street  
 Salem, IL 62881  
 ATTN: Tim Priest

**28 16s 34w Scott, Ks**  
**Nightengale 1-28**  
 Job Ticket: 49153      **DST#: 2**  
 Test Start: 2013.03.23 @ 05:21:00

## GENERAL INFORMATION:

Formation: **LKC - E&F**  
 Deviated: No      Whipstock:      ft (KB)  
 Time Tool Opened: 07:37:30  
 Time Test Ended: 12:17:30  
 Interval: **4121.00 ft (KB) To 4151.00 ft (KB) (TVD)**  
 Total Depth: 4151.00 ft (KB) (TVD)  
 Hole Diameter: 7.88 inches      Hole Condition: Good  
 Test Type: Conventional Bottom Hole (Reset)  
 Tester: Bradley Walter  
 Unit No: 53  
 Reference Elevations: 3140.00 ft (KB)  
 3130.00 ft (CF)  
 KB to GR/CF: 10.00 ft

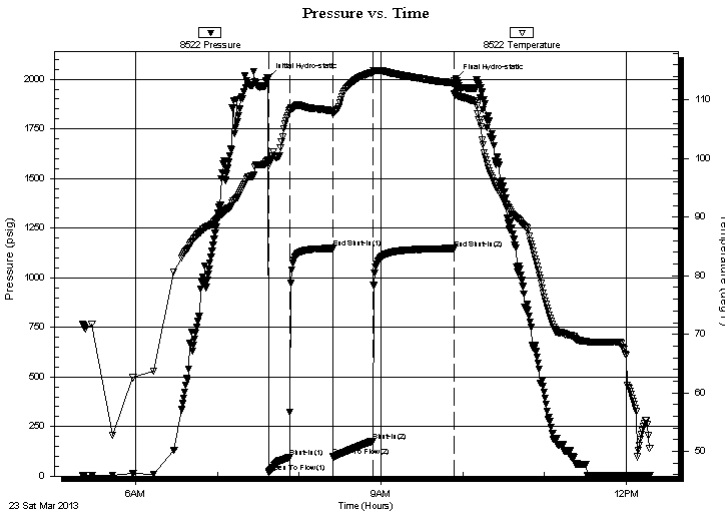
## Serial #: 8522

**Outside**

Press @ RunDepth: 176.67 psig @ 4122.00 ft (KB)      Capacity: 8000.00 psig  
 Start Date: 2013.03.23      End Date: 2013.03.23      Last Calib.: 2013.03.23  
 Start Time: 05:21:05      End Time: 12:17:29      Time On Btm: 2013.03.23 @ 07:37:15  
 Time Off Btm: 2013.03.23 @ 09:55:00

TEST COMMENT: IF: BOB @ 10 min.  
 IS: No return.  
 FF: BOB @ 18 min.  
 FS: No return.

## PRESSURE SUMMARY



Time (Min.)	Pressure (psig)	Temp (deg F)	Annotation
0	2009.70	99.76	Initial Hydro-static
1	20.22	98.79	Open To Flow (1)
16	95.43	108.14	Shut-In(1)
48	1148.20	108.13	End Shut-In(1)
48	97.34	107.58	Open To Flow (2)
77	176.67	114.67	Shut-In(2)
137	1147.52	112.87	End Shut-In(2)
138	2001.80	111.93	Final Hydro-static

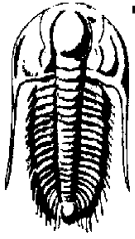
## Recovery

Length (ft)	Description	Volume (bbl)
360.00	mcw 10m 90w (oil spots in tool)	2.98

\* Recovery from multiple tests

## Gas Rates

Choke (inches)	Pressure (psig)	Gas Rate (Mcf/d)



# TRILOBITE TESTING, INC.

## DRILL STEM TEST REPORT

Shakespear Oil Co, Inc  
 202 W Main Street  
 Salem, IL 62881  
 ATTN: Tim Priest

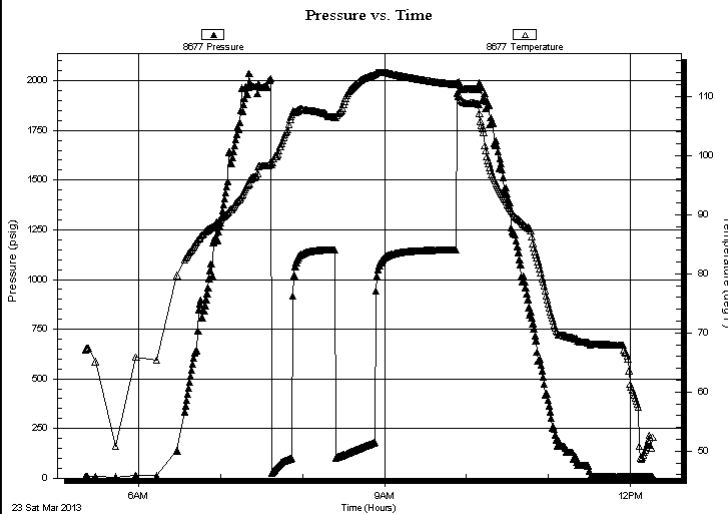
**28 16s 34w Scott, Ks**  
**Nightengale 1-28**  
 Job Ticket: 49153 **DST#: 2**  
 Test Start: 2013.03.23 @ 05:21:00

### GENERAL INFORMATION:

Formation: **LKC - E&F**  
 Deviated: No Whipstock: ft (KB)  
 Time Tool Opened: 07:37:30  
 Time Test Ended: 12:17:30  
 Interval: **4121.00 ft (KB) To 4151.00 ft (KB) (TVD)**  
 Total Depth: 4151.00 ft (KB) (TVD)  
 Hole Diameter: 7.88 inches Hole Condition: Good  
 Test Type: Conventional Bottom Hole (Reset)  
 Tester: Bradley Walter  
 Unit No: 53  
 Reference Elevations: 3140.00 ft (KB)  
 3130.00 ft (CF)  
 KB to GR/CF: 10.00 ft

**Serial #: 8677 Inside**  
 Press @ Run Depth: psig @ 4122.00 ft (KB) Capacity: 8000.00 psig  
 Start Date: 2013.03.23 End Date: 2013.03.23 Last Calib.: 2013.03.23  
 Start Time: 05:21:05 End Time: 12:16:14 Time On Btm:  
 Time Off Btm:

**TEST COMMENT:** IF: BOB @ 10 min.  
 IS: No return.  
 FF: BOB @ 18 min.  
 FS: No return.



### PRESSURE SUMMARY

Time (Min.)	Pressure (psig)	Temp (deg F)	Annotation

### Recovery

Length (ft)	Description	Volume (bbl)
360.00	mcw 10m 90w (oil spots in tool)	2.98

### Gas Rates

Choke (inches)	Pressure (psig)	Gas Rate (Mcf/d)

\* Recovery from multiple tests



**TRILOBITE  
TESTING, INC.**

# DRILL STEM TEST REPORT

**FLUID SUMMARY**

Shakespear Oil Co, Inc

**28 16s 34w Scott, Ks**

202 W Main Street  
Salem, Il 62881

**Nightengale 1-28**

Job Ticket: 49153

**DST#: 2**

ATTN: Tim Priest

Test Start: 2013.03.23 @ 05:21:00

## Mud and Cushion Information

Mud Type: Gel Chem

Cushion Type:

Oil API:

0 deg API

Mud Weight: 9.00 lb/gal

Cushion Length:

ft

Water Salinity:

37000 ppm

Viscosity: 59.00 sec/qt

Cushion Volume:

bbbl

Water Loss: 7.60 in<sup>3</sup>

Gas Cushion Type:

Resistivity: ohm.m

Gas Cushion Pressure:

psig

Salinity: 3500.00 ppm

Filter Cake: 1.00 inches

## Recovery Information

Recovery Table

Length ft	Description	Volume bbl
360.00	mcw 10m 90w (oil spots in tool)	2.983

Total Length: 360.00 ft      Total Volume: 2.983 bbl

Num Fluid Samples: 0

Num Gas Bombs: 0

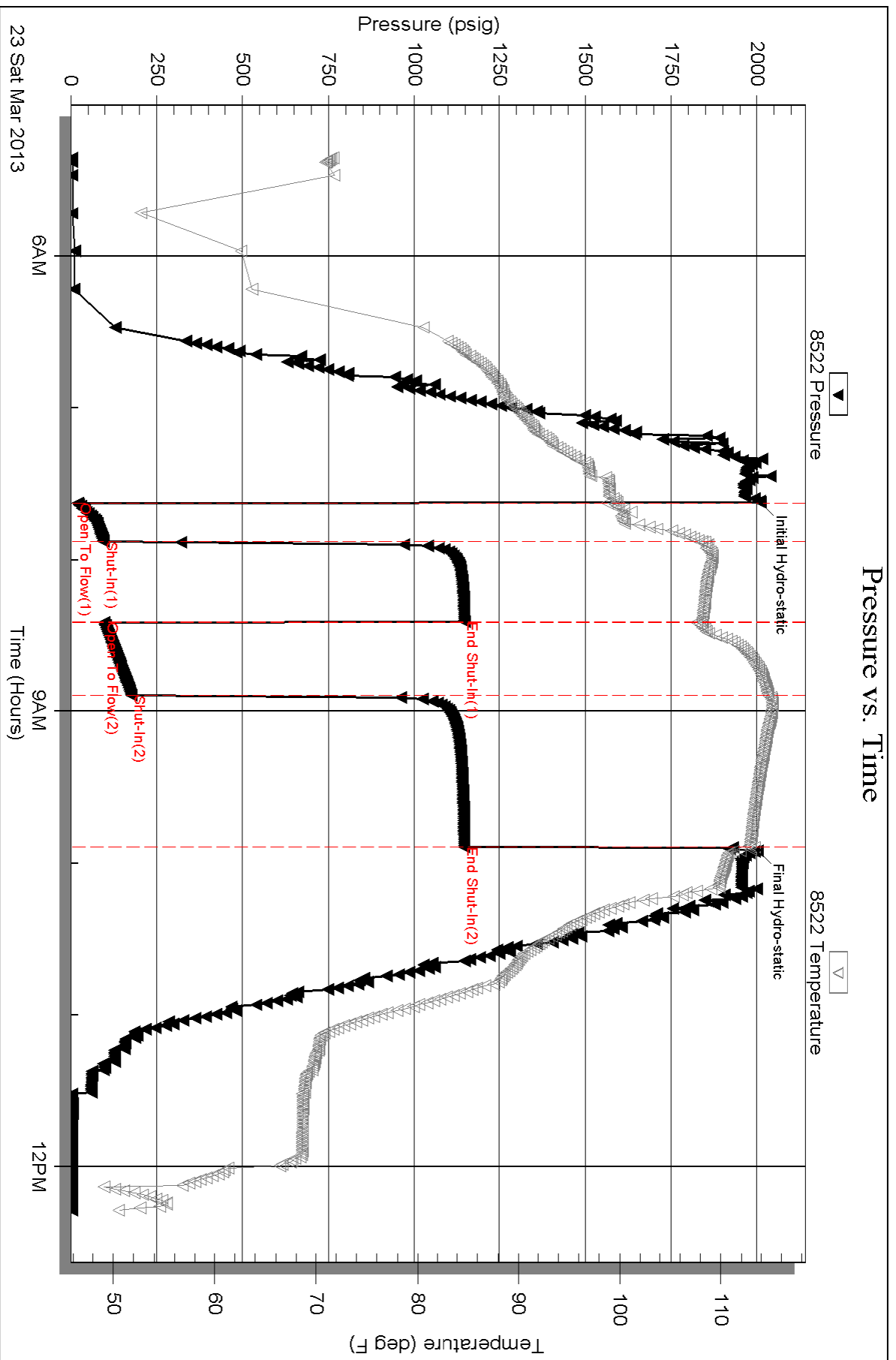
Serial #:

Laboratory Name:

Laboratory Location:

Recovery Comments: rw is .225 @ 61F = 37,000ppm

# Pressure vs. Time



Serial #: 8677

Inside

Shakespeare Oil Co, Inc

Nightengale 1-28

DST Test Number: 2

