



**TRILOBITE  
TESTING, INC.**

# DRILL STEM TEST REPORT

Shakespear Oil Co, Inc

**28 16s 34w Scott, Ks**

202 W Main Street  
Salem, Il 62881

**Nightengale 1-28**

Job Ticket: 49154

**DST#: 3**

ATTN: Tim Priest

Test Start: 2013.03.24 @ 05:00:00

## GENERAL INFORMATION:

Formation: **LKC- H & I**

Deviated: No Whipstock: ft (KB)

Time Tool Opened: 07:07:15

Time Test Ended: 12:29:30

Test Type: Conventional Bottom Hole (Reset)

Tester: Bradley Walter

Unit No: 53

**Interval: 4226.00 ft (KB) To 4280.00 ft (KB) (TVD)**

Reference Elevations: 3140.00 ft (KB)

Total Depth: 4280.00 ft (KB) (TVD)

3130.00 ft (CF)

Hole Diameter: 7.88 inches Hole Condition: Good

KB to GR/CF: 10.00 ft

**Serial #: 8522 Outside**

Press @ Run Depth: 122.14 psig @ 4227.00 ft (KB)

Capacity: 8000.00 psig

Start Date: 2013.03.24

End Date: 2013.03.24

Last Calib.: 2013.03.24

Start Time: 05:00:05

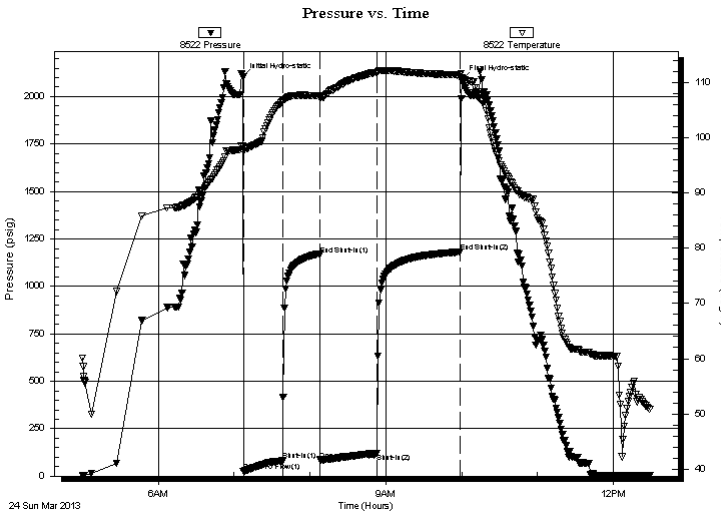
End Time: 12:29:29

Time On Btm: 2013.03.24 @ 07:07:00

Time Off Btm: 2013.03.24 @ 10:00:15

**TEST COMMENT:** IF: 5 1/2" blow .  
IS: No return.  
FF: 8" blow .  
FS: No return.

## PRESSURE SUMMARY



Time (Min.)	Pressure (psig)	Temp (deg F)	Annotation
0	2102.77	98.54	Initial Hydro-static
1	24.59	97.47	Open To Flow (1)
32	81.11	106.58	Shut-In(1)
61	1167.70	107.68	End Shut-In(1)
61	85.32	107.25	Open To Flow (2)
106	122.14	111.87	Shut-In(2)
172	1181.36	111.39	End Shut-In(2)
174	2090.60	110.97	Final Hydro-static

## Recovery

Length (ft)	Description	Volume (bbl)
180.00	mcw 20m 80w	1.19
40.00	ocm 10o 90m	0.40
10.00	oil 100o	0.10

\* Recovery from multiple tests

## Gas Rates

	Choke (inches)	Pressure (psig)	Gas Rate (Mcf/d)



**TRILOBITE  
TESTING, INC.**

# DRILL STEM TEST REPORT

**FLUID SUMMARY**

Shakespear Oil Co, Inc

**28 16s 34w Scott, Ks**

202 W Main Street  
Salem, Il 62881

**Nightengale 1-28**

Job Ticket: 49154

**DST#: 3**

ATTN: Tim Priest

Test Start: 2013.03.24 @ 05:00:00

## Mud and Cushion Information

Mud Type: Gel Chem

Cushion Type:

Oil API:

26 deg API

Mud Weight: 9.00 lb/gal

Cushion Length:

ft

Water Salinity:

36000 ppm

Viscosity: 52.00 sec/qt

Cushion Volume:

bbbl

Water Loss: 10.39 in<sup>3</sup>

Gas Cushion Type:

Resistivity: ohm.m

Gas Cushion Pressure:

psig

Salinity: 5000.00 ppm

Filter Cake: 1.00 inches

## Recovery Information

Recovery Table

Length ft	Description	Volume bbl
180.00	mcw 20m 80w	1.192
40.00	ocm 10o 90m	0.398
10.00	oil 100o	0.099

Total Length: 230.00 ft      Total Volume: 1.689 bbl

Num Fluid Samples: 0

Num Gas Bombs: 0

Serial #:

Laboratory Name:

Laboratory Location:

Recovery Comments: rw is .290 @ 48F = 36000ppm

### Pressure vs. Time

