



**TRILOBITE
TESTING, INC.**

DRILL STEM TEST REPORT

Shakespeare Oil Co, Inc

28 16s 34w Scott, Ks

202 W Main Street
Salem, Il 62881

Nightengale 1-28

Job Ticket: 49155

DST#: 4

ATTN: Tim Priest

Test Start: 2013.03.24 @ 21:43:00

GENERAL INFORMATION:

Formation: **LKC- J**

Deviated: No Whipstock: ft (KB)

Time Tool Opened: 00:02:45

Time Test Ended: 05:12:15

Test Type: Conventional Bottom Hole (Reset)

Tester: Bradley Walter

Unit No: 53

Interval: 4285.00 ft (KB) To 4310.00 ft (KB) (TVD)

Reference Elevations: 3140.00 ft (KB)

Total Depth: 4310.00 ft (KB) (TVD)

3130.00 ft (CF)

Hole Diameter: 7.88 inches Hole Condition: Good

KB to GR/CF: 10.00 ft

Serial #: 8522 Outside

Press @ RunDepth: 148.81 psig @ 4286.00 ft (KB)

Capacity: 8000.00 psig

Start Date: 2013.03.24

End Date:

2013.03.25

Last Calib.: 2013.03.25

Start Time: 21:43:05

End Time:

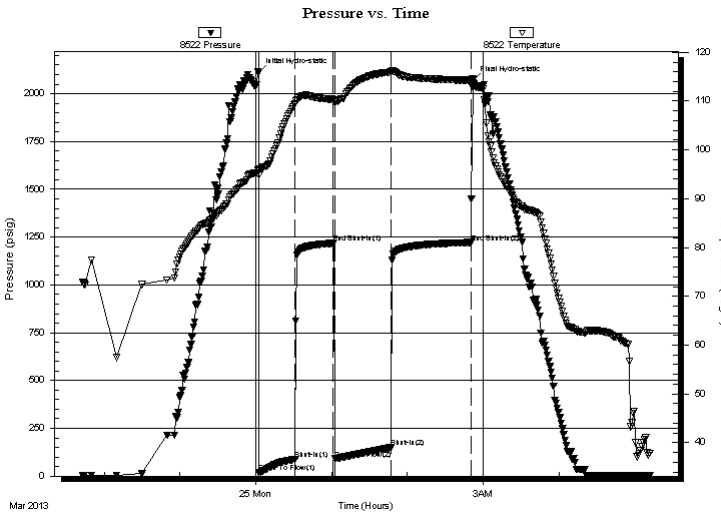
05:12:14

Time On Btm: 2013.03.25 @ 00:02:30

Time Off Btm: 2013.03.25 @ 02:52:00

TEST COMMENT: IF: 8" blow.
IS: No return.
FF: BOB @ 40 min.
FS: No return.

PRESSURE SUMMARY



Time (Min.)	Pressure (psig)	Temp (deg F)	Annotation
0	2109.84	96.12	Initial Hydro-static
1	19.06	94.95	Open To Flow (1)
29	88.94	109.51	Shut-In(1)
59	1218.55	110.36	End Shut-In(1)
60	90.07	109.77	Open To Flow (2)
105	148.81	116.00	Shut-In(2)
168	1222.27	114.27	End Shut-In(2)
170	2069.92	113.77	Final Hydro-static

Recovery

Length (ft)	Description	Volume (bbl)
280.00	mcw 10m 90w (oil spots)	2.19

* Recovery from multiple tests

Gas Rates

	Choke (inches)	Pressure (psig)	Gas Rate (Mcf/d)



**TRILOBITE
TESTING, INC.**

DRILL STEM TEST REPORT

FLUID SUMMARY

Shakespeare Oil Co, Inc

28 16s 34w Scott, Ks

202 W Main Street
Salem, Il 62881

Nightengale 1-28

Job Ticket: 49155

DST#: 4

ATTN: Tim Priest

Test Start: 2013.03.24 @ 21:43:00

Mud and Cushion Information

Mud Type: Gel Chem

Cushion Type:

Oil API:

0 deg API

Mud Weight: 9.00 lb/gal

Cushion Length:

ft

Water Salinity:

40000 ppm

Viscosity: 57.00 sec/qt

Cushion Volume:

bbbl

Water Loss: 10.39 in³

Gas Cushion Type:

Resistivity: ohm.m

Gas Cushion Pressure:

psig

Salinity: 5000.00 ppm

Filter Cake: 1.00 inches

Recovery Information

Recovery Table

Length ft	Description	Volume bbl
280.00	mcw 10m 90w (oil spots)	2.187

Total Length: 280.00 ft Total Volume: 2.187 bbl

Num Fluid Samples: 0

Num Gas Bombs: 0

Serial #:

Laboratory Name:

Laboratory Location:

Recovery Comments: rw is .360 @ 35F = 40,000ppm

Pressure vs. Time

