



**TRILOBITE
TESTING, INC.**

DRILL STEM TEST REPORT

Shakespeare Oil Co, Inc

28 16s 34w Scott, Ks

202 W Main Street
Salem, Il 62881

Nightengale 1-28

Job Ticket: 49157

DST#: 6

ATTN: Tim Priest

Test Start: 2013.03.27 @ 01:36:00

GENERAL INFORMATION:

Formation: **Marmaton- A**

Deviated: No Whipstock: ft (KB)

Time Tool Opened: 03:44:30

Time Test Ended: 09:32:30

Test Type: Conventional Bottom Hole (Reset)

Tester: Bradley Walter

Unit No: 53

Interval: 4416.00 ft (KB) To 4465.00 ft (KB) (TVD)

Reference Elevations: 3140.00 ft (KB)

Total Depth: 4465.00 ft (KB) (TVD)

3130.00 ft (CF)

Hole Diameter: 7.88 inches Hole Condition: Good

KB to GR/CF: 10.00 ft

Serial #: 8522 Outside

Press @ Run Depth: 32.00 psig @ 4417.00 ft (KB)

Capacity: 8000.00 psig

Start Date: 2013.03.27

End Date:

2013.03.27

Last Calib.:

2013.03.27

Start Time: 01:36:05

End Time:

09:32:29

Time On Btm:

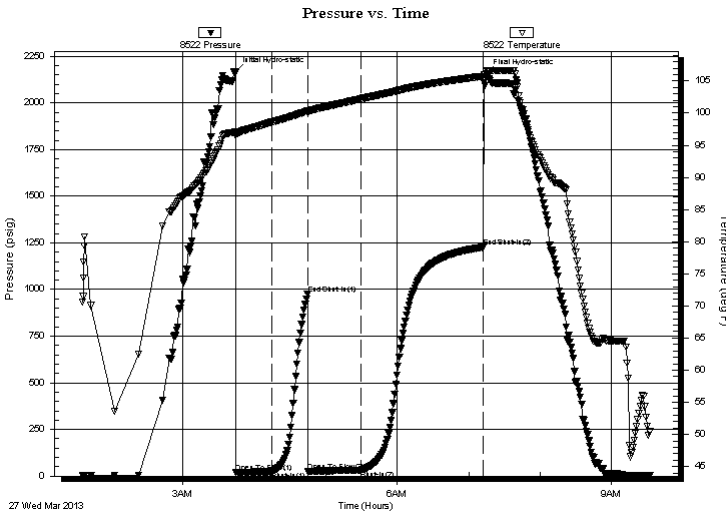
2013.03.27 @ 03:44:15

Time Off Btm:

2013.03.27 @ 07:14:45

TEST COMMENT: IF: 1/2" blow.
IS: No return.
FF: 1" blow.
FS: No return.

PRESSURE SUMMARY



Time (Min.)	Pressure (psig)	Temp (deg F)	Annotation
0	2165.58	97.04	Initial Hydro-static
1	19.28	96.53	Open To Flow (1)
31	24.27	98.57	Shut-In(1)
61	976.90	100.29	End Shut-In(1)
61	26.61	100.07	Open To Flow (2)
106	32.00	102.21	Shut-In(2)
208	1226.48	105.73	End Shut-In(2)
211	2157.71	106.37	Final Hydro-static

Recovery

Length (ft)	Description	Volume (bbl)
10.00	ocm 15o 85m	0.05
15.00	oil 100o	0.07

Gas Rates

	Choke (inches)	Pressure (psig)	Gas Rate (Mcf/d)

* Recovery from multiple tests



**TRILOBITE
TESTING, INC.**

DRILL STEM TEST REPORT

FLUID SUMMARY

Shakespeare Oil Co, Inc

28 16s 34w Scott, Ks

202 W Main Street
Salem, Il 62881

Nightengale 1-28

Job Ticket: 49157

DST#: 6

ATTN: Tim Priest

Test Start: 2013.03.27 @ 01:36:00

Mud and Cushion Information

Mud Type: Gel Chem

Cushion Type:

Oil API:

30 deg API

Mud Weight: 9.00 lb/gal

Cushion Length:

ft

Water Salinity:

0 ppm

Viscosity: 49.00 sec/qt

Cushion Volume:

bbbl

Water Loss: 6.40 in³

Gas Cushion Type:

Resistivity: ohm.m

Gas Cushion Pressure:

psig

Salinity: 4000.00 ppm

Filter Cake: 1.00 inches

Recovery Information

Recovery Table

Length ft	Description	Volume bbbl
10.00	ocm 15o 85m	0.049
15.00	oil 100o	0.074

Total Length: 25.00 ft Total Volume: 0.123 bbl

Num Fluid Samples: 0

Num Gas Bombs: 0

Serial #:

Laboratory Name:

Laboratory Location:

Recovery Comments:

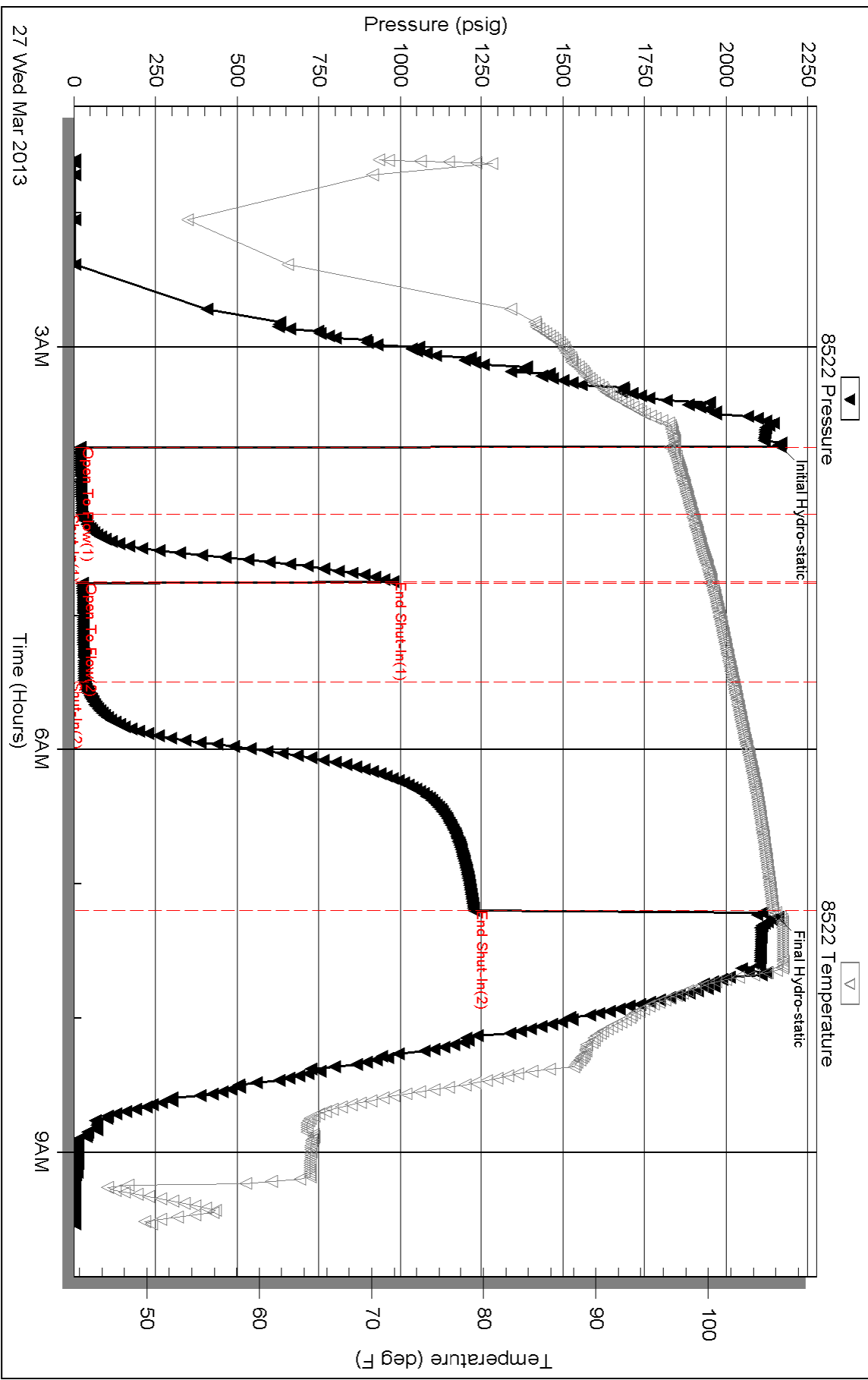
Serial #: 8522

Outside Shakespeare Oil Co, Inc

Nightengale 1-28

DST Test Number: 6

Pressure vs. Time



Triobite Testing, Inc

Ref. No: 49157

Printed: 2013.03.27 @ 10:58:08