



**TRILOBITE  
TESTING, INC.**

# DRILL STEM TEST REPORT

Shakespeare Oil Co, Inc

**28 16s 34w Scott, Ks**

202 W Main Street  
Salem, Il 62881

**Nightengale 1-28**

Job Ticket: 49158

**DST#: 7**

ATTN: Tim Priest

Test Start: 2013.03.27 @ 20:12:30

## GENERAL INFORMATION:

Formation: **Marmaton B**

Deviated: No Whipstock: ft (KB)

Time Tool Opened: 22:21:00

Time Test Ended: 03:27:30

Test Type: Conventional Bottom Hole (Reset)

Tester: Bradley Walter

Unit No: 53

**Interval: 4468.00 ft (KB) To 4492.00 ft (KB) (TVD)**

Reference Elevations: 3140.00 ft (KB)

Total Depth: 4492.00 ft (KB) (TVD)

3130.00 ft (CF)

Hole Diameter: 7.88 inches Hole Condition: Good

KB to GR/CF: 10.00 ft

**Serial #: 8522 Outside**

Press @ Run Depth: 96.76 psig @ 4469.00 ft (KB)

Capacity: 8000.00 psig

Start Date: 2013.03.27

End Date:

2013.03.28

Last Calib.:

2013.03.28

Start Time: 20:12:35

End Time:

03:27:29

Time On Btm:

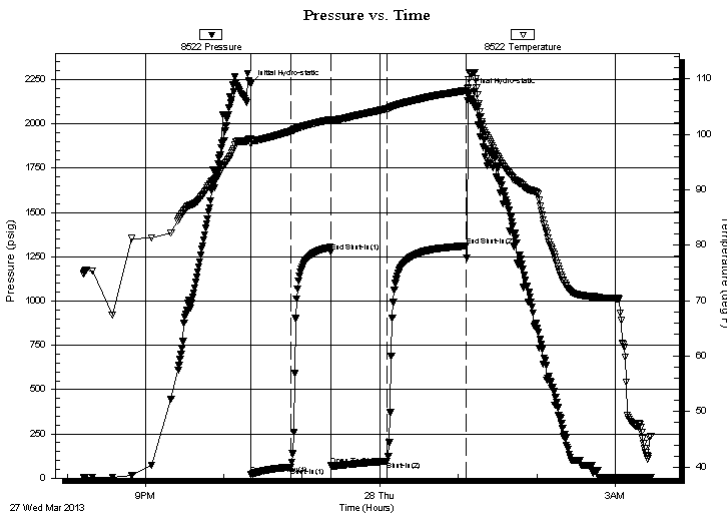
2013.03.27 @ 22:20:45

Time Off Btm:

2013.03.28 @ 01:07:30

**TEST COMMENT:** IF: BOB @ 22 min.  
IS: 1" Blow.  
FF: BOB @ 18 min.  
FS: No return.

## PRESSURE SUMMARY



Time (Min.)	Pressure (psig)	Temp (deg F)	Annotation
0	2225.03	99.25	Initial Hydro-static
1	21.94	98.32	Open To Flow (1)
31	62.79	100.57	Shut-In(1)
61	1275.94	102.62	End Shut-In(1)
62	70.92	102.23	Open To Flow (2)
105	96.76	104.61	Shut-In(2)
165	1311.38	107.87	End Shut-In(2)
167	2177.47	108.31	Final Hydro-static

## Recovery

Length (ft)	Description	Volume (bbl)
60.00	gmco 20g 40m 40o	0.30
120.00	gmco 15g 10m 65o	0.90
20.00	gsmco 15g 5m 80o	0.20
0.00	340' GIP	0.00

\* Recovery from multiple tests

## Gas Rates

	Choke (inches)	Pressure (psig)	Gas Rate (Mcf/d)



**TRILOBITE  
TESTING, INC.**

# DRILL STEM TEST REPORT

**FLUID SUMMARY**

Shakespeare Oil Co, Inc

**28 16s 34w Scott, Ks**

202 W Main Street  
Salem, Il 62881

**Nightengale 1-28**

Job Ticket: 49158

**DST#: 7**

ATTN: Tim Priest

Test Start: 2013.03.27 @ 20:12:30

## Mud and Cushion Information

Mud Type: Gel Chem

Cushion Type:

Oil API:

32 deg API

Mud Weight: 9.00 lb/gal

Cushion Length:

ft

Water Salinity:

0 ppm

Viscosity: 48.00 sec/qt

Cushion Volume:

bbbl

Water Loss: 8.19 in<sup>3</sup>

Gas Cushion Type:

Resistivity: ohm.m

Gas Cushion Pressure:

psig

Salinity: 7000.00 ppm

Filter Cake: 1.00 inches

## Recovery Information

Recovery Table

Length ft	Description	Volume bbbl
60.00	gmco 20g 40m 40o	0.295
120.00	gmco 15g 10m 65o	0.897
20.00	gsmco 15g 5m 80o	0.199
0.00	340' GIP	0.000

Total Length: 200.00 ft

Total Volume: 1.391 bbl

Num Fluid Samples: 0

Num Gas Bombs: 0

Serial #:

Laboratory Name:

Laboratory Location:

Recovery Comments:

Serial #: 8522

Outside Shakespeare Oil Co, Inc

Nightengale 1-28

DST Test Number: 7

