

GEOLOGIST'S REPORT
DRILLING TIME AND SAMPLE LOG

COMPANY **SHAKESPEAR OIL CO.** ELEVATIONS
 LEASE **Nightengale 1-28** KG 3140'
 FIELD **Wildcat** DF _____
 LOCATION **9657 TMSL, 335' FEL** GL 3130'
 SEC **28** T15SP **16S** R0E **34W**
 COUNTY **Scott** STATE **Kansas** Measurements Are All From **KB**
 CONTRACTOR **HD Rig #2**
 SPUD **3-16-13** COMP _____ CASING
 RTD **4875'** LTD **4875'** CONDUCTOR **N/A**
 MUD UP **3600'** TYPE MUD **Chemical** SURFACE **8-5/8" @ 262'**
 SAMPLES SAVED FROM **3800'** to RTD PRODUCTION **4 1/2" @ 4875'**
 DRILLING TIME KEPT FROM **3800'** to RTD
 SAMPLES EXAMINED FROM **3800'** to RTD
 GEOLOGICAL SUPERVISION FROM **3900'** to RTD
 GEOLOGIST ON WELL **Tim Priest** Micro _____
 By: **Weatherford**

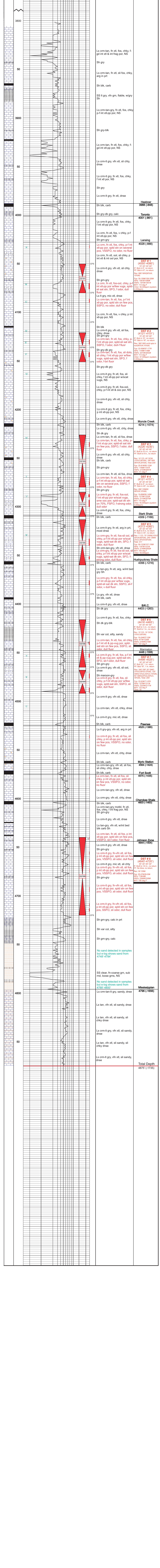
FORMATION TOPS ELECTRIC LOG SAMPLE

Ambyrite	2445 (-695')	3988 (-848')
Heebner Shale	3988 (-846')	4028 (-888')
Amstung	4028 (-888')	4308 (-1169')
SARK	4308 (-1169')	4403 (-1169')
BRC	4400 (-1260')	4574 (-1453')
Fort Scott	4574 (-1453')	4603 (-1461')
Cherokee Shale	4796 (-1656')	4896 (-1656')

REMARKS Due to the results of DSTs it was decided to set production casing to further test the well.

Respectfully Submitted,
 Tim Priest
 Petroleum Geologist

API #15-171-20930-00-00



Final Depth: 4875' (-1735')