



**TRILOBITE  
TESTING, INC.**

# DRILL STEM TEST REPORT

Samuel Gary Jr., & Associates

**24-14s-18w-Ellis**

1515 Wynkoop  
Suite 700  
Denver, CO. 80202  
ATTN: Clayton Camozzi

**Stecklein #1-24**

Job Ticket: 50527

**DST#: 1**

Test Start: 2013.02.03 @ 23:26:02

## GENERAL INFORMATION:

Formation: **Arbuckle**

Deviated: No Whipstock: 0.00 ft (KB)

Time Tool Opened: 02:13:32

Time Test Ended: 07:23:47

Test Type: Conventional Straddle (Initial)

Tester: Jason McLemore

Unit No: 54

**Interval: 3530.00 ft (KB) To 3540.00 ft (KB) (TVD)**

Reference Elevations: 1949.00 ft (KB)

Total Depth: 3653.00 ft (KB) (TVD)

1941.00 ft (CF)

Hole Diameter: 7.80 inches Hole Condition: Good

KB to GR/CF: 8.00 ft

**Serial #: 8789**

**Inside**

Press @ RunDepth: 34.58 psig @ 3531.00 ft (KB)

Capacity: 8000.00 psig

Start Date: 2013.02.03

End Date:

2013.02.04

Last Calib.:

2013.02.04

Start Time: 23:26:04

End Time:

07:23:47

Time On Btm:

2013.02.04 @ 02:13:02

Time Off Btm:

2013.02.04 @ 04:42:47

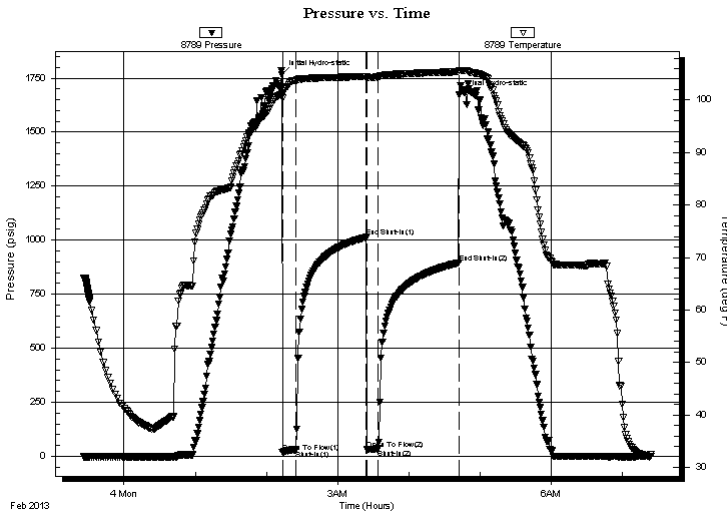
TEST COMMENT: IFP-Weak Blow , Built to 1/2"

ISI-Dead

FP-Weak Blow ,Built to 1/4"

FSI-Dead

## PRESSURE SUMMARY



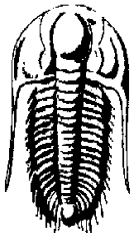
| Time (Min.) | Pressure (psig) | Temp (deg F) | Annotation           |
|-------------|-----------------|--------------|----------------------|
| 0           | 1765.86         | 101.16       | Initial Hydro-static |
| 1           | 17.99           | 100.36       | Open To Flow (1)     |
| 12          | 29.49           | 103.73       | Shut-In(1)           |
| 72          | 1013.85         | 104.52       | End Shut-In(1)       |
| 72          | 32.63           | 104.13       | Open To Flow (2)     |
| 81          | 34.58           | 104.40       | Shut-In(2)           |
| 149         | 896.11          | 105.39       | End Shut-In(2)       |
| 150         | 1674.44         | 105.60       | Final Hydro-static   |

## Recovery

| Length (ft) | Description         | Volume (bbl) |
|-------------|---------------------|--------------|
| 10.00       | VSOCWM-3%O-5%W-92%M | 0.05         |
| 40.00       | Free Oil            | 0.38         |
|             |                     |              |
|             |                     |              |
|             |                     |              |

## Gas Rates

|  | Choke (inches) | Pressure (psig) | Gas Rate (Mcf/d) |
|--|----------------|-----------------|------------------|
|  |                |                 |                  |



**TRILOBITE TESTING, INC.**

# DRILL STEM TEST REPORT

Samuel Gary Jr., & Associates

**24-14s-18w-Ellis**

1515 Wynkoop  
Suite 700  
Denver, CO. 80202  
ATTN: Clayton Camozzi

**Stecklein #1-24**

Job Ticket: 50527

**DST#: 1**

Test Start: 2013.02.03 @ 23:26:02

## GENERAL INFORMATION:

Formation: **Arbuckle**

Deviated: No Whipstock: 0.00 ft (KB)

Time Tool Opened: 02:13:32

Time Test Ended: 07:23:47

Test Type: Conventional Straddle (Initial)

Tester: Jason McLemore

Unit No: 54

**Interval: 3530.00 ft (KB) To 3540.00 ft (KB) (TVD)**

Reference Elevations: 1949.00 ft (KB)

Total Depth: 3653.00 ft (KB) (TVD)

1941.00 ft (CF)

Hole Diameter: 7.80 inches Hole Condition: Good

KB to GR/CF: 8.00 ft

**Serial #: 6668 Below (Straddle)**

Press @ Run Depth: psig @ 3554.00 ft (KB)

Capacity: 8000.00 psig

Start Date: 2013.02.03

End Date:

2013.02.04

Last Calib.:

2013.02.04

Start Time: 23:22:09

End Time:

07:16:58

Time On Btm:

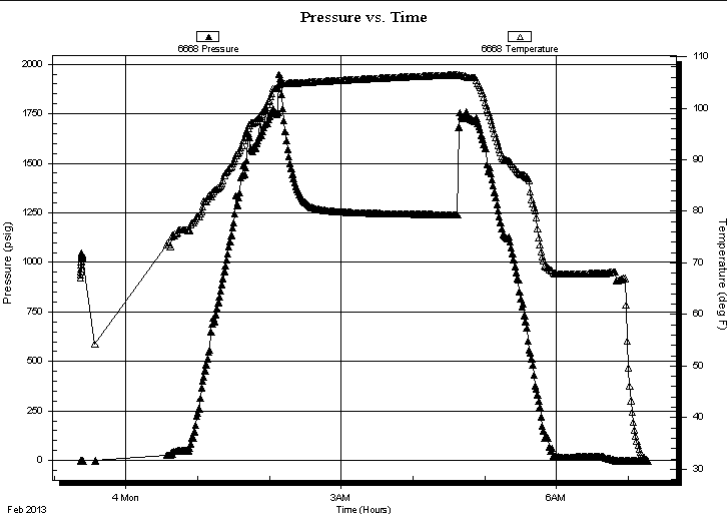
Time Off Btm:

TEST COMMENT: IFP-Weak Blow , Built to 1/2"

ISI-Dead

FP-Weak Blow , Built to 1/4"

FSI-Dead



## PRESSURE SUMMARY

| Time (Min.) | Pressure (psig) | Temp (deg F) | Annotation |
|-------------|-----------------|--------------|------------|
|             |                 |              |            |
|             |                 |              |            |
|             |                 |              |            |
|             |                 |              |            |
|             |                 |              |            |
|             |                 |              |            |
|             |                 |              |            |

## Recovery

| Length (ft) | Description         | Volume (bbl) |
|-------------|---------------------|--------------|
| 10.00       | VSOCWM-3%O-5%W-92%M | 0.05         |
| 40.00       | Free Oil            | 0.38         |
|             |                     |              |
|             |                     |              |
|             |                     |              |

## Gas Rates

|  | Choke (inches) | Pressure (psig) | Gas Rate (Mcf/d) |
|--|----------------|-----------------|------------------|
|  |                |                 |                  |



**TRILOBITE  
TESTING, INC.**

**DRILL STEM TEST REPORT**

Samuel Gary Jr., & Associates

**24-14s-18w-Ellis**

1515 Wynkoop  
Suite 700  
Denver, CO. 80202  
ATTN: Clayton Camozzi

**Stecklein #1-24**

Job Ticket: 50527 **DST#: 1**

Test Start: 2013.02.03 @ 23:26:02

**GENERAL INFORMATION:**

Formation: **Arbuckle**

Deviated: No Whipstock: 0.00 ft (KB)

Time Tool Opened: 02:13:32

Time Test Ended: 07:23:47

Test Type: Conventional Straddle (Initial)

Tester: Jason McLemore

Unit No: 54

**Interval: 3530.00 ft (KB) To 3540.00 ft (KB) (TVD)**

Reference Elevations: 1949.00 ft (KB)

Total Depth: 3653.00 ft (KB) (TVD)

1941.00 ft (CF)

Hole Diameter: 7.80 inches Hole Condition: Good

KB to GR/CF: 8.00 ft

**Serial #: 8736 Fluid**

Press @ Run Depth: psig @ 3496.00 ft (KB)

Capacity: 8000.00 psig

Start Date: 2013.02.03 End Date: 2013.02.04

Last Calib.: 2013.02.04

Start Time: 23:20:59 End Time: 07:18:23

Time On Btm:

Time Off Btm:

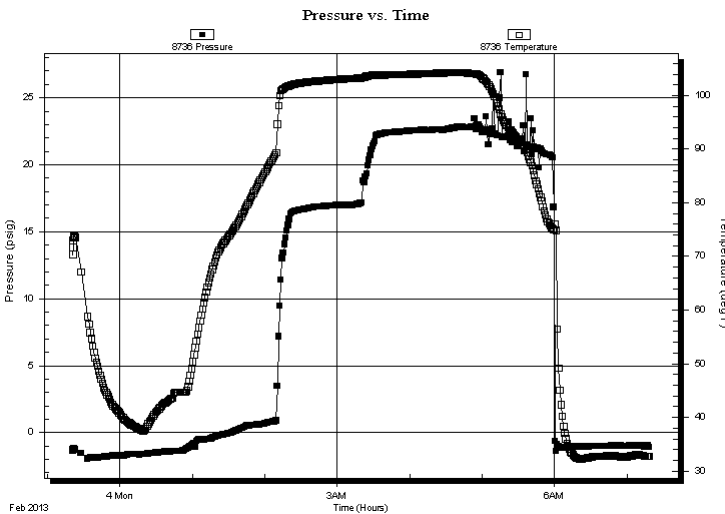
**TEST COMMENT:** IFP-Weak Blow , Built to 1/2"

ISI-Dead

FP-Weak Blow ,Built to 1/4"

FSI-Dead

**PRESSURE SUMMARY**



| Time (Min.) | Pressure (psig) | Temp (deg F) | Annotation |
|-------------|-----------------|--------------|------------|
|             |                 |              |            |
|             |                 |              |            |
|             |                 |              |            |
|             |                 |              |            |
|             |                 |              |            |
|             |                 |              |            |
|             |                 |              |            |
|             |                 |              |            |
|             |                 |              |            |
|             |                 |              |            |

**Recovery**

**Gas Rates**

| Length (ft) | Description         | Volume (bbl) |
|-------------|---------------------|--------------|
| 10.00       | VSOCWM-3%O-5%W-92%M | 0.05         |
| 40.00       | Free Oil            | 0.38         |
|             |                     |              |
|             |                     |              |
|             |                     |              |
|             |                     |              |

|  | Choke (inches) | Pressure (psig) | Gas Rate (Mcf/d) |
|--|----------------|-----------------|------------------|
|  |                |                 |                  |
|  |                |                 |                  |
|  |                |                 |                  |
|  |                |                 |                  |



**TRILOBITE  
TESTING, INC.**

**DRILL STEM TEST REPORT**

**FLUID SUMMARY**

Samuel Gary Jr., & Associates

**24-14s-18w-Ellis**

1515 Wynkoop  
Suite 700  
Denver, CO. 80202  
ATTN: Clayton Camozzi

**Stecklein #1-24**

Job Ticket: 50527

**DST#: 1**

Test Start: 2013.02.03 @ 23:26:02

**Mud and Cushion Information**

|                                  |                            |                           |
|----------------------------------|----------------------------|---------------------------|
| Mud Type: Gel Chem               | Cushion Type:              | Oil API: 23 deg API       |
| Mud Weight: 9.00 lb/gal          | Cushion Length: ft         | Water Salinity: 27000 ppm |
| Viscosity: 49.00 sec/qt          | Cushion Volume: bbl        |                           |
| Water Loss: 7.80 in <sup>3</sup> | Gas Cushion Type:          |                           |
| Resistivity: ohm.m               | Gas Cushion Pressure: psig |                           |
| Salinity: 3000.00 ppm            |                            |                           |
| Filter Cake: inches              |                            |                           |

**Recovery Information**

Recovery Table

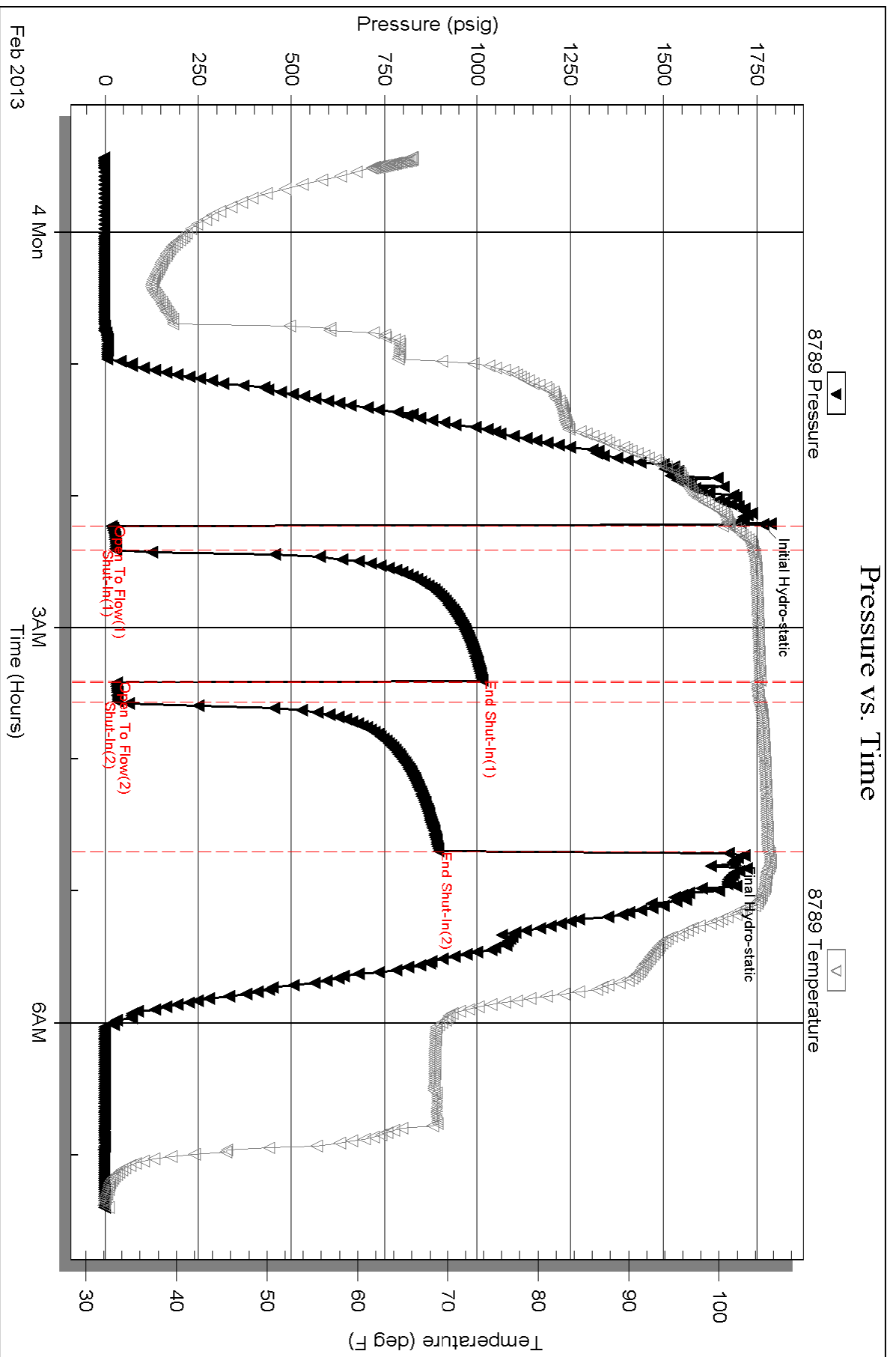
| Length<br>ft | Description         | Volume<br>bbl |
|--------------|---------------------|---------------|
| 10.00        | VSOCWM-3%O-5%W-92%M | 0.049         |
| 40.00        | Free Oil            | 0.379         |

Total Length: 50.00 ft      Total Volume: 0.428 bbl

Num Fluid Samples: 0      Num Gas Bombs: 0      Serial #:

Laboratory Name:      Laboratory Location:

Recovery Comments: Sampler: 125#, 2800ml W, 200ml Oil

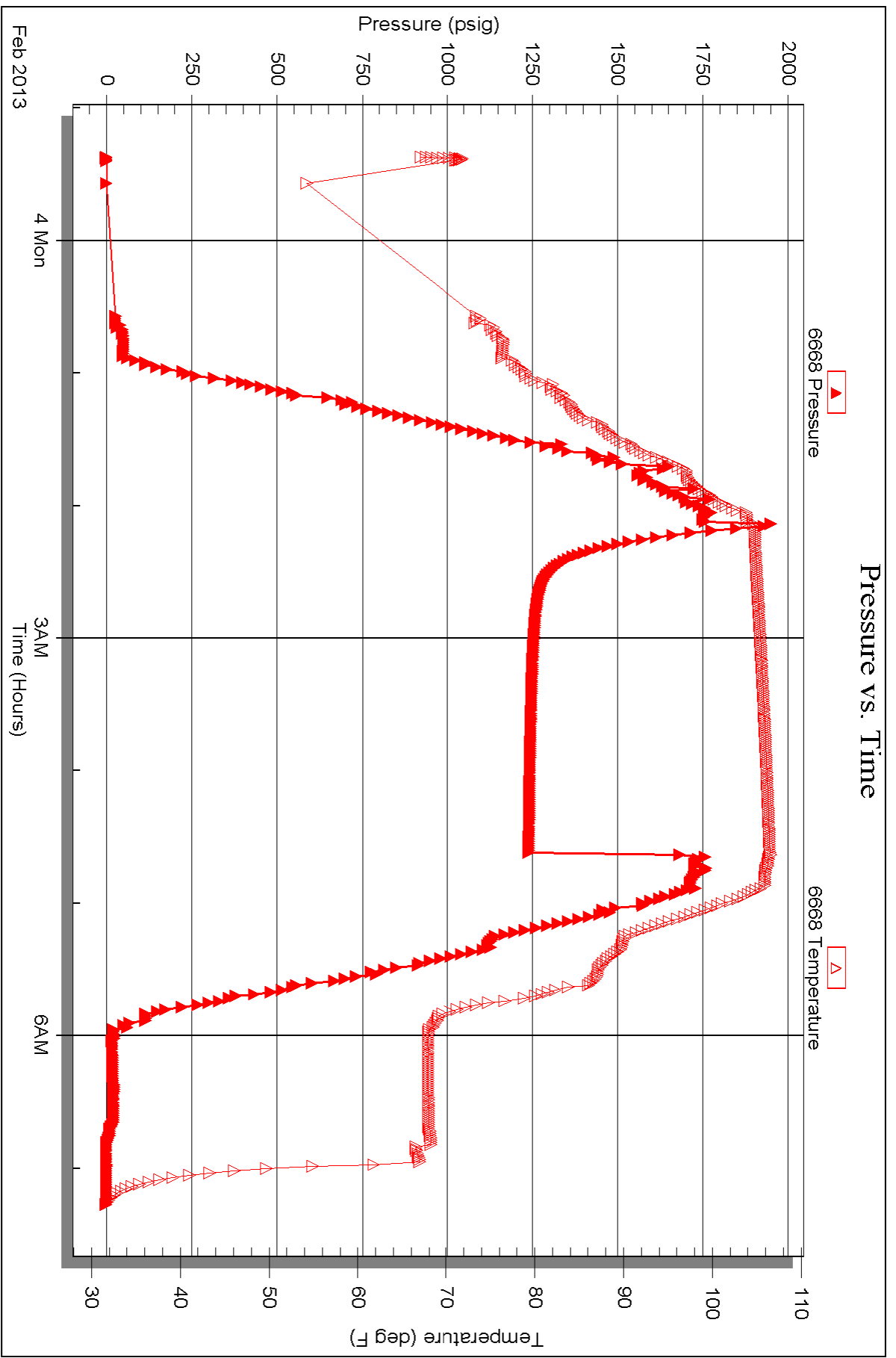


Serial #: 6668

Below (Stratton) Gary Jr., & Associates

Stecklein #1-24

DST Test Number: 1



Serial #: 8736

Fluid

Samuel Gary Jr., & Associates

Secklein #1-24

DST Test Number: 1

