

T23S, R8W, 6th P.M.

SGOMI

Well location, REFFNER 2308 #4-2HS, located as shown in Lot 3 of Section 4, T23S, R8W, 6th P.M., Reno County, Kansas.

BASIS OF ELEVATION

SPOT ELEVATION LOCATED AT THE SW CORNER OF SECTION 18, T23S, R8W, 6th P.M. TAKEN FROM THE ALDEN SE, QUADRANGLE, KANSAS, RENO COUNTY, 7.5 MINUTE QUAD (TOPOGRAPHIC MAP) PUBLISHED BY THE UNITED STATES DEPARTMENT OF THE INTERIOR, GEOLOGICAL SURVEY, SAID ELEVATION IS MARKED AS BEING 1688 FEET.

BASIS OF BEARINGS

BASIS OF BEARINGS IS A G.P.S. OBSERVATION.

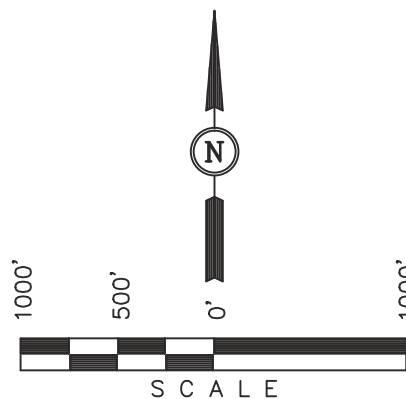
1/2" Rebar
0.5' Below Ground,
In Road
NAD 27 Kansas South
N: 522216.78
E: 2081869.88

Large Spike
0.3' Below Ground
NAD 27 Kansas South
N: 522283.84
E: 2084519.92

5/8" Rebar
0.3' Below Ground,
In Road
NAD 27 Kansas South
N: 522333.50
E: 2087162.09

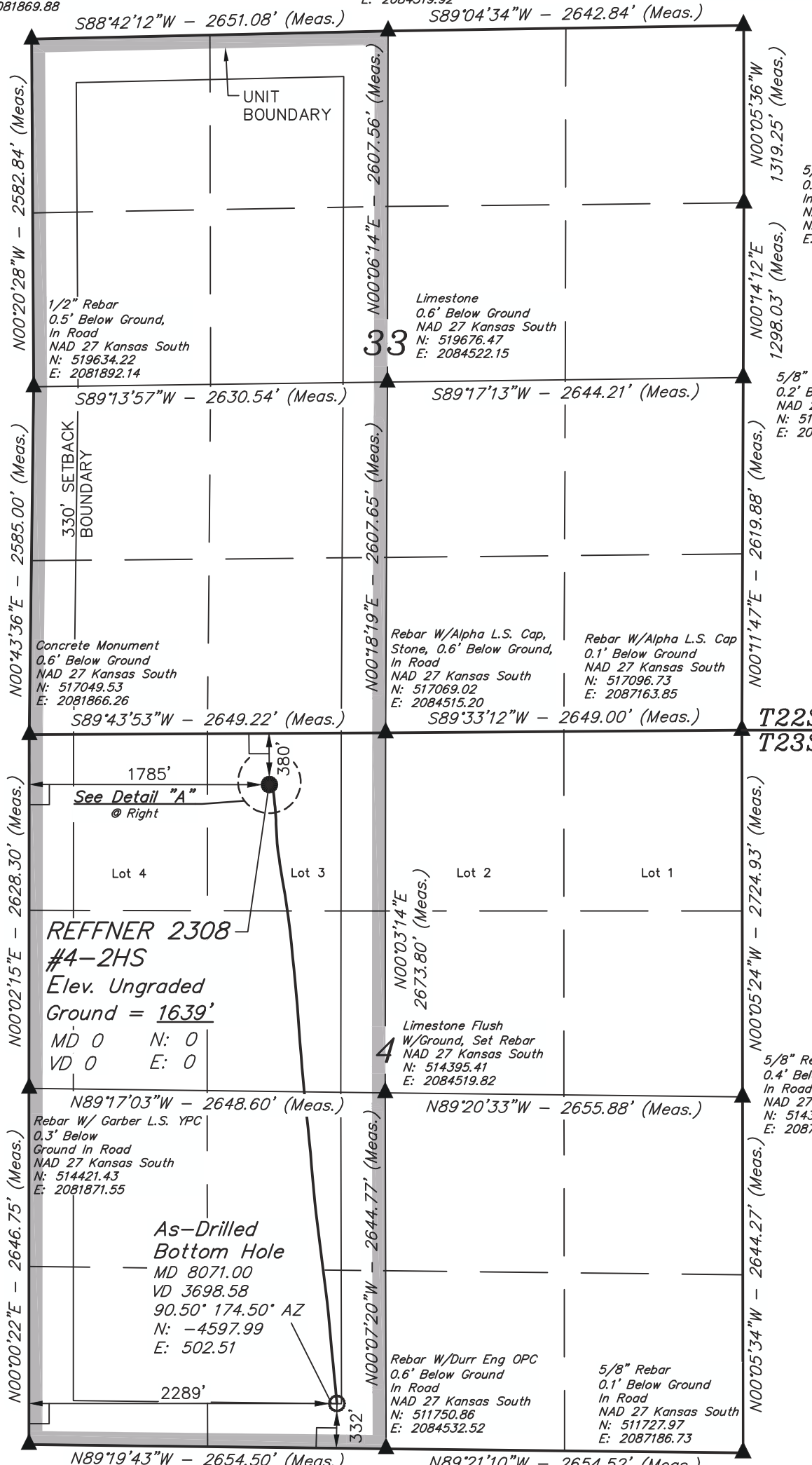
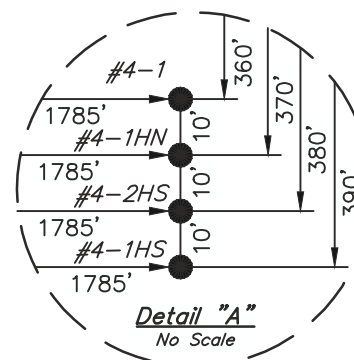
5/8" Rebar
0.5' Below Ground,
In Road
NAD 27 Kansas South
N: 521014.35
E: 2087167.76

5/8" Rebar
0.2' Below Ground
NAD 27 Kansas South
N: 519716.42
E: 2087165.85



LEGEND:

- └─┘ = 90° SYMBOL
- = PROPOSED WELL HEAD.
- ▲ = SECTION CORNERS LOCATED.



1/2" Rebar, Concrete
Marker 0.3' Below
Ground In Road
NAD 27 Kansas South
N: 511774.88
E: 2081878.33

CERTIFICATE

THIS IS TO CERTIFY THAT THE ABOVE PLAT WAS PREPARED FROM FIELD NOTES OF ACTUAL SURVEYS MADE BY ME OR UNDER MY SUPERVISION AND THAT THE SAME ARE TRUE AND CORRECT TO THE BEST OF MY KNOWLEDGE AND BELIEF.

JUSTIN S. ...
REGISTERED LAND SURVEYOR
REGISTRATION NO. 1451
STATE OF KANSAS

UINTAH ENGINEERING & LAND SURVEYING
85 SOUTH 200 EAST - VERNAL, UTAH 84078
(435) 789-1017

NAD 83 (#4-2HS AS DRILLED BOTTOM HOLE) LATITUDE = 38°04'21.72" (38.072700) LONGITUDE = 98°12'28.66" (98.207961)	NAD 83 (#4-2HS SURFACE LOCATION) LATITUDE = 38°05'07.17" (38.085325) LONGITUDE = 98°12'34.92" (98.209700)	SCALE 1" = 1000'	DATE SURVEYED: 11-28-12	DATE DRAWN: 04-25-13
NAD 27 (#4-2HS AS DRILLED BOTTOM HOLE) LATITUDE = 38°04'21.67" (38.072686) LONGITUDE = 98°12'27.44" (98.207622)	NAD 27 (#4-2HS SURFACE LOCATION) LATITUDE = 38°05'07.13" (38.085314) LONGITUDE = 98°12'33.69" (98.209358)	PARTY C.B. D.W. S.F.	REFERENCES G.L.O. PLAT	
STATE PLANE NAD 27 N: 512086.38 E: 2084166.59	STATE PLANE NAD 27 (KANSAS SOUTH) N: 516682.68 E: 2083651.86	WEATHER COOL	FILE SGOMI	