



GEOLOGISTS' REPORT

OPERATOR MURFIN DRILLING COMPANY, INC.

LEASE KRAUS-STECKLEIN UNIT # 1-28

LOCATION 2475 FNL & 1500 FWL

SEC. 28 TWP. 14S RGE. 18W

COUNTY ELLIS STATE KANSAS

FIELD LEONHARDT

CONTRACTOR Murfin Drilling Company

COMMENCED 4 Feb 2013

WLD DISPLACED 2976 MUD TYPE Chemical

DRILLING TIME KEPT FROM 2960 TO 3790

SAMPLES SAVED FROM 2960 TO 3790

SAMPLES EXAMINED FROM 2960 TO 3790

GEOLOGICAL SUPERVISION FROM 3010 TO 3790

GEOLOGIST ON WELL Paul Gunzelman

FORMATION NAME LOG

STONE CORRAL TOP DATUM 1270 +811

Base/Anhydrite TOP DATUM 1314 +767

Topoka TOP DATUM 3063 3065

Heebner Shale TOP DATUM 3322 -1241

Toronto TOP DATUM 3343 -1262

Base/Kansas City TOP DATUM 3371 -1290

Arbuckle TOP DATUM 3687 -1606

Total Depth TOP DATUM 3788 -1707

ELEVATIONS

KB 2081 Ft.

GL 2076 Ft.

ALL MEASUREMENTS FROM K.B.

CASING RECORD

CONDUCTOR None

SURFACE 8 5/8" @ 217

PRODUCTION None

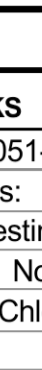
ELECTRICAL SURVES: Pioneer Energy Services

Comp. Neutron Density

Dual Induction

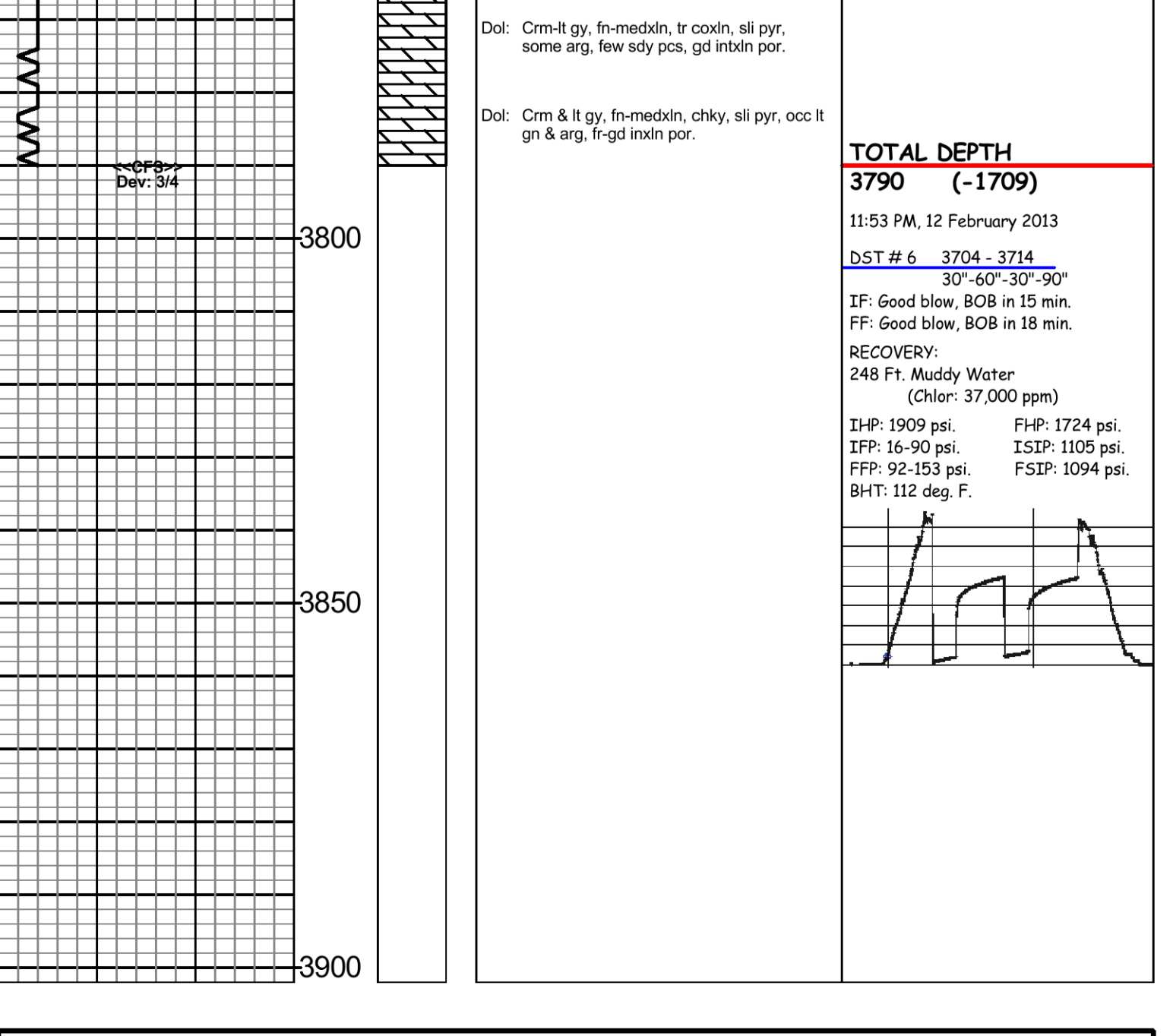
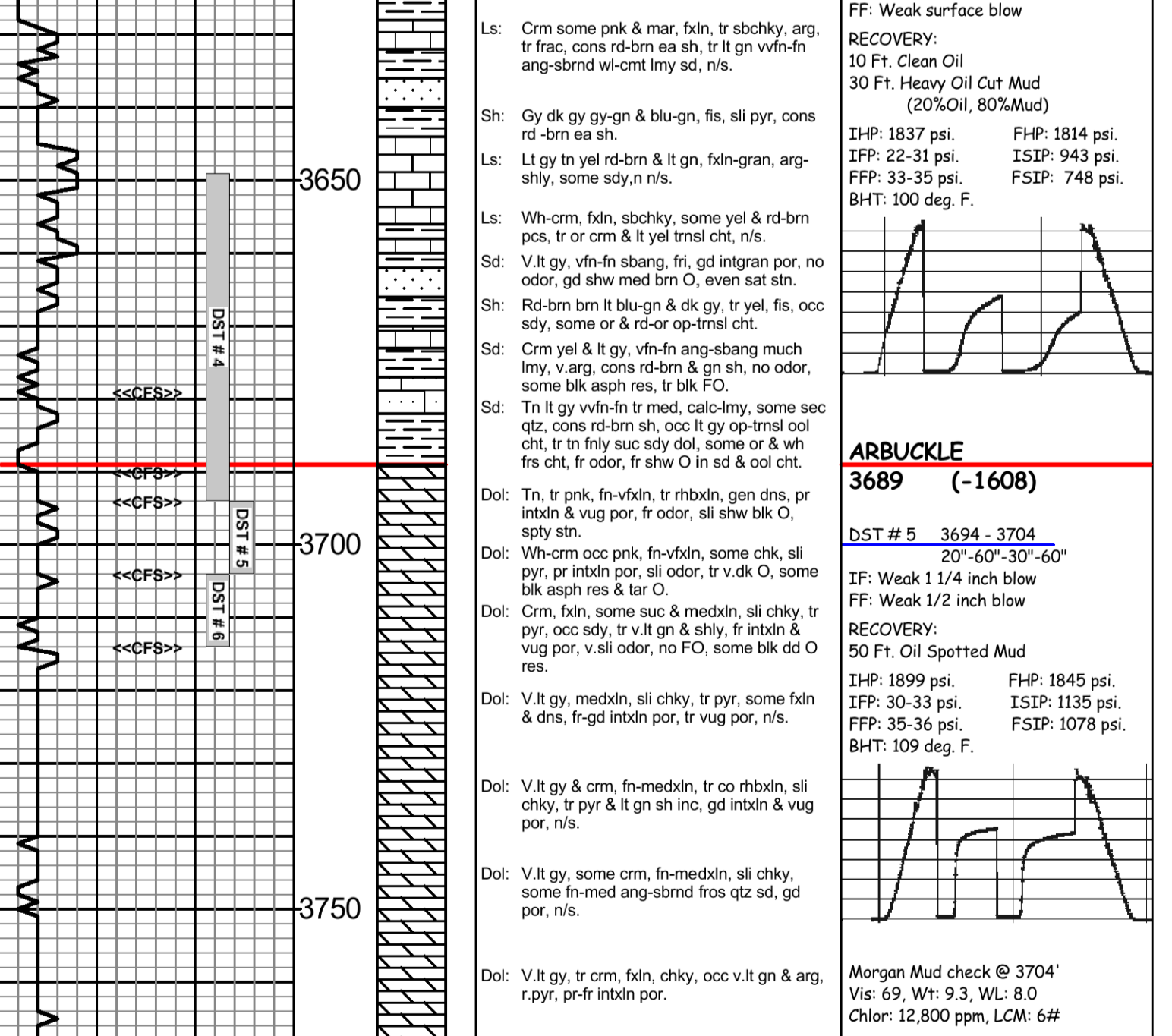
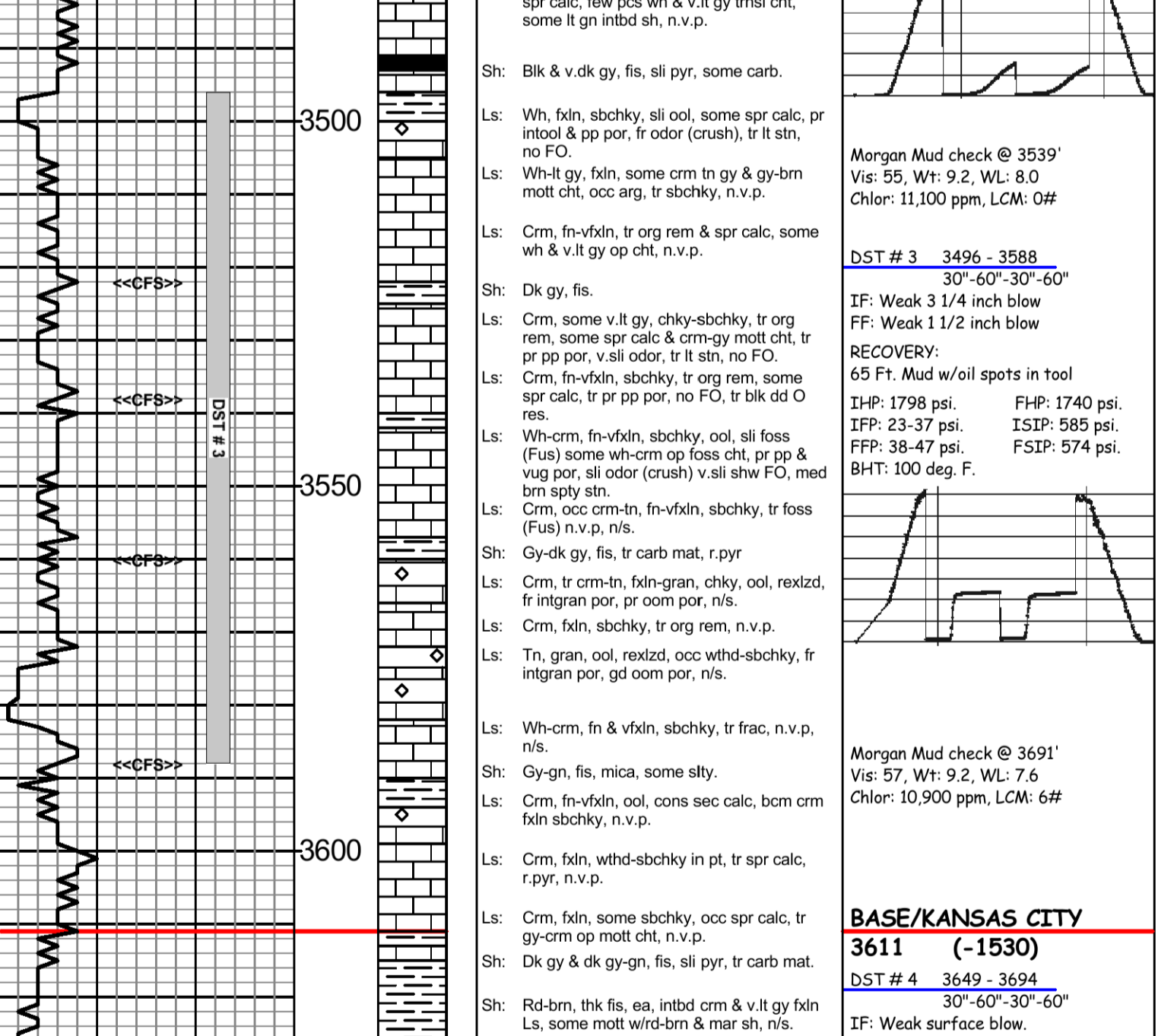
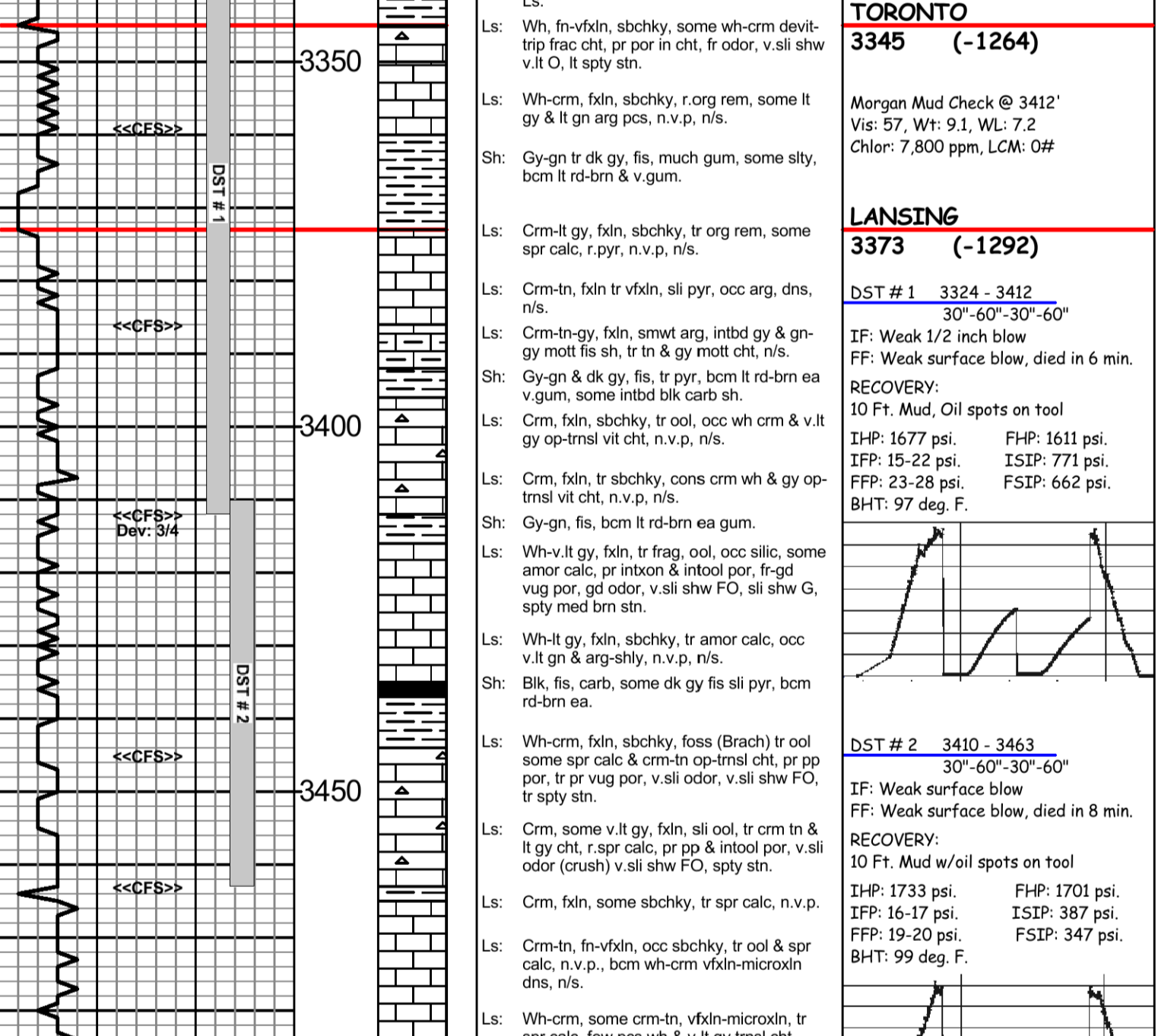
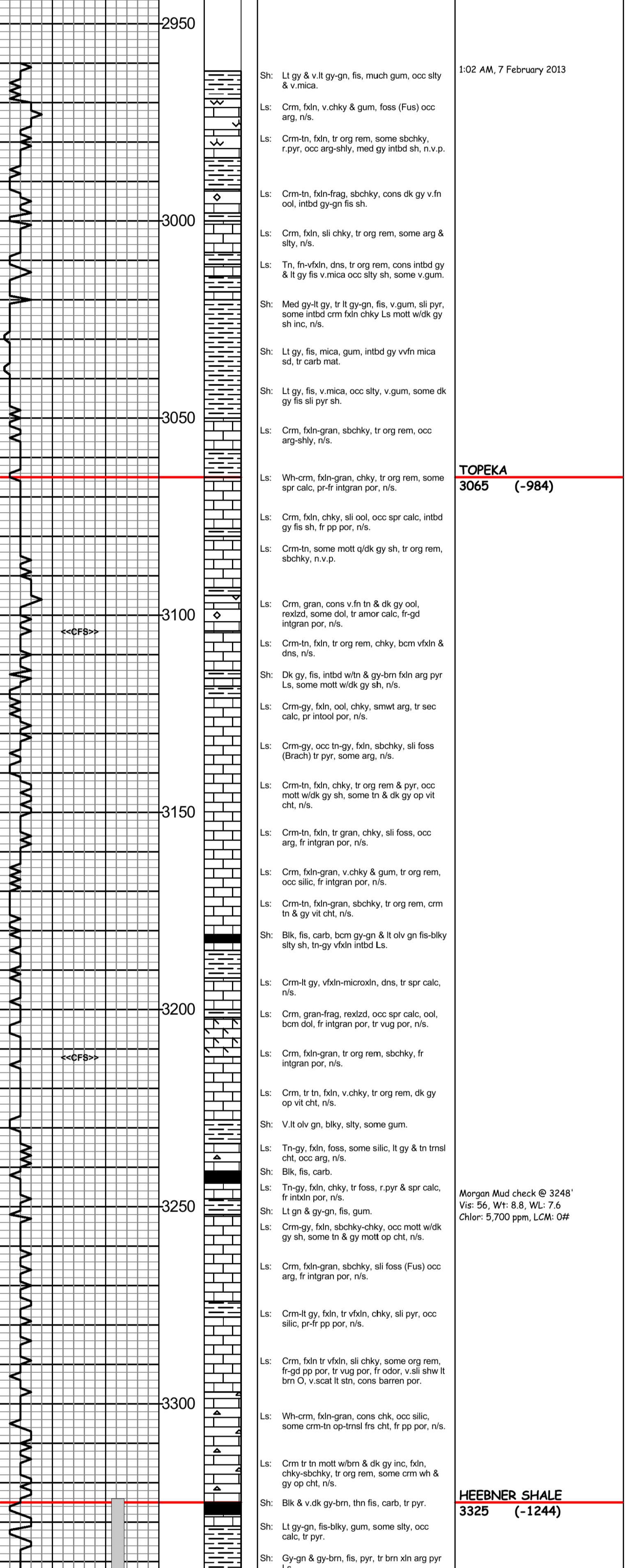
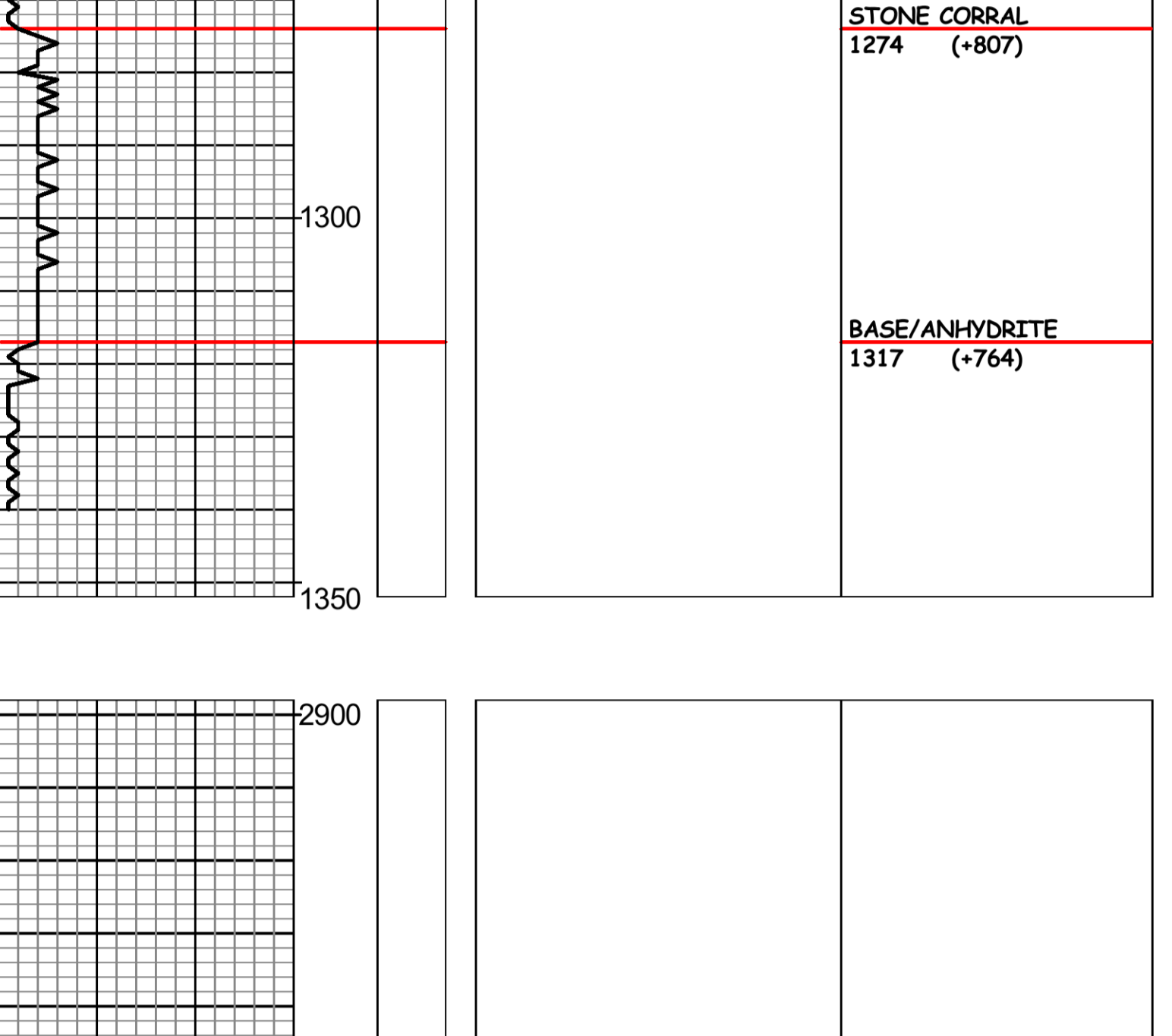
Micro-resistivity

Comp. Sonic



REMARKS table with columns for API, Drilling Fluids, Drill Stem Testing, Gas Trailer, Reserve Pit Chlorides.

Table with columns: DRILL TIME (MIN/FT), DEPTH, LITHOLOGY, SAMPLE DESCRIPTIONS, REMARKS.



Operator, Lease, Location, County information table.