



**TRILOBITE TESTING, INC.**

# DRILL STEM TEST REPORT

Samuel Gary Jr. & Associates, Inc.

**12/17S13W-Barton**

1515 Wynkoop Ste. #700  
Denver, CO 80202

**Morgenstern #1-12**

ATTN: Chris Mitchell

Job Ticket: 50347

**DST#: 1**

Test Start: 2106.02.06 @ 06:28:15

## GENERAL INFORMATION:

Formation: **LKC "H, I, & J"**

Deviated: No Whipstock: ft (KB)

Time Tool Opened: 08:40:15

Time Test Ended: 14:44:15

Test Type: Conventional Bottom Hole (Initial)

Tester: Dustin Rash

Unit No: 66

**Interval: 3240.00 ft (KB) To 3305.00 ft (KB) (TVD)**

Reference Elevations: 1891.00 ft (KB)

Total Depth: 3305.00 ft (KB) (TVD)

1883.00 ft (CF)

Hole Diameter: 7.88 inches Hole Condition: Fair

KB to GR/CF: 8.00 ft

**Serial #: 8354**

**Inside**

Press @ Run Depth: 57.55 psig @ 3244.00 ft (KB)

Capacity: 8000.00 psig

Start Date: 2013.02.09

End Date:

2013.02.09

Last Calib.:

2013.02.09

Start Time:

06:38:15

End Time:

14:44:15

Time On Btm:

2013.02.09 @ 08:39:45

Time Off Btm:

2013.02.09 @ 12:29:45

## TEST COMMENT:

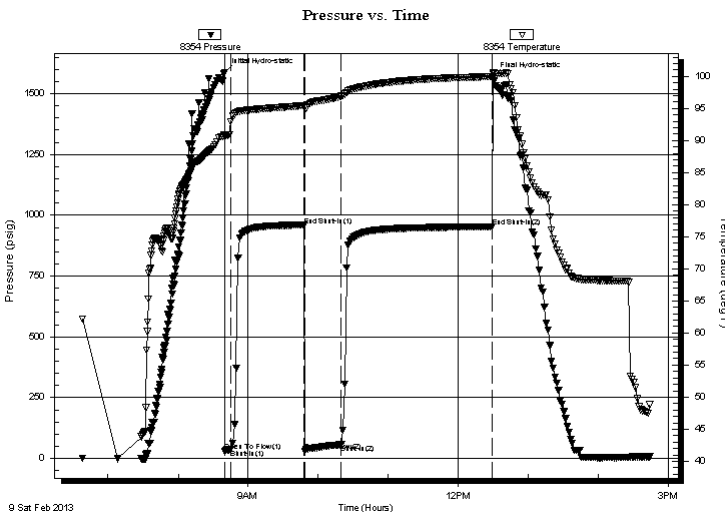
IF-Strong building blow . BOB @ 5 minutes.

ISI-Weak surface return @ 30 seconds. Died @ 17 minutes.

FF-Strong blow . BOB @ 30 seconds.

FSI-Return @ 2 minutes. Built to 1/2 inch. Died @ 35 minutes. Times-5-60-30-120

## PRESSURE SUMMARY



Time (Min.)	Pressure (psig)	Temp (deg F)	Annotation
0	1587.39	90.95	Initial Hydro-static
1	30.64	90.78	Open To Flow (1)
6	37.35	92.89	Shut-In(1)
68	956.28	95.43	End Shut-In(1)
69	28.52	95.19	Open To Flow (2)
100	57.55	96.91	Shut-In(2)
229	952.61	99.96	End Shut-In(2)
230	1569.40	100.48	Final Hydro-static

## Recovery

Length (ft)	Description	Volume (bbl)
110.00	Gsy HOCM 30%Gas/40%Oil/30%Mud	1.26
0.00	756' G.I.P.	0.00

## Gas Rates

Choke (inches)	Pressure (psig)	Gas Rate (Mcf/d)



**TRILOBITE  
TESTING, INC.**

**DRILL STEM TEST REPORT**

Samuel Gary Jr. & Associates, Inc.

**12/17S13W-Barton**

1515 Wynkoop Ste. #700  
Denver, CO 80202

**Morgenstern #1-12**

Job Ticket: 50347 **DST#: 1**

ATTN: Chris Mitchell

Test Start: 2106.02.06 @ 06:28:15

**GENERAL INFORMATION:**

Formation: **LKC "H, I, & J"**

Deviated: No Whipstock: ft (KB)

Time Tool Opened: 08:40:15

Time Test Ended: 14:44:15

**Interval: 3240.00 ft (KB) To 3305.00 ft (KB) (TVD)**

Total Depth: 3305.00 ft (KB) (TVD)

Hole Diameter: 7.88 inches Hole Condition: Fair

Test Type: Conventional Bottom Hole (Initial)

Tester: Dustin Rash

Unit No: 66

Reference Elevations: 1891.00 ft (KB)

1883.00 ft (CF)

KB to GR/CF: 8.00 ft

**Serial #: 8520**

**Outside**

Press @ Run Depth: psig @ 3244.00 ft (KB)

Start Date: 2013.02.09

End Date: 2013.02.09

Start Time: 06:39:30

End Time: 14:45:00

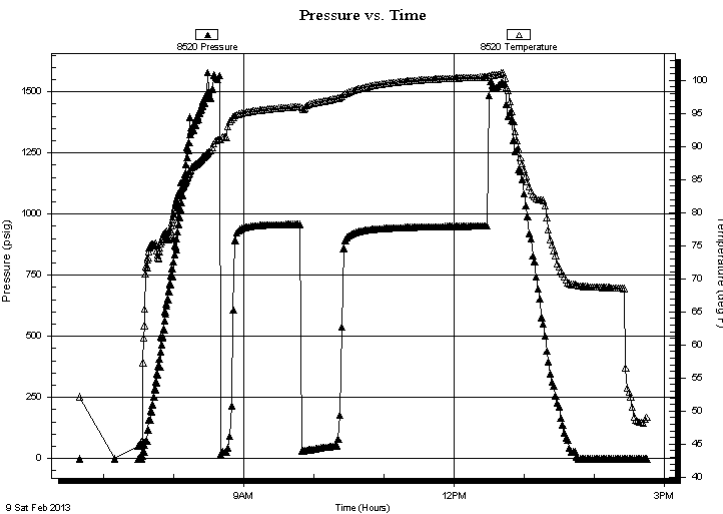
Capacity: 8000.00 psig

Last Calib.: 2013.02.09

Time On Btm:

Time Off Btm:

**TEST COMMENT:** IF-Strong building blow . BOB @ 5 minutes.  
ISI-Weak surface return @ 30 seconds. Died @ 17 minutes.  
FF-Strong blow . BOB @ 30 seconds.  
FSI-Return @ 2 minutes. Built to 1/2 inch. Died @ 35 minutes. Times-5-60-30-120



**PRESSURE SUMMARY**

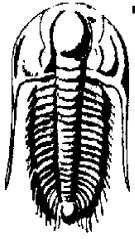
Time (Min.)	Pressure (psig)	Temp (deg F)	Annotation

**Recovery**

Length (ft)	Description	Volume (bbl)
110.00	Gsy HOCM 30%Gas/40%Oil/30%Mud	1.26
0.00	756' G.I.P.	0.00

**Gas Rates**

	Choke (inches)	Pressure (psig)	Gas Rate (Mcf/d)



**TRILOBITE TESTING, INC.**

# DRILL STEM TEST REPORT

Samuel Gary Jr. & Associates, Inc.

**12/17S13W-Barton**

1515 Wynkoop Ste. #700  
Denver, CO 80202

**Morgenstern #1-12**

Job Ticket: 50347      **DST#: 1**

ATTN: Chris Mitchell

Test Start: 2106.02.06 @ 06:28:15

## GENERAL INFORMATION:

Formation: **LKC "H, I, & J"**

Deviated: No Whipstock: ft (KB)

Time Tool Opened: 08:40:15

Time Test Ended: 14:44:15

Test Type: Conventional Bottom Hole (Initial)

Tester: Dustin Rash

Unit No: 66

Interval: **3240.00 ft (KB) To 3305.00 ft (KB) (TVD)**

Reference Elevations: 1891.00 ft (KB)

Total Depth: 3305.00 ft (KB) (TVD)

1883.00 ft (CF)

Hole Diameter: 7.88 inches Hole Condition: Fair

KB to GR/CF: 8.00 ft

**Serial #: 8653**

**Fluid**

Press@RunDepth:                  psig @ 3210.00 ft (KB)

Capacity: 8000.00 psig

Start Date: 2013.02.09      End Date: 2013.02.09

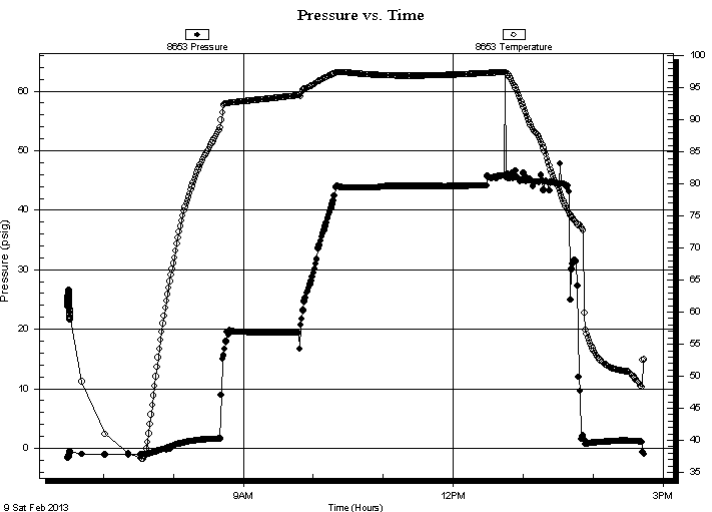
Last Calib.: 2013.02.09

Start Time: 06:29:46      End Time: 14:43:15

Time On Btm:

Time Off Btm:

**TEST COMMENT:** IF-Strong building blow . BOB @ 5 minutes.  
ISI-Weak surface return @ 30 seconds. Died @ 17 minutes.  
FF-Strong blow . BOB @ 30 seconds.  
FSI-Return @ 2 minutes. Built to 1/2 inch. Died @ 35 minutes. Times-5-60-30-120



## PRESSURE SUMMARY

Time (Min.)	Pressure (psig)	Temp (deg F)	Annotation

## Recovery

Length (ft)	Description	Volume (bbl)
110.00	Gsy HOCM 30%Gas/40%Oil/30%Mud	1.26
0.00	756' G.I.P.	0.00

## Gas Rates

	Choke (inches)	Pressure (psig)	Gas Rate (Mcf/d)



**TRILOBITE  
TESTING, INC.**

# DRILL STEM TEST REPORT

**FLUID SUMMARY**

Samuel Gary Jr. & Associates, Inc.

**12/17S13W-Barton**

1515 Wynkoop Ste. #700  
Denver, CO 80202

**Morgenstern #1-12**

Job Ticket: 50347

**DST#: 1**

ATTN: Chris Mitchell

Test Start: 2106.02.06 @ 06:28:15

## Mud and Cushion Information

Mud Type: Gel Chem

Cushion Type:

Oil API:

deg API

Mud Weight: 9.00 lb/gal

Cushion Length:

ft

Water Salinity:

ppm

Viscosity: 50.00 sec/qt

Cushion Volume:

bbbl

Water Loss: 8.77 in<sup>3</sup>

Gas Cushion Type:

Resistivity: ohm.m

Gas Cushion Pressure:

psig

Salinity: 4000.00 ppm

Filter Cake: inches

## Recovery Information

Recovery Table

Length ft	Description	Volume bbl
110.00	Gsy HOCM 30%Gas/40%Oil/30%Mud	1.261
0.00	756' G.I.P.	0.000

Total Length: 110.00 ft      Total Volume: 1.261 bbl

Num Fluid Samples: 0

Num Gas Bombs: 0

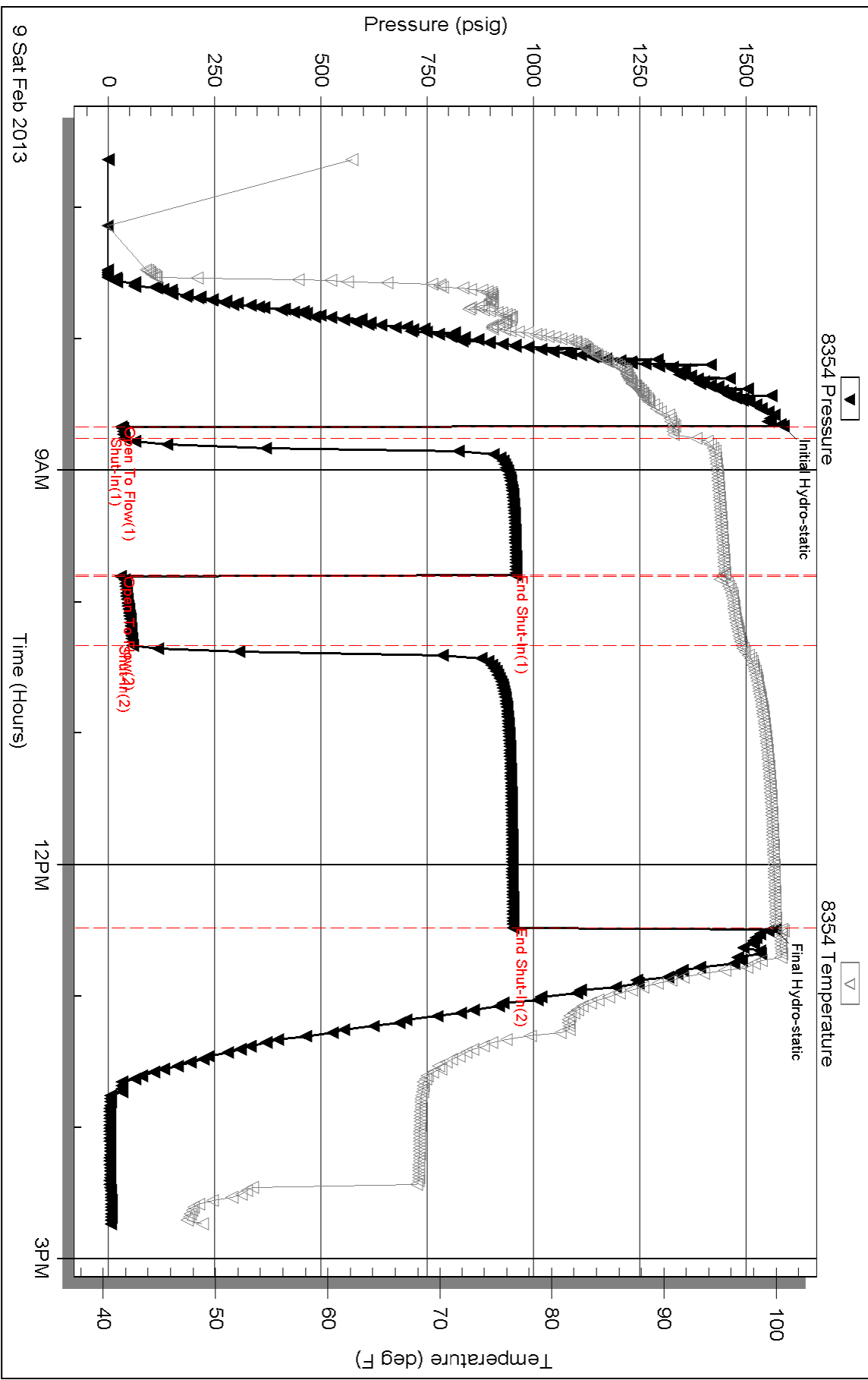
Serial #:

Laboratory Name:

Laboratory Location:

Recovery Comments: Sampler- Pressure 50# - .25 cubic feet gas- 200ML Gas- 500ML Oil- 300ML Mud- 100ML Total.

### Pressure vs. Time

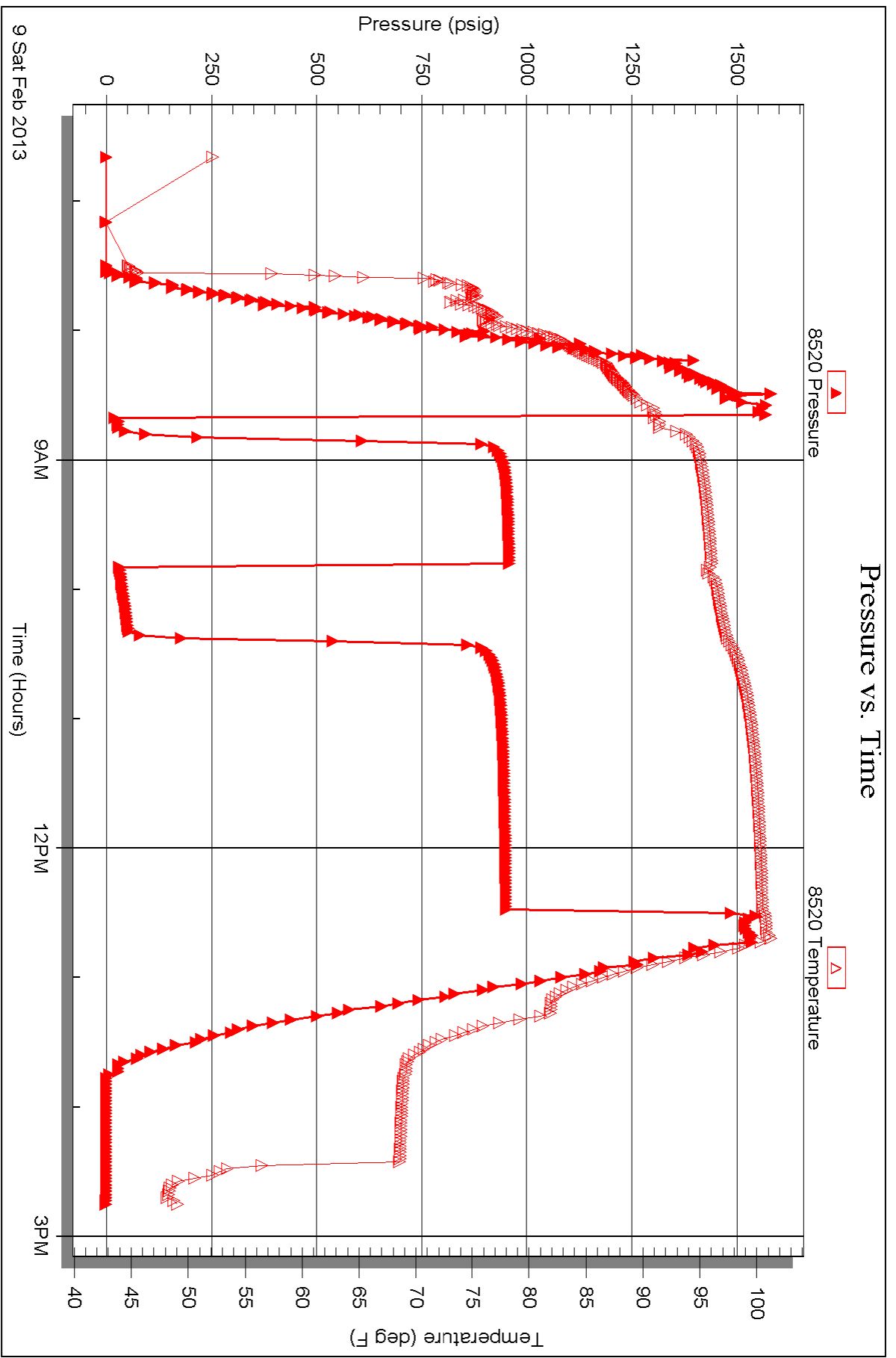


Serial #: 8520

Outside Samuel Gary Jr. & Associates, Inc.

Morgenstern #1-12

DST Test Number: 1



Triobite Testing, Inc

Ref. No: 50347

Printed: 2013.02.10 @ 09:12:15

Serial #: 8653

Fluid

Samuel Gary Jr. & Associates, Inc.

Morgenstern #1-12

DST Test Number: 1

