



Fall & Associates
 Stake and Elevation Service
 719 W. 5th Street
 P.O. Box 404
 Concordia, KS. 68901
 1-800-536-2821

Date 5-24-13

Invoice Number 0523131

MURFIN DRILLING
 Operator

2-23
 Number

Frisbie
 Farm Name

Rawlins-KS
 County-State

23 2s 36w
 S T R

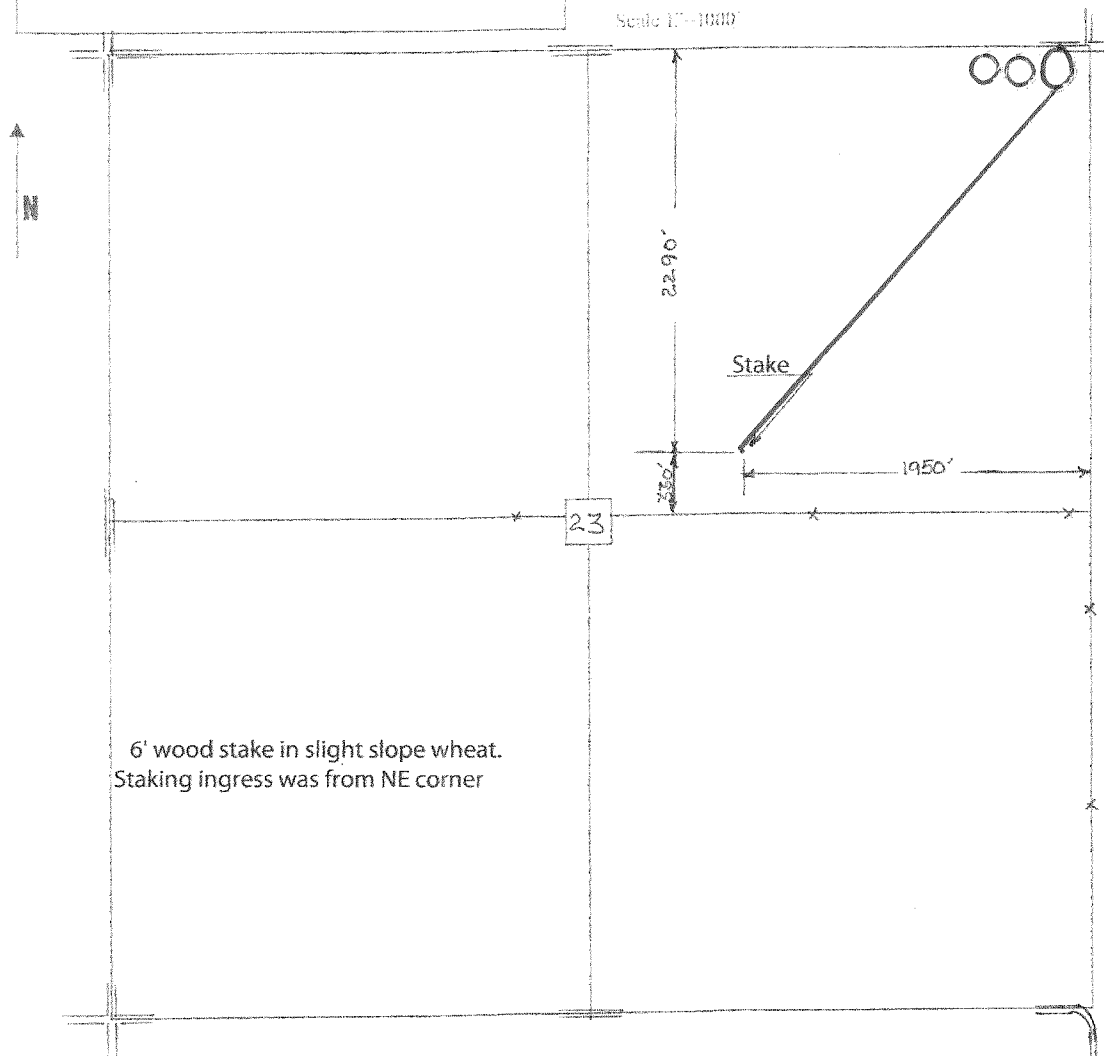
2290'FNL 1950'FEL
 Location

Murfin Drilling
 250 N. Water
 Suite 300
 Wichita, Ks. 67202

Elevation 3285 Gr.

Ordered By: Shauna

Scale 1"=1000'



6' wood stake in slight slope wheat.
 Staking ingress was from NE corner