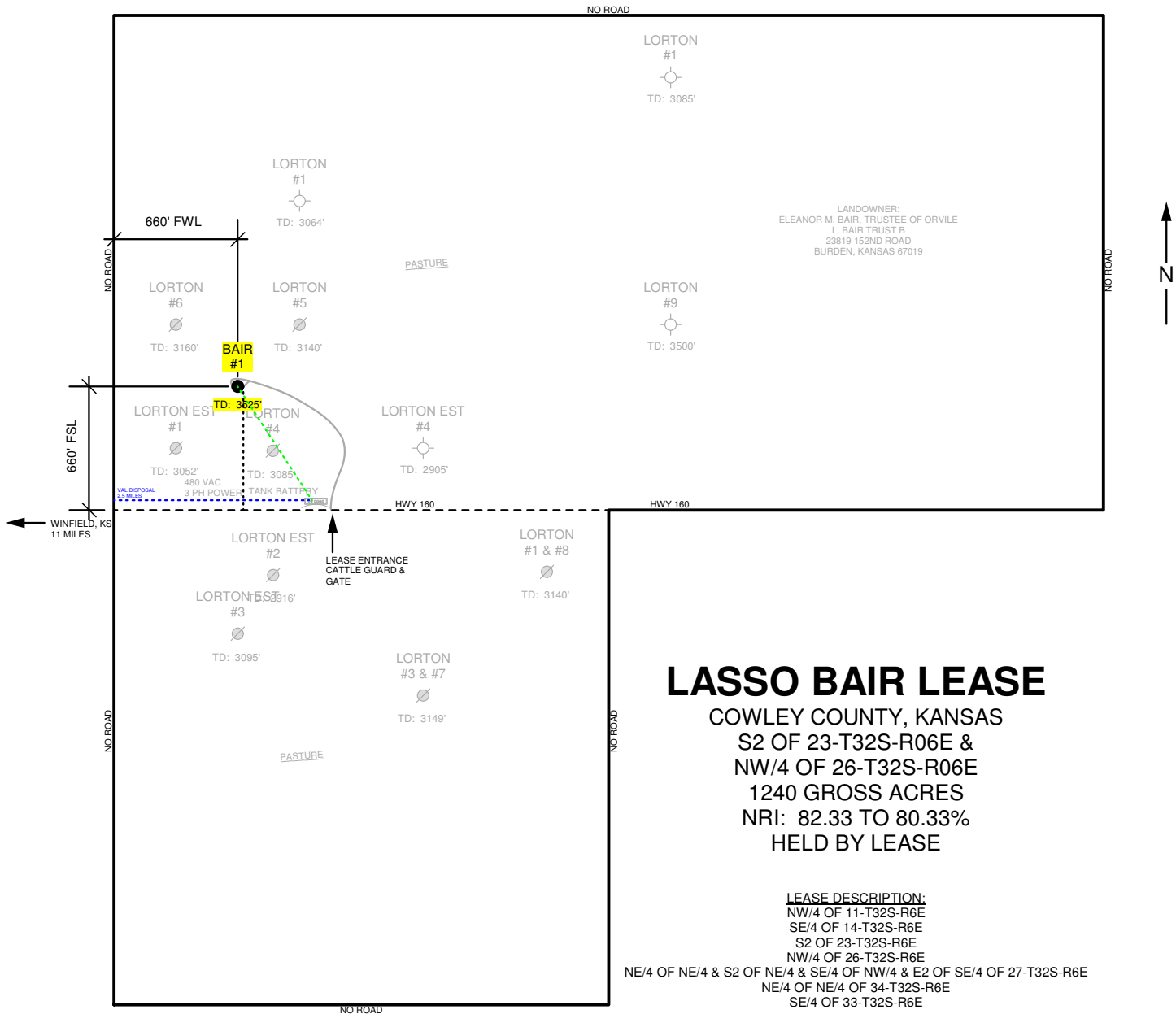


<u>LASSO ENERGY LLC</u> OPERATOR	<u>BAIR</u> LEASE	<u>1</u> WELL NO.	<u>06/17/2013</u> DATE
<u>COWLEY</u> COUNTY	<u>KANSAS</u> STATE	<u>23</u> S	<u>32S</u> T
<u>ELEVATION</u>	<u>660' FSL, 660' FWL OF SEC</u> LOCATION		
		<u>06E</u> R	



LASSO BAIR LEASE
COWLEY COUNTY, KANSAS
S2 OF 23-T32S-R6E &
NW/4 OF 26-T32S-R6E
1240 GROSS ACRES
NRI: 82.33 TO 80.33%
HELD BY LEASE

LEASE DESCRIPTION:
NW/4 OF 11-T32S-R6E
SE/4 OF 14-T32S-R6E
S2 OF 23-T32S-R6E
NW/4 OF 26-T32S-R6E
NE/4 OF NE/4 & S2 OF NE/4 & SE/4 OF NW/4 & E2 OF SE/4 OF 27-T32S-R6E
NE/4 OF NE/4 OF 34-T32S-R6E
SE/4 OF 33-T32S-R6E

- - - - - 2" POLY GAS LINE
- - - - - 3" PVC WATER DISPOSAL LINE
- - - - - 3" PVC LEAD (OIL & WATER) LINE
- — — — — LEASE ROAD

BK
06/17/2013
SURVEYED