



**DIAMOND TESTING, LLC**  
P.O. Box 157  
**HOISINGTON, KANSAS 67544**  
(620) 653-7550 • (800) 542-7313  
STC/Schneweis11dst3

Company Richlan Drilling Lease & Well No. Schneweis No. 11  
Elevation 1925 GL Formation Arbuckle Effective Pay \_\_\_\_\_ Ft. Ticket No. J3117  
Date 5-26-13 Sec. 5 Twp. 17S Range 11W County Barton State Kansas  
Test Approved By Robert A. (Bob) Schreiber Diamond Representative \_\_\_\_\_ John C. Riedl

Formation Test No. 3 Interval Tested from 3,332 ft. to 3,383 ft. Total Depth 3,383 ft.  
Packer Depth 3,327 ft. Size 6 3/4 in. Packer Depth \_\_\_\_\_ ft. Size \_\_\_\_\_ in.  
Packer Depth 3,332 ft. Size 6 3/4 in. Packer Depth \_\_\_\_\_ ft. Size \_\_\_\_\_ in.  
Depth of Selective Zone Set \_\_\_\_\_ ft.

Top Recorder Depth (Inside) 3,335 ft. Recorder Number 30046 Cap. 6,000 psi.  
Bottom Recorder Depth (Outside) 3,380 ft. Recorder Number 11073 Cap. 4,000 psi.  
Below Straddle Recorder Depth \_\_\_\_\_ ft. Recorder Number \_\_\_\_\_ Cap. \_\_\_\_\_ psi.

Drilling Contractor Southwind Drilling, Inc. - Rig 6 Drill Collar Length \_\_\_\_\_ ft I.D. \_\_\_\_\_ in.  
Mud Type Chemical Viscosity 51 Weight Pipe Length \_\_\_\_\_ ft I.D. \_\_\_\_\_ in.  
Weight 9.3 Water Loss 8.0 cc. Drill Pipe Length 3,312 ft I.D. 3 1/2 in.  
Chlorides 4,900 P.P.M. Test Tool Length 20 ft Tool Size 3 1/2-IF in.  
Jars: Make Sterling Serial Number Not Run Anchor Length 51 ft. Size 4 1/2-FH in.  
Did Well Flow? No Reversed Out No Surface Choke Size 1 in. Bottom Choke Size 5/8 in.  
Main Hole Size 7 7/8 in. Tool Joint Size 4 1/2-XH in.

Blow: 1st Open: Strong blow. Off bottom of bucket in 15 mins. No blow back during shut-in.

2nd Open: Strong blow. Off bottom of bucket in 12 mins. No blow back during shut-in.

Recovered 500 ft. of oil specked muddy water = 7.115000 bbls. (Chlorides: 21,000 Ppm)

Recovered \_\_\_\_\_ ft. of \_\_\_\_\_

Recovered \_\_\_\_\_ ft. of \_\_\_\_\_

Recovered \_\_\_\_\_ ft. of \_\_\_\_\_

Recovered \_\_\_\_\_ ft. of \_\_\_\_\_

Recovered \_\_\_\_\_ ft. of \_\_\_\_\_

Remarks \_\_\_\_\_

Time Set Packer(s) 6:00 P.M. Time Started off Bottom 8:30 P.M. Maximum Temperature 110°  
Initial Hydrostatic Pressure.....(A) 1640 P.S.I.  
Initial Flow Period.....Minutes 30 (B) 21 P.S.I. to (C) 121 P.S.I.  
Initial Closed In Period.....Minutes 30 (D) 839 P.S.I.  
Final Flow Period.....Minutes 45 (E) 126 P.S.I. to (F) 257 P.S.I.  
Final Closed In Period.....Minutes 45 (G) 841 P.S.I.  
Final Hydrostatic Pressure.....(H) 1592 P.S.I.

## GENERAL INFORMATION

### Client Information:

Company: RICHLAN DRLG  
Contact: RICK SCHREIBER  
Phone: Fax: e-mail:

### Site Information:

Contact: BOB SCHREIBER  
Phone: Fax: e-mail:

### Well Information:

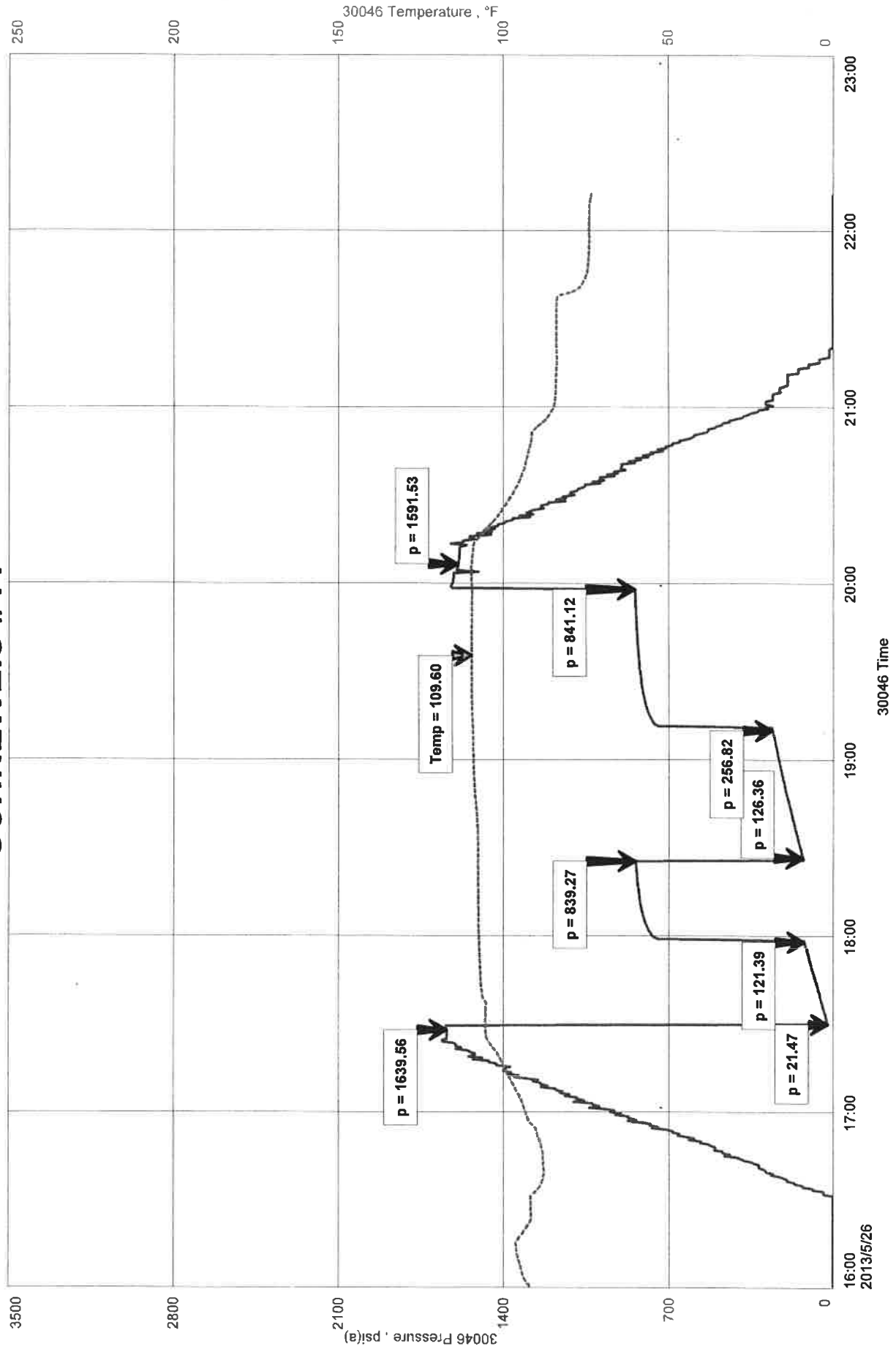
Name: SCHNEWEIS #11  
Operator: RICHLAN DRLG  
Location-Downhole:  
Location-Surface: S5/17S/11W

### Test Information:

Company: DIAMOND TESTING  
Representative: JOHN RIEDL  
Supervisor: BOB SCHREIBER  
Test Type: CONVENTIONAL Job Number: D1321  
Test Unit:  
Start Date: 2013/05/26 Start Time: 16:30:00  
End Date: 2013/05/26 End Time: 22:40:00  
Report Date: 2013/05/26 Prepared By: JOHN RIEDL  
Remarks: Qualified By: BOB SCHREIBER

RECOVERY: 500' OIL SPECKED MUDDY WATER

# SCHNEWEIS #11



RICHMAN DRCC

SCHMIDT A #120113

#120113

RUC 11013

015112

