

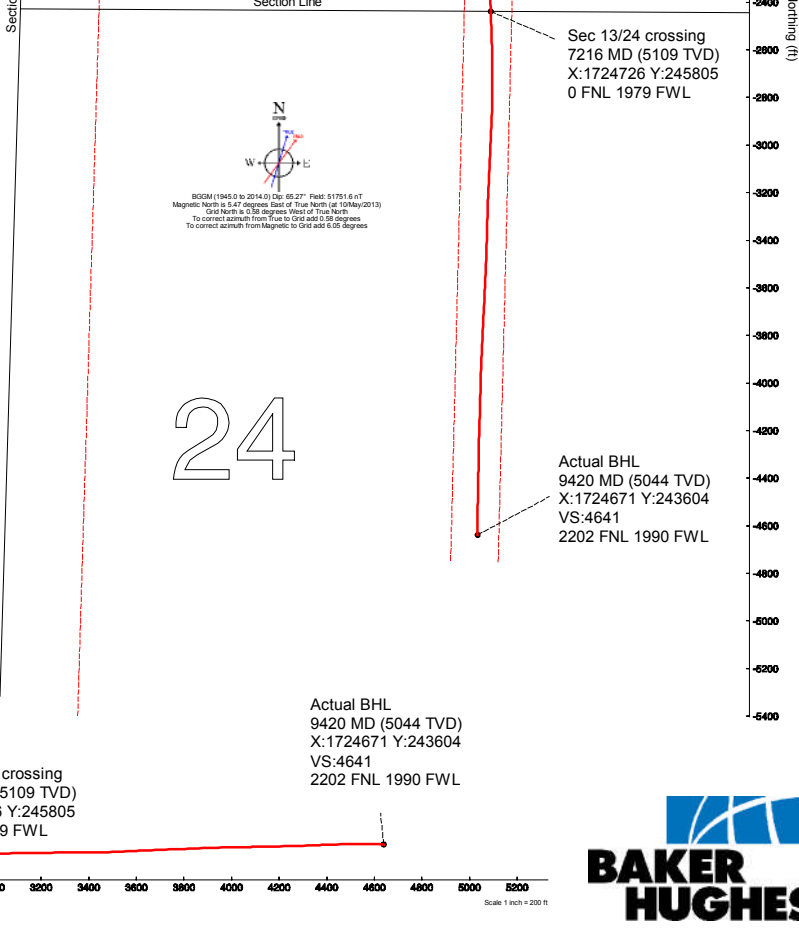
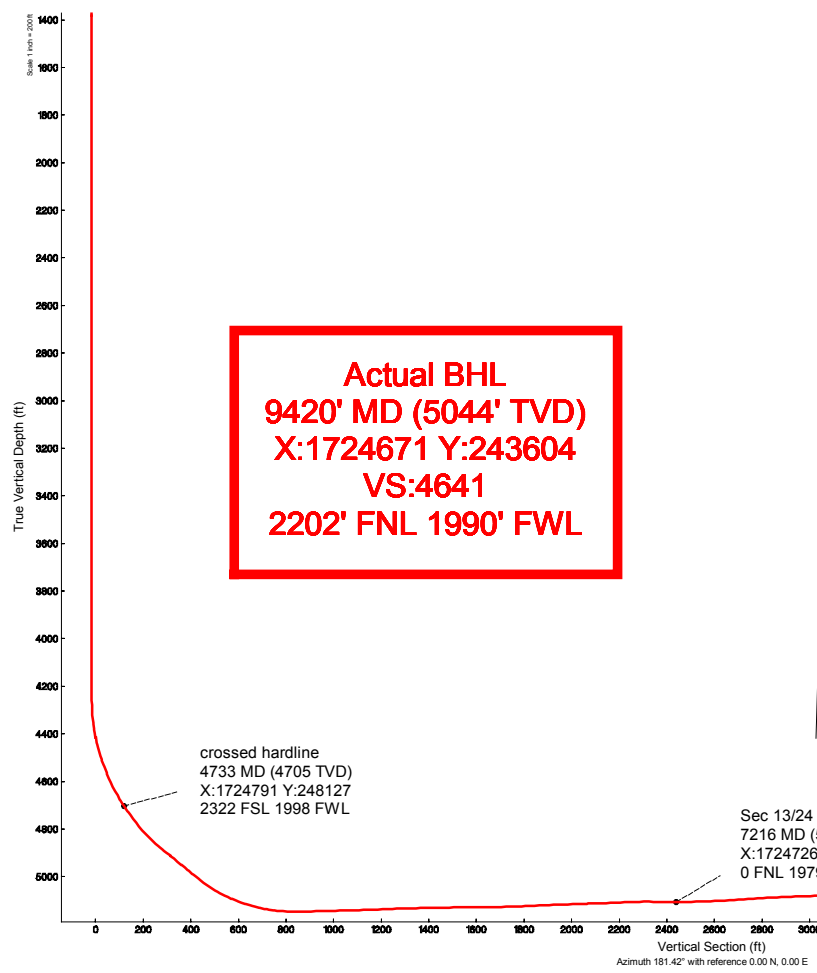
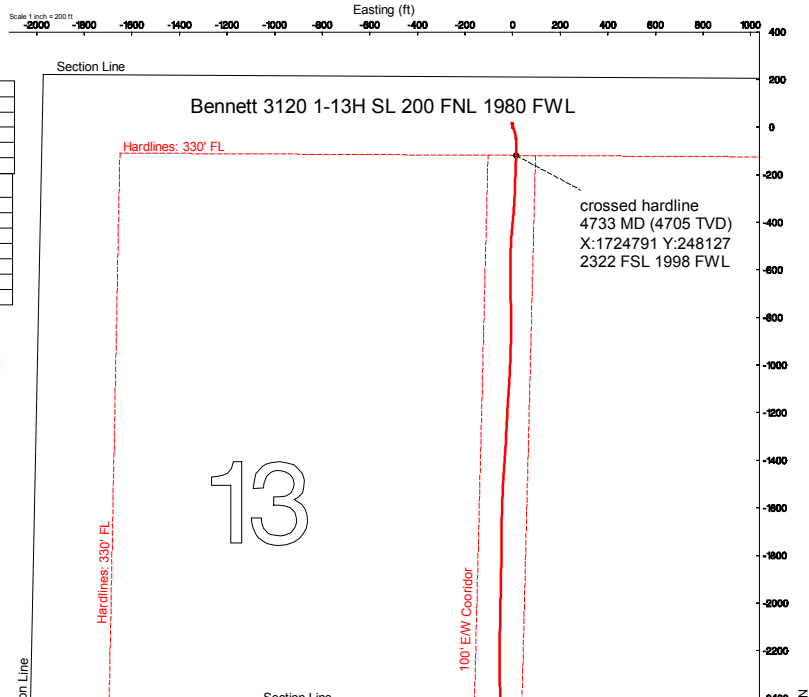
Sandridge Energy

Bennett 3120 1-13H (Plan 1)
 Bennett 3120 1-13H SL 200 FNL 1980 FWL
 Comanche County, Kansas (Sandridge Energy) NAD27 / Grid

Plot reference wellpath is Plan 1		Grid System: NAD27 / Lambert Kansas SP, Southern Zone (1502), US feet
True vertical depths are referenced to Lariat 38 (RT)	North Reference: Grid north	Scale: True distance
Measured depths are referenced to Lariat 38 (RT)	Scale: True distance	Depths are in feet
Lariat 38 (RT) to Mean Sea Level: 2062 feet	Created by: bouglac on 13/May/2013	
Mean Sea Level to Mud line (At Slot: Bennett 3120 1-13H SL 200 FNL 1980 FWL): -2042 feet		
Coordinates are in feet referenced to Slot		

Location Information

Facility Name	Grid East (US ft)	Grid North (US ft)	Latitude	Longitude
Bennett 3120 1-13H Sec. 13/24-31S-20W	1724775.000	248244.000	37°20'40.566"N	99°26'48.274"W
Slot	Local N (ft)	Local E (ft)	Grid East (US ft)	Grid North (US ft)
Bennett 3120 1-13H SL 200 FNL 1980 FWL	0.00	0.00	1724775.000	248244.000
Lariat 38 (RT) to Mud line (At Slot: Bennett 3120 1-13H SL 200 FNL 1980 FWL)			20ft	
Mean Sea Level to Mud line (At Slot: Bennett 3120 1-13H SL 200 FNL 1980 FWL)			-2042ft	
Lariat 38 (RT) to Mean Sea Level			2062ft	





Actual Wellpath Report

Sandridge Bennett 3120 1-13H_Final Surveys.
Page n of nn



REFERENCE WELLPATH IDENTIFICATION			
Operator	Sandridge Energy	Slot	Bennett 3120 1-13H SL 200 FNL 1980 FWL
Area	Kansas	Well	Subject
Field	Comanche County, Kansas (Sandridge Energy) NAD27 / Grid	Wellbore	Bennett 3120 1-13H Actual
Facility	Bennett 3120 1-13H Sec. 13/24- 31S- 20W		

REPORT SETUP INFORMATION			
Projection System	NAD27 / Lambert Kansas SP, Southern Zone (1502), US feet		
North Reference	Grid	Software System	WellArchitect™ 3.0.0
Convergence at slot	0.58° West	User	Adammic
Scale	0.999986	Report Generated	13/Jun/2013 at 2:05:28 PM
Wellbore last revised	05-10-2013	Database/Source file	intokcapp01

WELLPATH LOCATION						
	Local coordinates		Grid coordinates		Geographic coordinates	
	North[ft]	East[ft]	Easting[US ft]	Northing[US ft]	Latitude	Longitude
Slot Location	0.00	0.00	1724775.00	248244.00	37°20'40.566"N	99°26'48.274"W
Facility Reference Pt			1724775.00	248244.00	37°20'40.566"N	99°26'48.274"W
Field Reference Pt			1773194.47	191302.75	37°11'22.030"N	99°16'42.810"W

WELLPATH DATUM			
Calculation method	Minimum curvature	Lariat 38 (RT) to Facility Vertical Datum	20.00ft
Horizontal Reference Pt	Slot	Lariat 38 (RT) to Mean Sea Level	2062.00ft
Vertical Reference Pt	Lariat 38 (RT)	Lariat 38 (RT) to Mud Line at Slot (Bennett 3120 1-13H SL 200 FNL 1980 FWL)	20.00ft
MD Reference Pt	Lariat 38 (RT)	Section Origin	N 0.00, E 0.00 ft
Field Vertical Reference	Mean Sea Level	Section Azimuth	181.42°



Actual Wellpath Report

Sandridge Bennett 3120 1-13H_Final Surveys.
Page n of nn



REFERENCE WELLPATH IDENTIFICATION			
Operator	Sandridge Energy	Slot	Bennett 3120 1-13H SL 200 FNL 1980 FWL
Area	Kansas	Well	Subject
Field	Comanche County, Kansas (Sandridge Energy) NAD27 / Grid	Wellbore	Bennett 3120 1-13H Actual
Facility	Bennett 3120 1-13H Sec. 13/24- 31S- 20W		

WELLPATH DATA (102 stations) † = interpolated/extrapolated station										
MD [ft]	Inclination [°]	Azimuth [°]	TVD [ft]	Vert Sect [ft]	North [ft]	East [ft]	Grid East [US ft]	Grid North [US ft]	DLS [°/100ft]	Comments
0.00†	0.000	0.250	0.00	0.00	0.00	0.00	1724775.00	248244.00	0.00	
20.00	0.000	0.250	20.00	0.00	0.00	0.00	1724775.00	248244.00	0.00	
243.00	1.300	0.250	242.98	-2.53	2.53	0.01	1724775.01	248246.53	0.58	
491.00	1.500	0.240	490.91	-8.59	8.59	0.04	1724775.04	248252.59	0.08	
768.00	1.700	0.130	767.80	-16.32	16.32	0.06	1724775.06	248260.32	0.07	
994.00	0.130	200.720	993.77	-19.43	19.44	-0.02	1724774.98	248263.44	0.81	
1453.00	0.060	254.760	1452.77	-18.87	18.89	-0.44	1724774.56	248262.89	0.02	
1948.00	0.030	346.330	1947.77	-18.92	18.94	-0.72	1724774.28	248262.94	0.01	
2423.00	0.160	302.670	2422.77	-19.38	19.42	-1.31	1724773.69	248263.42	0.03	
2898.00	0.070	184.010	2897.77	-19.44	19.49	-1.88	1724773.12	248263.49	0.04	
3373.00	0.070	246.640	3372.77	-19.03	19.09	-2.17	1724772.83	248263.09	0.02	
3848.00	0.060	117.230	3847.77	-18.80	18.86	-2.22	1724772.78	248262.86	0.02	
4228.00	0.060	327.980	4227.77	-18.88	18.94	-2.15	1724772.85	248262.93	0.03	
4260.00	0.470	169.080	4259.76	-18.76	18.82	-2.13	1724772.87	248262.82	1.65	
4291.00	1.970	166.450	4290.76	-18.12	18.18	-1.98	1724773.02	248262.18	4.84	
4323.00	4.710	164.430	4322.70	-16.33	16.38	-1.50	1724773.50	248260.38	8.57	
4355.00	7.410	162.060	4354.52	-13.13	13.15	-0.51	1724774.49	248257.15	8.47	
4386.00	10.380	160.580	4385.14	-8.63	8.61	1.03	1724776.03	248252.61	9.61	
4418.00	12.420	161.090	4416.51	-2.71	2.64	3.11	1724778.11	248246.64	6.38	
4450.00	15.070	161.520	4447.59	4.43	-4.57	5.54	1724780.54	248239.43	8.29	
4481.00	17.130	164.120	4477.37	12.58	-12.78	8.07	1724783.07	248231.22	7.04	
4513.00	18.770	166.610	4507.81	22.05	-22.32	10.55	1724785.55	248221.68	5.66	
4545.00	20.920	170.000	4537.91	32.63	-32.96	12.74	1724787.74	248211.04	7.62	
4576.00	22.470	172.500	4566.72	43.91	-44.28	14.47	1724789.47	248199.72	5.82	
4608.00	24.120	175.470	4596.11	56.46	-56.87	15.79	1724790.78	248187.14	6.33	
4639.00	26.910	178.870	4624.08	69.77	-70.20	16.42	1724791.42	248173.80	10.16	
4671.00	29.390	181.290	4652.30	84.86	-85.29	16.39	1724791.39	248158.71	8.53	
4703.00	30.870	181.410	4679.97	100.92	-101.35	16.01	1724791.01	248142.65	4.63	
4733.00†	33.202	182.215	4705.40	116.83	-117.25	15.50	1724790.50	248126.75	7.90	crossed hardline 4733 MD (4705 TVD) X:1724791 Y:248127 2322 FSL 1998 FWL
4734.00	33.280	182.240	4706.24	117.38	-117.80	15.48	1724790.48	248126.20	7.90	
4766.00	35.030	182.510	4732.72	135.34	-135.75	14.74	1724789.74	248108.25	5.49	
4798.00	36.410	181.680	4758.70	154.02	-154.42	14.06	1724789.06	248089.58	4.57	
4829.00	39.440	181.940	4783.15	173.07	-173.46	13.45	1724788.45	248070.54	9.79	
4861.00	41.760	182.150	4807.44	193.89	-194.27	12.71	1724787.71	248049.73	7.26	
4893.00	43.830	182.650	4830.92	215.63	-215.99	11.80	1724786.80	248028.01	6.56	
4924.00	46.500	182.260	4852.78	237.61	-237.95	10.86	1724785.86	248006.05	8.66	
4956.00	50.010	181.640	4874.08	261.48	-261.81	10.05	1724785.05	247982.20	11.06	
4987.00	50.830	182.490	4893.83	285.37	-285.69	9.19	1724784.19	247958.32	3.39	
5019.00	51.000	183.390	4914.01	310.20	-310.49	7.91	1724782.91	247933.51	2.25	
5051.00	50.760	183.330	4934.20	335.01	-335.28	6.46	1724781.46	247908.73	0.76	
5082.00	50.960	184.600	4953.77	359.03	-359.26	4.79	1724779.79	247884.75	3.24	
5114.00	50.990	185.260	4973.92	383.84	-384.03	2.66	1724777.66	247859.98	1.61	
5145.00	50.900	185.680	4993.45	407.86	-407.99	0.36	1724775.36	247836.02	1.09	
5177.00	51.470	185.540	5013.51	432.72	-432.81	-2.07	1724772.93	247811.20	1.81	
5209.00	54.140	185.010	5032.85	458.15	-458.19	-4.41	1724770.59	247785.82	8.45	



Actual Wellpath Report

Sandridge Bennett 3120 1-13H_Final Surveys.
Page n of nn



REFERENCE WELLPATH IDENTIFICATION			
Operator	Sandridge Energy	Slot	Bennett 3120 1-13H SL 200 FNL 1980 FWL
Area	Kansas	Well	Subject
Field	Comanche County, Kansas (Sandridge Energy) NAD27 / Grid	Wellbore	Bennett 3120 1-13H Actual
Facility	Bennett 3120 1-13H Sec. 13/24- 31S- 20W		

WELLPATH DATA (102 stations) † = interpolated/extrapolated station										
MD [ft]	Inclination [°]	Azimuth [°]	TVD [ft]	Vert Sect [ft]	North [ft]	East [ft]	Grid East [US ft]	Grid North [US ft]	DLS [°/100ft]	Comments
5240.00	57.510	182.930	5050.26	483.77	-483.77	-6.18	1724768.82	247760.24	12.21	
5272.00	60.520	181.650	5066.74	511.20	-511.17	-7.27	1724767.73	247732.83	10.01	
5304.00	63.730	180.590	5081.69	539.48	-539.45	-7.82	1724767.18	247704.56	10.45	
5335.00	66.280	180.130	5094.79	567.57	-567.54	-8.00	1724767.00	247676.46	8.33	
5367.00	68.460	180.440	5107.10	597.10	-597.08	-8.14	1724766.86	247646.93	6.87	
5398.00	71.880	179.490	5117.62	626.24	-626.24	-8.12	1724766.88	247617.77	11.40	
5430.00	74.920	179.920	5126.76	656.89	-656.90	-7.97	1724767.03	247587.11	9.59	
5462.00	78.000	178.910	5134.25	687.98	-688.00	-7.65	1724767.35	247556.01	10.10	
5493.00	80.440	179.340	5140.05	718.41	-718.45	-7.18	1724767.82	247525.56	7.99	
5525.00	82.870	179.490	5144.69	750.05	-750.11	-6.86	1724768.14	247493.91	7.61	
5555.00	83.640	178.930	5145.87	759.97	-760.04	-6.72	1724768.28	247483.98	9.50	
5556.00	85.120	179.470	5147.92	780.85	-780.93	-6.43	1724768.57	247463.08	7.50	
5586.00	88.150	180.110	5149.69	810.78	-810.88	-6.32	1724768.68	247433.14	10.32	
5647.00	91.850	180.370	5149.69	871.76	-871.87	-6.58	1724768.42	247372.15	6.08	
5739.00	91.630	181.950	5146.89	963.71	-963.80	-8.44	1724766.56	247280.21	1.73	
5830.00	91.080	183.610	5144.74	1054.66	-1054.67	-12.85	1724762.15	247189.35	1.92	
5922.00	92.000	183.630	5142.27	1146.56	-1146.45	-18.66	1724756.34	247097.57	1.00	
6013.00	92.620	182.750	5138.60	1237.44	-1237.23	-23.72	1724751.28	247006.79	1.18	
6105.00	91.200	183.170	5135.53	1329.35	-1329.06	-28.47	1724746.54	246914.97	1.61	
6197.00	91.050	184.320	5133.73	1421.26	-1420.84	-34.47	1724740.53	246823.18	1.26	
6289.00	91.080	182.990	5132.02	1513.17	-1512.64	-40.34	1724734.66	246731.39	1.45	
6381.00	90.370	181.450	5130.85	1605.15	-1604.56	-43.90	1724731.10	246639.47	1.84	
6472.00	90.770	180.580	5129.95	1696.14	-1695.54	-45.51	1724729.49	246548.49	1.05	
6564.00	92.560	180.620	5127.27	1788.09	-1787.49	-46.47	1724728.53	246456.54	1.95	
6656.00	92.370	181.210	5123.32	1880.00	-1879.39	-47.94	1724727.06	246364.64	0.67	
6751.00	92.370	181.370	5119.39	1974.92	-1974.29	-50.08	1724724.92	246269.75	0.17	
6846.00	91.630	181.110	5116.07	2069.86	-2069.20	-52.13	1724722.87	246174.83	0.83	
6941.00	92.410	180.650	5112.72	2164.80	-2164.13	-53.59	1724721.41	246079.90	0.95	
7036.00	92.280	180.230	5108.84	2259.70	-2259.05	-54.32	1724720.68	245984.99	0.46	
7131.00	88.210	177.660	5108.43	2354.59	-2354.01	-52.57	1724722.43	245890.03	5.07	
7216.00†	90.474	177.830	5109.41	2439.40	-2438.93	-49.23	1724725.77	245805.11	2.67	Sec 13/24 crossing 7216 MD (5109 TVD) X:1724726 Y:245805 0 FNL 1979 FWL
7226.00	90.740	177.850	5109.30	2449.38	-2448.92	-48.85	1724726.15	245795.12	2.67	
7321.00	92.190	178.420	5106.87	2544.19	-2543.84	-45.76	1724729.24	245700.20	1.64	
7346.00	91.260	177.670	5106.12	2569.13	-2568.81	-44.91	1724730.09	245675.23	4.78	
7441.00	93.850	179.320	5101.89	2663.90	-2663.67	-42.41	1724732.59	245580.37	3.23	
7536.00	93.640	180.580	5095.68	2758.67	-2758.47	-42.33	1724732.67	245485.58	1.34	
7631.00	93.020	181.900	5090.16	2853.50	-2853.28	-44.38	1724730.62	245390.76	1.53	
7726.00	92.070	182.740	5085.94	2948.40	-2948.11	-48.23	1724726.77	245295.94	1.33	
7821.00	92.250	182.580	5082.36	3043.31	-3042.94	-52.63	1724722.37	245201.11	0.25	
7916.00	90.800	182.720	5079.83	3138.25	-3137.80	-57.02	1724717.98	245106.25	1.53	
8011.00	90.680	182.280	5078.61	3233.22	-3232.70	-61.17	1724713.83	245011.35	0.48	
8106.00	89.780	181.160	5078.23	3328.22	-3327.66	-64.02	1724710.98	244916.40	1.51	
8201.00	90.740	181.730	5077.80	3423.22	-3422.62	-66.41	1724708.59	244821.43	1.18	
8296.00	92.860	182.790	5074.81	3518.15	-3517.50	-70.16	1724704.84	244726.56	2.49	
8391.00	92.900	182.480	5070.04	3613.01	-3612.28	-74.52	1724700.48	244631.78	0.33	



Actual Wellpath Report

Sandridge Bennett 3120 1-13H_Final Surveys.
Page n of nn



REFERENCE WELLPATH IDENTIFICATION			
Operator	Sandridge Energy	Slot	Bennett 3120 1-13H SL 200 FNL 1980 FWL
Area	Kansas	Well	Subject
Field	Comanche County, Kansas (Sandridge Energy) NAD27 / Grid	Wellbore	Bennett 3120 1-13H Actual
Facility	Bennett 3120 1-13H Sec. 13/24- 31S- 20W		

WELLPATH DATA (102 stations)										
MD [ft]	Inclination [°]	Azimuth [°]	TVD [ft]	Vert Sect [ft]	North [ft]	East [ft]	Grid East [US ft]	Grid North [US ft]	DLS [°/100ft]	Comments
8485.00	92.060	182.980	5065.97	3706.90	-3706.08	-78.99	1724696.01	244537.98	1.04	
8580.00	92.130	182.640	5062.50	3801.81	-3800.90	-83.65	1724691.36	244443.16	0.37	
8675.00	92.400	182.670	5058.74	3896.71	-3895.73	-88.04	1724686.96	244348.34	0.29	
8770.00	90.890	181.540	5056.02	3991.66	-3990.62	-91.53	1724683.47	244253.45	1.98	
8865.00	91.350	181.480	5054.16	4086.64	-4085.57	-94.03	1724680.97	244158.50	0.49	
8960.00	91.020	181.900	5052.19	4181.62	-4180.51	-96.83	1724678.17	244063.56	0.56	
9055.00	91.660	181.460	5049.97	4276.59	-4275.44	-99.62	1724675.38	243968.63	0.82	
9150.00	92.660	180.460	5046.39	4371.52	-4370.35	-101.21	1724673.79	243873.72	1.49	
9245.00	91.730	181.630	5042.75	4466.45	-4465.27	-102.94	1724672.06	243778.81	1.57	
9340.00	89.290	179.990	5041.91	4561.43	-4560.24	-104.28	1724670.72	243683.83	3.09	
9372.00	88.430	180.020	5042.54	4593.41	-4592.24	-104.29	1724670.71	243651.84	2.69	
9420.00	88.430	180.020	5043.86	4641.38	-4640.22	-104.30	1724670.70	243603.86	0.00	Actual BHL 9420 MD (5044 TVD) X:1724671 Y:243604 VS:4641 2202 FNL 1990 FWL

WELLPATH COMPOSITION - Ref Wellbore: Bennett 3120 1-13H Actual Ref Wellpath: AWP (Final)				
Start MD [ft]	End MD [ft]	Positional Uncertainty Model	Log Name/Comment	Wellbore
20.00	768.00	EMS (Standard)	RIG Surveys	Bennett 3120 1-13H Actual
768.00	9372.00	NaviTrak (Standard)	INTEQ MWD	Bennett 3120 1-13H Actual
9372.00	9420.00	Blind Drilling (std)	Projection to bit	Bennett 3120 1-13H Actual