



DRILL STEM TEST REPORT

Prepared For: **Bennett & Schulte Oil Co.**

140 W Wichita Ave
Russell KS 67665

ATTN: Frank Schulte

Klusner #28-11

28-15s-12w Russell,KS

Start Date: 2013.04.26 @ 19:42:00

End Date: 2013.04.27 @ 00:56:00

Job Ticket #: 50287 DST #: 1

Trilobite Testing, Inc
PO Box 362 Hays, KS 67601
ph: 785-625-4778 fax: 785-625-5620

Printed: 2013.11.01 @ 12:23:43



**TRILOBITE
TESTING, INC.**

DRILL STEM TEST REPORT

Bennett & Schulte Oil Co.

28-15s-12w Russell, KS

140 W Wichita Ave
Russell KS 67665

Klusner #28-11

Job Ticket: 50287

DST#: 1

ATTN: Frank Schulte

Test Start: 2013.04.26 @ 19:42:00

GENERAL INFORMATION:

Formation: **Arbuckle**

Deviated: No Whipstock: ft (KB)

Time Tool Opened: 21:47:00

Time Test Ended: 00:56:00

Test Type: Conventional Bottom Hole (Initial)

Tester: Brett Dickinson/Dani

Unit No: 59

Interval: 3244.00 ft (KB) To 3274.00 ft (KB) (TVD)

Reference Elevations: 1822.00 ft (KB)

Total Depth: 3274.00 ft (KB) (TVD)

1815.00 ft (CF)

Hole Diameter: 7.88 inches Hole Condition: Fair

KB to GR/CF: 7.00 ft

Serial #: 8319 Outside

Press @ Run Depth: 648.82 psig @ 3245.00 ft (KB)

Capacity: 8000.00 psig

Start Date: 2013.04.26

End Date:

2013.04.27

Last Calib.:

2013.04.27

Start Time:

19:42:05

End Time:

00:55:59

Time On Btm:

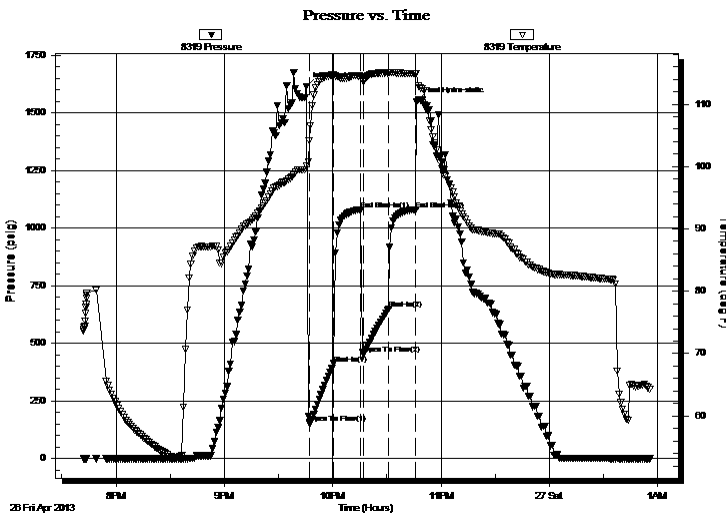
2013.04.26 @ 21:45:30

Time Off Btm:

2013.04.26 @ 22:46:30

TEST COMMENT: If-BOB in 45 sec
ISI-Very weak surface blow
FF-BOB in 1 min
FSI-No blow

PRESSURE SUMMARY



Time (Min.)	Pressure (psig)	Temp (deg F)	Annotation
0	1615.26	100.08	Initial Hydro-static
2	153.09	104.20	Open To Flow (1)
15	411.63	114.71	Shut-In(1)
30	1081.36	114.46	End Shut-In(1)
32	453.09	113.60	Open To Flow (2)
46	648.82	115.03	Shut-In(2)
61	1081.57	114.94	End Shut-In(2)
61	1548.18	114.92	Final Hydro-static

Recovery

Length (ft)	Description	Volume (bbl)
185.00	VSGOWCM 5%G 20%O 35%W 40%M	2.60
370.00	SGMOCW 10%G 20%O 60%W 10%M	5.19
185.00	SGOCW 10%G 20%O 70%W	2.60
60.00	VSOW 5%O 95%W	0.84
185.00	SGOCW 5%G 10%O 85%W	2.60
430.00	Water	6.03

Gas Rates

Choke (inches)	Pressure (psig)	Gas Rate (Mcf/d)



**TRILOBITE
TESTING, INC.**

DRILL STEM TEST REPORT

TOOL DIAGRAM

Bennett & Schulte Oil Co.

28-15s-12w Russell, KS

140 W Wichita Ave
Russell KS 67665

Klusner #28-11

Job Ticket: 50287

DST#: 1

ATTN: Frank Schulte

Test Start: 2013.04.26 @ 19:42:00

Tool Information

Drill Pipe:	Length: 3226.00 ft	Diameter: 3.80 inches	Volume: 45.25 bbl	Tool Weight: 2500.00 lb
Heavy Wt. Pipe:	Length: 0.00 ft	Diameter: 2.70 inches	Volume: 0.00 bbl	Weight set on Packer: 25000.00 lb
Drill Collar:	Length: 0.00 ft	Diameter: 2.25 inches	Volume: 0.00 bbl	Weight to Pull Loose: 35000.00 lb
			<u>Total Volume: 45.25 bbl</u>	Tool Chased 0.00 ft
Drill Pipe Above KB:	10.00 ft			String Weight: Initial 31000.00 lb
Depth to Top Packer:	3244.00 ft			Final 35000.00 lb
Depth to Bottom Packer:	ft			
Interval between Packers:	30.00 ft			
Tool Length:	58.00 ft			
Number of Packers:	2	Diameter: 6.75 inches		

Tool Comments:

Tool Description

Tool Description	Length (ft)	Serial No.	Position	Depth (ft)	Accum. Lengths
Change Over Sub	1.00			3217.00	
Shut In Tool	5.00			3222.00	
Hydraulic tool	5.00			3227.00	
Jars	5.00			3232.00	
Safety Joint	2.00			3234.00	
Packer	5.00			3239.00	28.00 Bottom Of Top Packer
Packer	5.00			3244.00	
Stubb	1.00			3245.00	
Recorder	0.00	8166	Inside	3245.00	
Recorder	0.00	8319	Outside	3245.00	
Perforations	26.00			3271.00	
Bullnose	3.00			3274.00	30.00 Bottom Packers & Anchor

Total Tool Length: 58.00



**TRILOBITE
TESTING, INC.**

DRILL STEM TEST REPORT

FLUID SUMMARY

Bennett & Schulte Oil Co.

28-15s-12w Russell,KS

140 W Wichita Ave
Russell KS 67665

Klusner #28-11

Job Ticket: 50287

DST#: 1

ATTN: Frank Schulte

Test Start: 2013.04.26 @ 19:42:00

Mud and Cushion Information

Mud Type: Gel Chem

Cushion Type:

Oil API:

deg API

Mud Weight: 9.00 lb/gal

Cushion Length:

ft

Water Salinity:

ppm

Viscosity: 62.00 sec/qt

Cushion Volume:

bbbl

Water Loss: 7.99 in³

Gas Cushion Type:

Resistivity: ohm.m

Gas Cushion Pressure:

psig

Salinity: 2000.00 ppm

Filter Cake: inches

Recovery Information

Recovery Table

Length ft	Description	Volume bbl
185.00	VSGOWCM 5%G 20%O 35%W 40%M	2.595
370.00	SGMOCW 10%G 20%O 60%W 10%M	5.190
185.00	SGOCW 10%G 20%O 70%W	2.595
60.00	VSOW 5%O 95%W	0.842
185.00	SGOCW 5%G 10%O 85%W	2.595
430.00	Water	6.032

Total Length: 1415.00 ft

Total Volume: 19.849 bbl

Num Fluid Samples: 0

Num Gas Bombs: 0

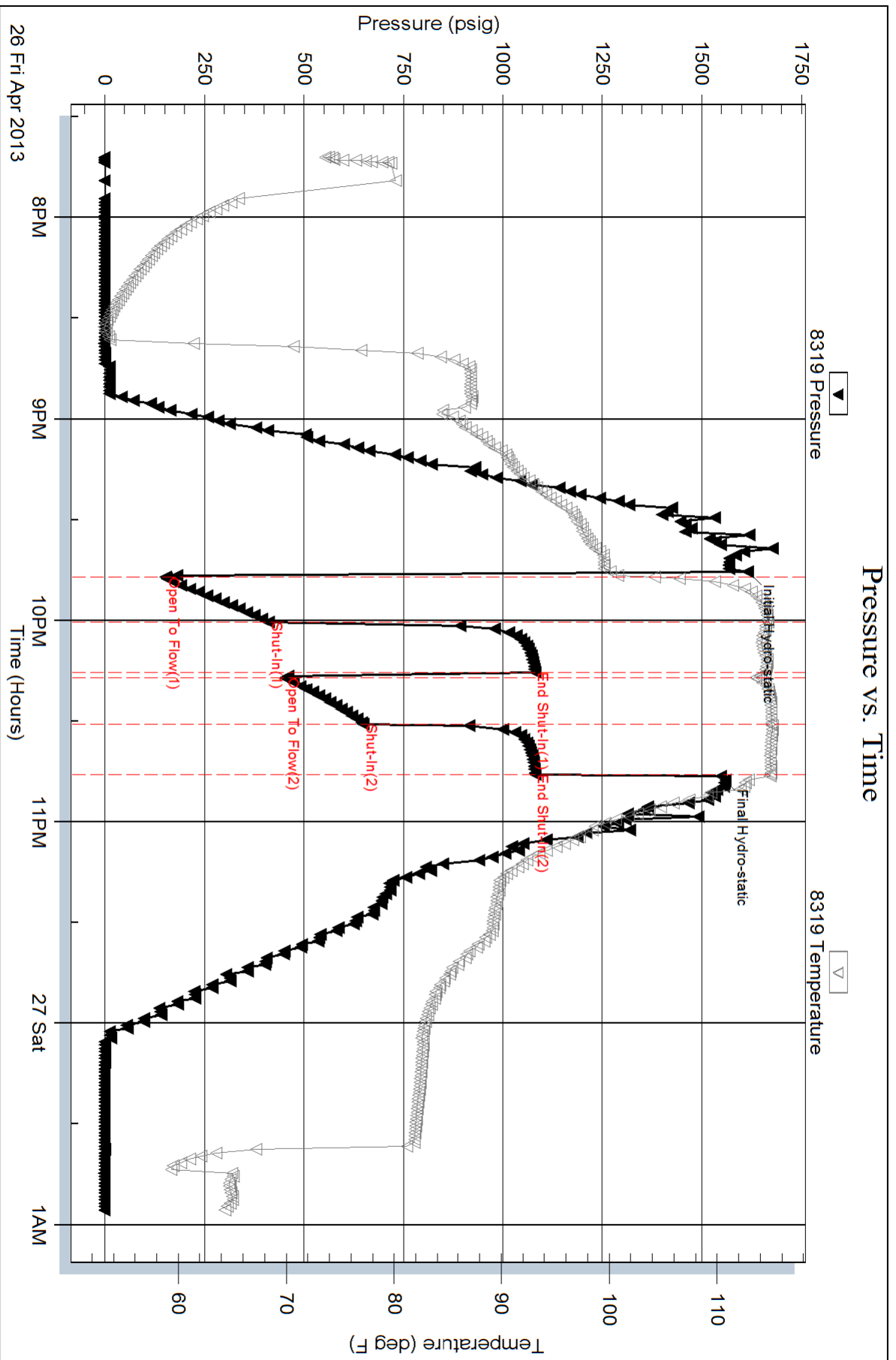
Serial #:

Laboratory Name:

Laboratory Location:

Recovery Comments:

Pressure vs. Time



Serial #: 8166

Inside

Bennett & Schulte Oil Co.

Kusner #28-11

DST Test Number: 1

