



## DRILL STEM TEST REPORT

Prepared For: **GLM Company**

PO Box 193  
Russell, Kansas 67665+0193

ATTN: Jeff Lawler

**Rohr #3**

**18/14S/18W/Ellis**

Start Date: 2013.04.30 @ 09:15:00

End Date: 2013.04.30 @ 13:43:30

Job Ticket #: 17488                      DST #: 4

Superior Testers Enterprises LLC  
PO Box 138 Great Bend KS 67530  
1-800-792-6902

Printed: 2013.04.30 @ 14:00:10

GLM Company  
18/14S/18W/Ellis  
Rohr #3  
DST # 4  
Arbuckle  
2013.04.30



# DRILL STEM TEST REPORT

GLM Company  
 PO Box 193  
 Russell, Kansas 67665-0193  
 ATTN: Jeff Lawler

**18/14S/18W/Ellis**  
**Rohr #3**  
 Job Ticket: 17488 **DST#: 4**  
 Test Start: 2013.04.30 @ 09:15:00

## GENERAL INFORMATION:

Formation: **Arbuckle**  
 Deviated: No Whipstock: ft (KB)  
 Test Type: Conventional Bottom Hole (Initial)  
 Time Tool Opened: 10:36:30 Tester: Ken Swinney  
 Time Test Ended: 13:43:30 Unit No: 3325 Hays/10  
**Interval: 3640.00 ft (KB) To 3717.00 ft (KB) (TVD)**  
 Reference Elevations: 2095.00 ft (KB)  
 Total Depth: 3717.00 ft (KB) (TVD) 2089.00 ft (CF)  
 Hole Diameter: 7.80 inches Hole Condition: Fair KB to GR/CF: 6.00 ft

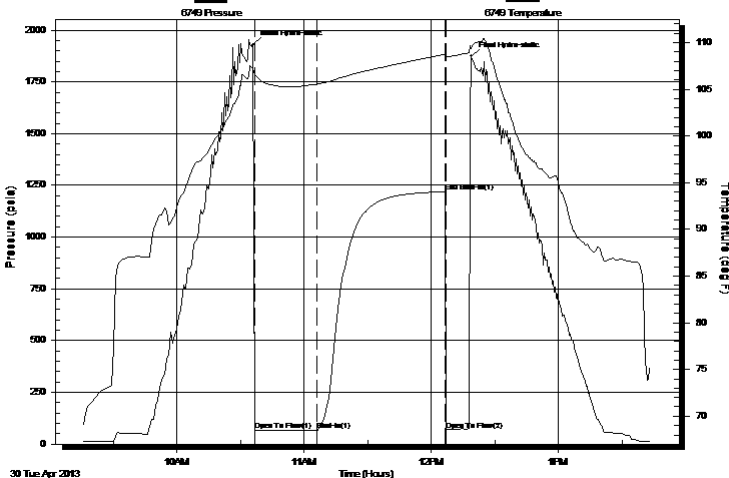
## Serial #: 6749

Inside

Press @ Run Depth: 67.91 psia @ 3712.57 ft (KB) Capacity: 5000.00 psia  
 Start Date: 2013.04.30 End Date: 2013.04.30 Last Calib.: 2013.04.30  
 Start Time: 09:15:00 End Time: 13:43:30 Time On Btm: 2013.04.30 @ 10:36:00  
 Time Off Btm: 2013.04.30 @ 12:19:00

**TEST COMMENT:** 1ST Open 30 Minutes/Weak blow/Blow built to 1/2 inch then died in 12 minutes  
 1ST Shut In 60 Minutes/No blow back  
 2ND Open 15 Minutes/Weak surface blow died in 5 minutes/Flush tool/Weak surface blow died in 3 minutes/Pull test

Pressure vs. Time



## PRESSURE SUMMARY

Time (Min.)	Pressure (psia)	Temp (deg F)	Annotation
0	1928.09	107.18	Initial Hydro-static
1	66.77	106.61	Open To Flow (1)
30	67.91	105.55	Shut-In(1)
91	1219.23	108.76	End Shut-In(1)
91	68.31	108.50	Open To Flow (2)
103	1873.06	109.38	Final Hydro-static

## Recovery

Length (ft)	Description	Volume (bbl)
7.00	Clean Oil 100%	0.10
23.00	Emulsified Oil cut Mud	0.32
0.00	Emulsified Oil 5% Mud 95%	0.00

## Gas Rates

	Choke (inches)	Pressure (psia)	Gas Rate (Mcf/d)





# DRILL STEM TEST REPORT

**TOOL DIAGRAM**

GLM Company  
 PO Box 193  
 Russell, Kansas 67665+0193  
 ATTN: Jeff Lawler

**18/14S/18W/Ellis**  
**Rohr #3**  
 Job Ticket: 17488      **DST#: 4**  
 Test Start: 2013.04.30 @ 09:15:00

**Tool Information**

Drill Pipe:	Length: 3647.00 ft	Diameter: 3.80 inches	Volume: 51.16 bbl	Tool Weight: 2000.00 lb
Heavy Wt. Pipe:	Length: 0.00 ft	Diameter: 0.00 inches	Volume: 0.00 bbl	Weight set on Packer: 20000.00 lb
Drill Collar:	Length: 0.00 ft	Diameter: 0.00 inches	Volume: 0.00 bbl	Weight to Pull Loose: 64000.00 lb
			<u>Total Volume: 51.16 bbl</u>	Tool Chased 0.00 ft
Drill Pipe Above KB:	27.00 ft			String Weight: Initial 58000.00 lb
Depth to Top Packer:	3640.00 ft			Final 58000.00 lb
Depth to Bottom Packer:	ft			
Interval between Packers:	76.57 ft			
Tool Length:	96.57 ft			
Number of Packers:	2	Diameter: 6.75 inches		

Tool Comments:

<b>Tool Description</b>	<b>Length (ft)</b>	<b>Serial No.</b>	<b>Position</b>	<b>Depth (ft)</b>	<b>Accum. Lengths</b>
-------------------------	--------------------	-------------------	-----------------	-------------------	-----------------------

Shut In Tool	5.00			3625.00	
Hydraulic Tool	5.00			3630.00	
Packer	5.00			3635.00	20.00      Bottom Of Top Packer
Packer	5.00			3640.00	
Perforations	5.00			3645.00	
Change Over Sub	0.75			3645.75	
Drill Pipe	32.07			3677.82	
Change Over Sub	0.75			3678.57	
Anchor	33.00			3711.57	
Recorder	1.00	6749	Inside	3712.57	
Recorder	1.00	6838	Outside	3713.57	
Bullnose	3.00			3716.57	76.57      Bottom Packers & Anchor

**Total Tool Length: 96.57**



# DRILL STEM TEST REPORT

## FLUID SUMMARY

GLM Company  
PO Box 193  
Russell, Kansas 67665+0193  
ATTN: Jeff Lawler

**18/14S/18W/Ellis**  
**Rohr #3**  
Job Ticket: 17488      **DST#: 4**  
Test Start: 2013.04.30 @ 09:15:00

### Mud and Cushion Information

Mud Type:	Gel Chem	Cushion Type:		Oil API:	deg API
Mud Weight:	9.00 lb/gal	Cushion Length:	ft	Water Salinity:	ppm
Viscosity:	52.00 sec/qt	Cushion Volume:	bbbl		
Water Loss:	8.00 in <sup>3</sup>	Gas Cushion Type:			
Resistivity:	ohm.m	Gas Cushion Pressure:	psia		
Salinity:	6000.00 ppm				
Filter Cake:	1.00 inches				

### Recovery Information

Recovery Table

Length ft	Description	Volume bbbl
7.00	Clean Oil 100%	0.098
23.00	Emulsified Oil cut Mud	0.323
0.00	Emulsified Oil 5% Mud 95%	0.000

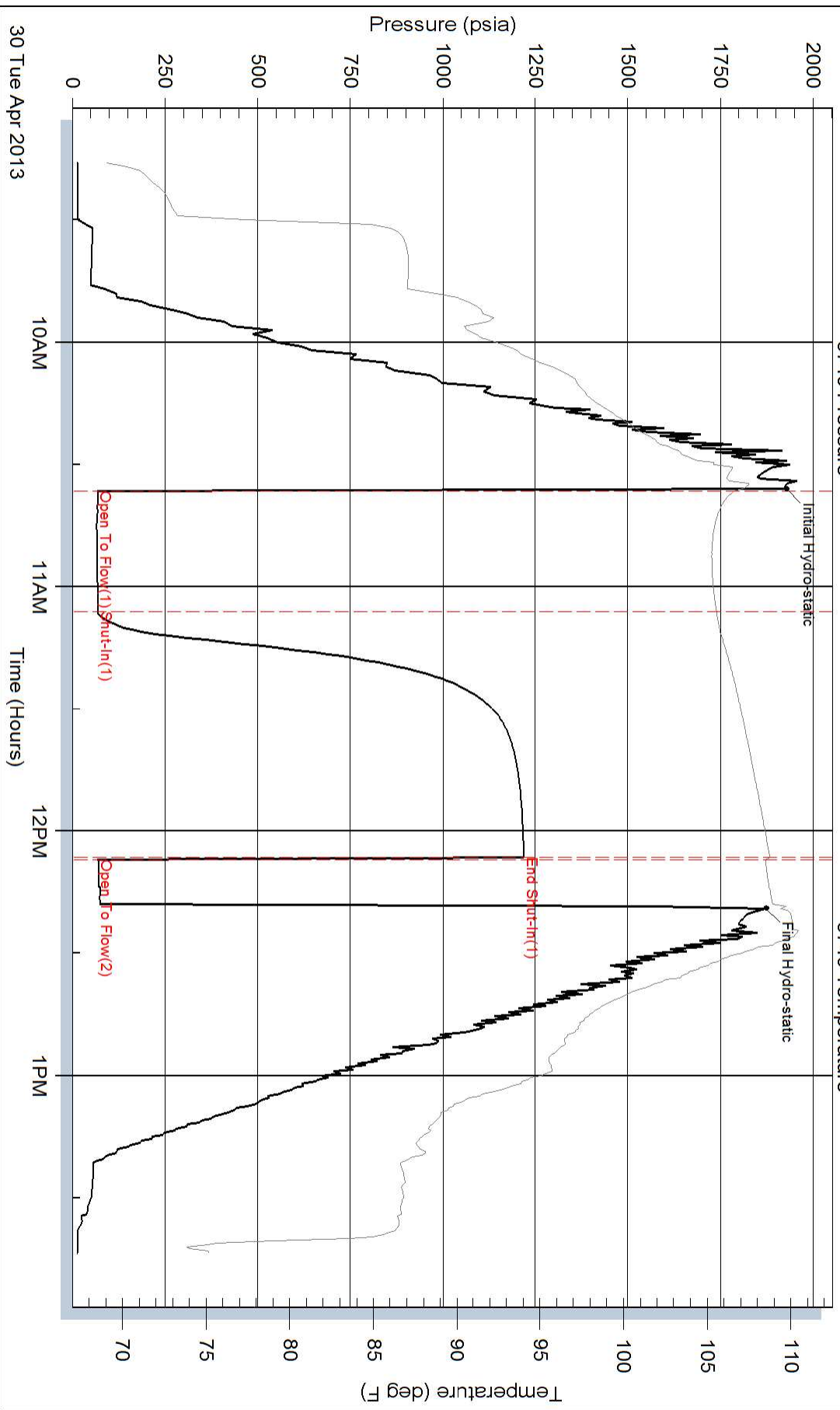
Total Length: 30.00 ft      Total Volume: 0.421 bbl

Num Fluid Samples: 0      Num Gas Bombs: 0      Serial #:

Laboratory Name:      Laboratory Location:

Recovery Comments:

### Pressure vs. Time



### Pressure vs. Time

