



Office
 620) 588-4250 212 Main St. • P.O. Box 215 • Clarin, KS 67525 (620) 58 3444
 James C. Musgrove
 Petroleum Geologist

GEOLOGIST'S REPORT

DRILLING TIME AND SAMPLE LOG

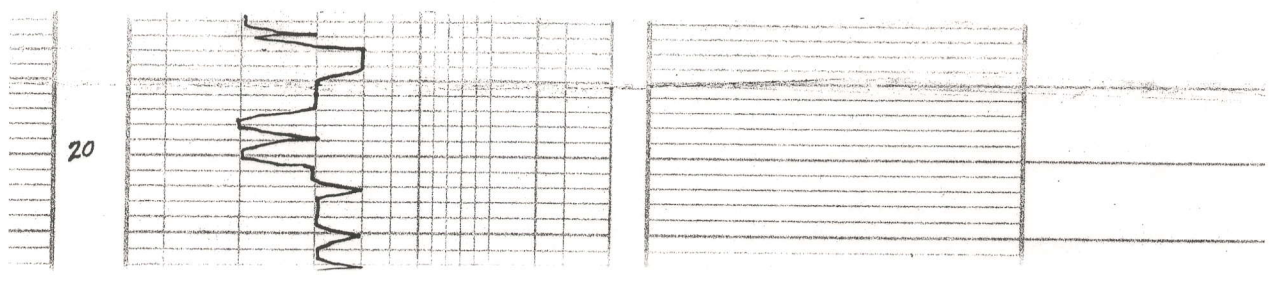
COMPANY John Roy Evans Oil Co. LLC ELEVATION: _____
 EASE Demek #2 KB 1876
 LEAD Kraft - Prusa DF _____
 LOCATION 5/2-SW-NW-NE (120' FNL, 2310' FELL) GL 1869
 EC 6 TWP 17S RGE 11W Measurements At: _____
 COUNTY Barton STATE Kansas From: KB
 CONTRACTOR Royal Drilling Co (Criff #2) SURFACE CASING _____
 PUD May 21, 2013 COMP May 28, 2013 PRODUCTION / Disposal 5 1/2"
 TD 3600 LTD no open hole log - ELECTRICAL SURFACES _____
 UD UP 2700 TYPE MUD Chemical Disposed By Pioneer
 AMPLS SAVED FROM 2800 TO _____
 DRILLING TIME KEPT FROM 2800 TO _____ RTD
 AMPLS EXAMINED FROM 2900 TO _____
 GEOLOGICAL SUPERVISION FROM 2900 TO _____
 GEOLOGIST ON WELL Jim Musgrove & Wyatt Urban
 FORMATION TOPS cased SAMPLES _____

FORMATION TOPS	(No open hole)	SAMPLES
anhydrite	737	+1139
base anhydrite	761	+1115
feelonet	2949	-1073
Toronto	2965	-1089
Douglas	2977	-1101
Brown lime	3048	-1172
Hansing	3066	-1190
Base Kansas City	3509	-1433
Crinoid	3320	-1444
	3321	-1444

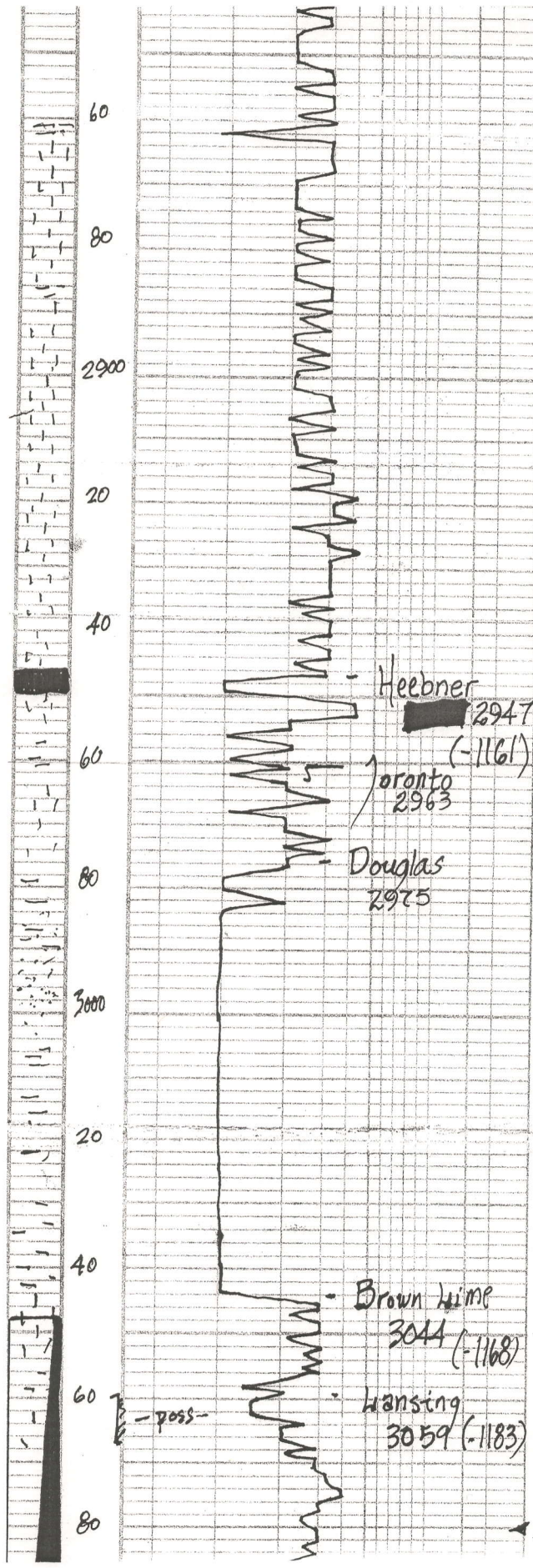
MARKS

5 1/2" production/disposal casing was set & cemented in the Demek #2.

Respectfully Submitted,
 James C. Musgrove
 Petroleum Geologist



20



~ blk carb. sh.

ls, gry, wh, frz, gran, sct pp, n/s

~

ls, wh/gry, slightly foss, gran, chiky n/s

~

aa + fr. gry foss A

~ blk carb. sh.

gry/wh, chiky + wh, chiky ls, poor, n/s

ls, wh, crm,

~ Slug mar/gry sh

~ Sand, gry/grysh green, Vsg, mica, sct, brown sh, fr. fo, no odor

~

aa.

~

mar/gry soft sh

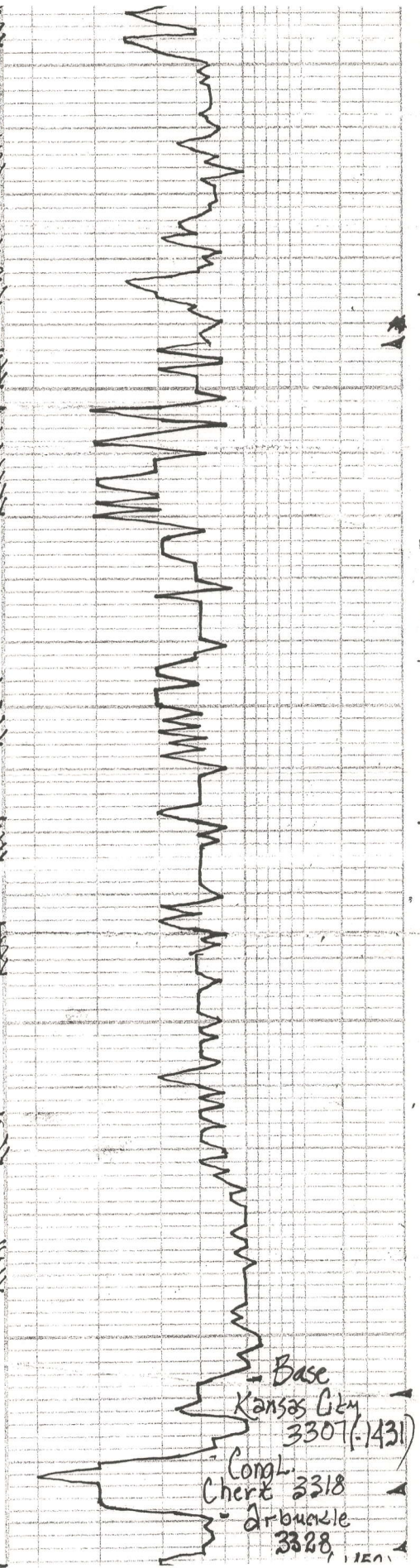
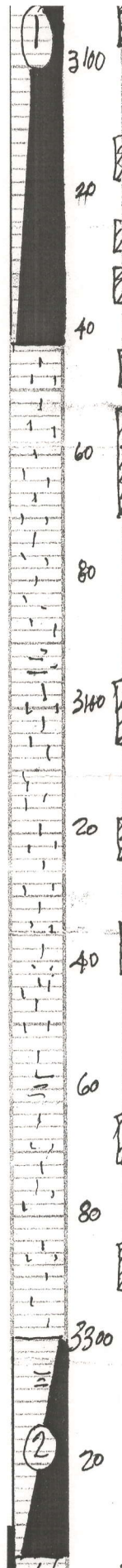
~ ls, tan, fr-w, chiky dense

~

~ (gry) mar sh.

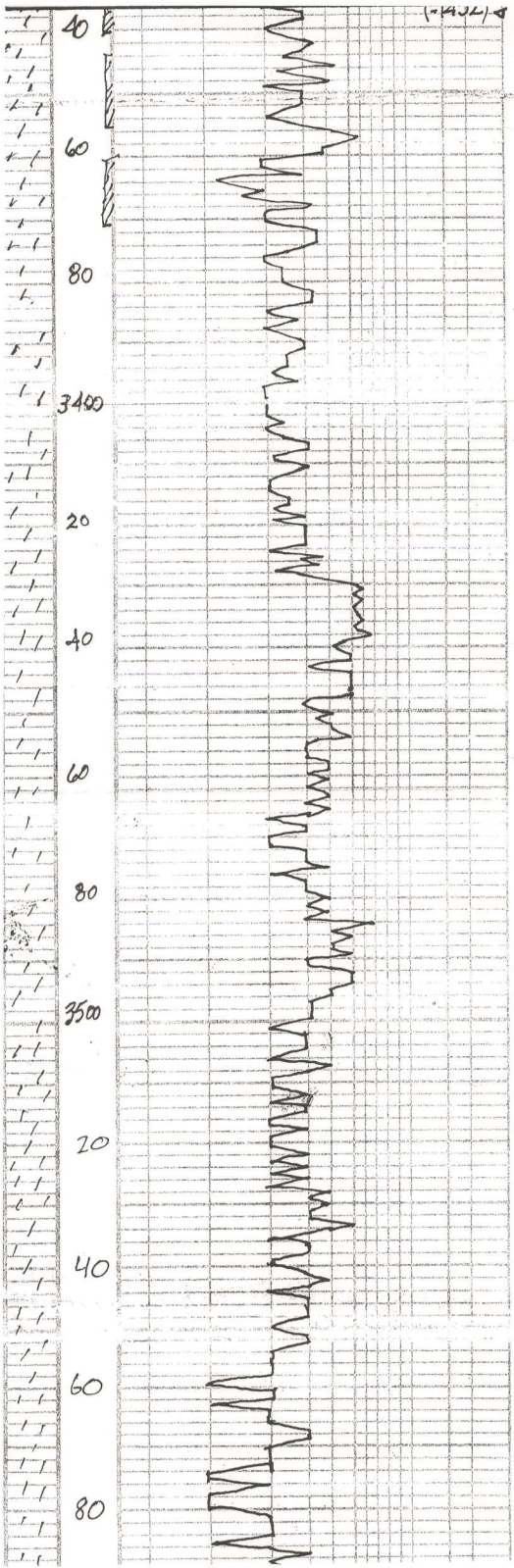
~ ls, gry, wh, chiky, poor, vis, fr brown sh, fr. fo, no odor, few foss

DST #1 3047-31
30-30-45-60
Blow string
(BOB 5 3/4 min)
2nd string
opening
(BOB 11 1/4 min)



~ ls, wh, gray, oom, f. poor str, f. fo, no odor
 ~ ls, gray, wh, f. x. h, Chiky
 f. poor str, f. fo, no odor
 ~ ls, crm/gray, f. nely ool, f. str, f. fo, no odor (Poor Show)
 ~ ls, wh/gray, oom, f. oom, Chiky n/s
 ~ ls, wh/gray, f. x. h, Chiky, f. str, f. fo, no odor (Poor v. s. g)
 ~ gray blk sh
 ~ ls, tan/gray, f. x. h, f. ool, f. str, f. fo, no odor (Cavities ???)
 ~ ls, wh/gray, f. x. h, ool, Chiky, f. poor dev. o. n/s
 ~ ls, gray, wh, oom, Chiky, f. poor str, f. fo, odor, (f. wh. Chiky)
 ~ gray, blk sh
 ~ ls, tan/brown, f. x. h, ool, slightly f. str, f. fo, no odor
 ~ ls, tan, med x. h, Chiky, f. poor str
 ~ v. g. sh + f. wh. Chik.
 ~ ls, wh/crm, gray, med x. h, f. str, f. fo, no odor, fresh n/s
 ~ dol, wh/crm, med x. h, f. str, f. fo, no odor

113' slightly oil cut muddy u (2% oil, 28% wst 70% mud)
 315' muddy water pressures
 ISI P 564
 ISI P 570
 ISI P 18-108
 ISI P 117-203
 NISU
 1423-1418
 DST # 2 3300 -3:
 30-30-45-45
 Blow; Strong (Bob)
 2nd opening; Strong (Bob 45 mins)
 Rec; 177' clean oil
 63' muddy oil



dol, ss; sen/sfo, odor
 dol, wh/gm, med XL, sandy,
 fr. s.s. & g.; brown str, sfo,
 odor.
 ~ ~
 crs, sandy in part; fr.
 fr. s.s. & g.
 ~ ~
 med wh chlk { f.c. } s

dol, crm/wh, med XL,
 sandy f wh, tan, vfg, sand
 ~ ~
 + aia
 ~ ~
 wh/gm, vfg, sandy dolomite
 + gm, fr XL dolomite (denx)
 f gm Δ

Dol, wh/crm, mxl, sandy,
 + gr/smokey Δ

Dol, wh/crm, m-fxl, sandy,
 trc, pyrite, fr Δ wh

Dol, wh/crm, fxl, sandy,
 vfg, trc ccm, wh qtz

Dol wh vfg, sandy, + qtz, clc,
 wh

Dol wh, gry, v. sandy, f grain
 trc, qtz, f lt green shale sff

Dol wh, gry, fxl, f. grain sandy
 trc, qtz, smokey, clc

Dol wh, sandy, f grain, f qtz
 clc, trc, biotite, heavily fract
 f trc, smokey qtz

Qtz, clc, heavily fract., trc biotite,
 f qtz, red/or, fr well par, few fract.

PRESSURES ISIP 676
 ISIP 582
 ISIP 12-60
 ISIP 62-91
 ISIP
 1575-156

DST # 3 3330 .334
 30-30-45-45
 Blow string (BOB 2 1/2
 and opening string (BOB 5 m
 Rec) 20' gas in pipe
 118' clean oil
 126' oil/gas MW
 (8% gas, 35% oil, 37%
 20% mud)
 189' SOG GW
 (57% oil, 30% water,
 50' water 590
 pressures:

ISIP 759 PSI
 ISIP 685 "
 ISIP 44-266 "
 ISIP 279-428 "
 ISIP
 1575-1579

