



## TEMPORARY ABANDONMENT WELL APPLICATION

OPERATOR: License# \_\_\_\_\_  
 Name: \_\_\_\_\_  
 Address 1: \_\_\_\_\_  
 Address 2: \_\_\_\_\_  
 City: \_\_\_\_\_ State: \_\_\_\_\_ Zip: \_\_\_\_\_ + \_\_\_\_\_  
 Contact Person: \_\_\_\_\_  
 Phone: ( \_\_\_\_\_ ) \_\_\_\_\_  
 Contact Person Email: \_\_\_\_\_  
 Field Contact Person: \_\_\_\_\_  
 Field Contact Person Phone: ( \_\_\_\_\_ ) \_\_\_\_\_

API No. 15- \_\_\_\_\_  
 Spot Description: \_\_\_\_\_  
 \_\_\_\_\_ - \_\_\_\_\_ - \_\_\_\_\_ - \_\_\_\_\_ Sec. \_\_\_\_\_ Twp. \_\_\_\_\_ S. R. \_\_\_\_\_  E  W  
 \_\_\_\_\_ feet from  N /  S Line of Section  
 \_\_\_\_\_ feet from  E /  W Line of Section  
 GPS Location: Lat: \_\_\_\_\_, Long: \_\_\_\_\_  
(e.g. xx.xxxxx) (e.g. -xxx.xxxxx)  
 Datum:  NAD27  NAD83  WGS84  
 County: \_\_\_\_\_ Elevation: \_\_\_\_\_  GL  KB  
 Lease Name: \_\_\_\_\_ Well #: \_\_\_\_\_  
 Well Type: (check one)  Oil  Gas  OG  WSW  Other: \_\_\_\_\_  
 SWD Permit #: \_\_\_\_\_  ENHR Permit #: \_\_\_\_\_  
 Gas Storage Permit #: \_\_\_\_\_  
 Spud Date: \_\_\_\_\_ Date Shut-In: \_\_\_\_\_

	Conductor	Surface	Production	Intermediate	Liner	Tubing
Size						
Setting Depth						
Amount of Cement						
Top of Cement						
Bottom of Cement						

Casing Fluid Level from Surface: \_\_\_\_\_ How Determined? \_\_\_\_\_ Date: \_\_\_\_\_

Casing Squeeze(s): \_\_\_\_\_ to \_\_\_\_\_ w / \_\_\_\_\_ sacks of cement, \_\_\_\_\_ to \_\_\_\_\_ w / \_\_\_\_\_ sacks of cement. Date: \_\_\_\_\_  
(top) (bottom) (top) (bottom)

Do you have a valid Oil & Gas Lease?  Yes  No

Depth and Type:  Junk in Hole at \_\_\_\_\_  Tools in Hole at \_\_\_\_\_ Casing Leaks:  Yes  No Depth of casing leak(s): \_\_\_\_\_  
(depth) (depth)

Type Completion:  ALT. I  ALT. II Depth of:  DV Tool: \_\_\_\_\_ w / \_\_\_\_\_ sacks of cement  Port Collar: \_\_\_\_\_ w / \_\_\_\_\_ sack of cement  
(depth) (depth)

Packer Type: \_\_\_\_\_ Size: \_\_\_\_\_ Inch Set at: \_\_\_\_\_ Feet

Total Depth: \_\_\_\_\_ Plug Back Depth: \_\_\_\_\_ Plug Back Method: \_\_\_\_\_

**Geological Data:**

Formation Name	Formation Top	Formation Base	Completion Information
1. _____	At: _____	to _____ Feet	Perforation Interval _____ to _____ Feet or Open Hole Interval _____ to _____ Feet
2. _____	At: _____	to _____ Feet	Perforation Interval _____ to _____ Feet or Open Hole Interval _____ to _____ Feet

UNDER PENALTY OF PERJURY I HEREBY ATTEST THAT THE INFORMATION CONTAINED HEREIN IS TRUE AND CORRECT TO THE BEST OF MY KNOWLEDGE

### Submitted Electronically

<b>Do NOT Write in This Space - KCC USE ONLY</b>	Date Tested: _____	Results: _____	Date Plugged: _____	Date Repaired: _____	Date Put Back in Service: _____
	Review Completed by: _____ Comments: _____				
TA Approved: <input type="checkbox"/> Yes <input type="checkbox"/> Denied Date: _____					

**Mail to the Appropriate KCC Conservation Office:**

	KCC District Office #1 - 210 E. Frontview, Suite A, Dodge City, KS 67801	Phone 620.225.8888
	KCC District Office #2 / UPGS - 3450 N. Rock Road, Building 600, Suite 601, Wichita, KS 67226	Phone 316.630.4000
	KCC District Office #3 - 1500 SW Seventh Steet, Chanute, KS 66720	Phone 620.432.2300
	KCC District Office #4 - 2301 E. 13th Street, Hays, KS 67601-2651	Phone 785.625.0550

Conservation Division  
District Office No. 2  
3450 N. Rock Road  
Building 600, Suite 601  
Wichita, KS 67226



Phone: 316-630-4000  
Fax: 316-630-4005  
<http://kcc.ks.gov/>

Mark Sievers, Chairman  
Thomas E. Wright, Commissioner  
Shari Feist Albrecht, Commissioner

Sam Brownback, Governor

May 21, 2013

Damonica Pierson  
Shell Gulf of Mexico Inc.  
150 N DAIRY-ASHFORD (77079)  
PO BOX 576 (77001-0576)  
HOUSTON, TX 77001-0576

Re: Temporary Abandonment  
API 15-077-21825-01-00  
PARSONS TRUST 3207 11-2H  
NW/4 Sec.11-32S-07W  
Harper County, Kansas

Dear Damonica Pierson:

Your temporary abandonment (TA) application for the well listed above has been approved. In accordance with K.A.R. 82-3-111 the TA status of this well will expire 05/21/2014.

- \* If you return this well to service or plug it, please notify the District Office.
- \* If you sell this well you are required to file a Transfer of Operator form, T-1.
- \* If the well will remain temporarily abandoned, you must submit a new TA application, CP-111, before 05/21/2014.

You may contact me at the number below if you have questions.

Very truly yours,

Jeff Klock, District 2 Supervisor

## SHELL GULF OF MEXICO, INC. (34574)

## PARSONS TRUST 3207 11

**PETE MARTIN DRILLING (34645)**  
 (SET THE CONDUCTOR)

2-H conductor

2-H mouse Hole

Call in DATE OF SPUD

4/18/2012

spud in date

4/19/2012

4/22/2012

T.D date

4/19 12

4/22/2012

Size Hole Drilled

26"

20"

Size Casing Set (in O.D )

18"

14"

conductor wall thickness

.250

.188

Weight Lbs./Ft.

47.76ppf

27.76

Setting Depth

59'

78'

Type of Cement

Type 1\2 Portland cement

Type 1\2 Portland cement

Cubic yards of cement

8cy

5cy

2500 PSI Grout Mix

yes

yes

Type and Percent of Additives

15%fly ash

15% fly ash

Comments

0-3' dirt 3'-40' clay 40'-59 sand  
water@25'0-3' dirt 3'-40' red clay 40'-  
56'sand 56'-62' gray clay 62'-78'  
red clay water@25'



### Shell E&P Company

200 North Dairy Ashford  
Houston, Texas USA 77079

Lease :	Parsons Trust 3207 11-2H	Casing									
API No:	15-077-21825-01-00	Size	Weight	Grade	Thread	Depth (ft)	ID (in)	Drift	Collapse	Burst	BBL/Ft
KB :	21.00'	9 5/8"	36.0	J-55	STC	691	8.921	8.77"	2030	3523	0.0773
GL:	1424'	7"	23.0	L-80	DWC	4620	6.366	6.241"	3829	6338	0.0394
Legals :	Sec 11, T 32S, R 07W	4.5"	11.6	P-110	LTC	4152-9607	4.000	3.877"	7569	10687	0.0155
	990' FWL, 360' FNL										
County:	Harper										
State:	KS	Tubing									
		Size	Weight	Grade	Thread	Depth	ID	Drift	Collapse	Burst	BBL/Ft
Latitude:	37.281817										
Longitude:	-98.054047										

### Proposed TA

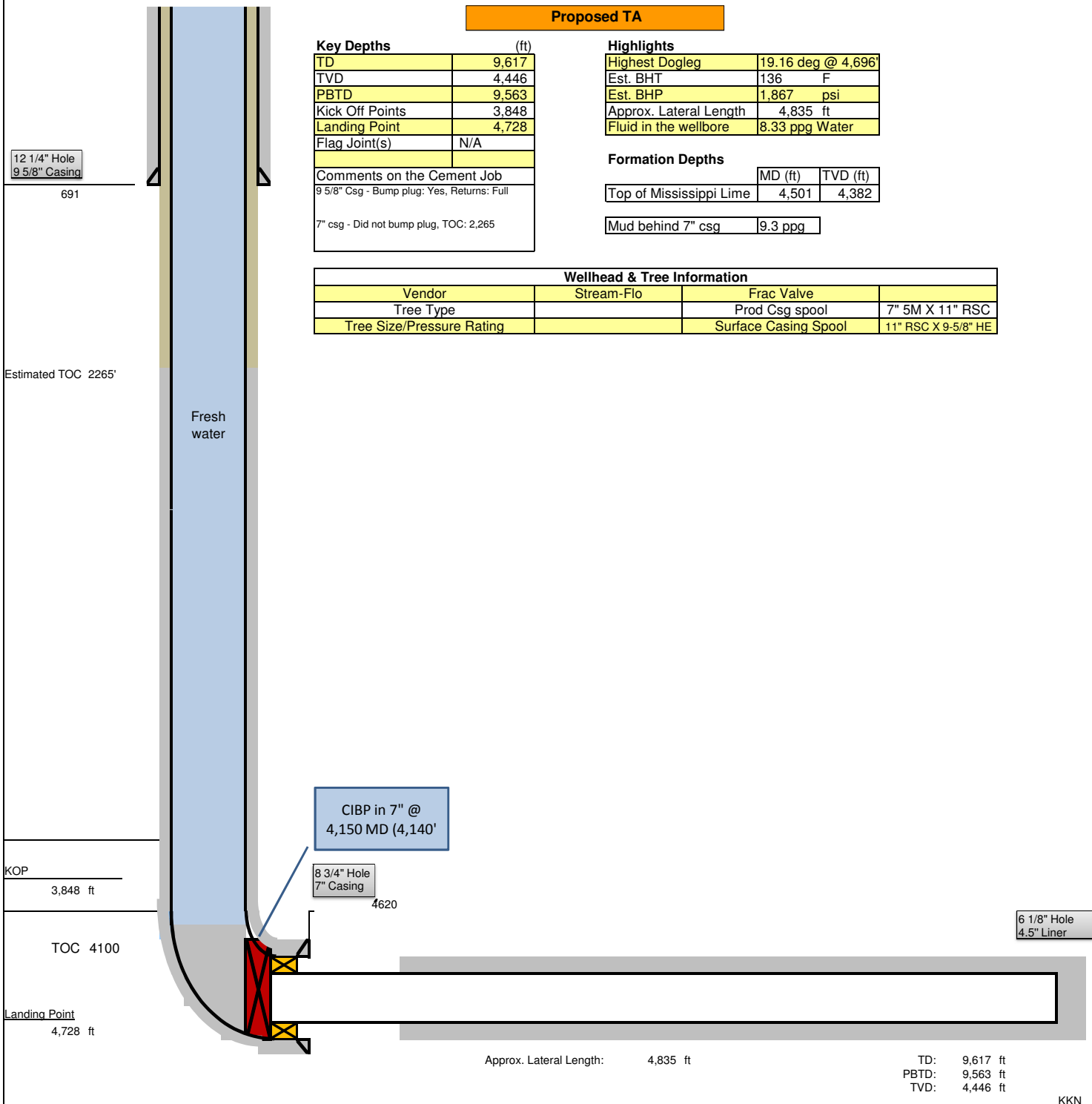
Key Depths	(ft)
TD	9,617
TVD	4,446
PBTD	9,563
Kick Off Points	3,848
Landing Point	4,728
Flag Joint(s)	N/A

Highlights	
Highest Dogleg	19.16 deg @ 4,696'
Est. BHT	136 F
Est. BHP	1,867 psi
Approx. Lateral Length	4,835 ft
Fluid in the wellbore	8.33 ppg Water

**Comments on the Cement Job**  
 9 5/8" Csg - Bump plug: Yes, Returns: Full  
 7" csg - Did not bump plug, TOC: 2,265

Formation Depths	MD (ft)	TVD (ft)
Top of Mississippi Lime	4,501	4,382
Mud behind 7" csg	9.3 ppg	

Wellhead & Tree Information			
Vendor	Stream-Flo	Frac Valve	
Tree Type		Prod Csg spool	7" 5M X 11" RSC
Tree Size/Pressure Rating		Surface Casing Spool	11" RSC X 9-5/8" HE



Estimated TOC 2265'

Fresh water

CIBP in 7" @ 4,150 MD (4,140')

8 3/4" Hole 7" Casing

6 1/8" Hole 4.5" Liner

KOP 3,848 ft  
 TOC 4100  
 Landing Point 4,728 ft

Approx. Lateral Length: 4,835 ft

TD: 9,617 ft  
 PBTD: 9,563 ft  
 TVD: 4,446 ft

## Summary of Changes

Lease Name and Number: PARSONS TRUST 3207 11-2H

API/Permit #: 15-077-21825-01-00

Doc ID: 1145897

Correction Number: 1

Field Name	Previous Value	New Value
Approved Date	05/21/2013	12/17/2013
Casing Fluid - Date	04/19/2012	10/21/2012
Casing Fluid - How Determined	N/A	Visual Inspection
Date Shut-In	04/19/2012	10/23/2012
GPS Datum		NAD27
GPS Latitude		37.281817
GPS Longitude		-98.053994
Intermediate Amount Of Cement	0	185
Intermediate Bottom Of Cement	0	4624
Intermediate Setting Depth	0	4624
Intermediate Size	0	7

Summary of changes for correction 1 continued

Field Name	Previous Value	New Value
Intermediate Top Of Cement	0	2265
Liner Amount Of Cement	0	435
Liner Bottom Of Cement	0	9607
Liner Setting Depth	0	9607
Liner Size	0	4.5
Liner Top Of Cement	0	4140
Save Link	../../kcc/detail/operatorEditDetail.cfm?docID=1139212	../../kcc/detail/operatorEditDetail.cfm?docID=1145897
Surface Amount Of Cement	0	340
Surface Bottom Of Cement	0	696
Surface Setting Depth	0	696
Surface Size	0	9.625
Total Depth	59	9617

## Summary of Attachments

Lease Name and Number: PARSONS TRUST 3207 11-2H

API: 15-077-21825-01-00

Doc ID: 1145897

Correction Number: 1

Attachment Name

Temporary Abandonment Approved

PARSONS TRUST 3207 #11-2H Conductor record

Parsons Trust 2H TA WBD