



**TEMPORARY ABANDONMENT WELL APPLICATION**

All blanks must be complete

OPERATOR: License# \_\_\_\_\_  
 Name: \_\_\_\_\_  
 Address 1: \_\_\_\_\_  
 Address 2: \_\_\_\_\_  
 City: \_\_\_\_\_ State: \_\_\_\_\_ Zip: \_\_\_\_\_ + \_\_\_\_\_  
 Contact Person: \_\_\_\_\_  
 Phone: ( \_\_\_\_\_ ) \_\_\_\_\_  
 Contact Person Email: \_\_\_\_\_  
 Field Contact Person: \_\_\_\_\_  
 Field Contact Person Phone: ( \_\_\_\_\_ ) \_\_\_\_\_

API No. 15- \_\_\_\_\_  
 Spot Description: \_\_\_\_\_  
 \_\_\_\_\_ - \_\_\_\_\_ - \_\_\_\_\_ - \_\_\_\_\_ Sec. \_\_\_\_\_ Twp. \_\_\_\_\_ S. R. \_\_\_\_\_  E  W  
 \_\_\_\_\_ feet from  N /  S Line of Section  
 \_\_\_\_\_ feet from  E /  W Line of Section  
 GPS Location: Lat: \_\_\_\_\_, Long: \_\_\_\_\_  
(e.g. xx.xxxxx) (e.g. -xxx.xxxxx)  
 Datum:  NAD27  NAD83  WGS84  
 County: \_\_\_\_\_ Elevation: \_\_\_\_\_  GL  KB  
 Lease Name: \_\_\_\_\_ Well #: \_\_\_\_\_  
 Well Type: (check one)  Oil  Gas  OG  WSW  Other: \_\_\_\_\_  
 SWD Permit #: \_\_\_\_\_  ENHR Permit #: \_\_\_\_\_  
 Gas Storage Permit #: \_\_\_\_\_  
 Spud Date: \_\_\_\_\_ Date Shut-In: \_\_\_\_\_

|                  | Conductor | Surface | Production | Intermediate | Liner | Tubing |
|------------------|-----------|---------|------------|--------------|-------|--------|
| Size             |           |         |            |              |       |        |
| Setting Depth    |           |         |            |              |       |        |
| Amount of Cement |           |         |            |              |       |        |
| Top of Cement    |           |         |            |              |       |        |
| Bottom of Cement |           |         |            |              |       |        |

Casing Fluid Level from Surface: \_\_\_\_\_ How Determined? \_\_\_\_\_ Date: \_\_\_\_\_  
 Casing Squeeze(s): \_\_\_\_\_ to \_\_\_\_\_ w / \_\_\_\_\_ sacks of cement, \_\_\_\_\_ to \_\_\_\_\_ w / \_\_\_\_\_ sacks of cement. Date: \_\_\_\_\_  
(top) (bottom) (top) (bottom)  
 Do you have a valid Oil & Gas Lease?  Yes  No  
 Depth and Type:  Junk in Hole at \_\_\_\_\_  Tools in Hole at \_\_\_\_\_ Casing Leaks:  Yes  No Depth of casing leak(s): \_\_\_\_\_  
(depth) (depth)  
 Type Completion:  ALT. I  ALT. II Depth of:  DV Tool: \_\_\_\_\_ w / \_\_\_\_\_ sacks of cement  Port Collar: \_\_\_\_\_ w / \_\_\_\_\_ sack of cement  
(depth) (depth)  
 Packer Type: \_\_\_\_\_ Size: \_\_\_\_\_ Inch Set at: \_\_\_\_\_ Feet  
 Total Depth: \_\_\_\_\_ Plug Back Depth: \_\_\_\_\_ Plug Back Method: \_\_\_\_\_

**Geological Data:**

| Formation Name | Formation Top | Formation Base | Completion Information   |
|----------------|---------------|----------------|--|
| 1. _____       | At: _____     | to _____ Feet  | Perforation Interval _____ to _____ Feet or Open Hole Interval _____ to _____ Feet |
| 2. _____       | At: _____     | to _____ Feet  | Perforation Interval _____ to _____ Feet or Open Hole Interval _____ to _____ Feet |

UNDER PENALTY OF PERJURY I HEREBY ATTEST THAT THE INFORMATION CONTAINED HEREIN IS TRUE AND CORRECT TO THE BEST OF MY KNOWLEDGE

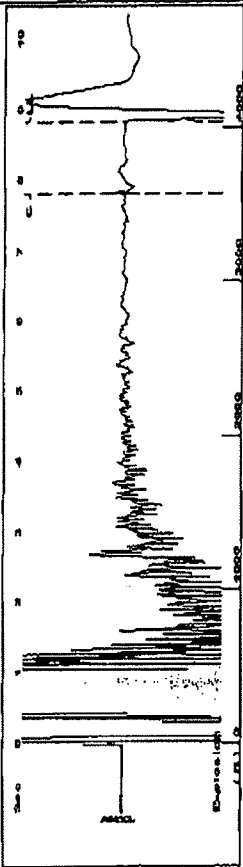
Submitted Electronically

|   |  |                |                     |                      |                                 |
|---|--|----------------|---------------------|----------------------|---------------------------------|
| <b>Do NOT Write in This Space - KCC USE ONLY</b>                                      | Date Tested: _____                         | Results: _____ | Date Plugged: _____ | Date Repaired: _____ | Date Put Back in Service: _____ |
|   | Review Completed by: _____ Comments: _____ |                |                     |                      |                                 |
| TA Approved: <input type="checkbox"/> Yes <input type="checkbox"/> Denied Date: _____ |  |                |                     |                      |                                 |

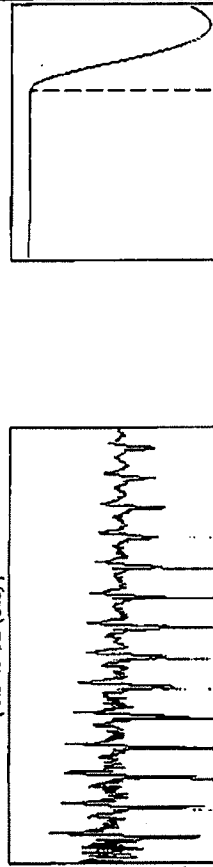
**Mail to the Appropriate KCC Conservation Office:**

|  |   |                    |
|--|---|--------------------|
|  | KCC District Office #1 - 210 E. Frontview, Suite A, Dodge City, KS 67801                      | Phone 620.225.8888 |
|  | KCC District Office #2 / UPGS - 3450 N. Rock Road, Building 600, Suite 601, Wichita, KS 67226 | Phone 316.630.4000 |
|  | KCC District Office #3 - 1500 SW Seventh Steet, Chanute, KS 66720                             | Phone 620.432.2300 |
|  | KCC District Office #4 - 2301 E. 13th Street, Hays, KS 67601-2651                             | Phone 785.625.0550 |

Group: TAD WELLS Well: HANKE B-4 (acquired on: 06/07/13 14:46:04)



Filter Type High Pass Automatic Collar Count Yes  
 Manual Acoustic Veloc 10.92 R/s Manual JTS/Sec 14.3678  
 Time 8.832 sec  
 Joints 127.61 Jts  
 Depth 4045.23 ft



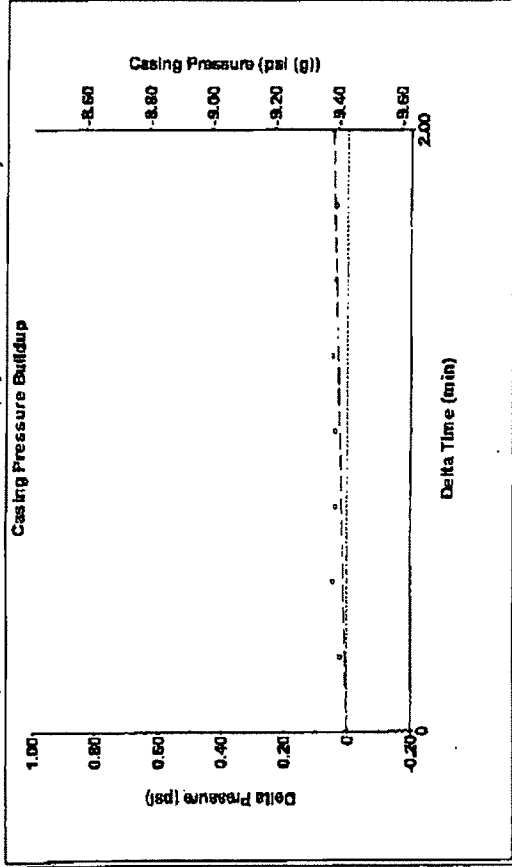
Analysis Method: Automatic

Group: TAD WELLS Well: HANKE B-4 (acquired on: 06/07/13 14:46:04)

|                       |                |                                      |              |
|-----------------------|----------------|--------------------------------------|--------------|
| Production            | Potential      | Casing Pressure                      | -9.4 psi (g) |
| Oil                   | BBL/D          | Casing Pressure Buildup              | 0.045 psi    |
| Water                 | BBL/D          | Gas/Liquid Interface Pressure        | 2.00 min     |
| Gas                   | Msc/D          | Liquid Level Depth                   | -8.6 psi (g) |
| IPR Method            | Veget          | Pump Intake Depth                    | 5648.00 ft   |
| PBHP/SBHP             | 0.0            | Formation Depth                      | 5592.00 ft   |
| Production Efficiency |                | Acoustic Velocity                    | 916.039 R/s  |
| Oil                   | 40 deg API     | Formation Submergence                | (603 R)      |
| Water                 | 1.05 Sp.Gr.H2O | Total Gaseous Liquid Column HT (TVD) | (563 R)      |
| Gas                   | 1.06 Sp.Gr.AIR | Equivalent Gas Free Liquid HT (TVD)  |              |

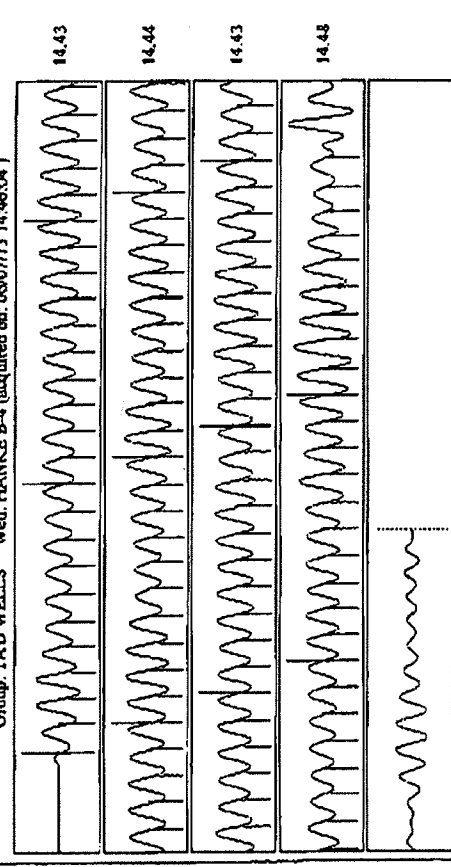
|               |          |          |         |
|---------------|----------|----------|---------|
| Producing     | Annular  | Gas Flow | 1 Msc/D |
|               | % Liquid |          | 97 %    |
| Pump Intake   | 517.1    | psi (g)  |         |
| Producing BHP | 499.0    | psi (g)  |         |
| Static BHP    | -        | psi (g)  |         |

Group: TAD WELLS Well: HANKE B-4 (acquired on: 06/07/13 14:46:04)



Change in Pressure 0.05 psi PT 9424 Range  
 Change in Time 2.00 min

Group: TAD WELLS Well: HANKE B-4 (acquired on: 06/07/13 14:46:04)



Acoustic Velocity 916.039 R/s Joints counted 109  
 Joints Per Second 14.4486 Jts/Sec Joints to liquid level 127.61  
 Depth to liquid level 4045.23 ft Filter Width 16.3678  
 Automatic Collar Count Yes Time to 1st Collar 0.256 7.8