



TEMPORARY ABANDONMENT WELL APPLICATION

OPERATOR: License# _____
 Name: _____
 Address 1: _____
 Address 2: _____
 City: _____ State: _____ Zip: _____ + _____
 Contact Person: _____
 Phone: (_____) _____
 Contact Person Email: _____
 Field Contact Person: _____
 Field Contact Person Phone: (_____) _____

API No. 15- _____
 Spot Description: _____
 _____ - _____ - _____ - _____ Sec. _____ Twp. _____ S. R. _____ E W
 _____ feet from N / S Line of Section
 _____ feet from E / W Line of Section
 GPS Location: Lat: _____, Long: _____
(e.g. xx.xxxxx) (e.g. -xxx.xxxxx)
 Datum: NAD27 NAD83 WGS84
 County: _____ Elevation: _____ GL KB
 Lease Name: _____ Well #: _____
 Well Type: (check one) Oil Gas OG WSW Other: _____
 SWD Permit #: _____ ENHR Permit #: _____
 Gas Storage Permit #: _____
 Spud Date: _____ Date Shut-In: _____

	Conductor	Surface	Production	Intermediate	Liner	Tubing
Size						
Setting Depth						
Amount of Cement						
Top of Cement						
Bottom of Cement						

Casing Fluid Level from Surface: _____ How Determined? _____ Date: _____
 Casing Squeeze(s): _____ to _____ w / _____ sacks of cement, _____ to _____ w / _____ sacks of cement. Date: _____
(top) (bottom) (top) (bottom)
 Do you have a valid Oil & Gas Lease? Yes No
 Depth and Type: Junk in Hole at _____ Tools in Hole at _____ Casing Leaks: Yes No Depth of casing leak(s): _____
(depth) (depth)
 Type Completion: ALT. I ALT. II Depth of: DV Tool: _____ w / _____ sacks of cement Port Collar: _____ w / _____ sack of cement
(depth) (depth)
 Packer Type: _____ Size: _____ Inch Set at: _____ Feet
 Total Depth: _____ Plug Back Depth: _____ Plug Back Method: _____

Geological Data:

Formation Name	Formation Top	Formation Base	Completion Information
1. _____	At: _____	to _____ Feet	Perforation Interval _____ to _____ Feet or Open Hole Interval _____ to _____ Feet
2. _____	At: _____	to _____ Feet	Perforation Interval _____ to _____ Feet or Open Hole Interval _____ to _____ Feet

UNDER PENALTY OF PERJURY I HEREBY ATTEST THAT THE INFORMATION CONTAINED HEREIN IS TRUE AND CORRECT TO THE BEST OF MY KNOWLEDGE

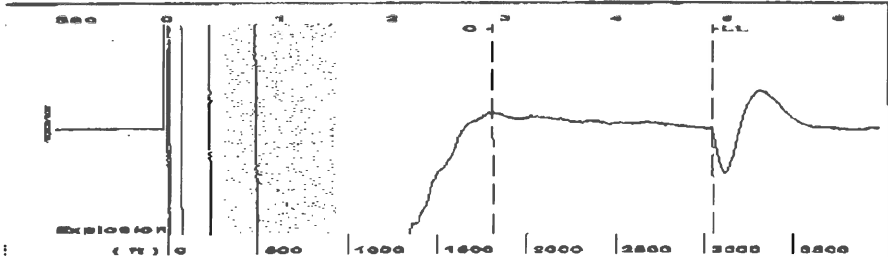
Submitted Electronically

Do NOT Write in This Space - KCC USE ONLY	Date Tested: _____	Results: _____	Date Plugged: _____	Date Repaired: _____	Date Put Back in Service: _____
	Review Completed by: _____ Comments: _____				
TA Approved: <input type="checkbox"/> Yes <input type="checkbox"/> Denied Date: _____					

Mail to the Appropriate KCC Conservation Office:

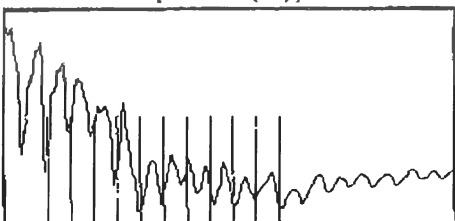
	KCC District Office #1 - 210 E. Frontview, Suite A, Dodge City, KS 67801	Phone 620.225.8888
	KCC District Office #2 / UPGS - 3450 N. Rock Road, Building 600, Suite 601, Wichita, KS 67226	Phone 316.630.4000
	KCC District Office #3 - 1500 SW Seventh Steet, Chanute, KS 66720	Phone 620.432.2300
	KCC District Office #4 - 2301 E. 13th Street, Hays, KS 67601-2651	Phone 785.625.0550

Group: Belpre Well: Britten B 3-15 (acquired on: 06/18/13 13:14:39)

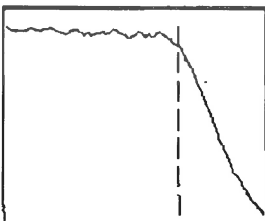


Filter Type High Pass Automatic Collar Count Yes Time 4.857 sec
 Manual Acoustic Velocity 1224.03 ft/s Manual JTS/sec 19.3798 Joints 96.3985 Jts
 Depth 3044.26 ft

[0.5 to 1.5 (Sec)]

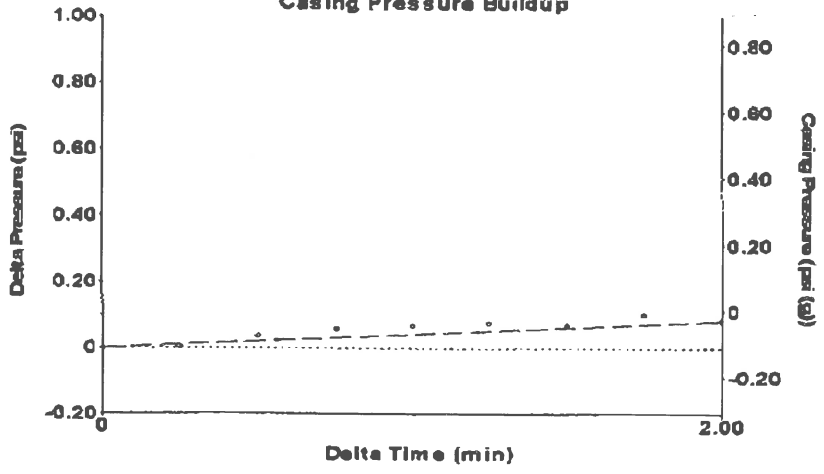


Analysis Method: Automatic



Group: Belpre Well: Britten B 3-15 (acquired on: 06/18/13 13:14:39)

Casing Pressure Buildup



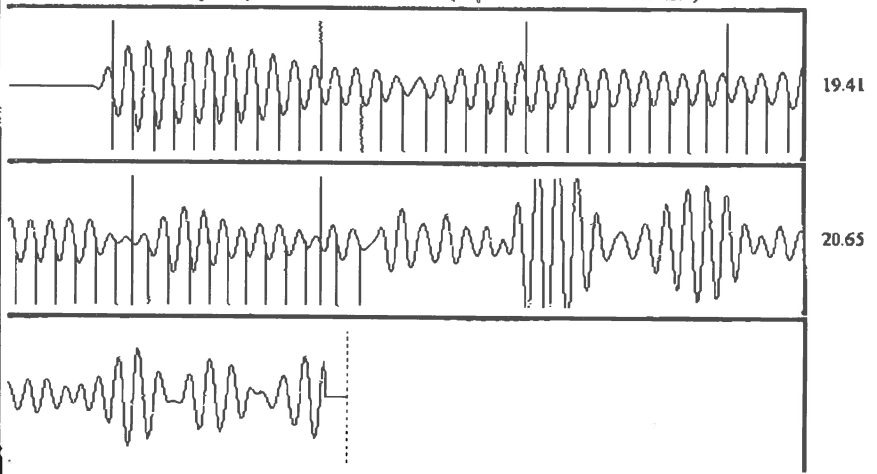
Change in Pressure 0.08 psi PT13440
 Change in Time 2.00 min Range 0 - 7 psi

Group: Belpre Well: Britten B 3-15 (acquired on: 06/18/13 13:14:39)

Production Current Potential Oil - * - BBL/D Water - * - BBL/D Gas - * - Macf/D IPR Method Vogel PBHP/SBHP - * - Production Efficiency 0.0 Oil 40 deg.API Water 1.05 Sp.Gr.H2O Gas 0.74 Sp.Gr.AIR Acoustic Velocity 1253.56 ft/s	Casing Pressure -0.1 psi (g) Casing Pressure Buildup 0.083 psi 2.00 min Gas/Liquid Interface Pressure 0.2 psi (g) Liquid Level Depth 3044.26 ft Pump Intake Depth 4359.00 ft Formation Depth 4362.00 ft Formation Submergence Total Gaseous Liquid Column HT (TVD) 1315 ft Equivalent Gas Free Liquid HT (TVD) 1206 ft Acoustic Test	Producing Annular Gas Flow 1 Macf/D % Liquid 92 % Pump Intake 406.1 psi (g) Producing BHP 407.4 psi (g) Static BHP - * - psi (g)
--	--	---



Group: Belpre Well: Britten B 3-15 (acquired on: 06/18/13 13:14:39)



Acoustic Velocity 1253.56 ft/s Joints counted 52
 Joints Per Second 19.8473 jts/sec Joints to liquid level 96.3985
 Depth to liquid level 3044.26 ft Filler Width 17.3798 21.3798
 Automatic Collar Count Yes Time to 1st Collar 0.268 2.888