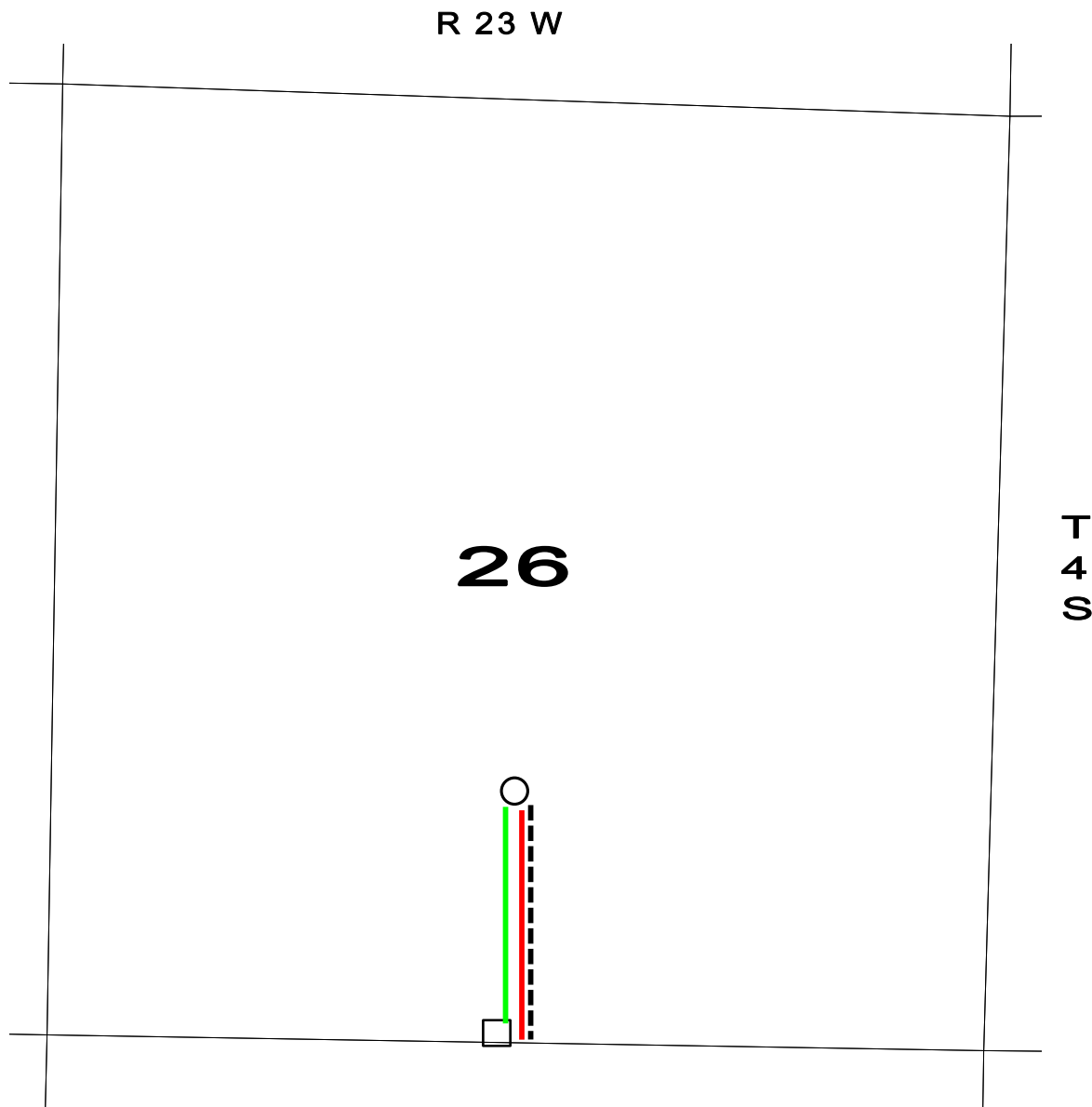


OPERATOR: Samuel Gary Jr. & Associates, Inc. 1515 Wynkoop Street, Suite 700
Denver, Colorado 80202 office: 303-831-4673 ; fax: 303-863-7285

WELL NAME: SPROUL-KNAPE 1-26

LOCATION: 1330 FSL / 2600 FWL Sec. 26-4S-23W NORTON COUNTY

SURFACE OWNER: LLOYD SPROUL REVOCABLE TRUST & GLENN SPROUL REVOCABLE TRUST
C/O JOE SPROUL
24496 ROAD E3
EDMOND, KS 67645



○ PROPOSED WELL LOCATION

□ ESTIMATED LOCATION OF TANK BATTERY

----- ESTIMATED LEASE ROAD

— ESTIMATED LOCATION OF FLOWLINES

— ESTIMATED LOCATION OF ELECTRICAL LINES