

Dyna-Log

INCORPORATED

RADIOACTIVITY LOG

Complete Cased Hole Services

EL DORADO, KS

Company VESS OIL CORPORATION

Well KOOGLER "A" # 302

Field ELDORADO

Country U.S.A.

State/Prov KANSAS

Company VESS OIL CORPORATION

Well KOOGLER "A" # 302

Field ELDORADO

Country U.S.A.

State/Prov KANSAS

Location

500' FEL - 330' FSL

SEC. 20 TWP. 26s RGE. 5 E

BUTLER COUNTY

Other Services
PERFORATE

Elevation

K.B. 1312

Permanent Datum GROUND LEVEL Elevation 1306

Log Measured From KELLY BUSHING 6' A.G.L.

G.L. 1306

Drilling Measured From KELLY BUSHING

| | |
|------------------------|-------------|
| Date | 4-24-13 |
| Run Number | ONE |
| Depth Driller | 2584 |
| Depth Logger | 2584 |
| Bottom Logged Interval | 2583 |
| Top Log Interval | 1400 |
| Open Hole Size | |
| Type Fluid | WATER-385 |
| Density / Viscosity | |
| Max. Well Deviation | |
| Estimated Cement Top | 1536 |
| Time Well Ready | |
| Time Logger on Bottom | 08:19 |
| Equipment Number | 103 |
| Location | ELDORADO |
| Recorded By | SULLIVAN |
| Witnessed By | CASEY COATS |

| Borehole Record | | | | Tubing Record | | | |
|-----------------|-----|------|----|---------------|--------|------|----|
| Run Number | Bit | From | To | Size | Weight | From | To |
| | | | | | | | |
| | | | | | | | |

| Casing Record | SIZE | WEIGHT | FROM | TO |
|-------------------|-------|--------|------|------|
| Surface String | | | | |
| Prot. String | | | | |
| Production String | 5 1/2 | 15 1/2 | 0 | 2584 |
| Liner | | | | |

RUN: CEMENT TOP

DIR: UP

DATE: 05/24/13

TIME: 09:25:01

START: 1602.75ft

STOP: 1403.00ft

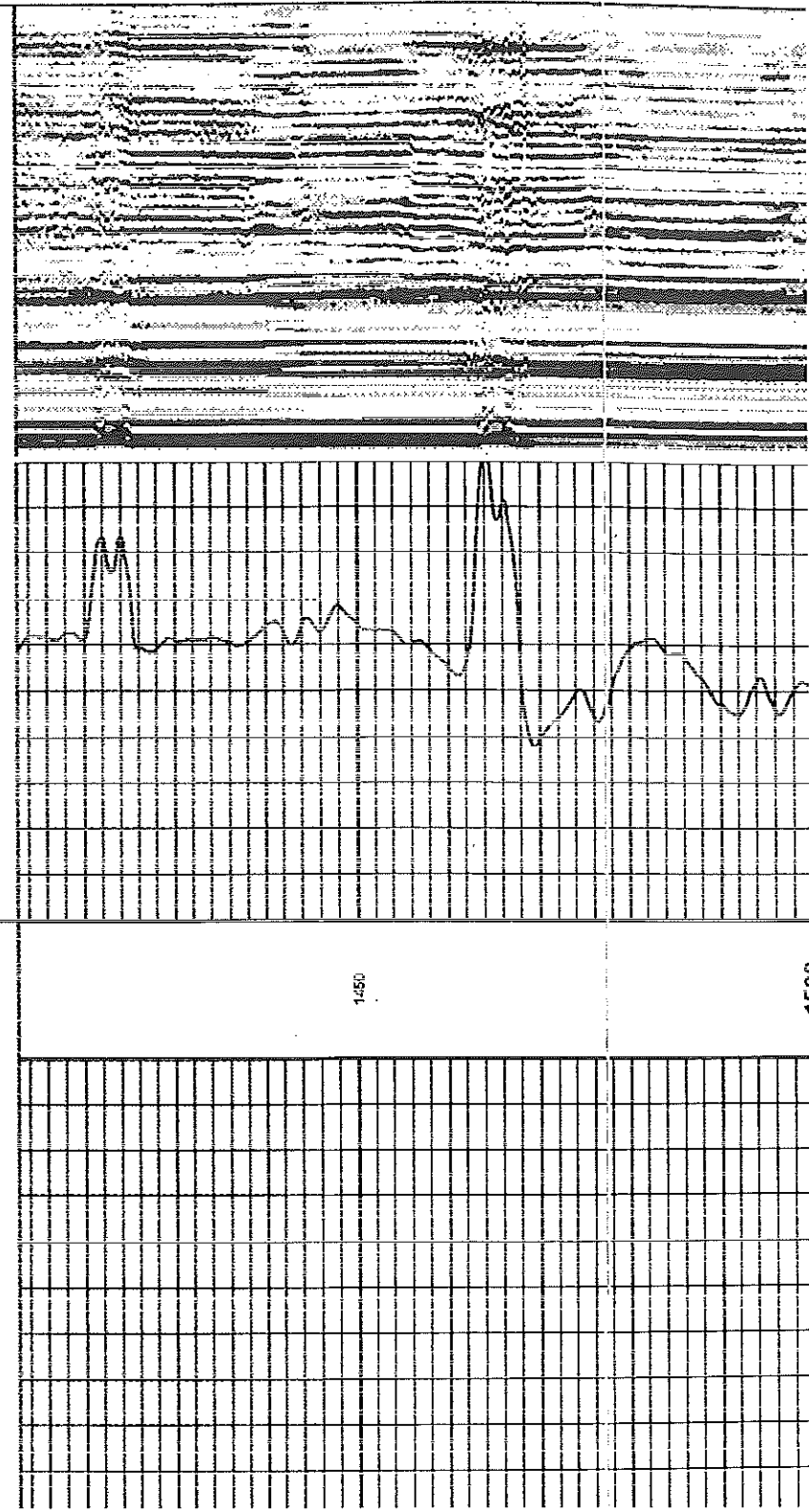
RES: 0.25ft

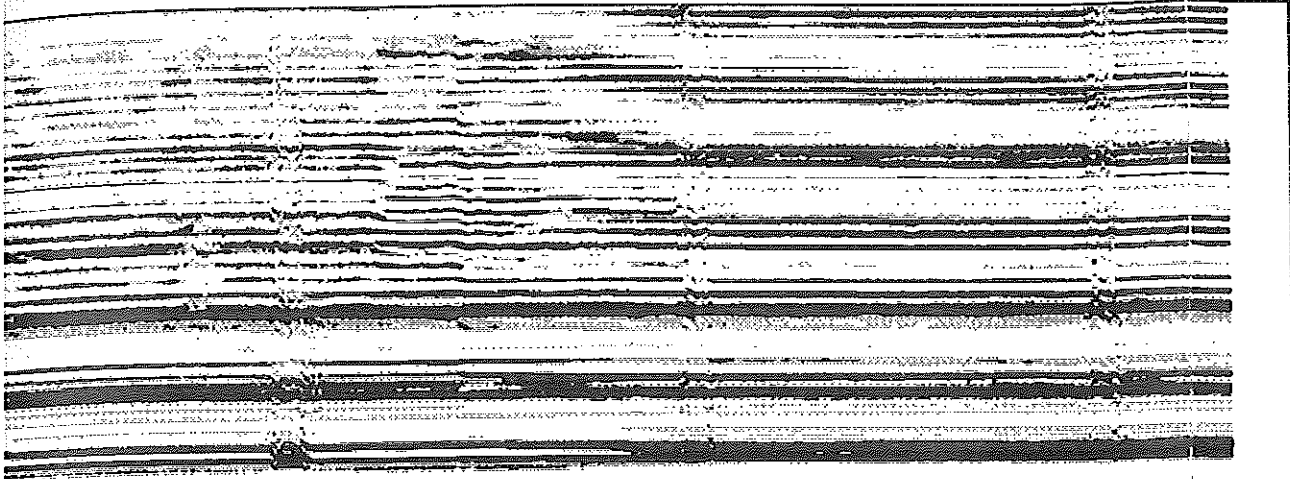
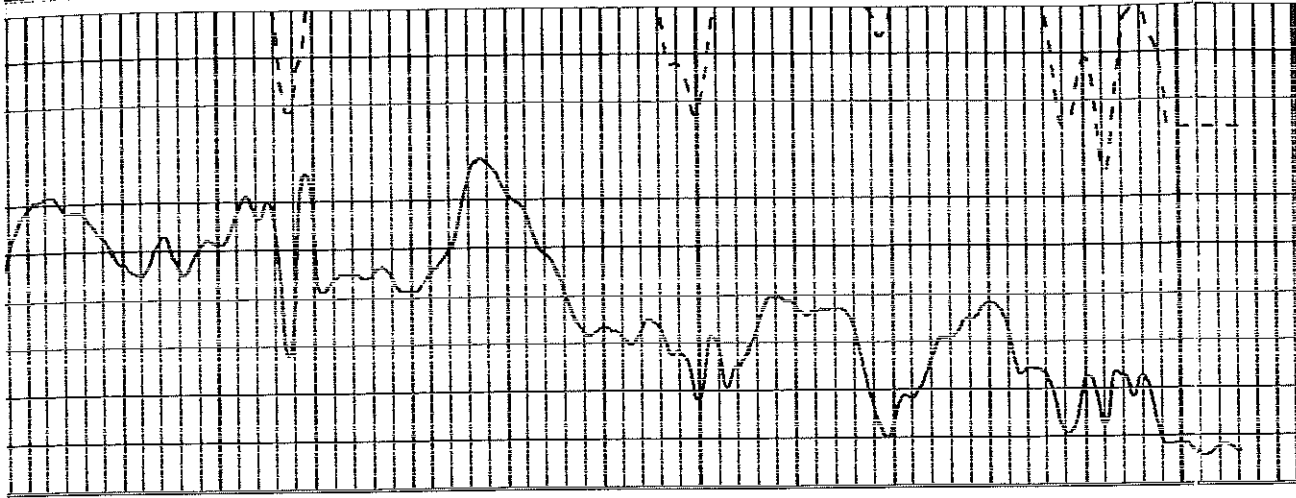
SCALE: 5"/100'

CEMENT TOP

650
200
20
100
0.0
arrival time
amplitude x 5
amplitude

VDL





APP. TOP CEMENT

RUN: CEMENT TOP

DIR: UP

DATE: 05/24/13

TIME: 09:25:01

CEMENT TOP

START: 1602.75ft

STOP: 1403.00ft

RES: 0.25ft

SCALE: 5"/100'

RUN: RADIOACTIVITY LOG

DIR: UP

DATE: 05/24/13

TIME: 08:19:30

RADIOACTIVITY LOG

START: 2575.25ft

STOP: 1366.75ft

RES: 0.25ft

SCALE: 5"/100'

GAMMA RAY

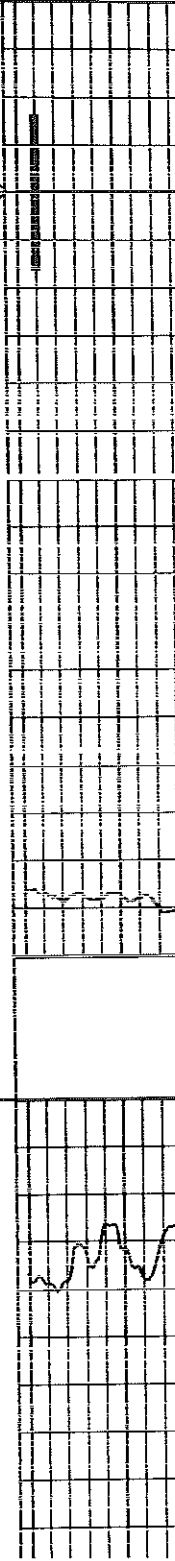
NEUTRON

CCL

425

25

100.0



425
25

NEUTRON

CGL



1400

1450

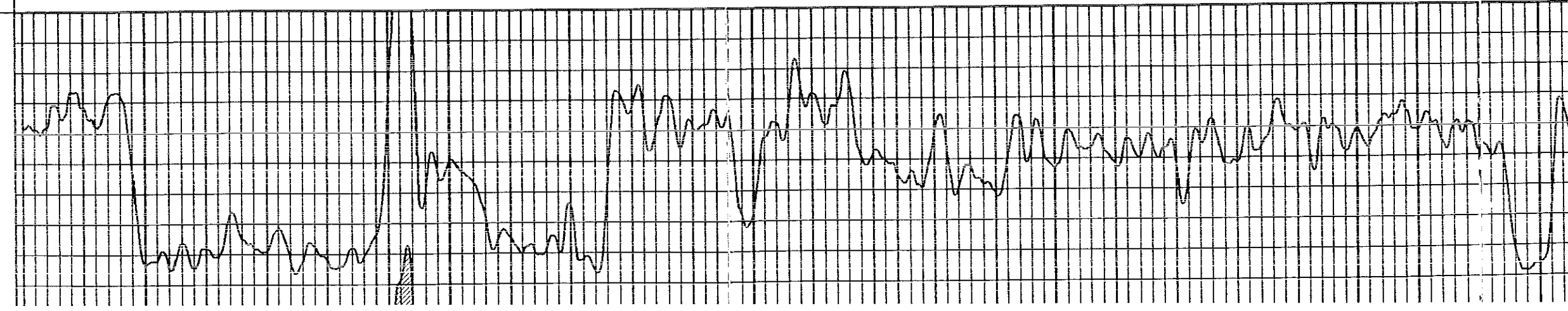
1500

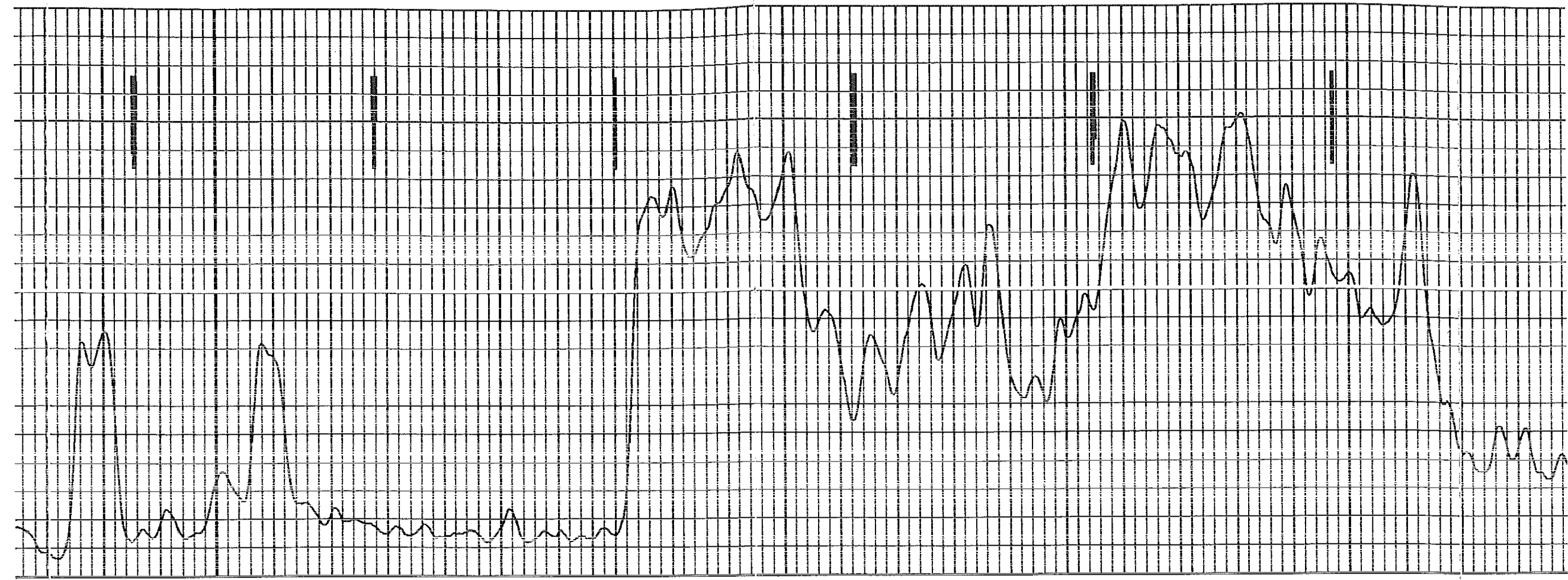
1550

1600

100.0

GAMMA RAY





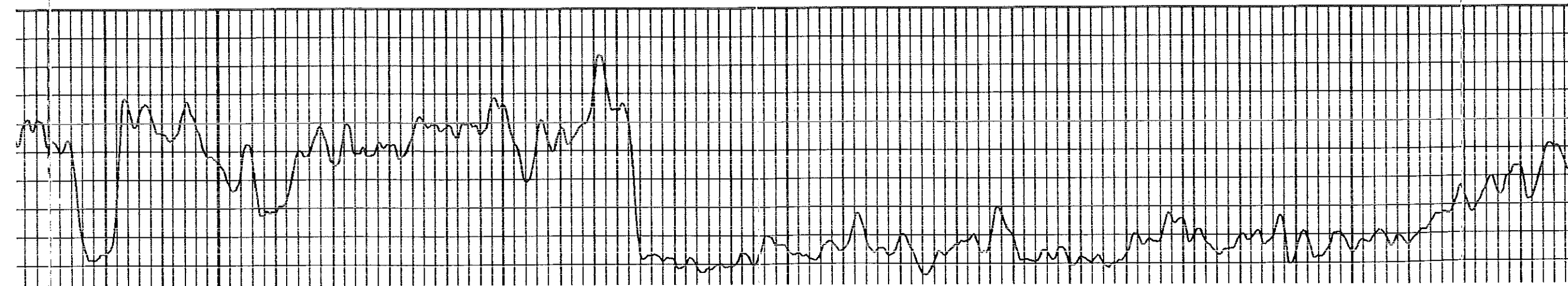
1650

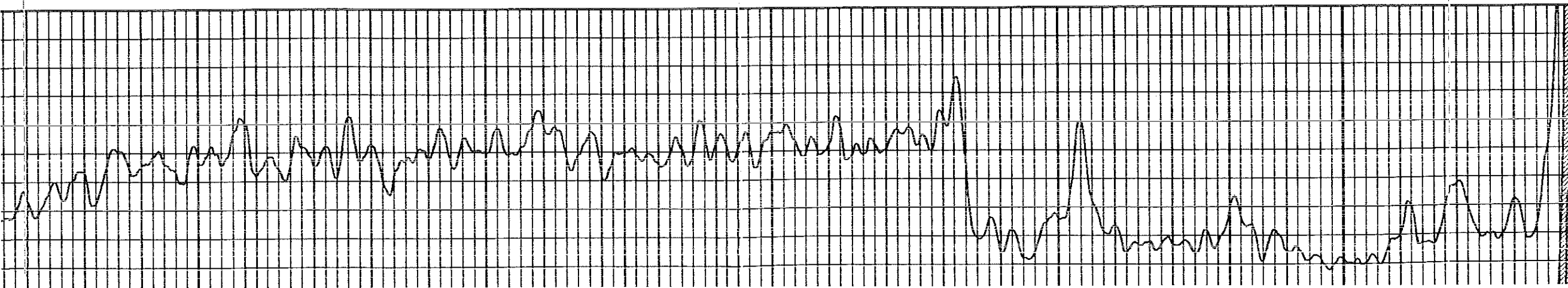
1700

1750

1800

1850







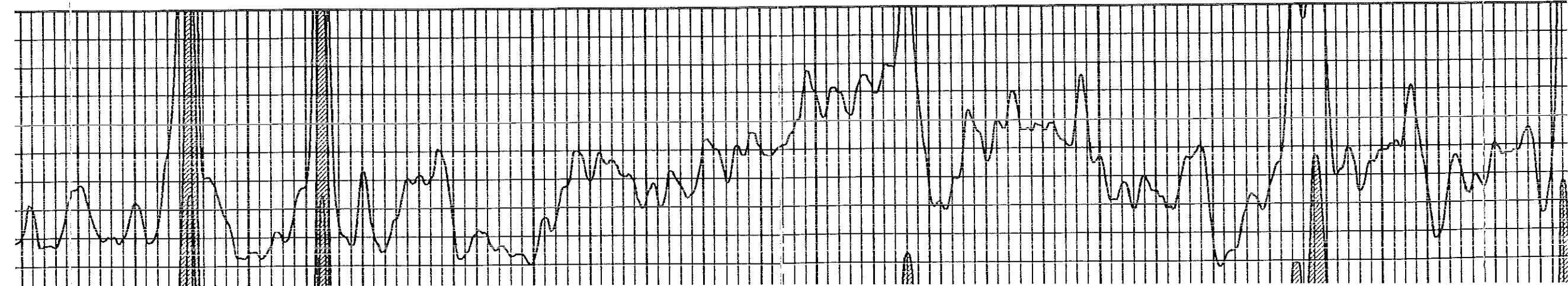
2150

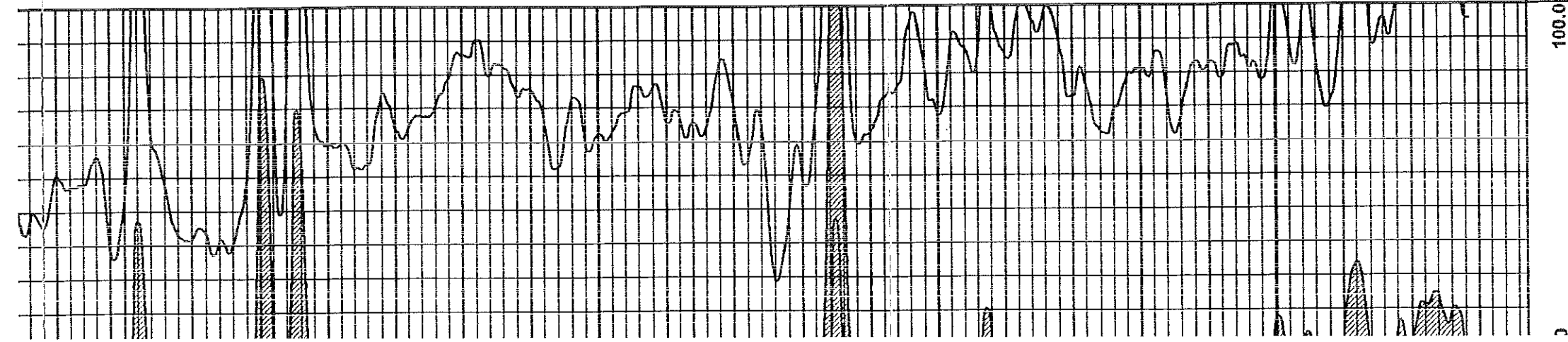
2200

2250

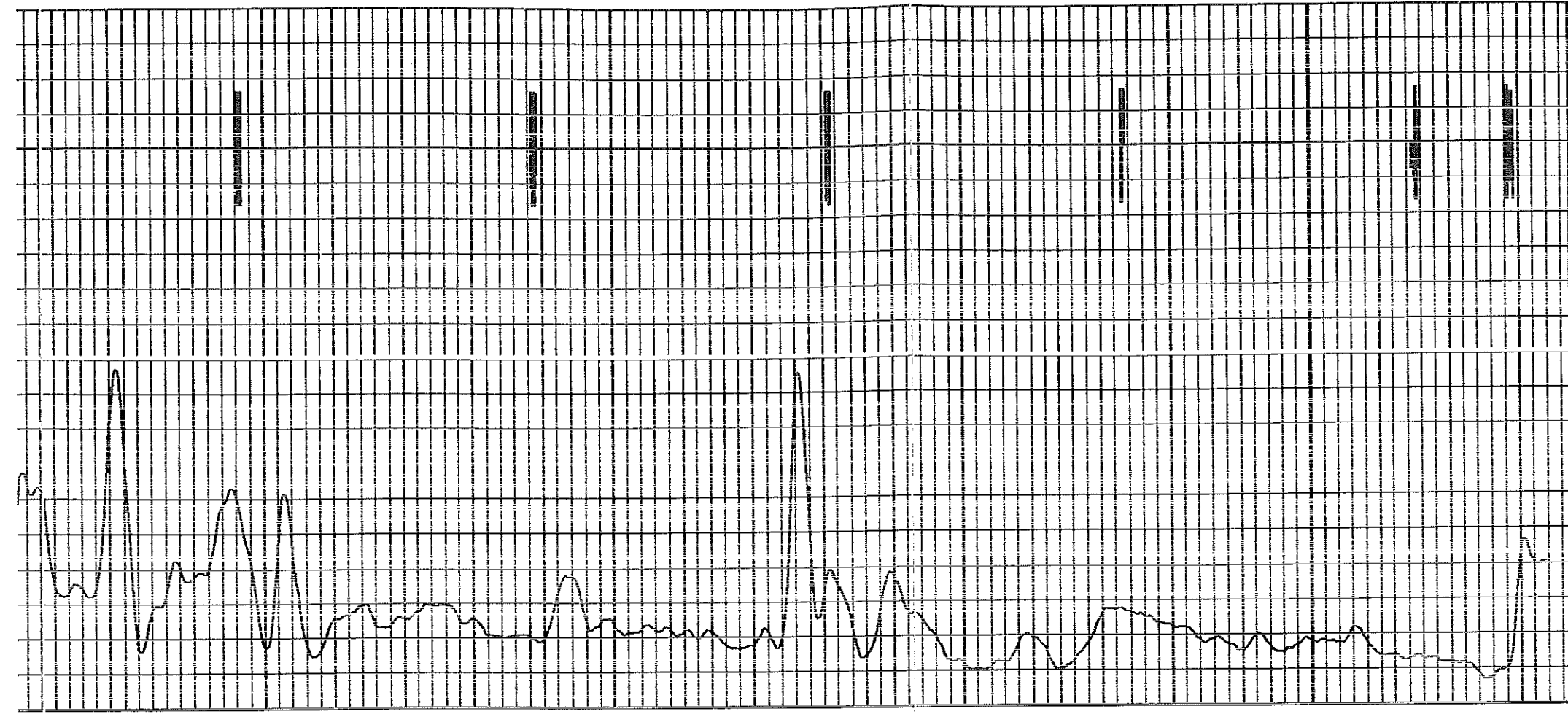
2300

2350

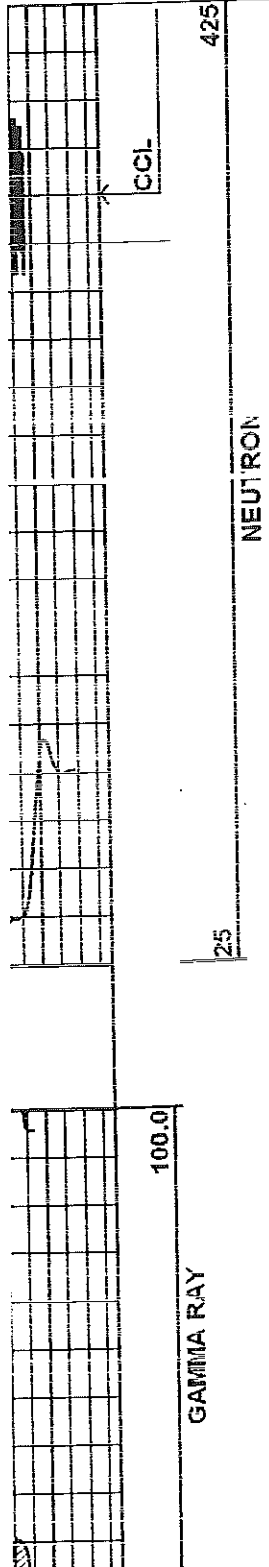




GAMMA RAY
0 100.0



NEUTRON
25 425
CCL



RUN: RADIOACTIVITY LOG
 DIR: UP
 DATE: 05/24/13
 TIME: 08:19:30

START: 2575.25ft
 STOP: 1366.75ft
 RES: 0.25ft
 SCALE: 5"/100'

RADIOACTIVITY LOG

DYNA-LOG INC.

Company VESS OIL CORPORATION
 Well KOOGLER "A" # 302
 Field EL DORADO
 Country U.S.A. State/Prv KANSAS

