

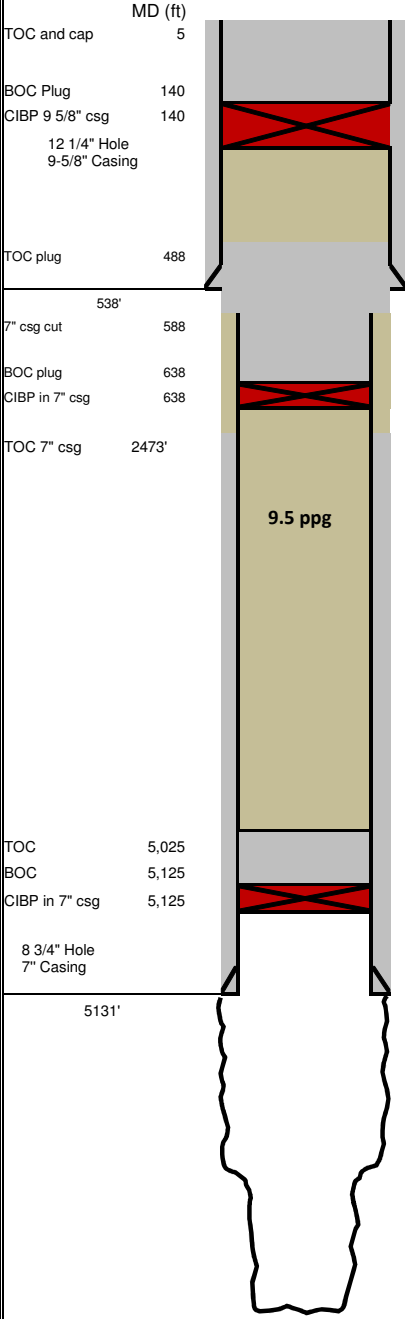


Shell E&P Company

200 North Dairy Ashford
Houston, Texas USA 77079

Lease :	Hudgens 3307 10-1	Casing											
API No:	15-077-21851-00-00	Size	Weight	Grade	Thread	Depth (ft)	ID (in)	Drift (in)	Collapse	Burst	BBL/Ft	TOC	Returns
KB :	31.8'	9-5/8"	36 #	J 55	STC	538'	8.921	8.765	2020 psi	3520 psi	0.0773	SFC	Surface
GL:	1,395	7"	23 #	L80	LTC	5131'	6.366	6.241	3830 psi	6340 psi	0.0393	SFC	Partial
Legals :	1050' FEL 330' FSL												
County:	Sec 10 T33S R07W												
State:	Harper												
Spud:	10/8/2012												
RR:	11/20/2012												

Tubing										
Size	Weight	Grade	Thread	Depth	ID	Drift	Collapse	Burst	BBL/Ft	
4.5"	11.6#	N80	LTC	5072	3.600	3.350	6351	7772	0.015	
Duoline 20 ERW Lined Pipe										



Key Depths (ft)	
TD	6145
PBTD	6145
EST. top of Cement	Sfc
Comments on Cement	
9-5/8" :Bumped plug.	
7" : Bumped plug. Floats holding.	
Partial returns through job.	

Highlights		
Est. BHT	145	F
Est. BHP	2,581	psi

Formation Depths		
	MD	TVD
Top of Arbuckle	5,125	5,125
Deepest Water Well in County	89'	89'

P&A Fluids	
Cement	Class H
Mud	9.5 lbs/gal Viscosity > 36