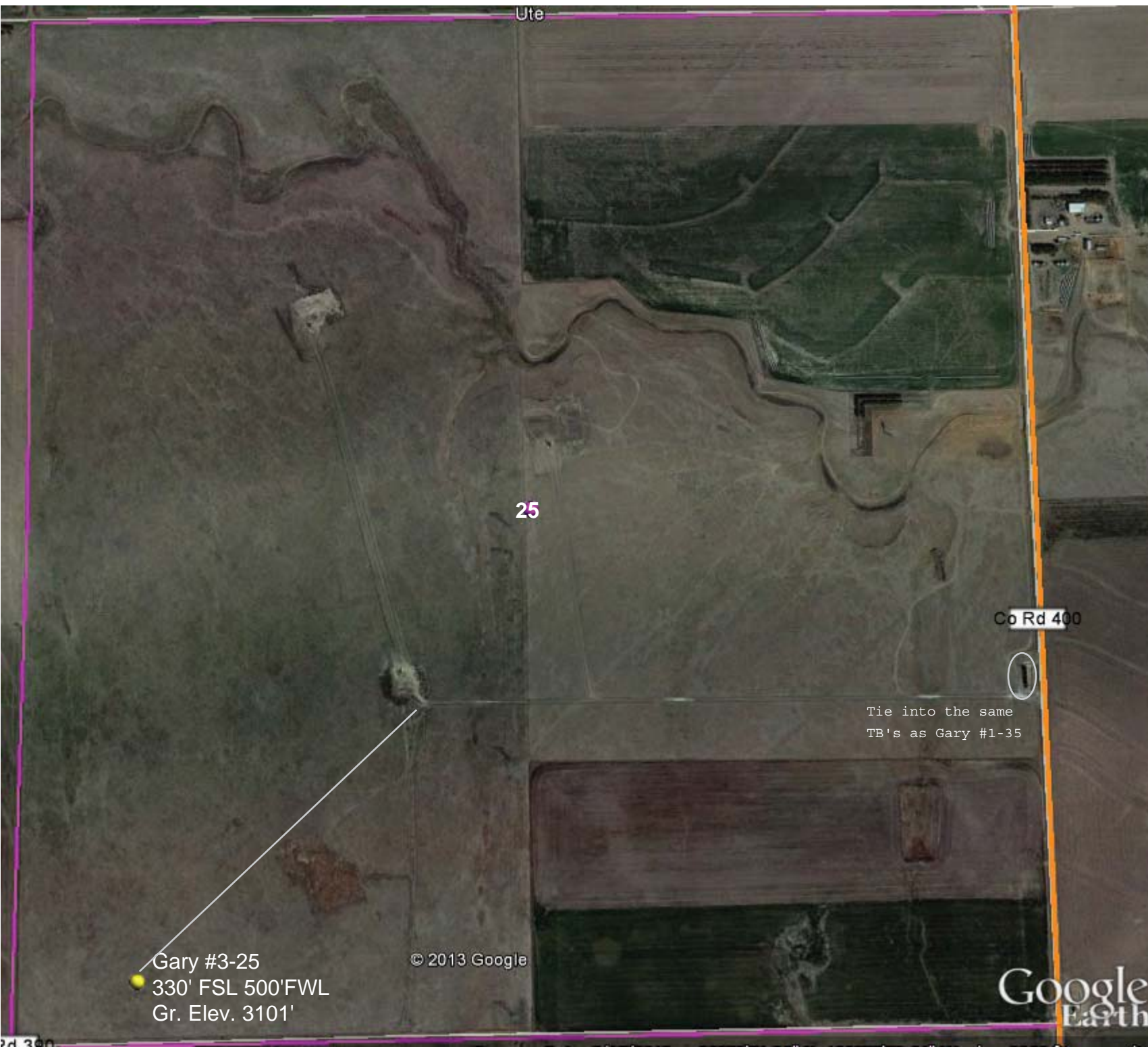


Operator:  
Murfin Drilling Company  
Inc.

Gary #3-25  
330'FSL 500FWL  
Sec. 25-R12S-  
R33W  
Logan County, KS  
Gr. Elevation: 3101'



Gary #3-25  
330' FSL 500'FWL  
Gr. Elev. 3101'

© 2013 Google

Co Rd 400



Tie into the same  
TB's as Gary #1-35

Google  
Earth

2d 300