



**TRILOBITE TESTING, INC.**

# DRILL STEM TEST REPORT

Shakespeare Oil Co. Inc

**22-17s-33w Scott Co. KS**

202 W Main St.  
Salem IL 62881

**Rudolph # 1-22**

Job Ticket: 49123

**DST#: 6**

ATTN: Tim Priest

Test Start: 2013.04.13 @ 09:36:59

## GENERAL INFORMATION:

Formation: **Paw/MS/FS**

Deviated: No Whipstock: ft (KB)

Time Tool Opened: 12:16:44

Time Test Ended: 17:29:14

Test Type: Conventional Bottom Hole (Reset)

Tester: Tate Lang

Unit No: 58

**Interval: 4475.00 ft (KB) To 4560.00 ft (KB) (TVD)**

Reference Elevations: 3033.00 ft (KB)

Total Depth: 4560.00 ft (KB) (TVD)

3025.00 ft (CF)

Hole Diameter: 7.88 inches Hole Condition: Good

KB to GR/CF: 8.00 ft

**Serial #: 8674 Inside**

Press @ Run Depth: 19.49 psig @ 4476.00 ft (KB)

Capacity: 8000.00 psig

Start Date: 2013.04.13

End Date:

2013.04.13

Last Calib.:

2013.04.13

Start Time: 09:37:04

End Time:

17:29:13

Time On Btm:

2013.04.13 @ 12:16:29

Time Off Btm:

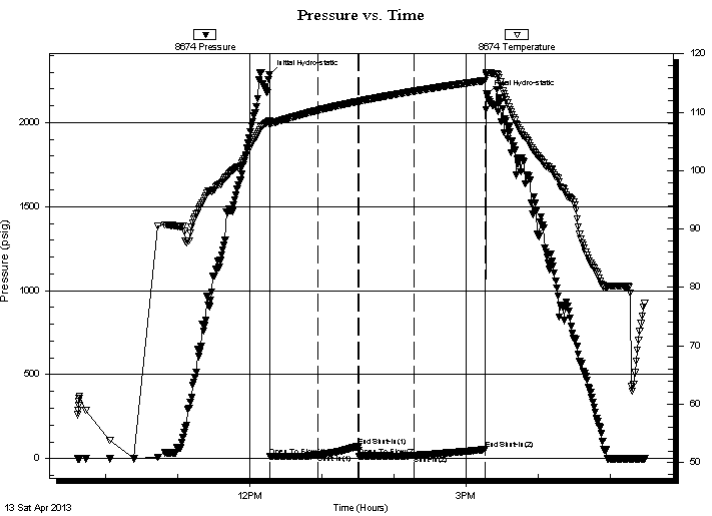
2013.04.13 @ 15:17:14

**TEST COMMENT:** Weak surface blow built to 1/2 in.

Dead no blow

Dead no blow

Dead no blow



## PRESSURE SUMMARY

Time (Min.)	Pressure (psig)	Temp (deg F)	Annotation
0	2284.07	108.44	Initial Hydro-static
1	14.26	107.80	Open To Flow (1)
41	22.40	110.32	Shut-In(1)
74	74.49	111.87	End Shut-In(1)
75	15.31	111.87	Open To Flow (2)
121	19.49	113.60	Shut-In(2)
180	54.57	115.43	End Shut-In(2)
181	2168.33	116.79	Final Hydro-static

## Recovery

Length (ft)	Description	Volume (bbl)
1.00	100%M	0.00

\* Recovery from multiple tests

## Gas Rates

Choke (inches)	Pressure (psig)	Gas Rate (Mcf/d)



**TRILOBITE  
TESTING, INC.**

# DRILL STEM TEST REPORT

**FLUID SUMMARY**

Shakespeare Oil Co. Inc

**22-17s-33w Scott Co. KS**

202 W Main St.  
Salem IL 62881

**Rudolph # 1-22**

Job Ticket: 49123

**DST#: 6**

ATTN: Tim Priest

Test Start: 2013.04.13 @ 09:36:59

## Mud and Cushion Information

Mud Type: Gel Chem

Cushion Type:

Oil API:

deg API

Mud Weight: 9.00 lb/gal

Cushion Length:

ft

Water Salinity:

ppm

Viscosity: 56.00 sec/qt

Cushion Volume:

bbbl

Water Loss: 7.99 in<sup>3</sup>

Gas Cushion Type:

Resistivity: ohm.m

Gas Cushion Pressure:

psig

Salinity: 7000.00 ppm

Filter Cake: 1.00 inches

## Recovery Information

Recovery Table

Length ft	Description	Volume bbl
1.00	100%M	0.005

Total Length: 1.00 ft      Total Volume: 0.005 bbl

Num Fluid Samples: 0

Num Gas Bombs: 0

Serial #:

Laboratory Name:

Laboratory Location:

Recovery Comments:

Serial #: 8674

Inside

Shakespeare Oil Co. Inc

Rudolph # 1-22

DST Test Number: 6

