



## DRILL STEM TEST REPORT

Prepared For: **John O Farmer**

PO Box 352  
Russell KS 67665

ATTN: Austin Klaus

### **Hanchet B #1**

#### **17-4s-18w Phillips,KS**

Start Date: 2013.02.16 @ 17:00:00

End Date: 2013.02.16 @ 23:05:00

Job Ticket #: 48046                      DST #: 1

Trilobite Testing, Inc  
PO Box 362 Hays, KS 67601  
ph: 785-625-4778 fax: 785-625-5620

Printed: 2013.02.27 @ 12:19:37



**TRILOBITE  
TESTING, INC.**

# DRILL STEM TEST REPORT

John O Farmer

**17-4s-18w Phillips,KS**

PO Box 352  
Russell KS 67665

**Hanchet B #1**

Job Ticket: 48046

**DST#: 1**

ATTN: Austin Klaus

Test Start: 2013.02.16 @ 17:00:00

## GENERAL INFORMATION:

Formation: **LKC**

Deviated: No Whipstock: ft (KB)

Time Tool Opened: 18:26:30

Time Test Ended: 23:05:00

Test Type: Bottom Hole (Initial)

Tester: Chuck Kreuzer Jr.

Unit No: 61

**Interval: 3091.00 ft (KB) To 3155.00 ft (KB) (TVD)**

Reference Elevations: 1894.00 ft (KB)

Total Depth: 3155.00 ft (KB) (TVD)

1886.00 ft (CF)

Hole Diameter: 7.88 inches Hole Condition: Good

KB to GR/CF: 8.00 ft

**Serial #: 8791**

**Inside**

Press @ Run Depth: 133.90 psig @ 3095.00 ft (KB)

Capacity: 8000.00 psig

Start Date: 2013.02.16

End Date:

2013.02.16

Last Calib.:

2013.02.16

Start Time: 17:00:01

End Time:

23:05:00

Time On Btm:

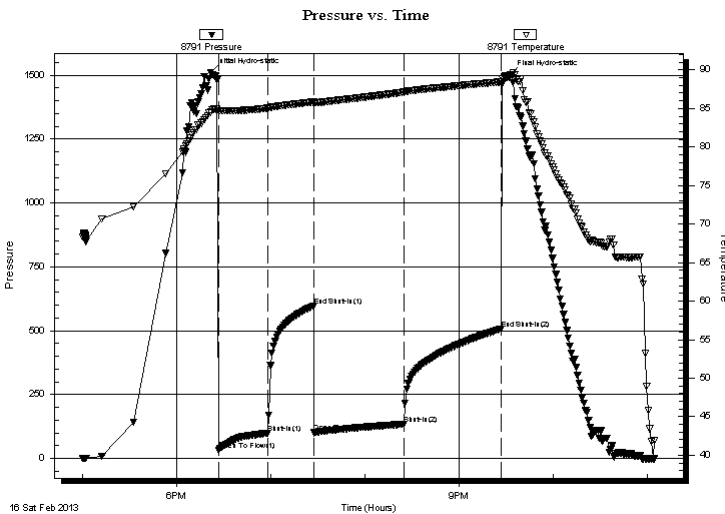
2013.02.16 @ 18:21:30

Time Off Btm:

2013.02.16 @ 21:32:30

**TEST COMMENT:** IF: Weak blow, Built to 4" over 30 mins.  
IS: No blow back  
FF: Weak blow built to 5" over 60 mins.  
FS: No blow back

## PRESSURE SUMMARY



Time (Min.)	Pressure (psig)	Temp (deg F)	Annotation
0	1511.32	84.52	Initial Hydro-static
5	32.19	84.68	Open To Flow (1)
37	98.85	85.03	Shut-In(1)
66	596.98	85.85	End Shut-In(1)
66	100.74	85.64	Open To Flow (2)
123	133.90	87.12	Shut-In(2)
185	506.91	88.46	End Shut-In(2)
191	1503.30	89.17	Final Hydro-static

## Recovery

Length (ft)	Description	Volume (bbl)
212.00	water-100%w	1.88

## Gas Rates

	Choke (inches)	Pressure (psig)	Gas Rate (Mcf/d)





**TRILOBITE  
TESTING, INC.**

# DRILL STEM TEST REPORT

**TOOL DIAGRAM**

John O Farmer

**17-4s-18w Phillips,KS**

PO Box 352  
Russell KS 67665

**Hanchet B #1**

Job Ticket: 48046

**DST#: 1**

ATTN: Austin Klaus

Test Start: 2013.02.16 @ 17:00:00

## Tool Information

Drill Pipe:	Length: 2971.00 ft	Diameter: 3.80 inches	Volume: 41.68 bbl	Tool Weight: 2000.00 lb
Heavy Wt. Pipe:	Length: 0.00 ft	Diameter: 0.00 inches	Volume: 0.00 bbl	Weight set on Packer: 25000.00 lb
Drill Collar:	Length: 120.00 ft	Diameter: 2.25 inches	Volume: 0.59 bbl	Weight to Pull Loose: 50000.00 lb
			<u>Total Volume: 42.27 bbl</u>	Tool Chased 2.00 ft
Drill Pipe Above KB:	20.00 ft			String Weight: Initial 45000.00 lb
Depth to Top Packer:	3091.00 ft			Final 46000.00 lb
Depth to Bottom Packer:	ft			
Interval between Packers:	64.00 ft			
Tool Length:	84.00 ft			
Number of Packers:	2	Diameter: 6.75 inches		

Tool Comments:

Tool Description	Length (ft)	Serial No.	Position	Depth (ft)	Accum. Lengths
------------------	-------------	------------	----------	------------	----------------

Shut In Tool	5.00			3076.00	
Hydraulic tool	5.00			3081.00	
Packer	5.00			3086.00	20.00 Bottom Of Top Packer
Packer	5.00			3091.00	
Stubb	1.00			3092.00	
Perforations	2.00			3094.00	
Change Over Sub	1.00			3095.00	
Recorder	0.00	8791	Inside	3095.00	
Recorder	0.00	8651	Outside	3095.00	
Blank Spacing	31.00			3126.00	
Change Over Sub	1.00			3127.00	
Perforations	25.00			3152.00	
Bullnose	3.00			3155.00	64.00 Bottom Packers & Anchor

**Total Tool Length: 84.00**



**TRILOBITE  
TESTING, INC.**

# DRILL STEM TEST REPORT

**FLUID SUMMARY**

John O Farmer

**17-4s-18w Phillips,KS**

PO Box 352  
Russell KS 67665

**Hanchet B #1**

Job Ticket: 48046

**DST#: 1**

ATTN: Austin Klaus

Test Start: 2013.02.16 @ 17:00:00

## Mud and Cushion Information

Mud Type: Gel Chem

Cushion Type:

Oil API:

deg API

Mud Weight: 9.00 lb/gal

Cushion Length:

ft

Water Salinity:

ppm

Viscosity: 55.00 sec/qt

Cushion Volume:

bbbl

Water Loss: 7.58 in<sup>3</sup>

Gas Cushion Type:

Resistivity: ohm.m

Gas Cushion Pressure:

psig

Salinity: 400.00 ppm

Filter Cake: 2.00 inches

## Recovery Information

Recovery Table

Length ft	Description	Volume bbl
212.00	water-100%w	1.881

Total Length: 212.00 ft      Total Volume: 1.881 bbl

Num Fluid Samples: 0

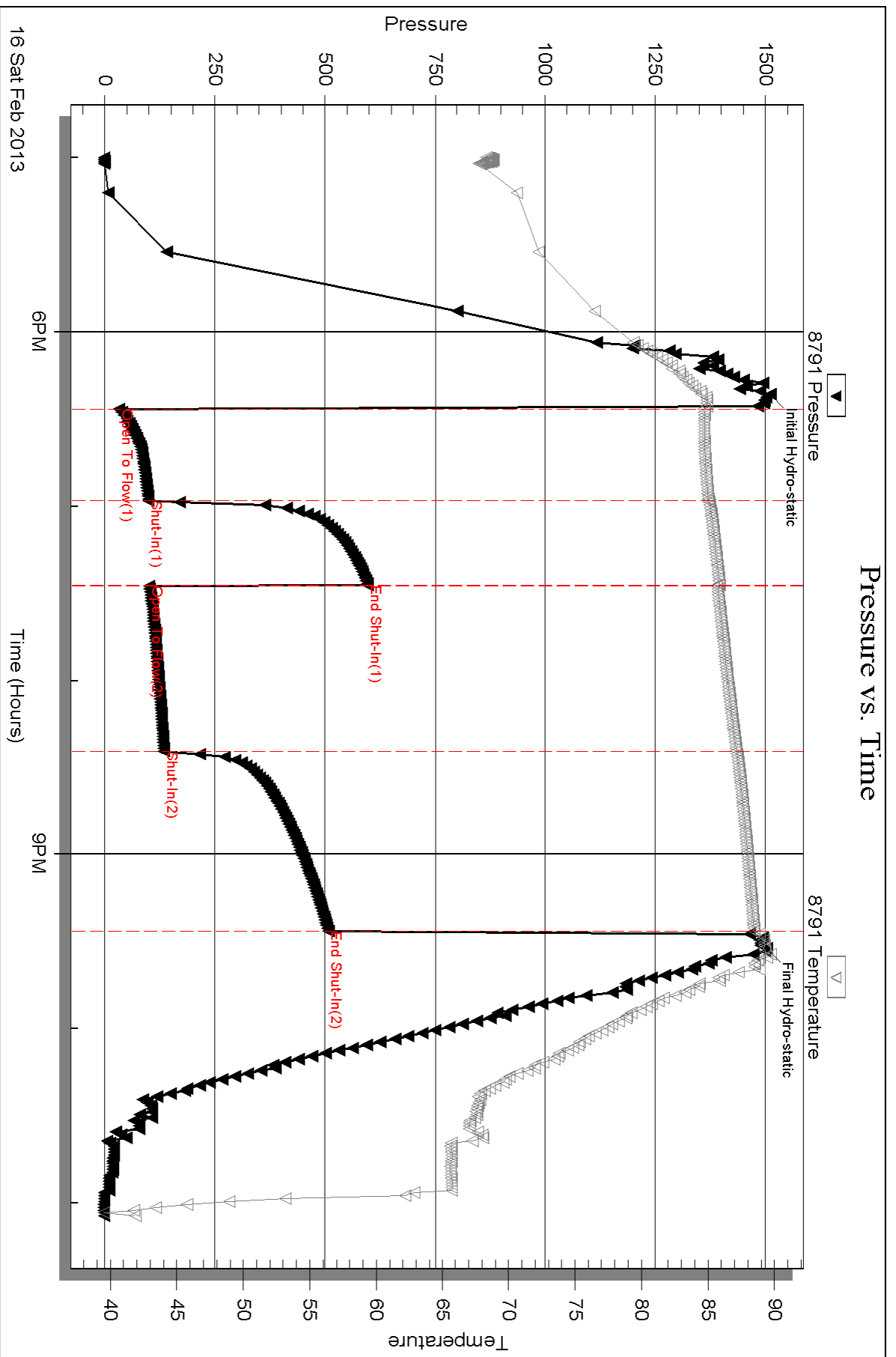
Num Gas Bombs: 0

Serial #:

Laboratory Name:

Laboratory Location:

Recovery Comments:

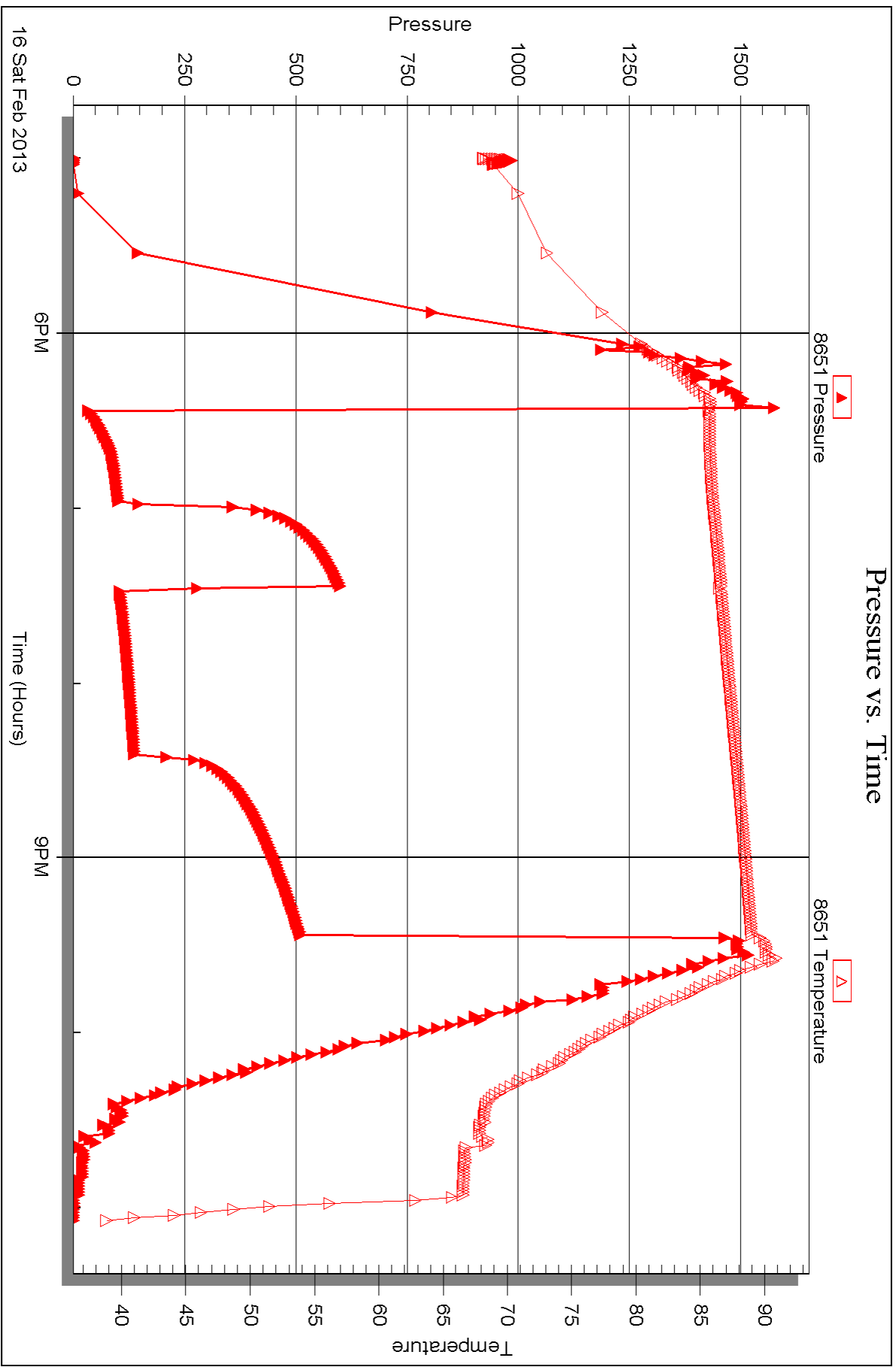


Serial #: 8651

Outside John O Farmer

Hanchet B #1

DST Test Number: 1





## DRILL STEM TEST REPORT

Prepared For: **John O Farmer**

PO Box 352  
Russell KS 67665

ATTN: Austin Klaus

### **Hanchet B #1**

### **17-4s-18w Phillips,KS**

Start Date: 2013.02.17 @ 06:10:00

End Date: 2013.02.17 @ 11:35:30

Job Ticket #: 48047                      DST #: 2

Trilobite Testing, Inc  
PO Box 362 Hays, KS 67601  
ph: 785-625-4778 fax: 785-625-5620

Printed: 2013.02.27 @ 12:17:18

John O Farmer  
17-4s-18w Phillips,KS  
Hanchet B #1  
DST # 2  
LKC-DJF  
2013.02.17





**TRILOBITE  
TESTING, INC.**

# DRILL STEM TEST REPORT

John O Farmer

**17-4s-18w Phillips,KS**

PO Box 352  
Russell KS 67665

**Hanchet B #1**

Job Ticket: 48047

**DST#: 2**

ATTN: Austin Klaus

Test Start: 2013.02.17 @ 06:10:00

## GENERAL INFORMATION:

Formation: **LKC-D,F**

Deviated: No Whipstock: ft (KB)

Time Tool Opened: 07:55:30

Time Test Ended: 11:35:30

Test Type: Bottom Hole (Reset)

Tester: Chuck Kreuzer Jr.

Unit No: 61

**Interval: 3163.00 ft (KB) To 3198.00 ft (KB) (TVD)**

Reference Elevations: 1894.00 ft (KB)

Total Depth: 3198.00 ft (KB) (TVD)

1886.00 ft (CF)

Hole Diameter: 7.88 inches Hole Condition: Good

KB to GR/CF: 8.00 ft

**Serial #: 8791**

**Inside**

Press @ Run Depth: 20.48 psig @ 3169.00 ft (KB)

Capacity: 8000.00 psig

Start Date: 2013.02.17

End Date:

2013.02.17

Last Calib.:

2013.02.17

Start Time: 06:10:01

End Time:

11:35:30

Time On Btm:

2013.02.17 @ 07:47:30

Time Off Btm:

2013.02.17 @ 10:06:30

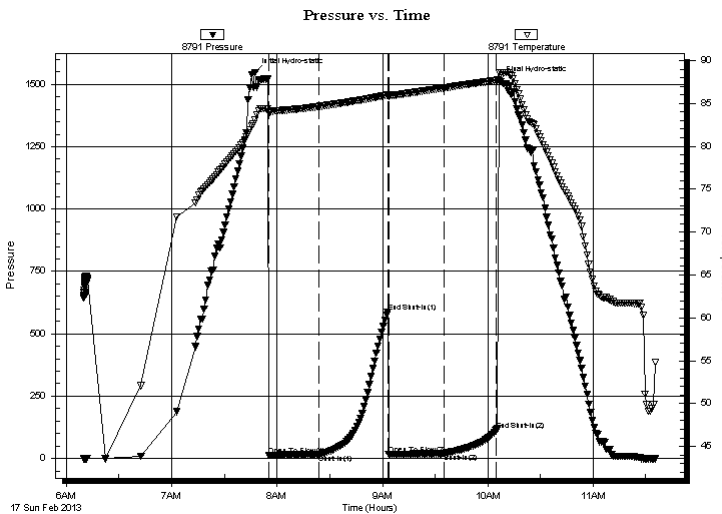
**TEST COMMENT:** IF: Weak blow, Died in 15 mins.

IS: No blow back

FF: No blow

FS: No blow back

## PRESSURE SUMMARY



Time (Min.)	Pressure (psig)	Temp (deg F)	Annotation
0	1548.08	83.05	Initial Hydro-static
8	12.31	83.88	Open To Flow (1)
37	16.38	84.65	Shut-In(1)
76	586.83	85.98	End Shut-In(1)
76	16.35	85.83	Open To Flow (2)
108	20.48	86.82	Shut-In(2)
138	114.92	87.70	End Shut-In(2)
139	1515.05	88.61	Final Hydro-static

## Recovery

Length (ft)	Description	Volume (bbl)
10.00	mud w ith oil specs	0.05

\* Recovery from multiple tests

## Gas Rates

Choke (inches)	Pressure (psig)	Gas Rate (Mcf/d)





**TRILOBITE  
TESTING, INC.**

# DRILL STEM TEST REPORT

**TOOL DIAGRAM**

John O Farmer

**17-4s-18w Phillips,KS**

PO Box 352  
Russell KS 67665

**Hanchet B #1**

Job Ticket: 48047

**DST#: 2**

ATTN: Austin Klaus

Test Start: 2013.02.17 @ 06:10:00

## Tool Information

Drill Pipe:	Length: 3033.00 ft	Diameter: 3.80 inches	Volume: 42.55 bbl	Tool Weight: 2000.00 lb
Heavy Wt. Pipe:	Length: 0.00 ft	Diameter: 0.00 inches	Volume: 0.00 bbl	Weight set on Packer: 25000.00 lb
Drill Collar:	Length: 120.00 ft	Diameter: 2.25 inches	Volume: 0.59 bbl	Weight to Pull Loose: 50000.00 lb
		Total Volume: 43.14 bbl		Tool Chased 2.00 ft
Drill Pipe Above KB:	10.00 ft			String Weight: Initial 45000.00 lb
Depth to Top Packer:	3163.00 ft			Final 45000.00 lb
Depth to Bottom Packer:	ft			
Interval between Packers:	35.00 ft			
Tool Length:	55.00 ft			
Number of Packers:	2	Diameter: 6.75 inches		

Tool Comments:

Tool Description	Length (ft)	Serial No.	Position	Depth (ft)	Accum. Lengths
------------------	-------------	------------	----------	------------	----------------

Shut In Tool	5.00			3148.00	
Hydraulic tool	5.00			3153.00	
Packer	5.00			3158.00	20.00 Bottom Of Top Packer
Packer	5.00			3163.00	
Stubb	1.00			3164.00	
Perforations	5.00			3169.00	
Recorder	0.00	8791	Inside	3169.00	
Recorder	0.00	8651	Outside	3169.00	
Change Over Sub	1.00			3170.00	
Perforations	25.00			3195.00	
Bullnose	3.00			3198.00	35.00 Bottom Packers & Anchor

**Total Tool Length: 55.00**



**TRILOBITE  
TESTING, INC.**

# DRILL STEM TEST REPORT

**FLUID SUMMARY**

John O Farmer

**17-4s-18w Phillips,KS**

PO Box 352  
Russell KS 67665

**Hanchet B #1**

Job Ticket: 48047

**DST#: 2**

ATTN: Austin Klaus

Test Start: 2013.02.17 @ 06:10:00

## Mud and Cushion Information

Mud Type: Gel Chem

Cushion Type:

Oil API:

deg API

Mud Weight: 9.00 lb/gal

Cushion Length:

ft

Water Salinity:

ppm

Viscosity: 55.00 sec/qt

Cushion Volume:

bbbl

Water Loss: 7.57 in<sup>3</sup>

Gas Cushion Type:

Resistivity: ohm.m

Gas Cushion Pressure:

psig

Salinity: 400.00 ppm

Filter Cake: 2.00 inches

## Recovery Information

Recovery Table

Length ft	Description	Volume bbl
10.00	mud w ith oil specs	0.049

Total Length: 10.00 ft      Total Volume: 0.049 bbl

Num Fluid Samples: 0

Num Gas Bombs: 0

Serial #:

Laboratory Name:

Laboratory Location:

Recovery Comments:

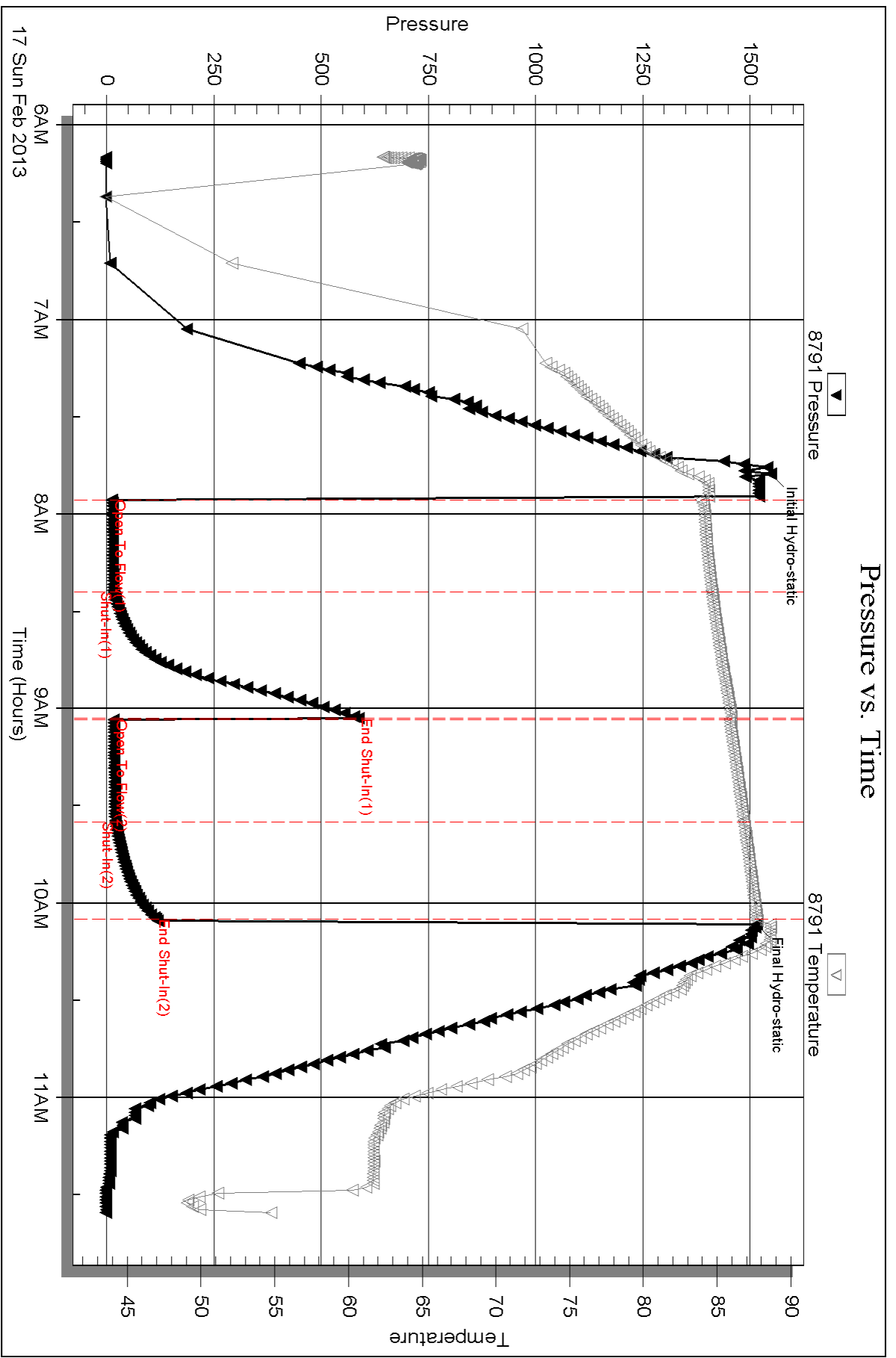
Serial #: 8791

Inside

John O Farmer

Hanchet B #1

DST Test Number: 2

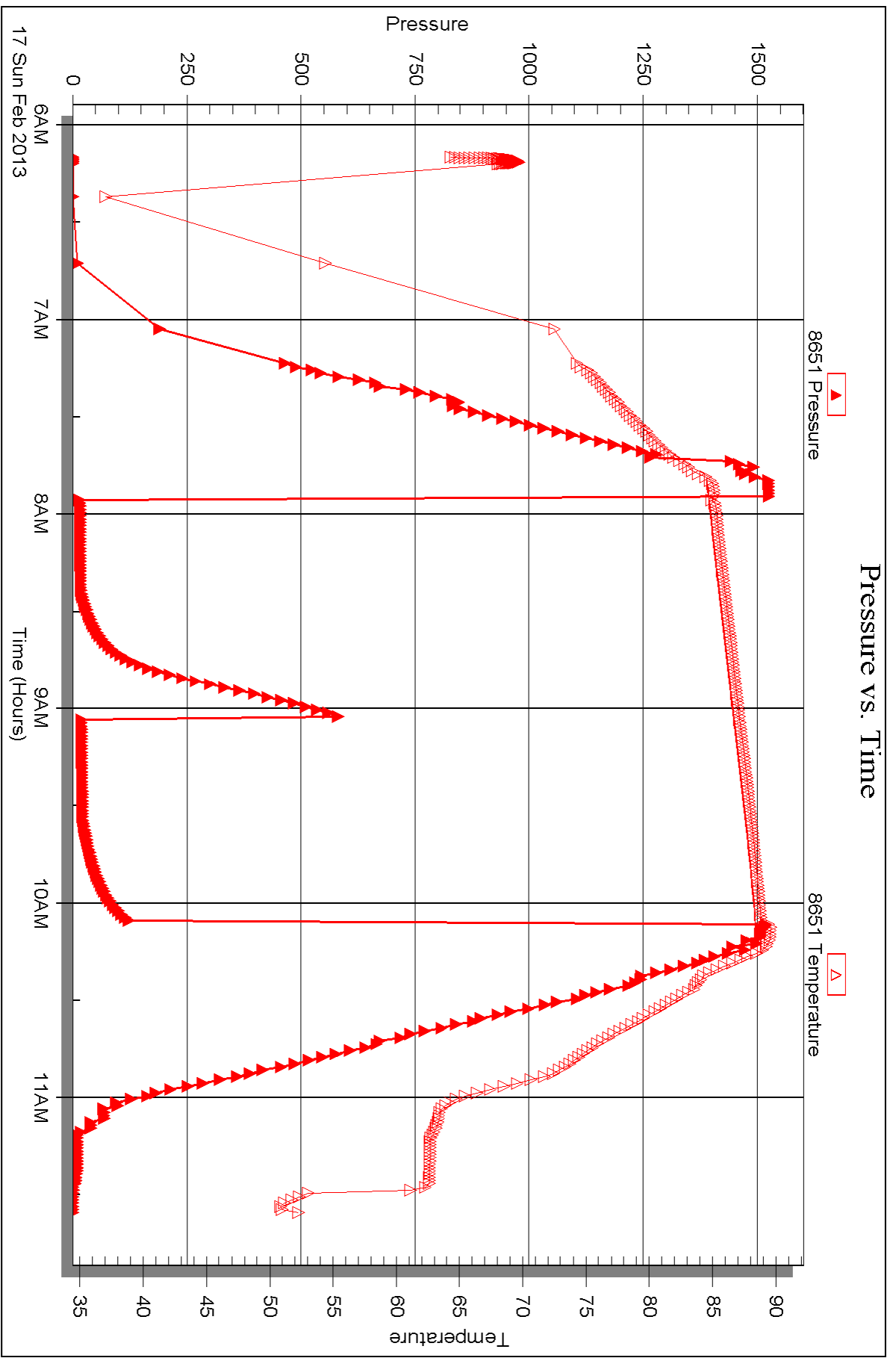


Serial #: 8651

Outside John O Farmer

Hanchet B #1

DST Test Number: 2





## DRILL STEM TEST REPORT

Prepared For: **John O Farmer**

PO Box 352  
Russell KS 67665

ATTN: Austin Klaus

### **Hanchet B #1**

#### **17-4s-18w Phillips,KS**

Start Date: 2013.02.17 @ 17:30:00

End Date: 2013.02.17 @ 22:40:30

Job Ticket #: 48048                      DST #: 3

Trilobite Testing, Inc  
PO Box 362 Hays, KS 67601  
ph: 785-625-4778 fax: 785-625-5620

Printed: 2013.02.27 @ 12:16:01



**TRILOBITE  
TESTING, INC.**

# DRILL STEM TEST REPORT

John O Farmer

**17-4s-18w Phillips,KS**

PO Box 352  
Russell KS 67665

**Hanchet B #1**

Job Ticket: 48048

**DST#: 3**

ATTN: Austin Klaus

Test Start: 2013.02.17 @ 17:30:00

## GENERAL INFORMATION:

Formation: **LKC-G**

Deviated: No Whipstock: ft (KB)

Time Tool Opened: 19:01:00

Time Test Ended: 22:40:30

Test Type: Bottom Hole (Reset)

Tester: Chuck Kreuzer Jr.

Unit No: 61

**Interval: 3195.00 ft (KB) To 3222.00 ft (KB) (TVD)**

Reference Elevations: 1894.00 ft (KB)

Total Depth: 3195.00 ft (KB) (TVD)

1886.00 ft (CF)

Hole Diameter: 7.88 inches Hole Condition: Good

KB to GR/CF: 8.00 ft

**Serial #: 8791**

**Inside**

Press @ Run Depth: 44.17 psig @ 3198.00 ft (KB)

Capacity: 8000.00 psig

Start Date: 2013.02.17 End Date: 2013.02.17

Last Calib.: 2013.02.17

Start Time: 17:30:01 End Time: 22:40:30

Time On Btm: 2013.02.17 @ 18:53:30

Time Off Btm: 2013.02.17 @ 21:03:30

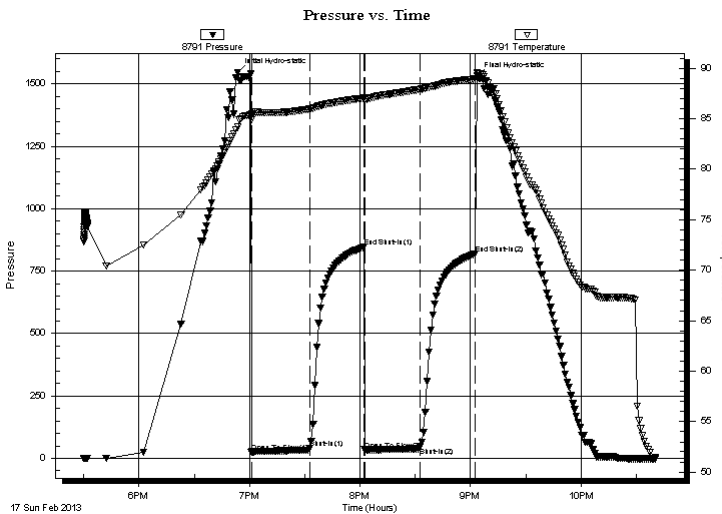
**TEST COMMENT:** IF: Slid 10 ft. to bottom. w eak blow dead in 30 mins.

IS: No blow back

FF: No blow

FS: No blow back

## PRESSURE SUMMARY



Time (Min.)	Pressure (psig)	Temp (deg F)	Annotation
0	1546.23	84.16	Initial Hydro-static
8	24.99	84.90	Open To Flow (1)
39	40.77	85.96	Shut-In(1)
69	846.34	87.07	End Shut-In(1)
69	33.93	86.86	Open To Flow (2)
99	44.17	87.91	Shut-In(2)
129	819.75	88.95	End Shut-In(2)
130	1531.34	89.59	Final Hydro-static

## Recovery

Length (ft)	Description	Volume (bbl)
62.00	mud w ith oil specs	0.30

## Gas Rates

	Choke (inches)	Pressure (psig)	Gas Rate (Mcf/d)

\* Recovery from multiple tests







**TRILOBITE  
TESTING, INC.**

# DRILL STEM TEST REPORT

**TOOL DIAGRAM**

John O Farmer

**17-4s-18w Phillips,KS**

PO Box 352  
Russell KS 67665

**Hanchet B #1**

Job Ticket: 48048

**DST#: 3**

ATTN: Austin Klaus

Test Start: 2013.02.17 @ 17:30:00

## Tool Information

Drill Pipe:	Length: 3065.00 ft	Diameter: 3.80 inches	Volume: 42.99 bbl	Tool Weight: 2000.00 lb
Heavy Wt. Pipe:	Length: 0.00 ft	Diameter: 0.00 inches	Volume: 0.00 bbl	Weight set on Packer: 25000.00 lb
Drill Collar:	Length: 120.00 ft	Diameter: 2.25 inches	Volume: 0.59 bbl	Weight to Pull Loose: 50000.00 lb
			<u>Total Volume: 43.58 bbl</u>	Tool Chased 10.00 ft
Drill Pipe Above KB:	10.00 ft			String Weight: Initial 45000.00 lb
Depth to Top Packer:	3195.00 ft			Final 45000.00 lb
Depth to Bottom Packer:	ft			
Interval between Packers:	27.00 ft			
Tool Length:	47.00 ft			
Number of Packers:	2	Diameter: 6.75 inches		

Tool Comments:

Tool Description	Length (ft)	Serial No.	Position	Depth (ft)	Accum. Lengths
------------------	-------------	------------	----------	------------	----------------

Shut In Tool	5.00			3180.00	
Hydraulic tool	5.00			3185.00	
Packer	5.00			3190.00	20.00 Bottom Of Top Packer
Packer	5.00			3195.00	
Stubb	1.00			3196.00	
Perforations	2.00			3198.00	
Recorder	0.00	8791	Inside	3198.00	
Recorder	0.00	8651	Outside	3198.00	
Perforations	21.00			3219.00	
Bullnose	3.00			3222.00	27.00 Bottom Packers & Anchor
<b>Total Tool Length:</b>	<b>47.00</b>				



**TRILOBITE**  
**TESTING, INC.**

**DRILL STEM TEST REPORT**

**FLUID SUMMARY**

John O Farmer

**17-4s-18w Phillips,KS**

PO Box 352  
Russell KS 67665

**Hanchet B #1**

Job Ticket: 48048

**DST#: 3**

ATTN: Austin Klaus

Test Start: 2013.02.17 @ 17:30:00

**Mud and Cushion Information**

Mud Type: Gel Chem

Cushion Type:

Oil API:

deg API

Mud Weight: 9.00 lb/gal

Cushion Length:

ft

Water Salinity:

ppm

Viscosity: 55.00 sec/qt

Cushion Volume:

bbbl

Water Loss: 7.58 in<sup>3</sup>

Gas Cushion Type:

Resistivity: ohm.m

Gas Cushion Pressure:

psig

Salinity: 400.00 ppm

Filter Cake: 2.00 inches

**Recovery Information**

Recovery Table

Length ft	Description	Volume bbl
62.00	mud w ith oil specs	0.305

Total Length: 62.00 ft      Total Volume: 0.305 bbl

Num Fluid Samples: 0

Num Gas Bombs: 0

Serial #:

Laboratory Name:

Laboratory Location:

Recovery Comments:

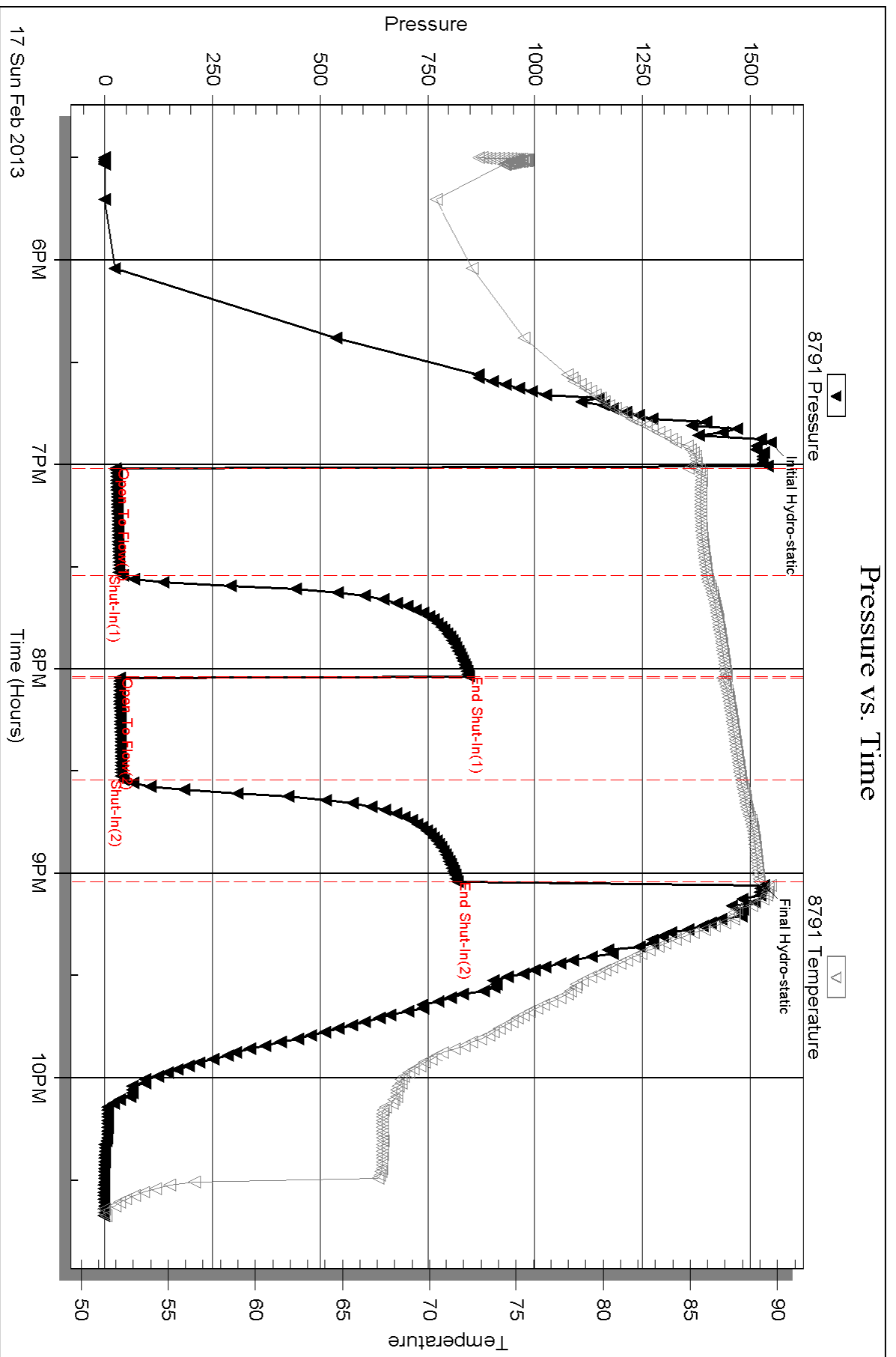
Serial #: 8791

Inside

John O Farmer

Hanchet B #1

DST Test Number: 3

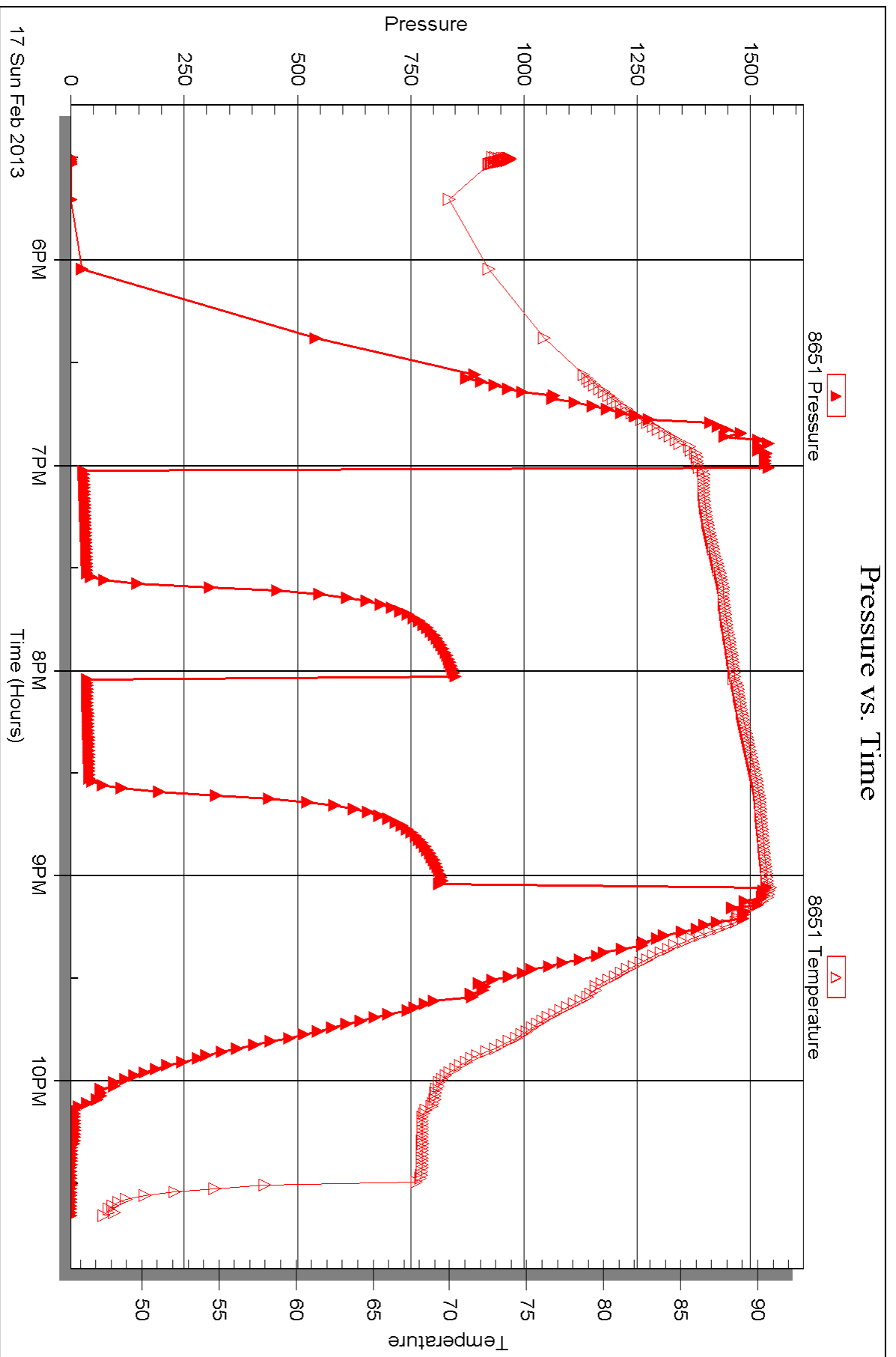


Serial #: 8651

Outside John O Farmer

Hanchet B #1

DST Test Number: 3





## DRILL STEM TEST REPORT

Prepared For: **John O Farmer**

PO Box 352  
Russell KS 67665

ATTN: Austin Klaus

### **Hanchet B #1**

### **17-4s-18w Phillips,KS**

Start Date: 2013.02.18 @ 10:00:00

End Date: 2013.02.18 @ 15:26:30

Job Ticket #: 48049                      DST #: 4

Trilobite Testing, Inc  
PO Box 362 Hays, KS 67601  
ph: 785-625-4778 fax: 785-625-5620

Printed: 2013.02.27 @ 12:14:42

John O Farmer  
17-4s-18w Phillips,KS  
Hanchet B #1  
DST # 4  
LKC-IL  
2013.02.18



**TRILOBITE  
TESTING, INC.**

# DRILL STEM TEST REPORT

John O Farmer

**17-4s-18w Phillips,KS**

PO Box 352  
Russell KS 67665

**Hanchet B #1**

ATTN: Austin Klaus

Job Ticket: 48049

**DST#: 4**

Test Start: 2013.02.18 @ 10:00:00

## GENERAL INFORMATION:

Formation: **LKC-I,L**

Deviated: No Whipstock: ft (KB)

Time Tool Opened: 11:35:00

Time Test Ended: 15:26:30

Test Type: Bottom Hole (Reset)

Tester: Chuck Kreuzer Jr.

Unit No: 61

**Interval: 3234.00 ft (KB) To 3326.00 ft (KB) (TVD)**

Reference Elevations: 1894.00 ft (KB)

Total Depth: 3326.00 ft (KB) (TVD)

1886.00 ft (CF)

Hole Diameter: 7.88 inches Hole Condition: Good

KB to GR/CF: 8.00 ft

**Serial #: 8791**

**Inside**

Press @ RunDepth: 50.43 psig @ 3238.00 ft (KB)

Capacity: 8000.00 psig

Start Date: 2013.02.18

End Date:

2013.02.18

Last Calib.:

2013.02.18

Start Time: 10:00:01

End Time:

15:26:30

Time On Btm:

2013.02.18 @ 11:30:30

Time Off Btm:

2013.02.18 @ 13:44:30

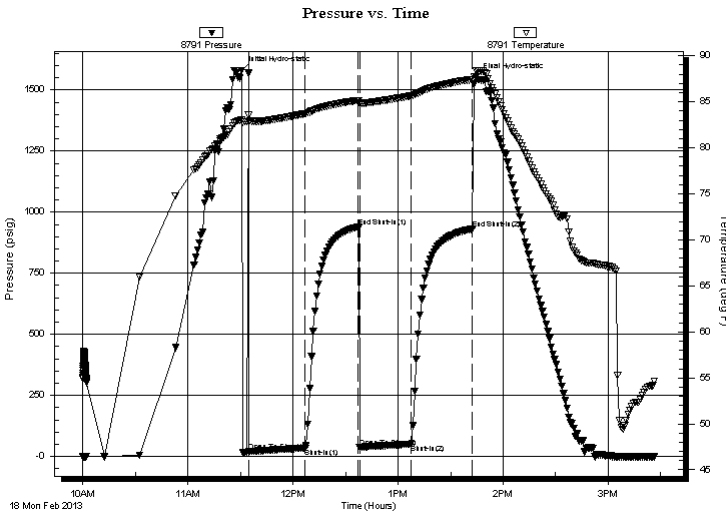
**TEST COMMENT:** IF: Weak blow, Died in 20 mins.

IS: No blow back

FF: No blow

FS: No blow back

## PRESSURE SUMMARY



Time (Min.)	Pressure (psig)	Temp (deg F)	Annotation
0	1580.56	83.02	Initial Hydro-static
5	19.41	82.86	Open To Flow (1)
37	34.78	83.70	Shut-In(1)
67	940.15	85.14	End Shut-In(1)
68	37.69	84.86	Open To Flow (2)
97	50.43	85.64	Shut-In(2)
132	931.62	87.42	End Shut-In(2)
134	1551.99	88.41	Final Hydro-static

## Recovery

Length (ft)	Description	Volume (bbl)
62.00	mud-100%m	0.30

\* Recovery from multiple tests

## Gas Rates

	Choke (inches)	Pressure (psig)	Gas Rate (Mcf/d)







**TRILOBITE  
TESTING, INC.**

# DRILL STEM TEST REPORT

**TOOL DIAGRAM**

John O Farmer

**17-4s-18w Phillips,KS**

PO Box 352  
Russell KS 67665

**Hanchet B #1**

Job Ticket: 48049

**DST#: 4**

ATTN: Austin Klaus

Test Start: 2013.02.18 @ 10:00:00

## Tool Information

Drill Pipe:	Length: 3116.00 ft	Diameter: 3.80 inches	Volume: 43.71 bbl	Tool Weight: 2000.00 lb
Heavy Wt. Pipe:	Length: 0.00 ft	Diameter: 0.00 inches	Volume: 0.00 bbl	Weight set on Packer: 25000.00 lb
Drill Collar:	Length: 120.00 ft	Diameter: 2.25 inches	Volume: 0.59 bbl	Weight to Pull Loose: 55000.00 lb
			<u>Total Volume: 44.30 bbl</u>	Tool Chased 10.00 ft
Drill Pipe Above KB:	22.00 ft			String Weight: Initial 50000.00 lb
Depth to Top Packer:	3234.00 ft			Final 50000.00 lb
Depth to Bottom Packer:	ft			
Interval between Packers:	92.00 ft			
Tool Length:	112.00 ft			
Number of Packers:	2	Diameter: 6.75 inches		

Tool Comments:

Tool Description	Length (ft)	Serial No.	Position	Depth (ft)	Accum. Lengths
------------------	-------------	------------	----------	------------	----------------

Shut In Tool	5.00			3219.00	
Hydraulic tool	5.00			3224.00	
Packer	5.00			3229.00	20.00 Bottom Of Top Packer
Packer	5.00			3234.00	
Stubb	1.00			3235.00	
Perforations	2.00			3237.00	
Change Over Sub	1.00			3238.00	
Recorder	0.00	8791	Inside	3238.00	
Recorder	0.00	8651	Outside	3238.00	
Blank Spacing	62.00			3300.00	
Change Over Sub	1.00			3301.00	
Perforations	22.00			3323.00	
Bullnose	3.00			3326.00	92.00 Bottom Packers & Anchor

**Total Tool Length: 112.00**



**TRILOBITE  
TESTING, INC.**

# DRILL STEM TEST REPORT

**FLUID SUMMARY**

John O Farmer

**17-4s-18w Phillips,KS**

PO Box 352  
Russell KS 67665

**Hanchet B #1**

Job Ticket: 48049

**DST#: 4**

ATTN: Austin Klaus

Test Start: 2013.02.18 @ 10:00:00

## Mud and Cushion Information

Mud Type: Gel Chem

Cushion Type:

Oil API:

deg API

Mud Weight: 9.00 lb/gal

Cushion Length:

ft

Water Salinity:

ppm

Viscosity: 47.00 sec/qt

Cushion Volume:

bbbl

Water Loss: 8.79 in<sup>3</sup>

Gas Cushion Type:

Resistivity: ohm.m

Gas Cushion Pressure:

psig

Salinity: 1000.00 ppm

Filter Cake: 2.00 inches

## Recovery Information

Recovery Table

Length ft	Description	Volume bbl
62.00	mud-100%m	0.305

Total Length: 62.00 ft      Total Volume: 0.305 bbl

Num Fluid Samples: 0

Num Gas Bombs: 0

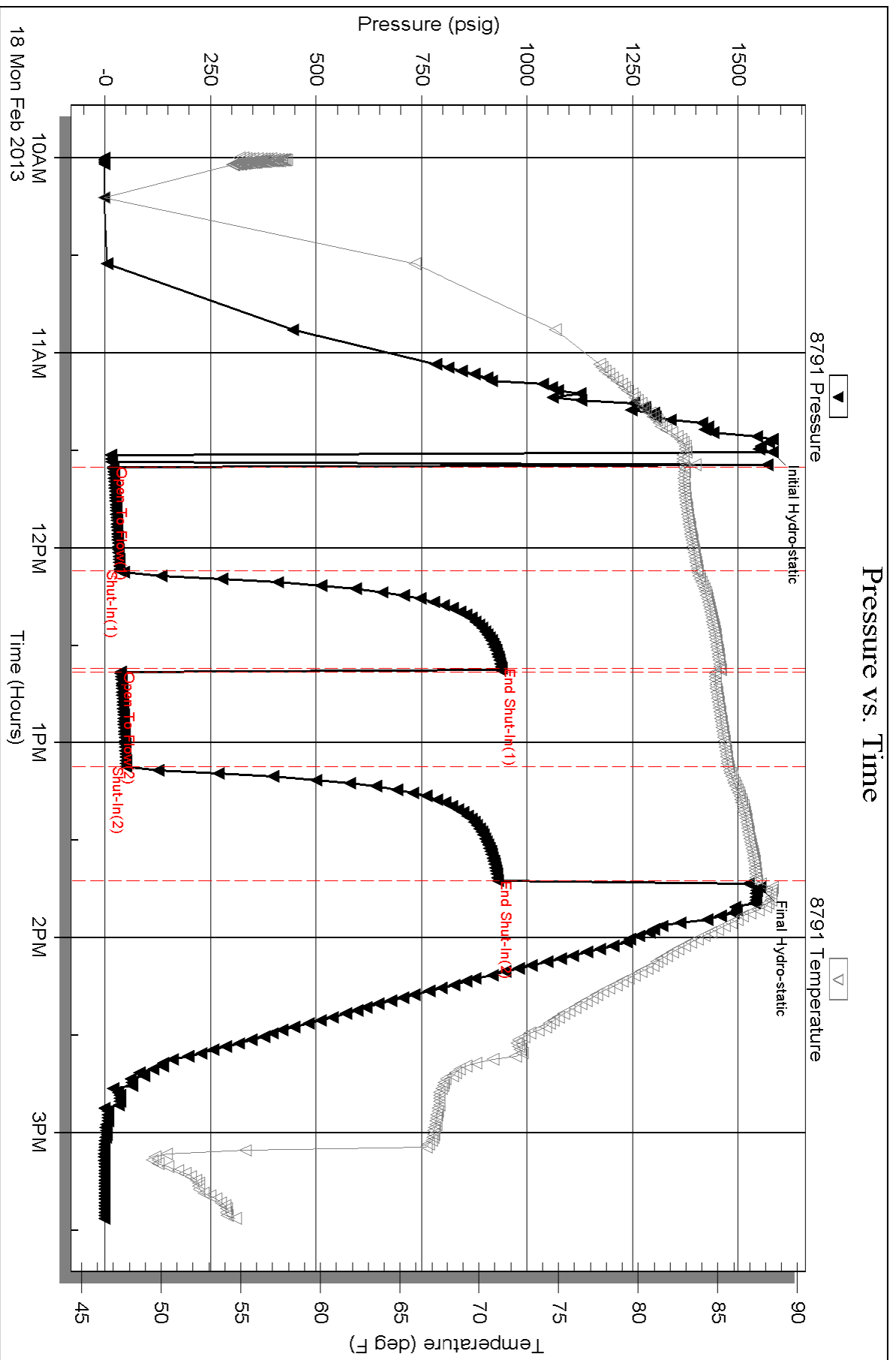
Serial #:

Laboratory Name:

Laboratory Location:

Recovery Comments:

# Pressure vs. Time



Serial #: 8651

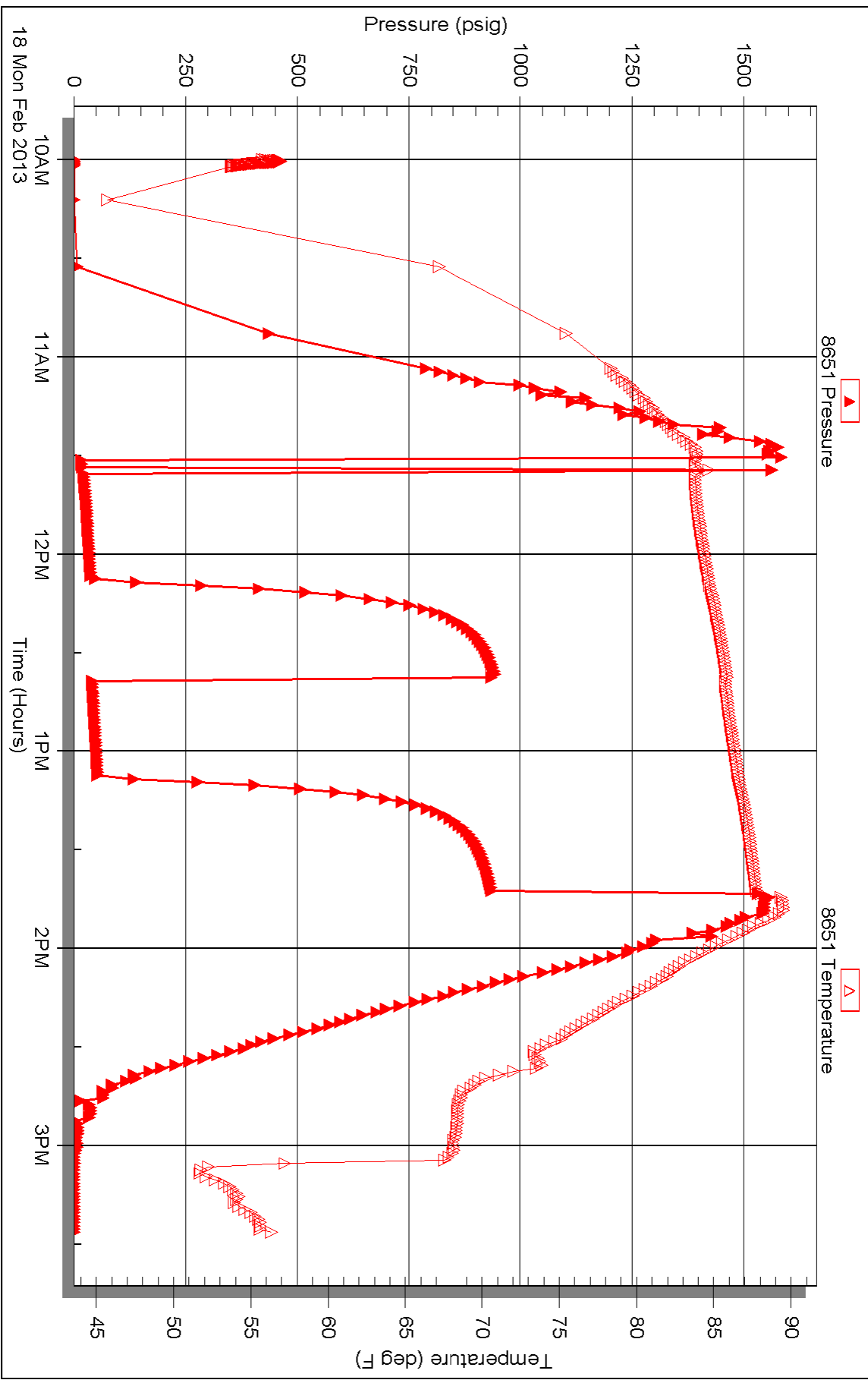
Outside

John O Farmer

Hanchet B #1

DST Test Number: 4

### Pressure vs. Time





# TRILOBITE TESTING INC.

P.O. Box 1733 • Hays, Kansas 67601

## Test Ticket

NO. 48046

Well Name & No. Hanchett B #1 Test No. 1 Date 2-16-2013  
 Company John-D - Farmer Elevation 1894 KB 1886 GL  
 Address 370 W. Wichita Ave P.O. Box 352 Russell Ks. 67665  
 Co. Rep / Geo. Austin Klaus Rig WW#12  
 Location: Sec. 17 Twp. 4S Rge. 18W Co. Phillips State Ks.

Interval Tested 3091 3155 Zone Tested LKC  
 Anchor Length 54 Drill Pipe Run ~~2971~~ 2971 Mud Wt. 8.6  
 Top Packer Depth 3085 Drill Collars Run 120 Vis 55  
 Bottom Packer Depth 3091 Wt. Pipe Run 0- WL 7.6  
 Total Depth 3155 Chlorides 400 ppm System LCM 2#

Blow Description IF: Weak blow, Built to 4in. over 30mins.

ISI: No blow back

FF: Weak blow, Built to 5 in. over 60mins.

FSI: No blow back

Rec	Feet of	%gas	%oil	%water	%mud
<u>212</u>	<u>water</u>			<u>100</u>	

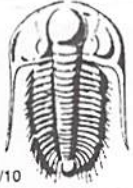
Rec Total 212 BHT 84 Gravity \_\_\_\_\_ API RW \_\_\_\_\_ @ \_\_\_\_\_ °F Chlorides \_\_\_\_\_ ppm

(A) Initial Hydrostatic 1511  Test 1150 T-On Location 14:30  
 (B) First Initial Flow 32  Jars \_\_\_\_\_ T-Started 17:00  
 (C) First Final Flow 99  Safety Joint \_\_\_\_\_ T-Open 18:26  
 (D) Initial Shut-In 547  Circ Sub \_\_\_\_\_ T-Pulled 21:20  
 (E) Second Initial Flow 101  Hourly Standby \_\_\_\_\_ T-Out 23:05  
 (F) Second Final Flow 134  Mileage 70x2 = 140x1.55 <sup>217</sup> Comments Had a long short trip  
 (G) Final Shut-In 507  Sampler \_\_\_\_\_  
 (H) Final Hydrostatic 1503  Straddle \_\_\_\_\_  
 Shale Packer \_\_\_\_\_  
 Ruined Shale Packer \_\_\_\_\_  
 Ruined Packer \_\_\_\_\_  
 Extra Copies \_\_\_\_\_

Initial Open 30  Extra Packer \_\_\_\_\_  
 Initial Shut-In 30  Extra Recorder \_\_\_\_\_ Sub Total 0  
 Final Flow 60  Day Standby \_\_\_\_\_ Total 1367  
 Final Shut-In 60  Accessibility \_\_\_\_\_ MP/DST Disc't \_\_\_\_\_  
 Sub Total 1367

Approved By \_\_\_\_\_ Our Representative Chuck [Signature]

Trilobite Testing Inc. shall not be liable for damaged of any kind of the property or personnel of the one for whom a test is made, or for any loss suffered or sustained, directly or indirectly, through the use of its equipment, or its statements or opinion concerning the results of any test, tools lost or damaged in the hole shall be paid for at cost by the party for whom the test is made.



# TRILOBITE TESTING INC.

P.O. Box 1733 • Hays, Kansas 67601

## Test Ticket

NO. 48047

Well Name & No. Hanchett B #1 Test No. 2 Date 2-17-2013  
 Company John Farmer Elevation 1894 KB 1886 GL \_\_\_\_\_  
 Address 370. W. Wichita Ave P.O. Box 352 Russell Ks. 67665  
 Co. Rep / Geo. Austin Klaus Rig WW#12  
 Location: Sec. 17 Twp. 4S Rge. 18W Co. Phillips State Ks.

Interval Tested 3163 3198 Zone Tested LRC - D.F  
 Anchor Length \_\_\_\_\_ 35 Drill Pipe Run \_\_\_\_\_ Mud Wt. 8.6  
 Top Packer Depth \_\_\_\_\_ 3158 Drill Collars Run 120 Vis 55  
 Bottom Packer Depth \_\_\_\_\_ 3163 Wt. Pipe Run - 0- WL 7.6  
 Total Depth \_\_\_\_\_ 3198 Chlorides 400 ppm System LCM 24

Blow Description IF: Weak blow, Dead in 15 mins.

IST: No blow back

FF: No blow

FST: No blow back

Rec	Feet of	%gas	%oil	%water	%mud
<u>10</u>	<u>Mud with oil specs</u>				
Rec	Feet of	%gas	%oil	%water	%mud
Rec	Feet of	%gas	%oil	%water	%mud
Rec	Feet of	%gas	%oil	%water	%mud
Rec	Feet of	%gas	%oil	%water	%mud

Rec Total 10 BHT 84 Gravity \_\_\_\_\_ API RW \_\_\_\_\_ @ \_\_\_\_\_ °F Chlorides \_\_\_\_\_ ppm

(A) Initial Hydrostatic 1548  Test 1150 T-On Location 5:00  
 (B) First Initial Flow 12  Jars \_\_\_\_\_ T-Started 6:10  
 (C) First Final Flow 16  Safety Joint \_\_\_\_\_ T-Open 7:55  
 (D) Initial Shut-In 587  Circ Sub \_\_\_\_\_ T-Pulled 10:00  
 (E) Second Initial Flow 16  Hourly Standby \_\_\_\_\_ T-Out 11:35  
 (F) Second Final Flow 20  Mileage 70 x 2 = 140 @ 1.55 217 Comments \_\_\_\_\_  
 (G) Final Shut-In 115  Sampler \_\_\_\_\_  
 (H) Final Hydrostatic 155  Straddle \_\_\_\_\_  
 Ruined Shale Packer \_\_\_\_\_  
 Ruined Packer \_\_\_\_\_  
 Extra Copies \_\_\_\_\_

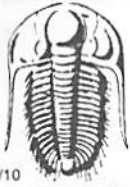
Initial Open 30  Extra Packer \_\_\_\_\_  
 Initial Shut-In 30  Extra Recorder \_\_\_\_\_  
 Final Flow 30  Day Standby \_\_\_\_\_  
 Final Shut-In 30  Accessibility \_\_\_\_\_  
 Sub Total 1367 MP/DST Disc't \_\_\_\_\_

Approved By \_\_\_\_\_

Our Representative Chuck [Signature]

TriLOBITE TESTING Inc. shall not be liable for damaged of any kind of the property or personnel of the one for whom a test is made, or for any loss suffered or sustained, directly or indirectly, through the use of its equipment, or its statements or opinion concerning the results of any test, tools lost or damaged in the hole shall be paid for at cost by the party for whom the test is made.





# TRILOBITE TESTING INC.

P.O. Box 1733 • Hays, Kansas 67601

## Test Ticket

NO. 48048

Well Name & No. Hanchett B#1 Test No. 3 Date 2-17-2013  
 Company John Farmer Elevation 1894 KB 1886 GL  
 Address 370 W. Wichita Ave P.O. Box 352 Russell KS. 67665  
 Co. Rep / Geo. Austin Klaus Rig WV#12  
 Location: Sec. 17 Twp. 4S Rge. 18W Co. Phillips State KS

Interval Tested 3195 3222 Zone Tested LKC - G  
 Anchor Length 27 Drill Pipe Run 3065 Mud Wt. 8.6  
 Top Packer Depth 3190 Drill Collars Run 120 Vis 55  
 Bottom Packer Depth 3195 Wt. Pipe Run 0 WL 7.6  
 Total Depth 3222 Chlorides 400 ppm System LCM 2#

Blow Description IF: sled 10 ft to bottom, weak blow .. Dead in 30 min.  
ISE: No blow back  
FF: No blow  
ISE: No blow back

Rec	Feet of	%gas	%oil	%water	%mud
<u>62</u>	<u>mud with oil specs</u>				

Rec Total 62 BHT 87.2 Gravity \_\_\_\_\_ API RW \_\_\_\_\_ @ \_\_\_\_\_ ° F Chlorides \_\_\_\_\_ ppm

(A) Initial Hydrostatic 1546  Test 1150 T-On Location 17:20  
 (B) First Initial Flow 25  Jars \_\_\_\_\_ T-Started 17:30  
 (C) First Final Flow 41  Safety Joint \_\_\_\_\_ T-Open 19:00  
 (D) Initial Shut-In 846  Circ Sub \_\_\_\_\_ T-Pulled 21:00  
 (E) Second Initial Flow 34  Hourly Standby \_\_\_\_\_ T-Out 22:40  
 (F) Second Final Flow 44  Mileage 70x2 = 140 x 1.55 = 217 Comments \_\_\_\_\_  
 (G) Final Shut-In 820  Sampler \_\_\_\_\_  
 (H) Final Hydrostatic 1531  Straddle \_\_\_\_\_  
 Ruined Shale Packer \_\_\_\_\_  
 Ruined Packer \_\_\_\_\_  
 Extra Copies \_\_\_\_\_

Initial Open 30  
 Initial Shut-In 30  
 Final Flow 30  
 Final Shut-In 30  
 Extra Packer \_\_\_\_\_  
 Extra Recorder \_\_\_\_\_  
 Day Standby \_\_\_\_\_  
 Accessibility \_\_\_\_\_  
 Sub Total 1367 Sub Total 1367 MP/DST Disc't \_\_\_\_\_

Approved By \_\_\_\_\_ Our Representative Chuck Hayes  
 Trilobite Testing Inc. shall not be liable for damaged of any kind of the property or personnel of the one for whom a test is made, or for any loss suffered or sustained, directly or indirectly, through the use of its equipment, or its statements or opinion concerning the results of any test, tools lost or damaged in the hole shall be paid for at cost by the party for whom the test is made.

