

ADVANTAGE ELEVATIONS

OIL FIELD SURVEYORS

BOX 8604 - PRATT, KS 67124
(620) 672-6491

63132

INVOICE NO.

Lotus Operating Company, LLC

OPERATOR

"B" 1

NO.

Piester

FARM

Kiowa

COUNTY

13

S

29s

T

16w

R

575 FSL & 355 FWL of Section

LOCATION

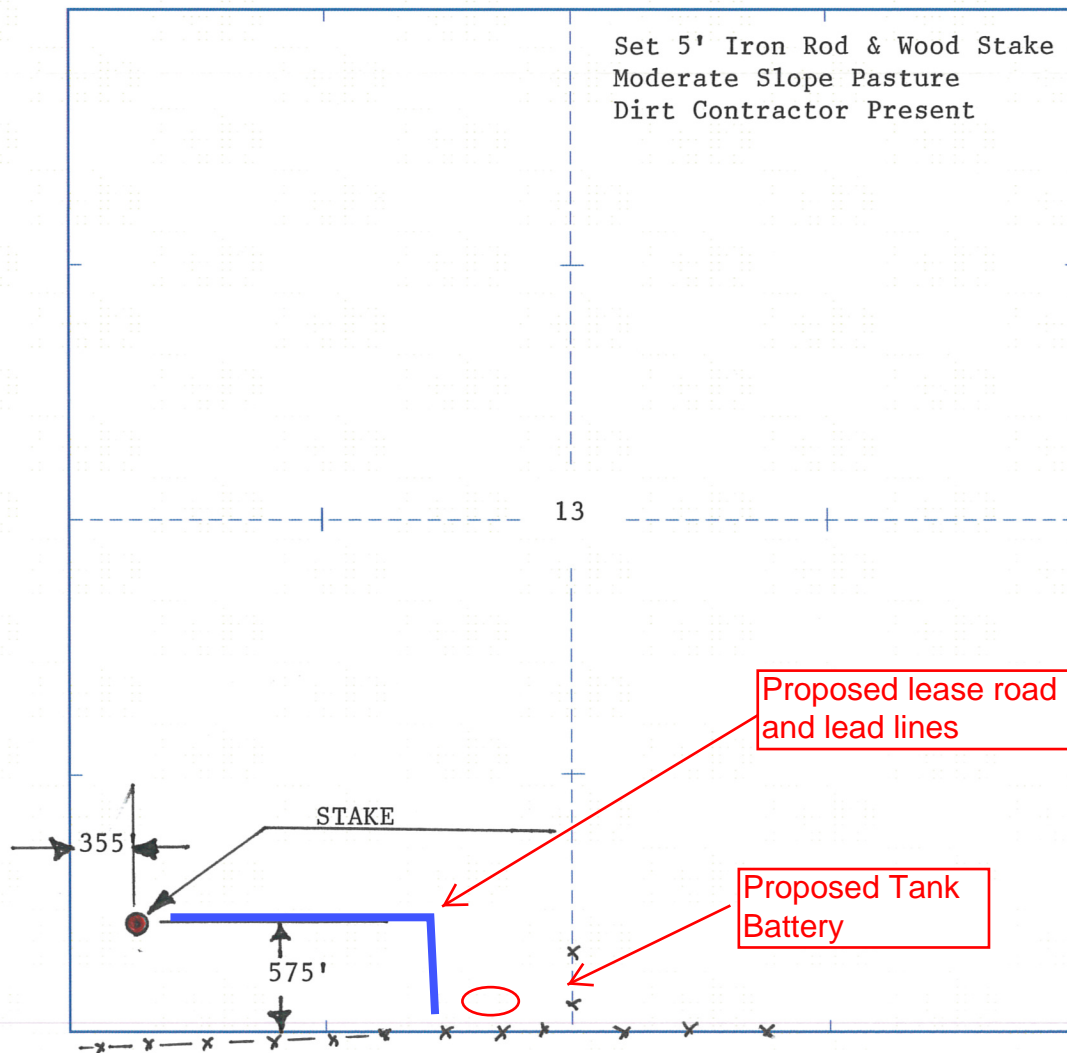
ELEVATION: 1992' Gr.



Lotus Operating Company, LLC
100 South Main
Suite #420
Wichita, Kansas 67202

AUTHORIZED BY: Tim Hallman

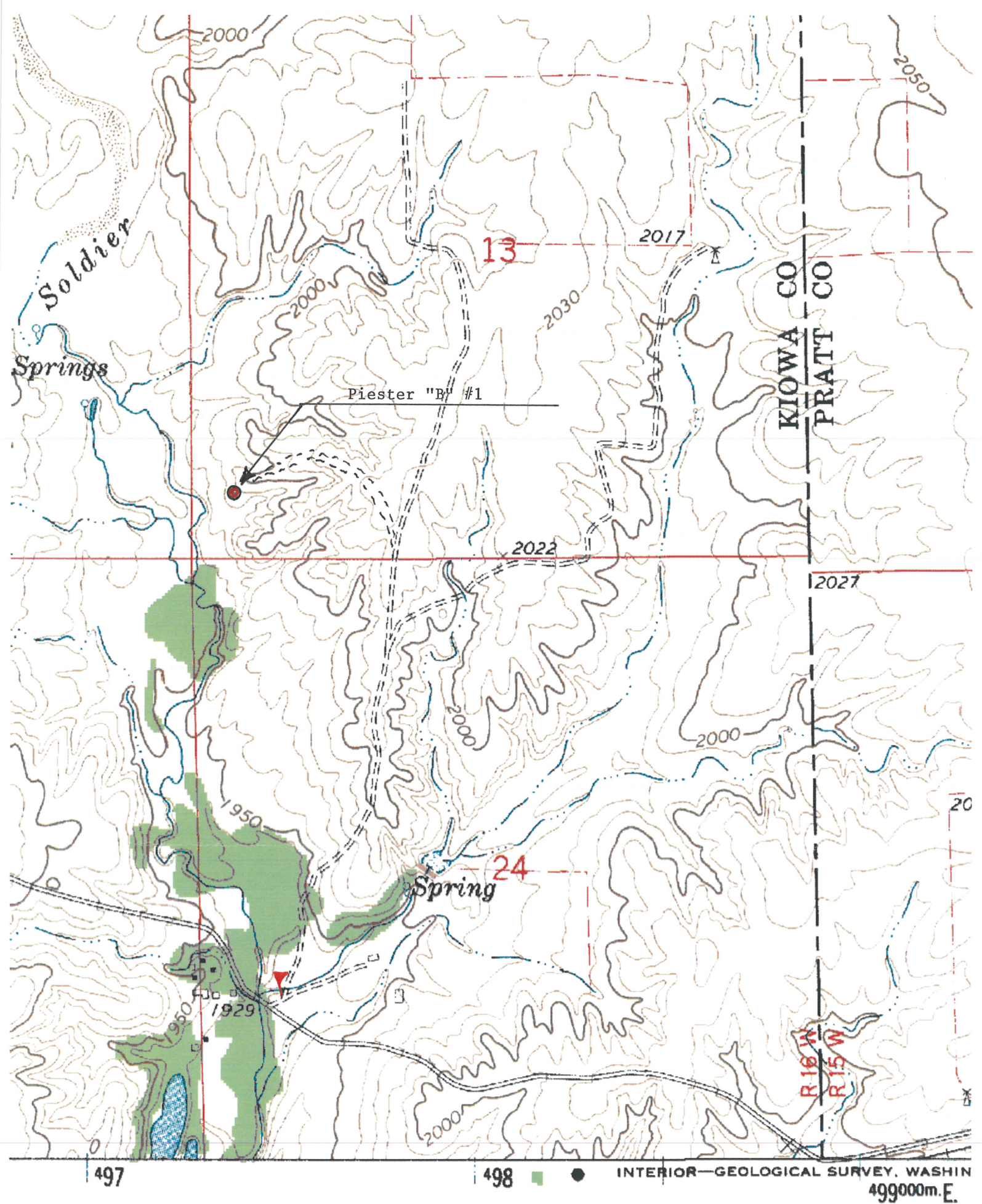
SCALE: 1" = 1000'



Proposed lease road and lead lines

Proposed Tank Battery

DATE STAKED: 6-3-13



"Haviland; KS" Scale: 1" = 0.189Mi 305Mt 1,000Ft, 1 Mi = 5.280" , 1 cm = 120Mt