



DRILL STEM TEST REPORT

Prepared For: **RJM Company**

P.O. Box 256
Clafin Kansas, 67525-0256

ATTN: Kurt Talbott

DD&B Farms #1

34/15s/13w

Start Date: 2013.04.13 @ 01:25:00

End Date: 2013.04.13 @ 08:51:00

Job Ticket #: 17569 DST #: 1

Superior Testers Enterprises LLC
PO Box 138 Great Bend KS 67530
1-800-792-6902

Printed: 2013.04.13 @ 09:21:27

RJM Company
34/15s/13w
DD&B Farms #1
DST # 1
Arbuckle
2013.04.13



DRILL STEM TEST REPORT

RJM Company
 P.O. Box 256
 Claflin Kansas, 67525-0256
 ATTN: Kurt Talbott

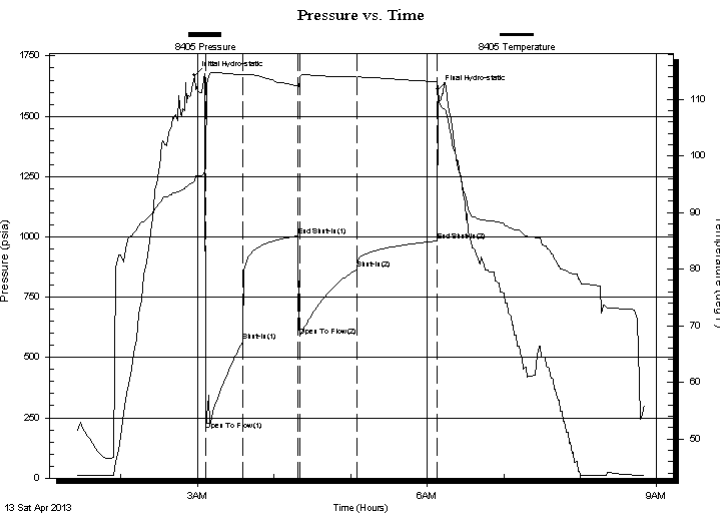
34/15s/13w
DD&B Farms #1
 Job Ticket: 17569 **DST#: 1**
 Test Start: 2013.04.13 @ 01:25:00

GENERAL INFORMATION:

Formation: **Arbuckle**
 Deviated: No Whipstock: ft (KB)
 Time Tool Opened: 03:06:30
 Time Test Ended: 08:51:00
 Interval: **3292.00 ft (KB) To 3311.00 ft (KB) (TVD)**
 Total Depth: 3311.00 ft (KB) (TVD)
 Hole Diameter: 7.88 inches Hole Condition: Poor
 Test Type: Conventional Bottom Hole (Initial)
 Tester: Shane Konzem
 Unit No: 3330/50/Great Bend
 Reference Elevations: 1852.00 ft (KB)
 1843.00 ft (CF)
 KB to GR/CF: 9.00 ft

Serial #: 8405 Inside
 Press @ Run Depth: 865.17 psia @ 3307.00 ft (KB) Capacity: 5000.00 psia
 Start Date: 2013.04.13 End Date: 2013.04.13 Last Calib.: 2013.04.13
 Start Time: 01:25:00 End Time: 08:51:00 Time On Btm: 2013.04.13 @ 02:57:30
 Time Off Btm: 2013.04.13 @ 06:08:30

TEST COMMENT: 1st Open. 30 Minutes. Strong blow built to bottom of a 5 gallon bucket in 1 minute 40 seconds.
 1st Shut In. 30 Minutes. No blow back.
 2nd Open. 30 Minutes. Strong blow built to bottom of 5 gallon bucket in 3 minutes.
 2nd Shut In. 30 Minutes. No blow back.



PRESSURE SUMMARY

Time (Min.)	Pressure (psia)	Temp (deg F)	Annotation
0	1670.36	95.60	Initial Hydro-static
9	200.51	98.14	Open To Flow (1)
38	566.34	114.36	Shut-In(1)
82	1005.03	112.44	End Shut-In(1)
83	588.65	113.33	Open To Flow (2)
128	865.17	113.93	Shut-In(2)
190	983.34	113.11	End Shut-In(2)
191	1612.20	112.05	Final Hydro-static

Recovery

Length (ft)	Description	Volume (bbl)
5.00	100% clean oil	0.07
600.00	oil cut w ater	8.42
0.00	10% oil, 90% w ater	0.00
700.00	oil cut mud	9.82
0.00	5% oil, 95% w ater	0.00
679.00	100% w ater	9.52

Gas Rates

	Choke (inches)	Pressure (psia)	Gas Rate (Mcf/d)



DRILL STEM TEST REPORT

RJM Company
 P.O. Box 256
 Claflin Kansas, 67525-0256
 ATTN: Kurt Talbott

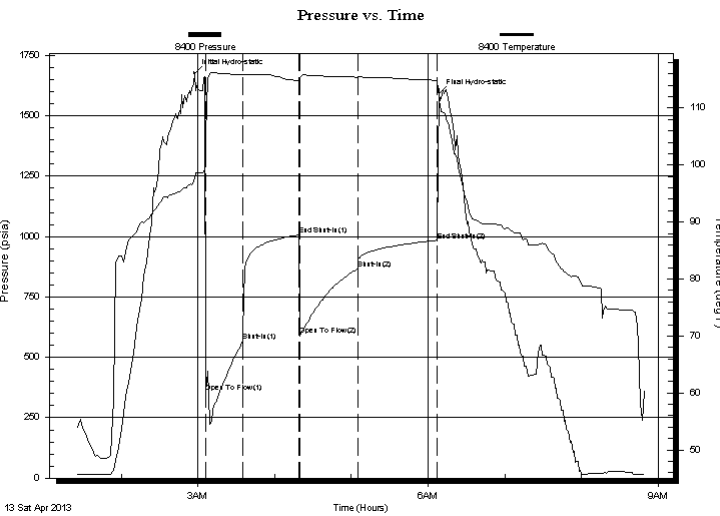
34/15s/13w
DD&B Farms #1
 Job Ticket: 17569 **DST#: 1**
 Test Start: 2013.04.13 @ 01:25:00

GENERAL INFORMATION:

Formation: **Arbuckle**
 Deviated: No Whipstock: ft (KB)
 Test Type: Conventional Bottom Hole (Initial)
 Time Tool Opened: 03:06:30
 Tester: Shane Konzem
 Time Test Ended: 08:51:00
 Unit No: 3330/50/Great Bend
 Interval: **3292.00 ft (KB) To 3311.00 ft (KB) (TVD)**
 Reference Elevations: 1852.00 ft (KB)
 Total Depth: 3311.00 ft (KB) (TVD) 1843.00 ft (CF)
 Hole Diameter: 7.88 inches Hole Condition: Poor KB to GR/CF: 9.00 ft

Serial #: 8400 Outside
 Press @ Run Depth: 983.15 psia @ 3308.00 ft (KB) Capacity: 5000.00 psia
 Start Date: 2013.04.13 End Date: 2013.04.13 Last Calib.: 2013.04.13
 Start Time: 01:25:00 End Time: 08:50:00 Time On Btm: 2013.04.13 @ 02:57:30
 Time Off Btm: 2013.04.13 @ 06:09:00

TEST COMMENT: 1st Open. 30 Minutes. Strong blow built to bottom of a 5 gallon bucket in 1 minute 40 seconds.
 1st Shut In. 30 Minutes. No blow back.
 2nd Open. 30 Minutes. Strong blow built to bottom of 5 gallon bucket in 3 minutes.
 2nd Shut In. 30 Minutes. No blow back.



PRESSURE SUMMARY

Time (Min.)	Pressure (psia)	Temp (deg F)	Annotation
0	1676.10	97.85	Initial Hydro-static
9	357.81	105.45	Open To Flow (1)
38	565.35	115.84	Shut-In(1)
82	1006.46	114.87	End Shut-In(1)
83	591.71	115.18	Open To Flow (2)
128	867.50	115.44	Shut-In(2)
190	983.15	114.93	End Shut-In(2)
192	1591.91	111.05	Final Hydro-static

Recovery

Length (ft)	Description	Volume (bbl)
5.00	100% clean oil	0.07
600.00	oil cut w ater	8.42
0.00	10% oil, 90% w ater	0.00
700.00	oil cut mud	9.82
0.00	5% oil, 95% w ater	0.00
679.00	100% w ater	9.52

Gas Rates

	Choke (inches)	Pressure (psia)	Gas Rate (Mcf/d)



DRILL STEM TEST REPORT

TOOL DIAGRAM

RJM Company
 P.O. Box 256
 Claflin Kansas, 67525-0256
 ATTN: Kurt Talbott

34/15s/13w
DD&B Farms #1
 Job Ticket: 17569 **DST#: 1**
 Test Start: 2013.04.13 @ 01:25:00

Tool Information

Drill Pipe:	Length: 3308.00 ft	Diameter: 3.80 inches	Volume: 46.40 bbl	Tool Weight:	2000.00 lb
Heavy Wt. Pipe:	Length: 0.00 ft	Diameter: 0.00 inches	Volume: 0.00 bbl	Weight set on Packer:	20000.00 lb
Drill Collar:	Length: 0.00 ft	Diameter: 0.00 inches	Volume: 0.00 bbl	Weight to Pull Loose:	58000.00 lb
			<u>Total Volume: 46.40 bbl</u>	Tool Chased	0.00 ft
Drill Pipe Above KB:	36.00 ft			String Weight: Initial	36000.00 lb
Depth to Top Packer:	3292.00 ft			Final	46000.00 lb
Depth to Bottom Packer:	ft				
Interval between Packers:	19.00 ft				
Tool Length:	39.00 ft				
Number of Packers:	2	Diameter: 6.75 inches			

Tool Comments:

Tool Description	Length (ft)	Serial No.	Position	Depth (ft)	Accum. Lengths
SHut-InTool	5.00		Inside	3277.00	
Hydraulic Tool	5.00			3282.00	
Packer	5.00			3287.00	20.00 Bottom Of Top Packer
Packer	5.00			3292.00	
Anchor	14.00			3306.00	
Recorder	1.00	8405	Inside	3307.00	
Recorder	1.00	8400	Outside	3308.00	
Bullnose	3.00			3311.00	19.00 Bottom Packers & Anchor

Total Tool Length: 39.00



DRILL STEM TEST REPORT

FLUID SUMMARY

RJM Company

34/15s/13w

P.O. Box 256
Clafin Kansas, 67525-0256

DD&B Farms #1

Job Ticket: 17569

DST#: 1

ATTN: Kurt Talbott

Test Start: 2013.04.13 @ 01:25:00

Mud and Cushion Information

Mud Type: Gel Chem

Cushion Type:

Oil API:

deg API

Mud Weight: 9.00 lb/gal

Cushion Length:

ft

Water Salinity:

ppm

Viscosity: 51.00 sec/qt

Cushion Volume:

bbbl

Water Loss: 8.40 in³

Gas Cushion Type:

Resistivity: ohm.m

Gas Cushion Pressure:

psia

Salinity: 4500.00 ppm

Filter Cake: inches

Recovery Information

Recovery Table

Length ft	Description	Volume bbl
5.00	100% clean oil	0.070
600.00	oil cut w ater	8.416
0.00	10% oil, 90% w ater	0.000
700.00	oil cut mud	9.819
0.00	5% oil, 95% w ater	0.000
679.00	100% w ater	9.525
0.00	0 feet of gas in pipe	0.000
0.00	Chloride recov. 17000 ppm	0.000
0.00	Resist recov. .21 ohms at 5 degrees.	0.000

Total Length: 1984.00 ft Total Volume: 27.830 bbl

Num Fluid Samples: 0

Num Gas Bombs: 0

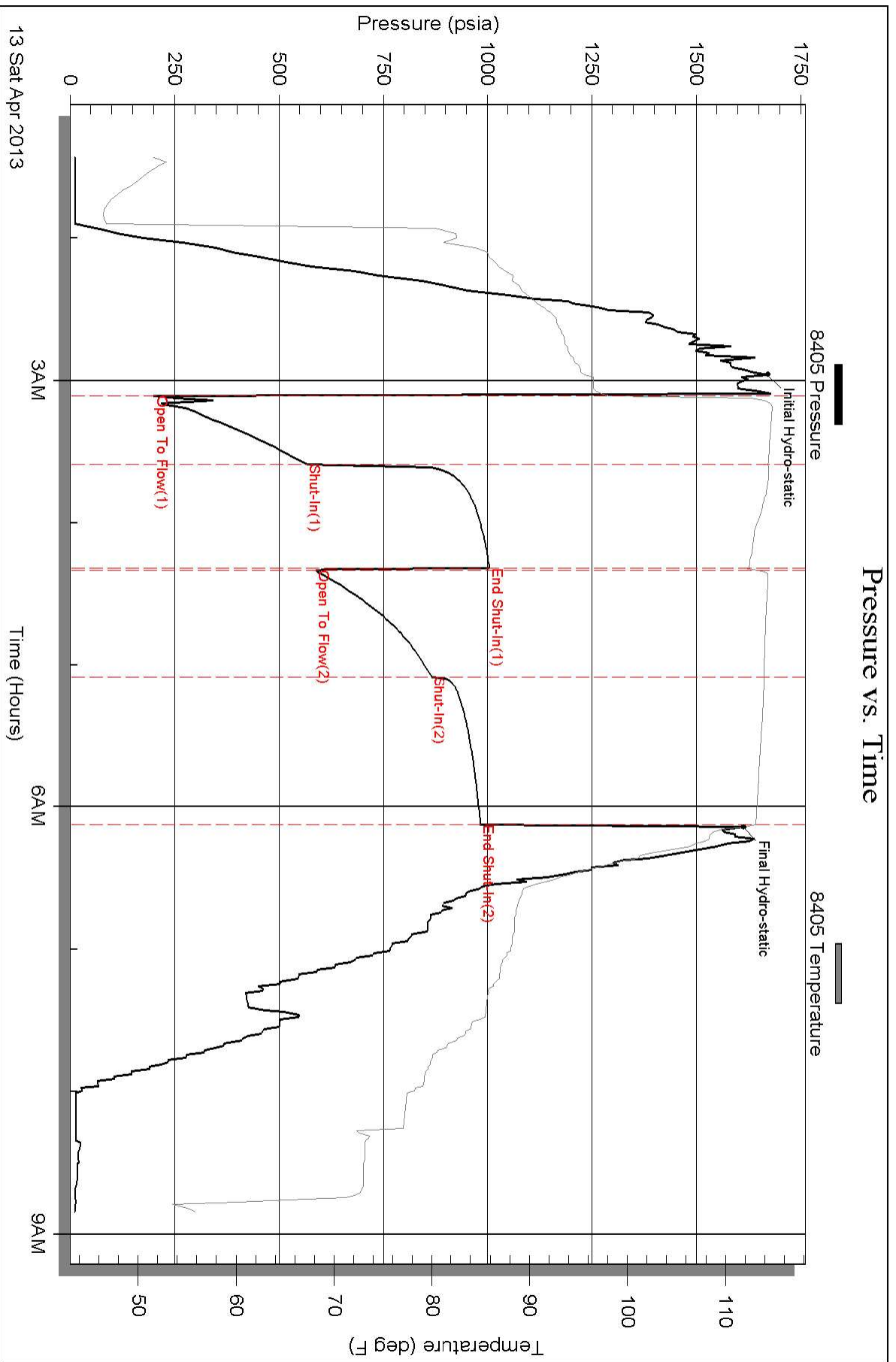
Serial #:

Laboratory Name:

Laboratory Location:

Recovery Comments:

Pressure vs. Time



Pressure vs. Time

