



DRILL STEM TEST REPORT

Prepared For: **McCoy Petroleum Corporation**

8080 E Central STE 300
Wichita KS 67206 - 2366

ATTN: Dave Williams

Fitzgerald A #4-30

30-30s-31w Haskell,KS

Start Date: 2013.05.10 @ 09:25:00

End Date: 2013.05.10 @ 18:55:45

Job Ticket #: 53064 DST #: 1

Trilobite Testing, Inc

PO Box 362 Hays, KS 67601

ph: 785-625-4778 fax: 785-625-5620

Printed: 2013.05.17 @ 09:27:49



**TRILOBITE
TESTING, INC.**

DRILL STEM TEST REPORT

McCoy Petroleum Corporation

30-30s-31w Haskell, KS

8080 E Central STE 300
Wichita KS 67206 - 2366

Fitzgerald A #4-30

ATTN: Dave Williams

Job Ticket: 53064

DST#: 1

Test Start: 2013.05.10 @ 09:25:00

GENERAL INFORMATION:

Formation: **Atoka - Morrow SS**

Deviated: No Whipstock: ft (KB)

Time Tool Opened: 12:14:15

Time Test Ended: 18:55:45

Test Type: Conventional Bottom Hole (Initial)

Tester: Jace McKinney

Unit No: 46

Interval: 5270.00 ft (KB) To 5350.00 ft (KB) (TVD)

Reference Elevations: 2858.00 ft (KB)

Total Depth: 5350.00 ft (KB) (TVD)

2845.00 ft (CF)

Hole Diameter: 7.88 inches Hole Condition: Fair

KB to GR/CF: 13.00 ft

Serial #: 8650 Outside

Press @ Run Depth: 104.75 psig @ 5215.00 ft (KB)

Capacity: 8000.00 psig

Start Date: 2013.05.10 End Date: 2013.05.10

Last Calib.: 2013.05.10

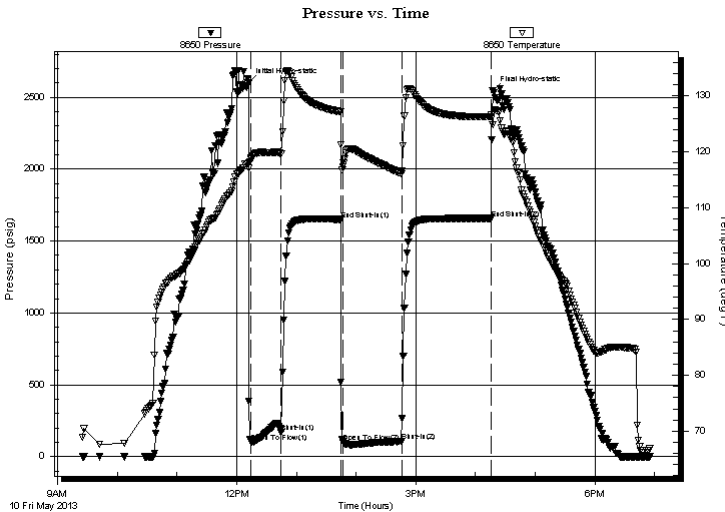
Start Time: 09:25:15 End Time: 18:55:45

Time On Btm: 2013.05.10 @ 12:12:00

Time Off Btm: 2013.05.10 @ 16:17:15

TEST COMMENT: B.O.B. in 30 seconds. GTS in 28 min
Bled off for 5 min. B.O.B. as soon as I closed the 2" valve
B.O.B as soon as I opened
Bled off for 5 min. B.O.B. as soon as I closed the 2" valve

PRESSURE SUMMARY



Time (Min.)	Pressure (psig)	Temp (deg F)	Annotation
0	2600.04	117.98	Initial Hydro-static
3	102.56	118.68	Open To Flow (1)
33	169.13	119.73	Shut-In(1)
93	1651.40	127.20	End Shut-In(1)
95	102.68	117.39	Open To Flow (2)
154	104.75	116.04	Shut-In(2)
244	1658.44	126.28	End Shut-In(2)
246	2545.09	124.94	Final Hydro-static

Recovery

Length (ft)	Description	Volume (bbl)
192.00	gcm 10%G 90%M	0.94
0.00	GTS	0.00

Gas Rates

	Choke (inches)	Pressure (psig)	Gas Rate (Mcf/d)
First Gas Rate	0.50	15.00	198.32
Last Gas Rate	0.50	20.00	232.05
Max. Gas Rate	0.50	20.00	232.05



**TRILOBITE
TESTING, INC.**

DRILL STEM TEST REPORT

TOOL DIAGRAM

McCoy Petroleum Corporation

30-30s-31w Haskell, KS

8080 E Central STE 300
Wichita KS 67206 - 2366

Fitzgerald A #4-30

Job Ticket: 53064

DST#: 1

ATTN: Dave Williams

Test Start: 2013.05.10 @ 09:25:00

Tool Information

Drill Pipe:	Length: 4920.13 ft	Diameter: 3.80 inches	Volume: 69.02 bbl	Tool Weight: 2500.00 lb
Heavy Wt. Pipe:	Length: ft	Diameter: 0.00 inches	Volume: 0.00 bbl	Weight set on Packer: 30000.00 lb
Drill Collar:	Length: 297.86 ft	Diameter: 2.25 inches	Volume: 1.46 bbl	Weight to Pull Loose: 108000.0 lb
			<u>Total Volume: 70.48 bbl</u>	Tool Chased 0.00 ft
Drill Pipe Above KB:	31.49 ft			String Weight: Initial 90000.00 lb
Depth to Top Packer:	5214.00 ft			Final 93000.00 lb
Depth to Bottom Packer:	ft			
Interval between Packers:	80.00 ft			
Tool Length:	107.50 ft			
Number of Packers:	2	Diameter: 6.75 inches		

Tool Comments:

Tool Description	Length (ft)	Serial No.	Position	Depth (ft)	Accum. Lengths
------------------	-------------	------------	----------	------------	----------------

Change Over Sub	1.00			5187.50	
Shut In Tool	5.00			5192.50	
Hydraulic tool	5.00			5197.50	
Jars	5.00			5202.50	
Safety Joint	2.50			5205.00	
Packer	5.00			5210.00	27.50 Bottom Of Top Packer
Packer	4.00			5214.00	
Stubb	1.00			5215.00	
Recorder	0.00	8675	Inside	5215.00	
Recorder	0.00	8650	Outside	5215.00	
Perforations	11.00			5226.00	
Change Over Sub	1.00			5227.00	
Drill Pipe	63.00			5290.00	
Change Over Sub	1.00			5291.00	
Bullnose	3.00			5294.00	80.00 Bottom Packers & Anchor

Total Tool Length: 107.50



**TRILOBITE
TESTING, INC.**

DRILL STEM TEST REPORT

FLUID SUMMARY

McCoy Petroleum Corporation

30-30s-31w Haskell, KS

8080 E Central STE 300
Wichita KS 67206 - 2366

Fitzgerald A #4-30

Job Ticket: 53064

DST#: 1

ATTN: Dave Williams

Test Start: 2013.05.10 @ 09:25:00

Mud and Cushion Information

Mud Type: Gel Chem

Cushion Type:

Oil API:

deg API

Mud Weight: 9.00 lb/gal

Cushion Length:

ft

Water Salinity:

ppm

Viscosity: 51.00 sec/qt

Cushion Volume:

bbbl

Water Loss: 10.78 in³

Gas Cushion Type:

Resistivity: ohm.m

Gas Cushion Pressure:

psig

Salinity: 2500.00 ppm

Filter Cake: 1.00 inches

Recovery Information

Recovery Table

Length ft	Description	Volume bbl
192.00	gcm 10%G 90%M	0.944
0.00	GTS	0.000

Total Length: 192.00 ft Total Volume: 0.944 bbl

Num Fluid Samples: 0

Num Gas Bombs: 0

Serial #:

Laboratory Name:

Laboratory Location:

Recovery Comments:



**TRILOBITE
TESTING, INC.**

DRILL STEM TEST REPORT

GAS RATES

McCoy Petroleum Corporation

30-30s-31w Haskell, KS

8080 E Central STE 300
Wichita KS 67206 - 2366

Fitzgerald A #4-30

Job Ticket: 53064

DST#: 1

ATTN: Dave Williams

Test Start: 2013.05.10 @ 09:25:00

Gas Rates Information

Temperature: 59 (deg F)
Relative Density: 0.65
Z Factor: 0.8

Gas Rates Table

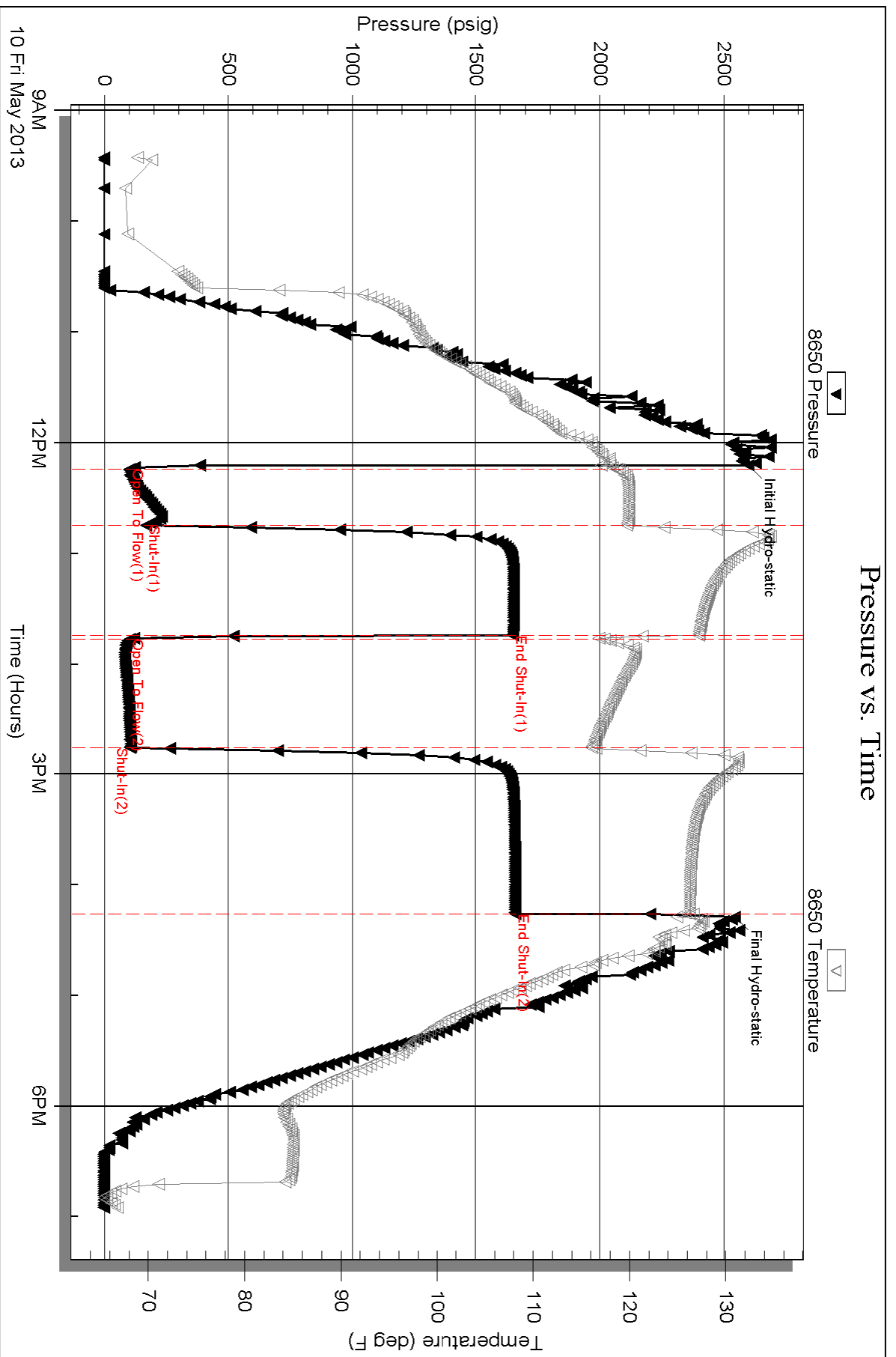
Flow Period	Elapsed Time	Choke (inches)	Pressure (psig)	Gas Rate (Mcf/d)
2	0	0.50	15.00	198.32
2	5	0.50	15.00	198.32
2	10	0.50	15.00	198.32
2	15	0.50	15.00	198.32
2	20	0.50	18.00	218.56
2	25	0.50	18.00	218.56
2	30	0.50	20.00	232.05
2	35	0.50	20.00	232.05
2	40	0.50	20.00	232.05
2	45	0.50	20.00	232.05
2	50	0.50	20.00	232.05
2	55	0.50	20.00	232.05
2	60	0.50	20.00	232.05

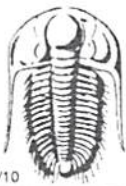
Serial #: 8650

Outside McCoy Petroleum Corporation

Fitzgerald A #4-30

DST Test Number: 1





TRILOBITE TESTING INC.

1515 Commerce Parkway • Hays, Kansas 67601

Test Ticket

NO. 53064

Well Name & No. Fitzgerald "A" #4-30 Test No. 1 Date 5/10/13
 Company McCoy Petroleum Corporation Elevation 2858 KB 2845 GL
 Address 8080 E Central STE 300 Wichita KS 67206-2366
 Co. Rep / Geo. Dave Williams Rig Starling Rig 5
 Location: Sec. 30 Twp. 30S Rge. 3W Co. Haskell Co. State KS

Interval Tested 5270-5350 Zone Tested Aloka - Morrow SS.
 Anchor Length 80 Drill Pipe Run 4920.13 Mud Wt. 9.3
 Top Packer Depth 5266 Drill Collars Run 297.86 Vis 51
 Bottom Packer Depth 5270 Wt. Pipe Run _____ WL 10.8
 Total Depth 5350 Chlorides 2,500 ppm System LCM 2#

Blow Description B.O.B. in 30sec.
Bled for 5 min. B.O.B. as soon as I closed 2" Valve
B.O.B. as soon as I open

Bled for 5 min. B.O.B. as soon as I closed 2" Valve

Rec	Feet of	%gas	%oil	%water	%mud
<u>0</u>	<u>3635 Feet GAS In Pipe</u>				
<u>192</u>	<u>6CM</u>	<u>10</u>			<u>90</u>
Rec _____	Feet of _____	%gas	%oil	%water	%mud
Rec _____	Feet of _____	%gas	%oil	%water	%mud
Rec _____	Feet of _____	%gas	%oil	%water	%mud

Rec Total 192 BHT 125 Gravity _____ API RW _____ @ _____ ° F Chlorides _____ ppm
 (A) Initial Hydrostatic 2,600 Test 1350 T-On Location 6:40
 (B) First Initial Flow 103 Jars 250 T-Started 9:25
 (C) First Final Flow 169 Safety Joint 75 T-Open 12:12
 (D) Initial Shut-In 1,651 Circ Sub N/C T-Pulled 16:12
 (E) Second Initial Flow 103 Hourly Standby 1hr 1.25h 125 T-Out 18:56
 (F) Second Final Flow 105 Mileage 190 MT 294.50
 (G) Final Shut-In 1,658 Sampler _____
 (H) Final Hydrostatic 2,545 Straddle _____

Initial Open 30 Shale Packer _____ Ruined Shale Packer _____
 Initial Shut-In 60 Shale Packer _____ Ruined Packer _____
 Final Flow 60 Extra Packer _____ Extra Copies _____
 Final Shut-In 90 Extra Recorder _____ Sub Total 0
 Day Standby _____ Total 2094.50
 Accessibility _____ MP/DST Disc't _____
 Sub Total 2094.50

Approved By D. P. Williams Our Representative [Signature]
 Trilobite Testing Inc. shall not be liable for damaged of any kind of the property or personnel of the one for whom a test is made, or for any loss suffered or sustained, directly or indirectly, through the use of its equipment, or its statements or opinion concerning the results of any test, tools lost or damaged in the hole shall be paid for at cost by the party for whom the test is made.



TRILOBITE TESTING INC.

P.O. Box 1733 • Hays, Kansas 67601

Gas Volume Report

McCoy Petroleum Corp.
Operator

Fitzgerald "A" #4-30
Well Name and No.

1
DST No.

Min.	Ins. of Water PSIG	Orifice Size	CF/D	Min.	Ins. of Water PSIG	Orifice Size	CF/D
	First open			0	15	1/2	198.323
caught sample @ 28 mins				5	15	1/2	" "
				10	15	1/2	" "
				15	15	1/2	" "
				20	18	1/2	218.560
				25	18	1/2	" "
				30	20	1/2	232.052
				35	20	1/2	" "
				40	20	1/2	" "
				45	20	1/2	" "
				50	20	1/2	" "
			Caught second open sample →	55	20	1/2	" "
				60	20	1/2	" "

Remarks: