



Fall & Associates

Stake and Elevation Service

719 W. 5th Street

P.O. Box 404

Concordia, KS. 66901

1-800-536-2821

Date 6-6-13

Invoice Number 0604132

GORE OIL COMPANY

2

Lynd 'B'

Operator

Number

Farm Name

Trego-KS

28

11s

21w

1190'FNL 2140'FWL

County-State

S

T

R

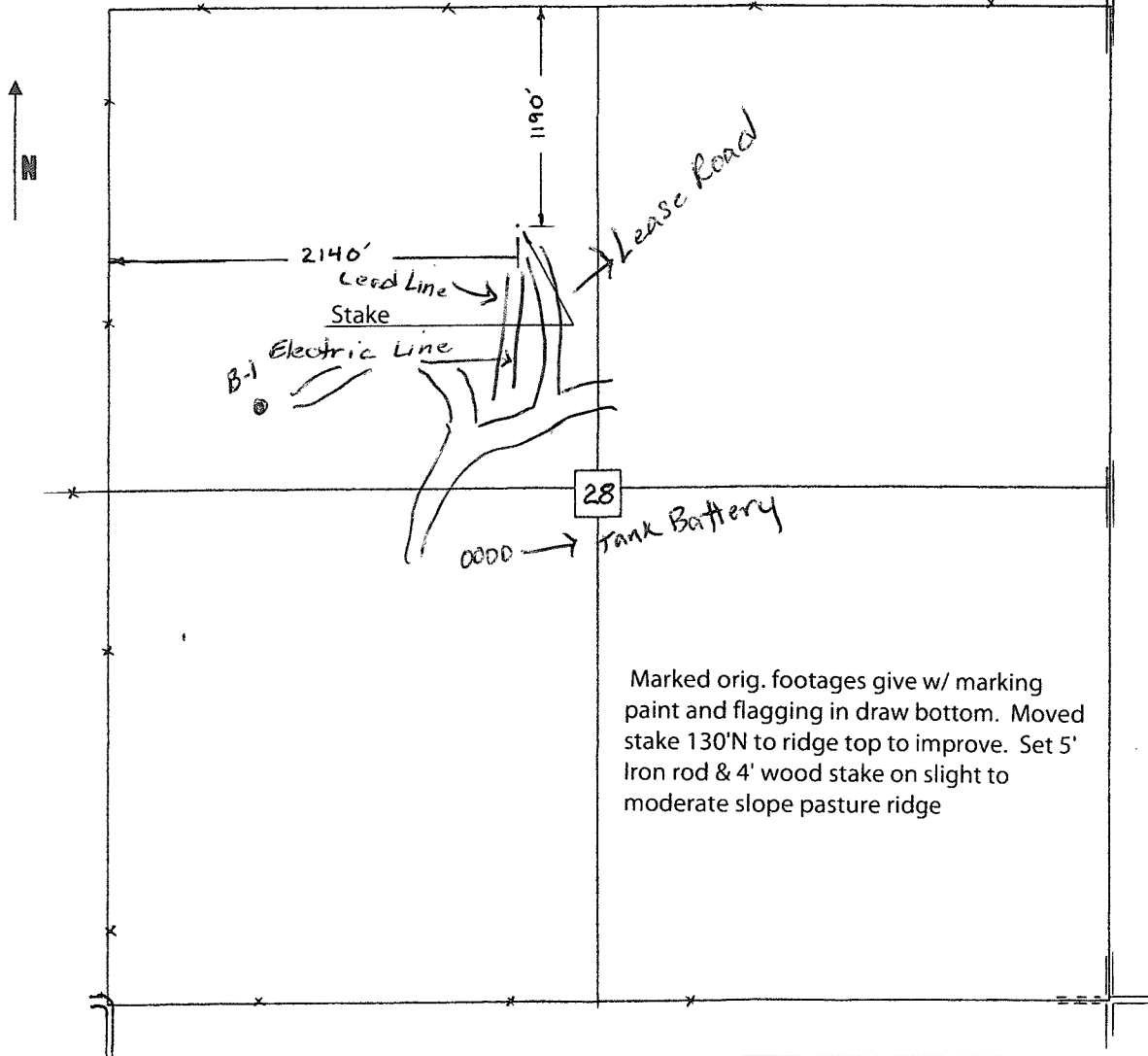
Location

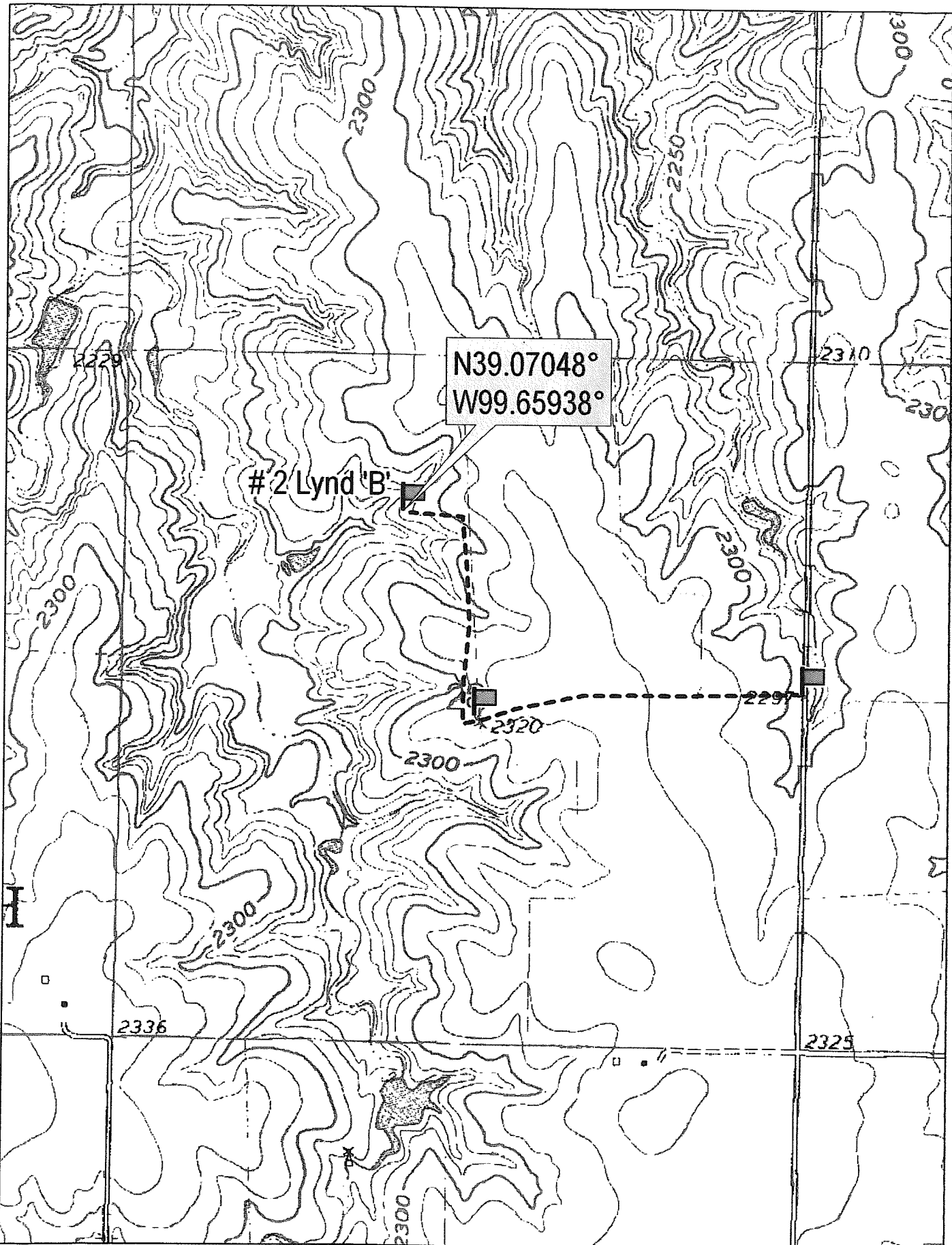
Gore Oil Company
P.O. Box 2757
Wichita, KS. 67201

Elevation 2286 Gr.

Ordered By: Becky

Scale 1"=1000'





N39.07048°
W99.65938°

#2 Lynd 'B'



© 2002 DeLorme. 3-D TopoQuads ©. Data copyright of content owner.
www.delorme.com

