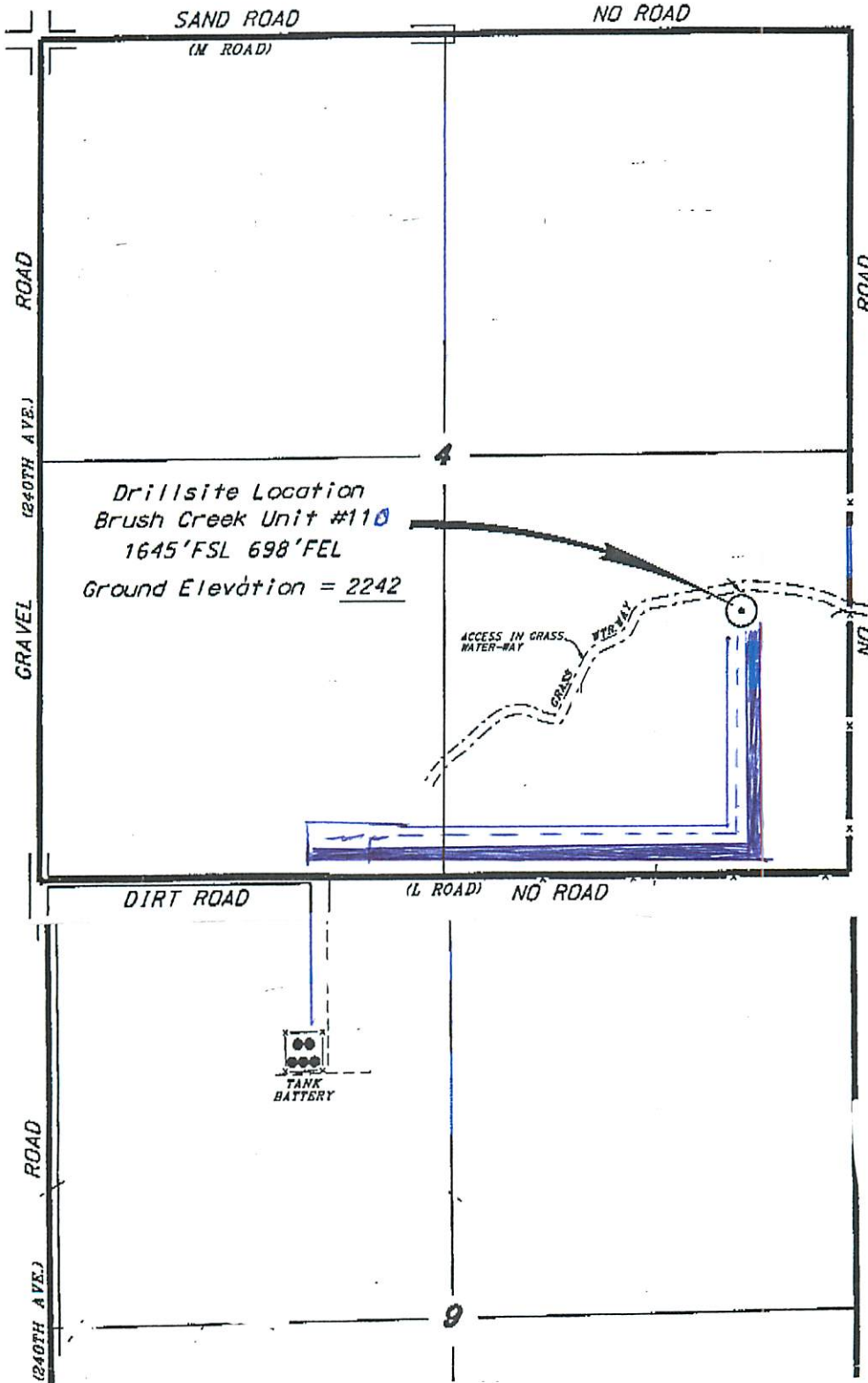


DARRAH OIL COMPANY, LLC  
BRUSH CREEK LEASE  
SE. 1/4, SECTION 4, T9S, R23W  
GRAHAM COUNTY, KANSAS



Drillsite Location  
Brush Creek Unit #110  
1645'FSL 698'FEL  
Ground Elevation = 2242

TANK  
BATTERY

SCALE 1" = 1000'