

MPC Natural Gas • Crude Oil
Exploration & Production
McCOY PETROLEUM CORPORATION
Wichita, Kansas

Scale 1:240 (5"=100') Imperial
Measured Depth Log

Well Name: Gamble 'A' #1-11
Location: Sec. 11 - T27S - R18W, Kiowa County, KS
License Number: API #: 15-097-21758
Spud Date: May 25, 2013
Surface Coordinates: C NE NW
660' FNL & 1980' FWL
Bottom Hole Coordinates:
Ground Elevation (ft): 2177' K.B. Elevation (ft): 2188'
Logged Interval (ft): 3800' To: 4830' Total Depth (ft): 4830' RTD 4832' LTD
Formation: Mississippian
Type of Drilling Fluid: Chemical
Region: Greensburg North
Drilling Completed: May 31, 2013

Printed by MUD.LOG from WellSight Systems 1-800-447-1534 www.WellSight.com

OPERATOR

Company: McCoy Petroleum Corporation, License #5003
Address: 8080 E. Central Ave., Suite 300
Wichita, KS 67206

GEOLOGIST

Name: Evan Stone
Company: McCoy Petroleum Corporation
Address: 8080 E. Central Ave., Suite 300
Wichita, KS 67206

REMARKS

Spud at 6:30 pm on 05/25/13. Drilled 12-1/4" hole to 458'. Ran 11 joints of new 24# 8-5/8" casing. Tallied 439.61', set at 453' KB. Cemented with 150 sks A-Con; 3% CC; 1/4# CF, tailed with 150sks 60/40 POZ; 2% Gel; 3% CC; 1/4 # CF, Plug down at 3.00 am on 05/26/13. Cement did circulate. Basic Energy Svcs ticket #8463. Texas Shoe. Welded straps on bottom 3 joints. Tacked all collars and strapped top 2 joints. Basket at 120'.



TRILOBITE TESTING, INC.

DRILL STEM TEST REPORT

McCoy Petroleum Corporation

11-27S-18W Kiowa

8080 E Central Ste 300
Wichita, KS 67206

Gamble 1-11

Job Ticket: 50979

DST#: 1

ATTN: Evan Stone

Test Start: 2013.05.30 @ 06:00:13

GENERAL INFORMATION:

Formation: **Mississippi**

Deviated: No Whipstock: ft (KB)

Time Tool Opened: 08:32:43

Time Test Ended: 15:22:13

Test Type: Conventional Bottom Hole (Initial)

Tester: Leal Cason

Unit No: 45

Interval: 4715.00 ft (KB) To 4737.00 ft (KB) (TVD)

Reference Elevations: 2188.00 ft (KB)

Total Depth: 4737.00 ft (KB) (TVD)

2177.00 ft (CF)

Hole Diameter: 7.88 inches Hole Condition: Good

KB to GR/CF: 11.00 ft

Serial #: 6798

Inside

Press@RunDepth: 41.68 psig @ 4716.00 ft (KB)

Capacity: 8000.00 psig

Start Date: 2013.05.30

End Date: 2013.05.30

Last Calib.: 2013.05.30

Start Time: 06:00:14

End Time: 15:22:13

Time On Btm: 2013.05.30 @ 08:30:43

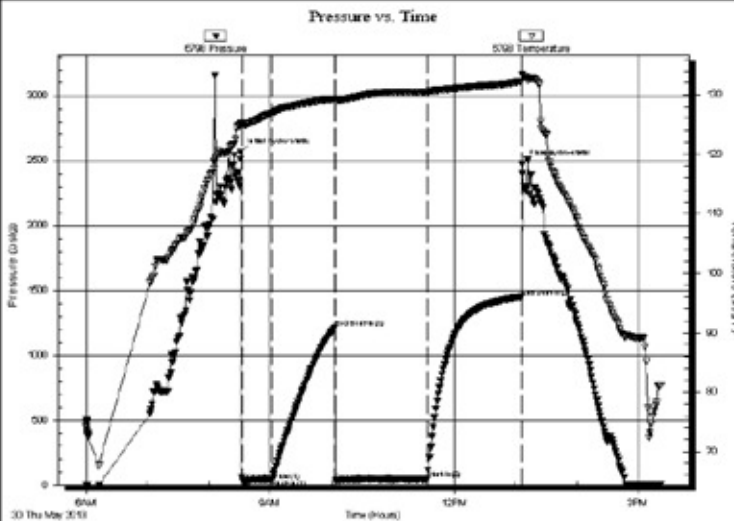
Time Off Btm: 2013.05.30 @ 13:06:43

TEST COMMENT: IF: Strong Blow, BOB in 45 seconds

IS: No Blow Back

FF: Strong Blow, BOB Immediate, GTS in 43 minutes, TSTM, Caught Sample

FS: No Blow Back



PRESSURE SUMMARY

Time (Min.)	Pressure (psig)	Temp (deg F)	Annotation
0	2560.40	124.97	Initial Hydro-static
2	28.68	125.11	Open To Flow (1)
32	42.98	126.98	Shut-In(1)
93	1210.56	129.33	End Shut-In(1)
94	23.53	128.97	Open To Flow (2)
183	41.68	130.55	Shut-In(2)
275	1448.31	132.22	End Shut-In(2)
276	2467.70	133.44	Final Hydro-static

Recovery

Length (ft)	Description	Volume (bbl)
0.00	GTS	0.00
70.00	GCM	0.34

Gas Rates

	Choke (inches)	Pressure (psig)	Gas Rate (Mct/d)

Serial #: 6798

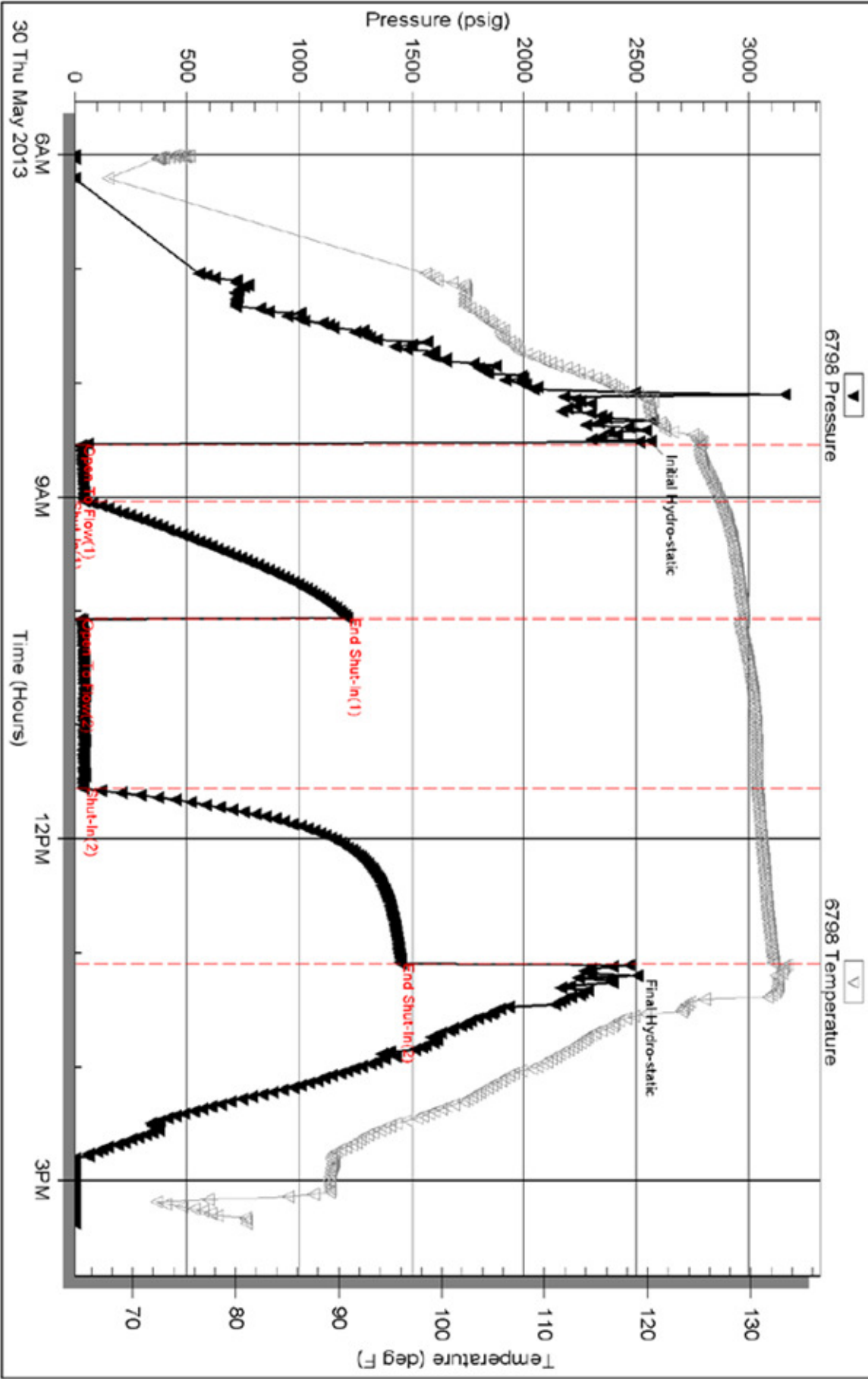
Inside

McCoy Petroleum Corporation

Gamble 1-11

DST Test Number: 1

Pressure vs. Time



LEGEND

LITHOLOGY

- Chert
- Dolomite
- Cherty dolo
- Gypsum
- Limestone
- Oolitic ls
- Cherty ls
- Sandy ls
- Shale/ls
- Salt

- Shale
- Carb shale
- Silty shale
- Sandy shale
- Siltstone
- Sandstone

MINERAL

- Calcite
- Chert
- Glauconite

- Pyrite
- Sand
- Silt

STRINGER

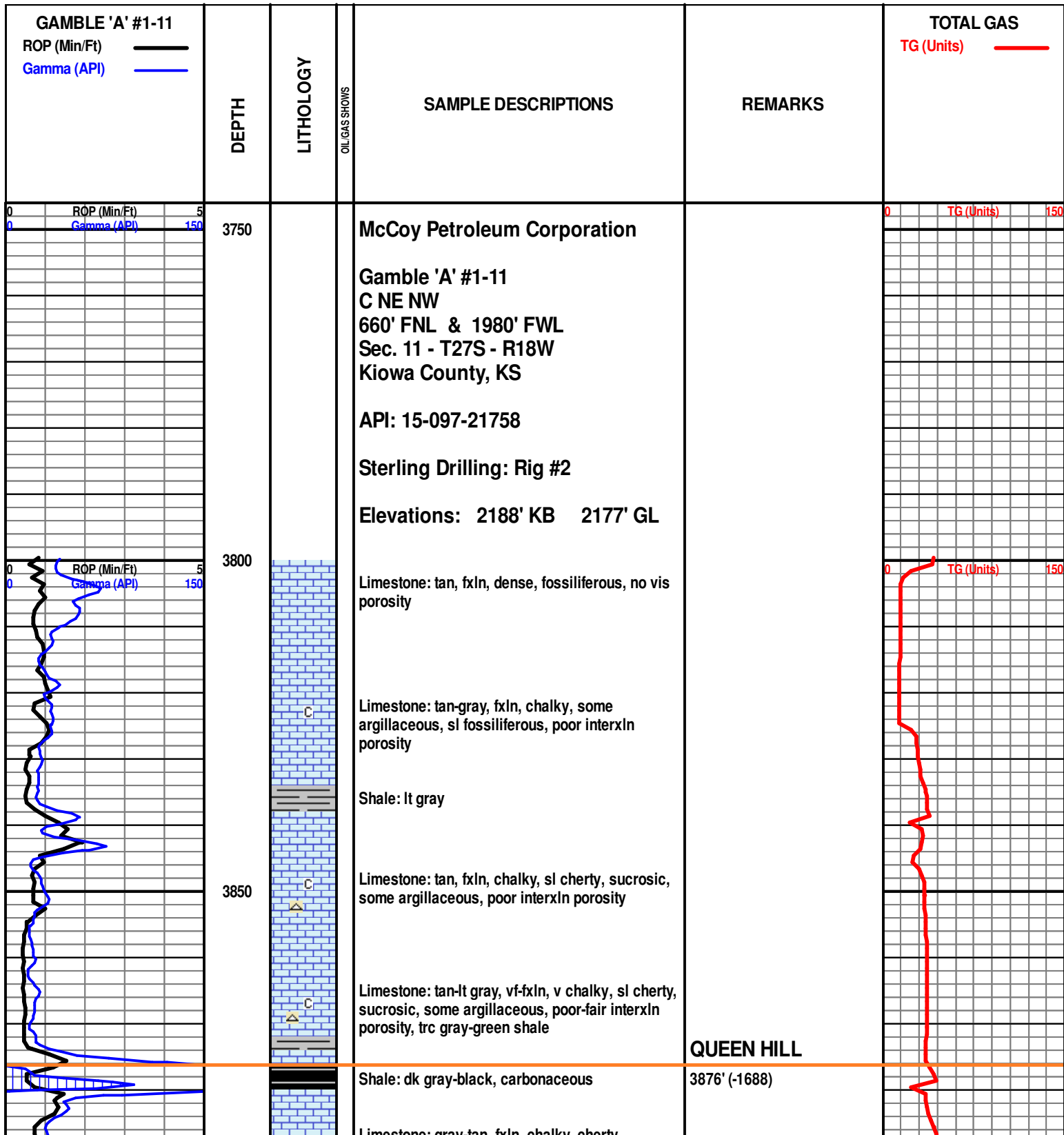
- Dolomite
- Gypsum
- Limestone
- Siltstone
- Sandstone

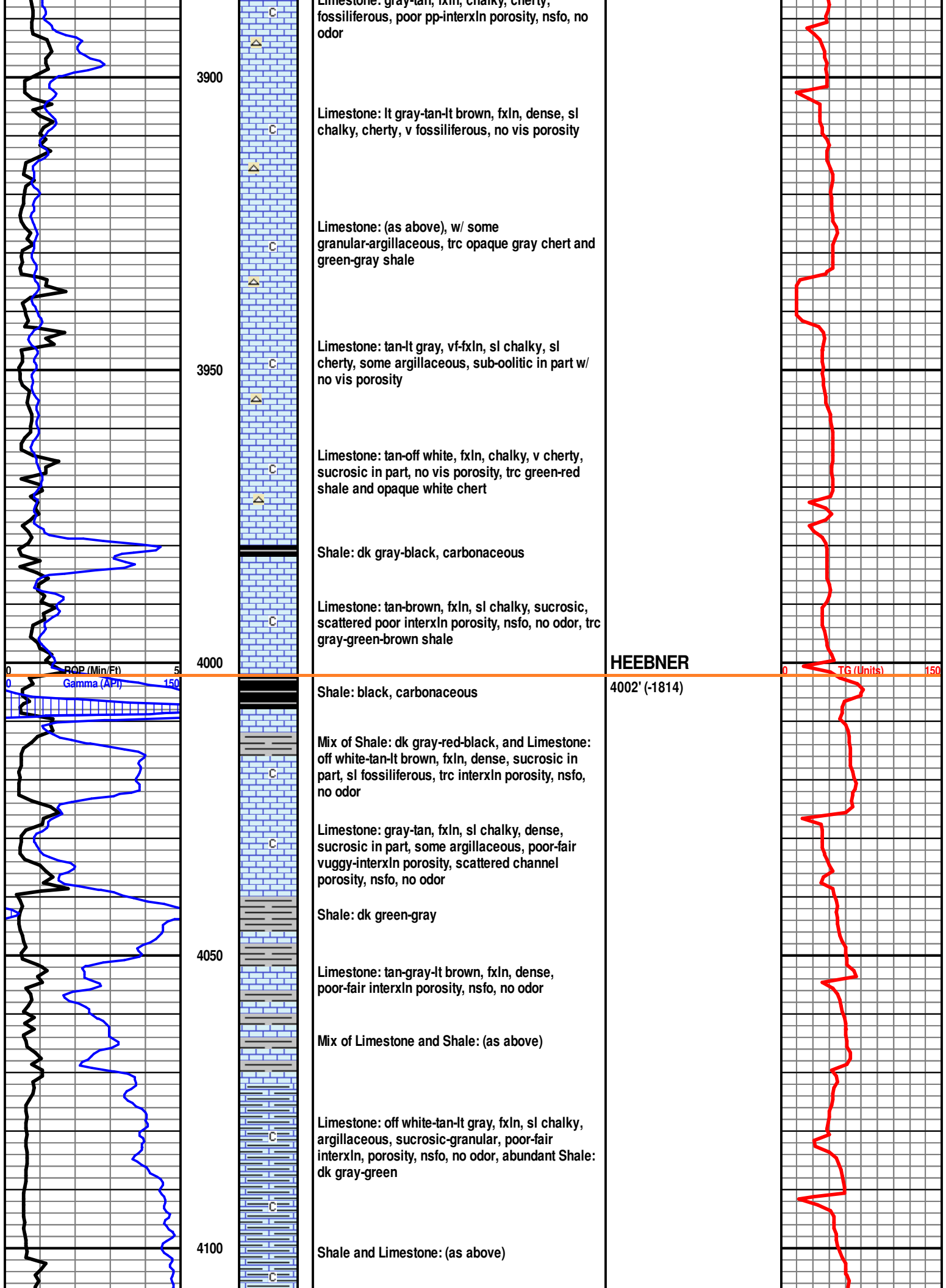
OIL/GAS SHOW

- Gas show
- Good
- Fair
- Poor
- Dead

INTERVAL

- Porosity





3900
3950
4000
4050
4100

ROP (Min/Ft) 5
Gamma (API) 150

TG (Units) 150

Limestone: gray-tan, fxln, chalky, cherty, fossiliferous, poor pp-interln porosity, nsfo, no odor

Limestone: lt gray-tan-lt brown, fxln, dense, sl chalky, cherty, v fossiliferous, no vis porosity

Limestone: (as above), w/ some granular-argillaceous, trc opaque gray chert and green-gray shale

Limestone: tan-lt gray, vf-fxln, sl chalky, sl cherty, some argillaceous, sub-oolitic in part w/ no vis porosity

Limestone: tan-off white, fxln, chalky, v cherty, sucrosic in part, no vis porosity, trc green-red shale and opaque white chert

Shale: dk gray-black, carbonaceous

Limestone: tan-brown, fxln, sl chalky, sucrosic, scattered poor interln porosity, nsfo, no odor, trc gray-green-brown shale

Shale: black, carbonaceous

Mix of Shale: dk gray-red-black, and Limestone: off white-tan-lt brown, fxln, dense, sucrosic in part, sl fossiliferous, trc interln porosity, nsfo, no odor

Limestone: gray-tan, fxln, sl chalky, dense, sucrosic in part, some argillaceous, poor-fair vuggy-interln porosity, scattered channel porosity, nsfo, no odor

Shale: dk green-gray

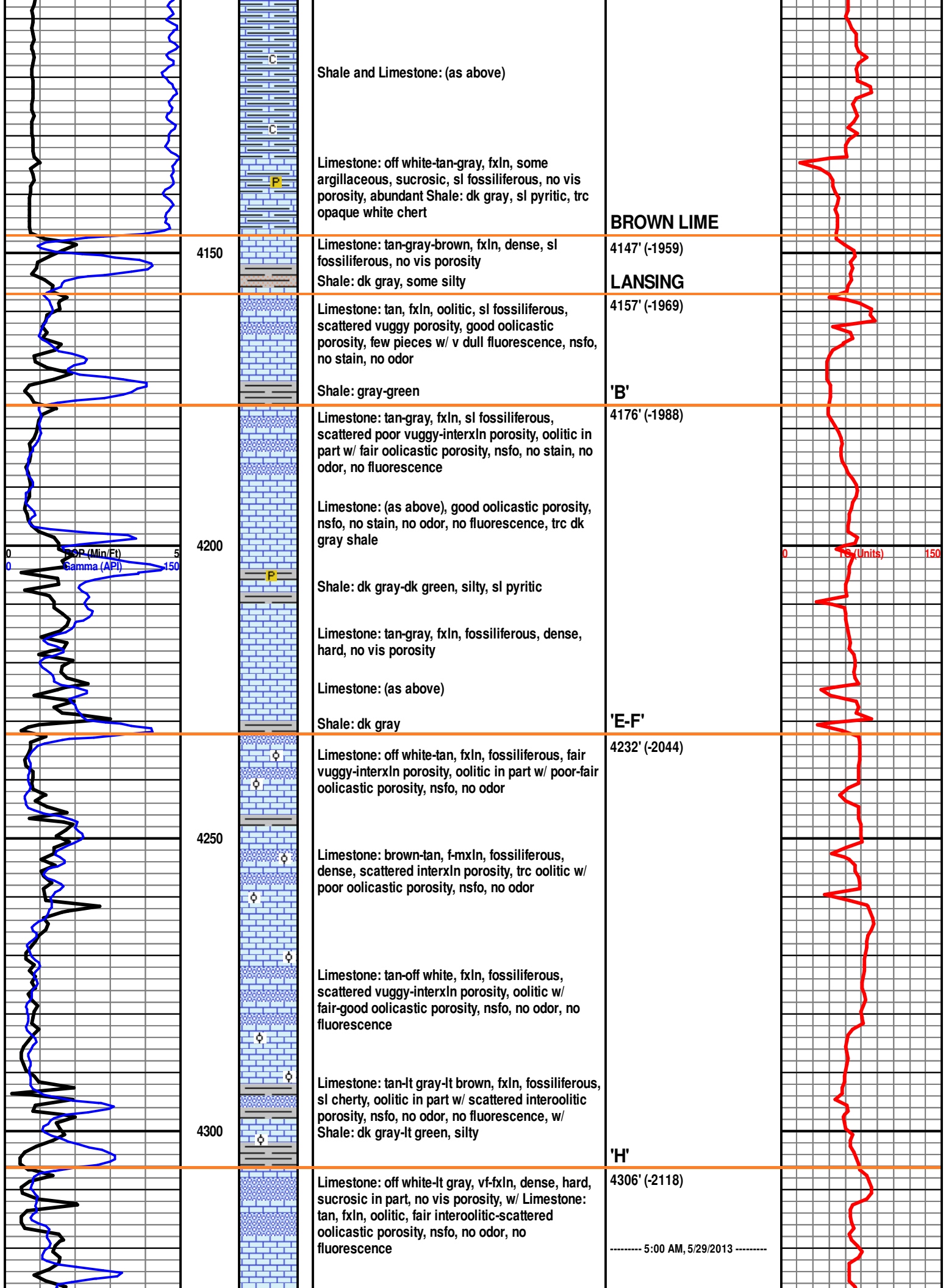
Limestone: tan-gray-lt brown, fxln, dense, poor-fair interln porosity, nsfo, no odor

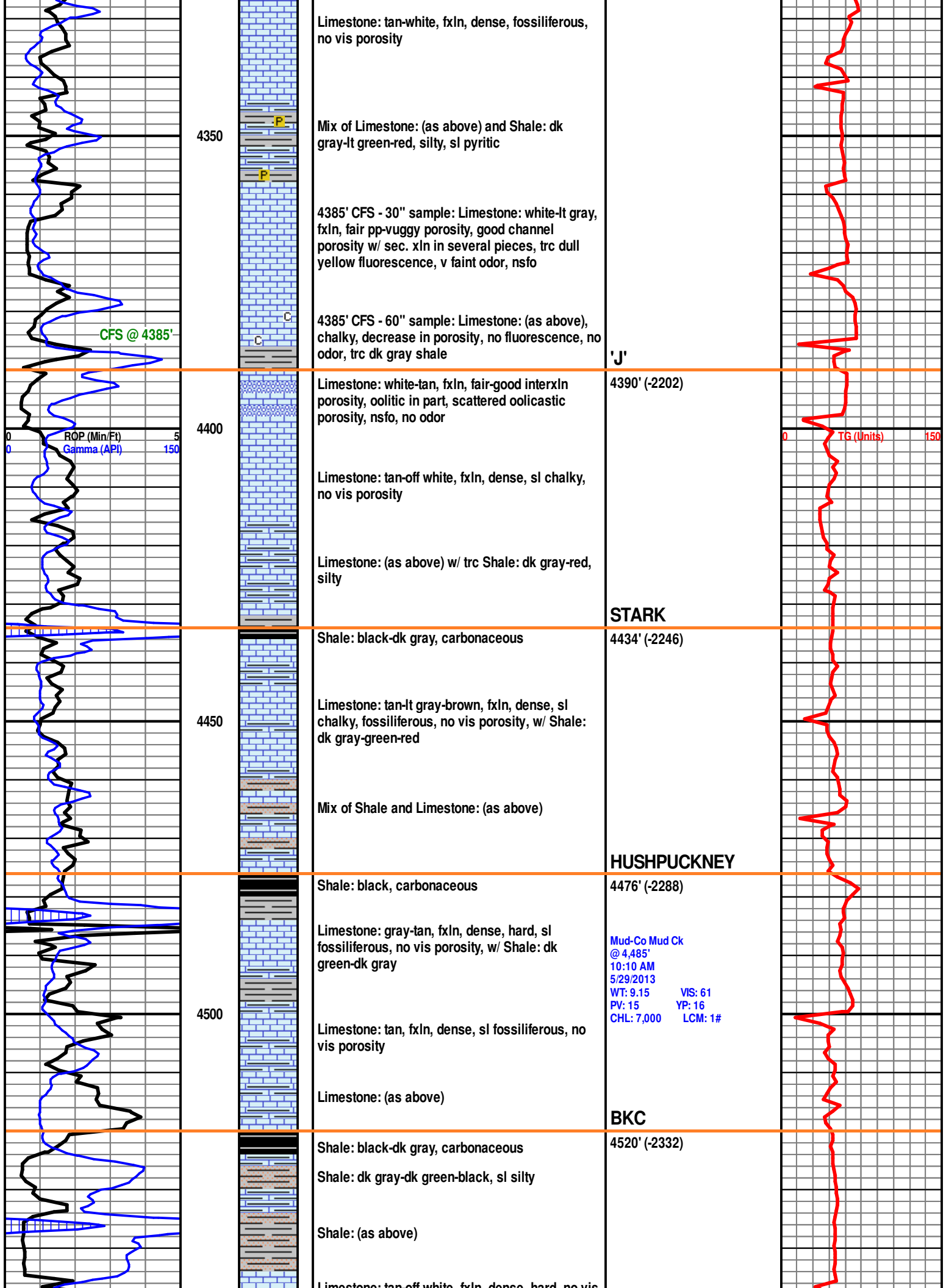
Mix of Limestone and Shale: (as above)

Limestone: off white-tan-lt gray, fxln, sl chalky, argillaceous, sucrosic-granular, poor-fair interln, porosity, nsfo, no odor, abundant Shale: dk gray-green

Shale and Limestone: (as above)

HEEBNER
4002' (-1814)





4350



Limestone: tan-white, fxln, dense, fossiliferous, no vis porosity

Mix of Limestone: (as above) and Shale: dk gray-lt green-red, silty, sl pyritic

4385' CFS - 30" sample: Limestone: white-lt gray, fxln, fair pp-vuggy porosity, good channel porosity w/ sec. xln in several pieces, trc dull yellow fluorescence, v faint odor, nsfo

4385' CFS - 60" sample: Limestone: (as above), chalky, decrease in porosity, no fluorescence, no odor, trc dk gray shale

CFS @ 4385'

'J'

4400



Limestone: white-tan, fxln, fair-good interxln porosity, oolitic in part, scattered oolitic porosity, nsfo, no odor

Limestone: tan-off white, fxln, dense, sl chalky, no vis porosity

Limestone: (as above) w/ trc Shale: dk gray-red, silty

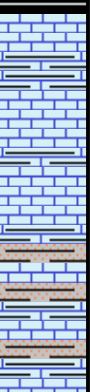
4390' (-2202)

TG (Units)

ROP (Min/Ft)
Gamma (API)

STARK

4450



Shale: black-dk gray, carbonaceous

Limestone: tan-lt gray-brown, fxln, dense, sl chalky, fossiliferous, no vis porosity, w/ Shale: dk gray-green-red

Mix of Shale and Limestone: (as above)

4434' (-2246)

HUSHPUCKNEY

4500



Shale: black, carbonaceous

Limestone: gray-tan, fxln, dense, hard, sl fossiliferous, no vis porosity, w/ Shale: dk green-dk gray

Limestone: tan, fxln, dense, sl fossiliferous, no vis porosity

Limestone: (as above)

4476' (-2288)

Mud-Co Mud Ck @ 4485'
10:10 AM
5/29/2013
WT: 9.15 VIS: 61
PV: 15 YP: 16
CHL: 7,000 LCM: 1#

BKC

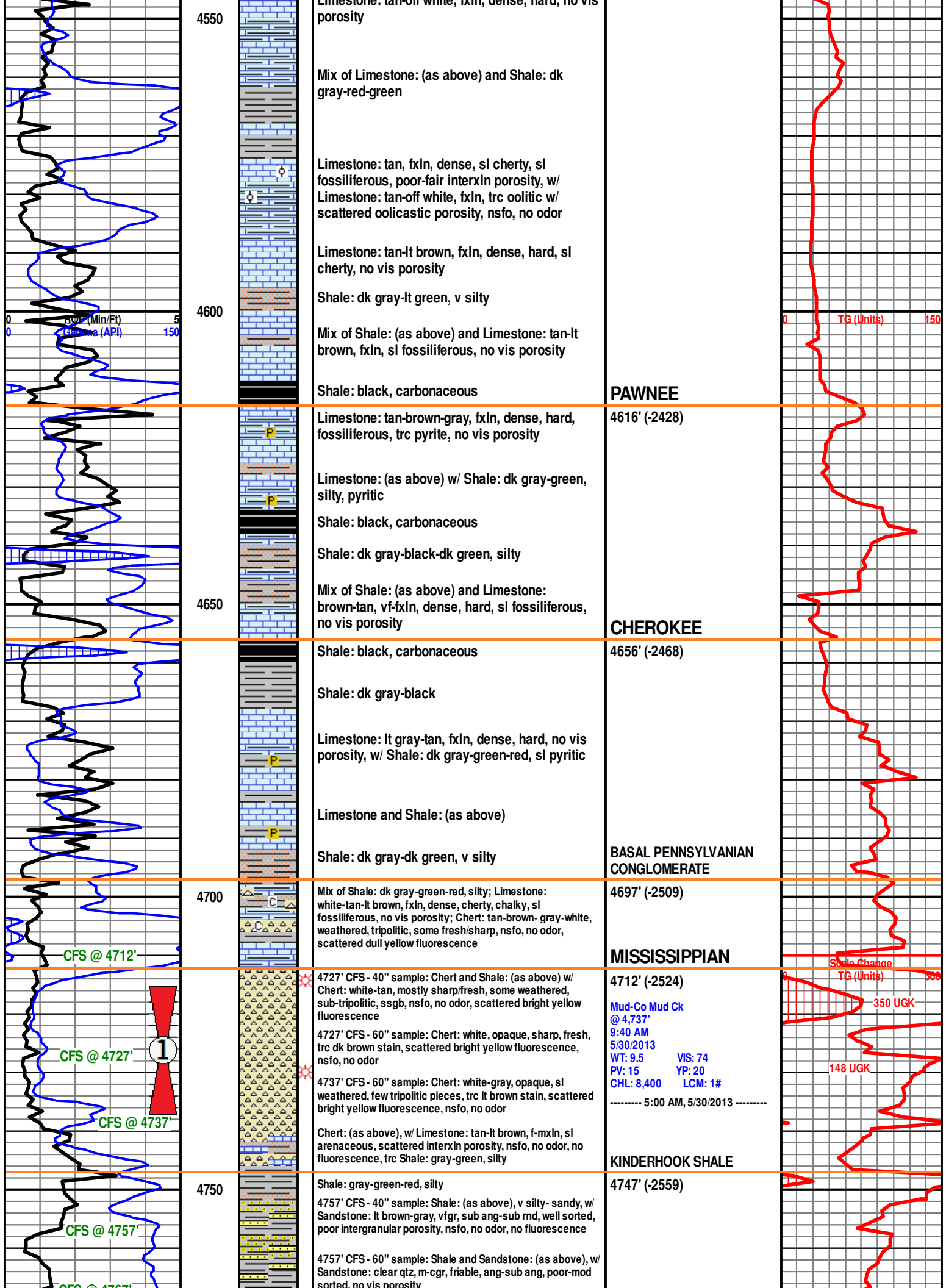
4520' (-2332)

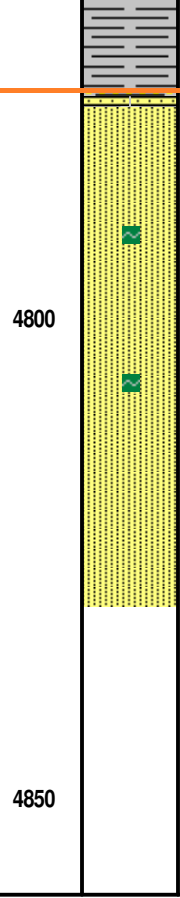
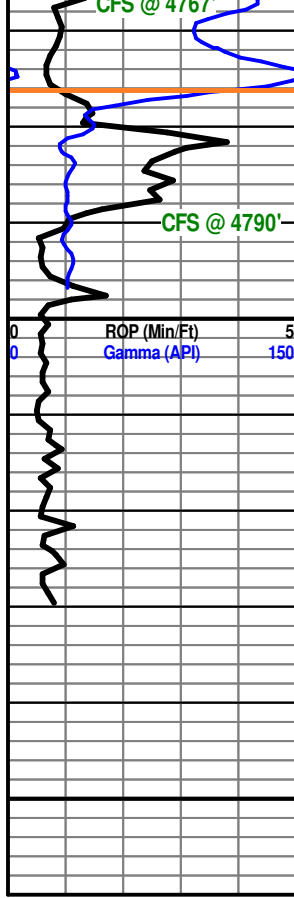
Shale: black-dk gray, carbonaceous

Shale: dk gray-dk green-black, sl silty

Shale: (as above)

Limestone: tan-off white, fxln, dense, hard, no vis





4767' CFS - 60" sample: Shale: red-green, v sandy, sl biotitic w/ trc Sandstone: gray-brown-clear qtz, fgr, sub-rnd, well sorted, no vis porosity

KINDERHOOK SAND

4776' (-2588)

DST #1
 4715' - 4737'
 30-60-90-90
 IF: 28-42# - BOB 45 sec
 FF: 23-41# - GTS 43 min, TSTM
 SIP: 1210-1448#
 Hydro: 2560-2467#
 BHT: 133°

Recovery:
 4639' GIP
 70' GCM

Mud-Co Mud Ck
 @ 4,830'
 10:00 AM
 5/31/2013
 WT: 9.4 VIS: 73
 PV: 12 YP: 16
 CHL: 7,800 LCM: 1#

Sandstone: red/brown-gray, vf-fgr, sl friable, shaly, sub-rnd, well-sorted, nsfo, no odor

Sandstone: red/brown-white, fgr, sub rnd, well sorted, friable, nsfo, no odor, trc glauconite

Sandstone: red-gray-v lt green, vf-fgr, sub rnd, well sorted, friable, sl shaly, nsfo, no odor, trc glauconite

Sandstone: gray-red/brown-white, fgr, sub ang-sub rnd, well sorted, friable, shaly, nsfo, no odor

RTD 4830' @ 1:00 AM on 5/31/2013

