



TRILOBITE TESTING, INC.

DRILL STEM TEST REPORT

Double D's LLC
133 E 12th
Hays, Kansas 67601
ATTN: Al Downing

23-15s-19w
Reichert #2
Job Ticket: 52222 **DST#: 4**
Test Start: 2013.04.16 @ 04:45:00

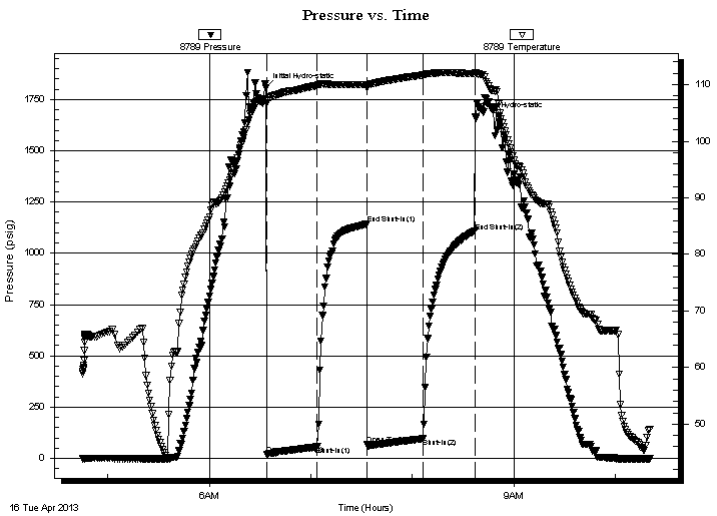
GENERAL INFORMATION:

Formation: **Arbucle**
Deviated: No Whipstock: 0.00 ft (KB)
Time Tool Opened: 06:33:45
Time Test Ended: 10:20:30
Test Type: Conventional Straddle (Initial)
Tester: Jason McLemore
Unit No: 54
Interval: **3578.00 ft (KB) To 3605.00 ft (KB) (TVD)**
Reference Elevations: 1987.00 ft (KB)
Total Depth: 3678.00 ft (KB) (TVD) 1981.00 ft (CF)
Hole Diameter: 7.80 inches Hole Condition: Fair KB to GR/CF: 6.00 ft

Serial #: 8789 Inside
Press @ Run Depth: 95.64 psig @ 3581.00 ft (KB) Capacity: 8000.00 psig
Start Date: 2013.04.16 End Date: 2013.04.16 Last Calib.: 2013.04.16
Start Time: 04:45:02 End Time: 10:20:30 Time On Btm: 2013.04.16 @ 06:33:15
Time Off Btm: 2013.04.16 @ 08:37:15

TEST COMMENT: IFP- Fair blow . 7" @ 30 minutes.
IS- Dead.
FFP- Fair blow . 4" @ 30 minutes.
FS- Dead

PRESSURE SUMMARY



Time (Min.)	Pressure (psig)	Temp (deg F)	Annotation
0	1805.69	107.35	Initial Hydro-static
1	20.70	106.59	Open To Flow (1)
31	57.33	109.85	Shut-In(1)
60	1142.11	110.00	End Shut-In(1)
60	67.25	109.36	Open To Flow (2)
93	95.64	111.67	Shut-In(2)
124	1106.55	111.90	End Shut-In(2)
124	1667.27	112.15	Final Hydro-static

Recovery

Length (ft)	Description	Volume (bbl)
15.00	Free Oil 100% oil	0.21
100.00	VSOCM 5% oil / 95% m	1.40
60.00	Muddy w ater. 1% oil / 89% w / 10% m	0.84

Gas Rates

	Choke (inches)	Pressure (psig)	Gas Rate (Mcf/d)



TRILOBITE
TESTING, INC.

DRILL STEM TEST REPORT

Double D's LLC
133 E 12th
Hays, Kansas 67601
ATTN: Al Downing

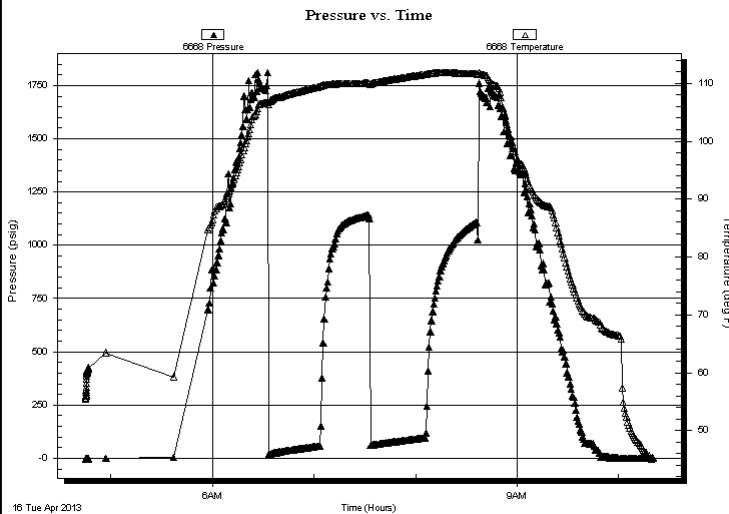
23-15s-19w
Reichert #2
Job Ticket: 52222 **DST#: 4**
Test Start: 2013.04.16 @ 04:45:00

GENERAL INFORMATION:

Formation: **Arbucle**
Deviated: No Whipstock: 0.00 ft (KB)
Time Tool Opened: 06:33:45
Time Test Ended: 10:20:30
Interval: **3578.00 ft (KB) To 3605.00 ft (KB) (TVD)**
Total Depth: 3678.00 ft (KB) (TVD)
Hole Diameter: 7.80 inches Hole Condition: Fair
Test Type: Conventional Straddle (Initial)
Tester: Jason McLemore
Unit No: 54
Reference Elevations: 1987.00 ft (KB)
1981.00 ft (CF)
KB to GR/CF: 6.00 ft

Serial #: 6668 Below (Straddle)
Press @ Run Depth: psig @ 3611.00 ft (KB)
Start Date: 2013.04.16 End Date: 2013.04.16 Capacity: 8000.00 psig
Start Time: 04:45:01 End Time: 10:20:20 Last Calib.: 2013.04.16
Time On Btm:
Time Off Btm:

TEST COMMENT: IFP- Fair blow . 7" @ 30 minutes.
ISI- Dead.
FFP- Fair blow . 4" @ 30 minutes.
FSI- Dead



PRESSURE SUMMARY

Time (Min.)	Pressure (psig)	Temp (deg F)	Annotation

Recovery

Length (ft)	Description	Volume (bbl)
15.00	Free Oil 100% oil	0.21
100.00	VSOCM 5% oil / 95% m	1.40
60.00	Muddy w ater. 1% oil / 89% w / 10% m	0.84

Gas Rates

	Choke (inches)	Pressure (psig)	Gas Rate (Mcf/d)



**TRILOBITE
TESTING, INC.**

DRILL STEM TEST REPORT

FLUID SUMMARY

Double D's LLC

23-15s-19w

133 E 12th
Hays, Kansas 67601

Reichert #2

Job Ticket: 52222

DST#: 4

ATTN: Al Downing

Test Start: 2013.04.16 @ 04:45:00

Mud and Cushion Information

Mud Type: Gel Chem

Cushion Type:

Oil API:

25 deg API

Mud Weight: 9.00 lb/gal

Cushion Length:

ft

Water Salinity:

24000 ppm

Viscosity: 58.00 sec/qt

Cushion Volume:

bbbl

Water Loss: 7.20 in³

Gas Cushion Type:

Resistivity: 0.37 ohm.m

Gas Cushion Pressure:

psig

Salinity: 3500.00 ppm

Filter Cake: inches

Recovery Information

Recovery Table

Length ft	Description	Volume bbbl
15.00	Free Oil 100% oil	0.210
100.00	VSOCM 5% oil / 95% m	1.403
60.00	Muddy water. 1% oil / 89% w / 10% m	0.842

Total Length: 175.00 ft

Total Volume: 2.455 bbl

Num Fluid Samples: 0

Num Gas Bombs: 0

Serial #:

Laboratory Name:

Laboratory Location:

Recovery Comments:

