



**TRILOBITE TESTING, INC.**

# DRILL STEM TEST REPORT

Forestar Petroleum

**10-17s-29w Lane Ks**

1801 Broadway #900  
Denver, Co 80202

**Snyder G 1-10**

Job Ticket: 51356

**DST#: 3**

ATTN: Mac Armstrong/ Harle

Test Start: 2013.04.15 @ 04:26:34

## GENERAL INFORMATION:

Formation: **Lansing KLM**

Deviated: No Whipstock: ft (KB)

Time Tool Opened: 06:28:04

Time Test Ended: 11:57:04

Test Type: Conventional Bottom Hole (Reset)

Tester: Brandon Turley

Unit No: 60

**Interval: 4216.00 ft (KB) To 4384.00 ft (KB) (TVD)**

Reference Elevations: 2809.00 ft (KB)

Total Depth: 4384.00 ft (KB) (TVD)

2804.00 ft (CF)

Hole Diameter: 7.88 inches Hole Condition: Good

KB to GR/CF: 5.00 ft

**Serial #: 8373**

**Inside**

Press @ Run Depth: 229.88 psig @ 4221.00 ft (KB)

Capacity: 8000.00 psig

Start Date: 2013.04.15

End Date:

2013.04.15

Last Calib.:

2013.04.15

Start Time:

04:26:39

End Time:

11:57:03

Time On Btm:

2013.04.15 @ 06:27:04

Time Off Btm:

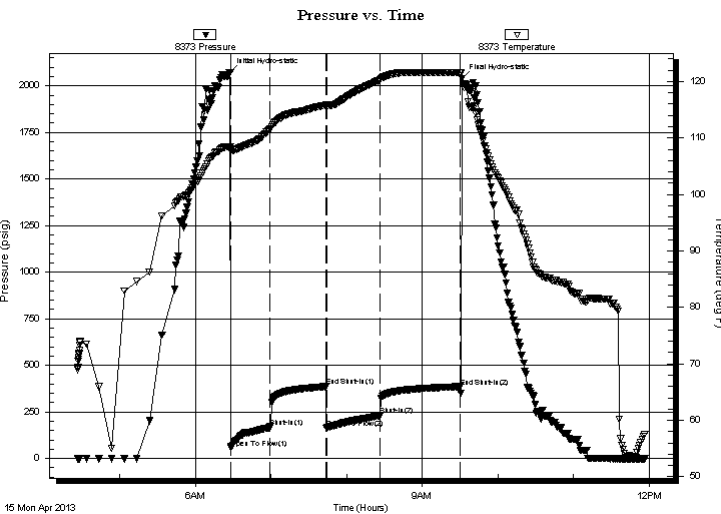
2013.04.15 @ 09:31:34

TEST COMMENT: IF: 1/4 blow BOB in 9 min.

IS: No return.

FF: Surface blow BOB in 22 min.

FS No return.



## PRESSURE SUMMARY

Time (Min.)	Pressure (psig)	Temp (deg F)	Annotation
0	2072.15	108.47	Initial Hydro-static
1	56.69	107.78	Open To Flow (1)
32	166.35	111.57	Shut-In(1)
77	385.60	115.82	End Shut-In(1)
77	163.48	115.70	Open To Flow (2)
120	229.88	120.31	Shut-In(2)
183	385.29	121.53	End Shut-In(2)
185	2038.42	120.49	Final Hydro-static

## Recovery

Length (ft)	Description	Volume (bbl)
124.00	mcw 90%w 10%m	0.61
63.00	mcw 70%w 30%m	0.88
189.00	ocw m 10%o 10%w 80%m	2.65
20.00	ocm 30%o 70%m	0.28
10.00	oil 100%o	0.14

\* Recovery from multiple tests

## Gas Rates

	Choke (inches)	Pressure (psig)	Gas Rate (Mcf/d)



**TRILOBITE  
TESTING, INC.**

# DRILL STEM TEST REPORT

**FLUID SUMMARY**

Forestar Petroleum

**10-17s-29w Lane Ks**

1801 Broadway #900  
Denver, Co 80202

**Snyder G 1-10**

Job Ticket: 51356

**DST#: 3**

ATTN: Mac Armstrong/ Harle

Test Start: 2013.04.15 @ 04:26:34

## Mud and Cushion Information

Mud Type: Gel Chem

Cushion Type:

Oil API:

0 deg API

Mud Weight: 9.00 lb/gal

Cushion Length:

ft

Water Salinity:

50000 ppm

Viscosity: 54.00 sec/qt

Cushion Volume:

bbbl

Water Loss: 5.20 in<sup>3</sup>

Gas Cushion Type:

Resistivity: 0.00 ohm.m

Gas Cushion Pressure:

psig

Salinity: 2500.00 ppm

Filter Cake: 1.00 inches

## Recovery Information

Recovery Table

Length ft	Description	Volume bbbl
124.00	mcw 90%w 10%m	0.610
63.00	mcw 70%w 30%m	0.884
189.00	ocw m 10%o 10%w 80%m	2.651
20.00	ocm 30%o 70%m	0.281
10.00	oil 100%o	0.140

Total Length: 406.00 ft      Total Volume: 4.566 bbl

Num Fluid Samples: 0

Num Gas Bombs: 0

Serial #:

Laboratory Name:

Laboratory Location:

Recovery Comments: .19@54=50000

Serial #: 8373

Inside

Forestar Petroleum

Snyder G-1-10

DST Test Number: 3

### Pressure vs. Time

