



**TRILOBITE
TESTING, INC.**

DRILL STEM TEST REPORT

Hess Oil Company
PO Box 1009
McPherson Ks 67460-1009
ATTN: Bryan Hess

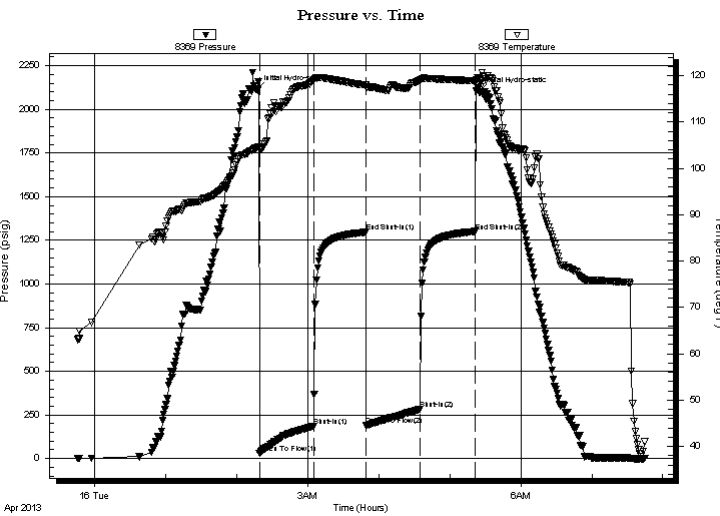
26-17s-23w Ness
Becky #1
Job Ticket: 52565 **DST#: 2**
Test Start: 2013.04.15 @ 23:45:53

GENERAL INFORMATION:

Formation: **Miss**
Deviated: No Whipstock: ft (KB)
Time Tool Opened: 02:19:18
Time Test Ended: 07:44:47
Interval: **4311.00 ft (KB) To 4395.00 ft (KB) (TVD)**
Total Depth: 4395.00 ft (KB) (TVD)
Hole Diameter: 7.85 inches Hole Condition: Fair
Test Type: Conventional Bottom Hole (Reset)
Tester: Ray Schwager
Unit No: 42
Reference Elevations: 2348.00 ft (KB)
2343.00 ft (CF)
KB to GR/CF: 5.00 ft

Serial #: 8369 **Inside**
Press @ Run Depth: 280.80 psig @ 4313.00 ft (KB) Capacity: 8000.00 psig
Start Date: 2013.04.15 End Date: 2013.04.16 Last Calib.: 2013.04.16
Start Time: 23:45:53 End Time: 07:44:47 Time On Btm: 2013.04.16 @ 02:16:48
Time Off Btm: 2013.04.16 @ 05:24:47

TEST COMMENT: 45-IFP-w k to strg in 40min
45-ISIP-no bl
45-FFP-w k to a fr bl , surface to 4"bl
45-FSIP-no bl



PRESSURE SUMMARY

Time (Min.)	Pressure (psig)	Temp (deg F)	Annotation
0	2111.02	104.38	Initial Hydro-static
3	29.93	103.94	Open To Flow (1)
49	186.24	119.04	Shut-In(1)
93	1296.92	117.96	End Shut-In(1)
93	191.05	117.60	Open To Flow (2)
138	280.80	118.95	Shut-In(2)
185	1300.86	118.91	End Shut-In(2)
188	2099.42	119.30	Final Hydro-static

Recovery

Length (ft)	Description	Volume (bbl)
200.00	MW 25%M75%W	0.98
380.00	Water	4.97

* Recovery from multiple tests

Gas Rates

Choke (inches)	Pressure (psig)	Gas Rate (Mcf/d)



**TRILOBITE
TESTING, INC.**

DRILL STEM TEST REPORT

FLUID SUMMARY

Hess Oil Company
PO Box 1009
McPherson Ks 67460-1009
ATTN: Bryan Hess

26-17s-23w Ness
Becky #1
Job Ticket: 52565 **DST#: 2**
Test Start: 2013.04.15 @ 23:45:53

Mud and Cushion Information

Mud Type: Gel Chem	Cushion Type:	Oil API:	deg API
Mud Weight: 9.00 lb/gal	Cushion Length: ft	Water Salinity:	32000 ppm
Viscosity: 48.00 sec/qt	Cushion Volume: bbl		
Water Loss: 8.77 in ³	Gas Cushion Type:		
Resistivity: ohm.m	Gas Cushion Pressure: psig		
Salinity: 5400.00 ppm			
Filter Cake: 1.00 inches			

Recovery Information

Recovery Table

Length ft	Description	Volume bbl
200.00	MW 25%M75%W	0.984
380.00	Water	4.966

Total Length: 580.00 ft Total Volume: 5.950 bbl
 Num Fluid Samples: 0 Num Gas Bombs: 0 Serial #:
 Laboratory Name: Laboratory Location:
 Recovery Comments: RW .27@55F

Pressure vs. Time

