



## DRILL STEM TEST REPORT

Prepared For: **Downing-Nelson Oil Co Inc**

PO Box 1019  
Hays KS 67601

ATTN: Ron Nelson

**32-9s-23w Graham,KS**

**Mitchell-Davignon #2-32**

Start Date: 2013.05.15 @ 12:45:59

End Date: 2013.05.15 @ 19:05:23

Job Ticket #: 52575                      DST #: 1

Trilobite Testing, Inc

PO Box 362 Hays, KS 67601

ph: 785-625-4778 fax: 785-625-5620

Printed: 2013.05.22 @ 09:40:39

Downing-Nelson Oil Co Inc

Mitchell-Davignon #2-32

32-9s-23w Graham,KS

DST # 1

LKC-C-D

2013.05.15



**TRILOBITE TESTING, INC.**

# DRILL STEM TEST REPORT

Dow ning-Nelson Oil Co Inc

**Mitchell-Davignon #2-32**

PO Box 1019  
Hays KS 67601

**32-9s-23w Graham,KS**

ATTN: Ron Nelson

Job Ticket: 52575

**DST#: 1**

Test Start: 2013.05.15 @ 12:45:59

## GENERAL INFORMATION:

Formation: **LKC C-D**

Deviated: No Whipstock: ft (KB)

Time Tool Opened: 14:05:54

Time Test Ended: 19:05:23

Test Type: Conventional Bottom Hole (Initial)

Tester: Ray Schwager

Unit No: 42

**Interval: 3805.00 ft (KB) To 3856.00 ft (KB) (TVD)**

Reference Elevations: 2469.00 ft (KB)

Total Depth: 3856.00 ft (KB) (TVD)

2461.00 ft (CF)

Hole Diameter: 7.88 inches Hole Condition: Fair

KB to GR/CF: 8.00 ft

**Serial #: 8369**

**Inside**

Press @ Run Depth: 488.52 psig @ 3821.00 ft (KB)

Capacity: 8000.00 psig

Start Date: 2013.05.15

End Date:

2013.05.15

Last Calib.:

2013.05.15

Start Time: 12:45:59

End Time:

19:05:23

Time On Btm:

2013.05.15 @ 14:03:39

Time Off Btm:

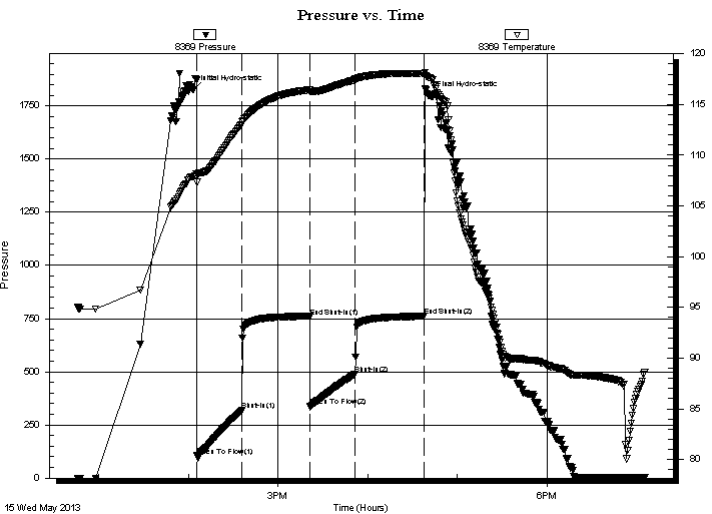
2013.05.15 @ 16:41:39

**TEST COMMENT:** 30-IFP-w k to strg in 8 min

45-ISIP-no bl

30-FFP-w k to a gd bl 1/4" to 8" bl

45-FSIP-no bl



## PRESSURE SUMMARY

Time (Min.)	Pressure (psig)	Temp (deg F)	Annotation
0	1826.64	107.86	Initial Hydro-static
3	105.01	107.32	Open To Flow (1)
32	317.26	113.04	Shut-In(1)
78	759.31	116.43	End Shut-In(1)
78	336.75	116.29	Open To Flow (2)
108	488.52	117.44	Shut-In(2)
154	761.77	118.03	End Shut-In(2)
158	1797.14	117.60	Final Hydro-static

## Recovery

Length (ft)	Description	Volume (bbl)
600.00	Water	8.14
120.00	SO&GCMW 5%G3%O20%M72%W	1.68
230.00	O&GCMW 10%G10%O35%M45%W	3.23
25.00	CO	0.35
0.00	300'GIP	0.00

## Gas Rates

Choke (inches)	Pressure (psig)	Gas Rate (Mcf/d)





**TRILOBITE  
TESTING, INC.**

# DRILL STEM TEST REPORT

**TOOL DIAGRAM**

Dow ning-Nelson Oil Co Inc

**Mitchell-Davignon #2-32**

PO Box 1019  
Hays KS 67601

**32-9s-23w Graham,KS**

ATTN: Ron Nelson

Job Ticket: 52575

**DST#: 1**

Test Start: 2013.05.15 @ 12:45:59

## Tool Information

Drill Pipe:	Length: 3764.00 ft	Diameter: 3.80 inches	Volume: 52.80 bbl	Tool Weight:	2200.00 lb
Heavy Wt. Pipe:	Length: 0.00 ft	Diameter: 0.00 inches	Volume: 0.00 bbl	Weight set on Packer:	25000.00 lb
Drill Collar:	Length: 30.00 ft	Diameter: 2.25 inches	Volume: 0.15 bbl	Weight to Pull Loose:	65000.00 lb
			<u>Total Volume: 52.95 bbl</u>	Tool Chased	10.00 ft
Drill Pipe Above KB:	10.00 ft			String Weight: Initial	44000.00 lb
Depth to Top Packer:	3805.00 ft			Final	50000.00 lb
Depth to Bottom Packer:	ft				
Interval between Packers:	51.00 ft				
Tool Length:	72.00 ft				
Number of Packers:	2	Diameter: 6.75 inches			

Tool Comments: slid tool 10'to bottom

Tool Description	Length (ft)	Serial No.	Position	Depth (ft)	Accum. Lengths
------------------	-------------	------------	----------	------------	----------------

Change Over Sub	1.00			3785.00	
Shut In Tool	5.00			3790.00	
Hydraulic tool	5.00			3795.00	
Packer	5.00			3800.00	21.00 Bottom Of Top Packer
Packer	5.00			3805.00	
Stubb	1.00			3806.00	
Perforations	15.00			3821.00	
Recorder	0.00	8369	Inside	3821.00	
Recorder	0.00	8700	Outside	3821.00	
Blank Spacing	32.00			3853.00	
Bullnose	3.00			3856.00	51.00 Bottom Packers & Anchor

**Total Tool Length: 72.00**



**TRILOBITE  
TESTING, INC.**

# DRILL STEM TEST REPORT

**FLUID SUMMARY**

Downing-Nelson Oil Co Inc

**Mitchell-Davignon #2-32**

PO Box 1019  
Hays KS 67601

**32-9s-23w Graham,KS**

Job Ticket: 52575

**DST#: 1**

ATTN: Ron Nelson

Test Start: 2013.05.15 @ 12:45:59

## Mud and Cushion Information

Mud Type: Gel Chem

Cushion Type:

Oil API:

40 deg API

Mud Weight: 9.00 lb/gal

Cushion Length:

ft

Water Salinity:

101000 ppm

Viscosity: 70.00 sec/qt

Cushion Volume:

bbbl

Water Loss: 7.55 in<sup>3</sup>

Gas Cushion Type:

Resistivity: ohm.m

Gas Cushion Pressure:

psig

Salinity: 800.00 ppm

Filter Cake: 1.00 inches

## Recovery Information

Recovery Table

Length ft	Description	Volume bbbl
600.00	Water	8.143
120.00	SO&GCMW 5%G3%O20%M72%W	1.683
230.00	O&GCMW 10%G10%O35%M45%W	3.226
25.00	CO	0.351
0.00	300'GIP	0.000

Total Length: 975.00 ft      Total Volume: 13.403 bbl

Num Fluid Samples: 0

Num Gas Bombs: 0

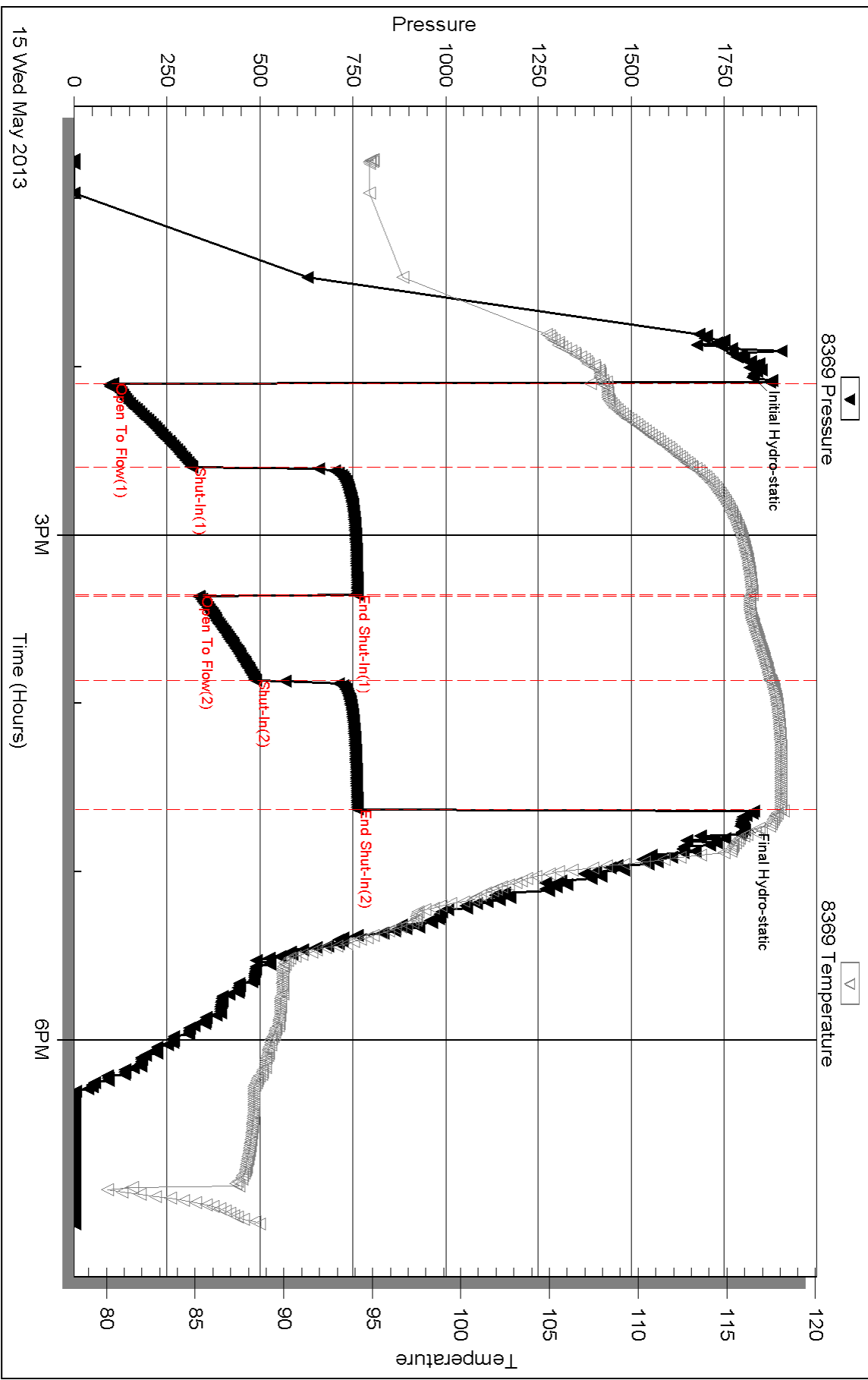
Serial #:

Laboratory Name:

Laboratory Location:

Recovery Comments: RW .07@75F

### Pressure vs. Time

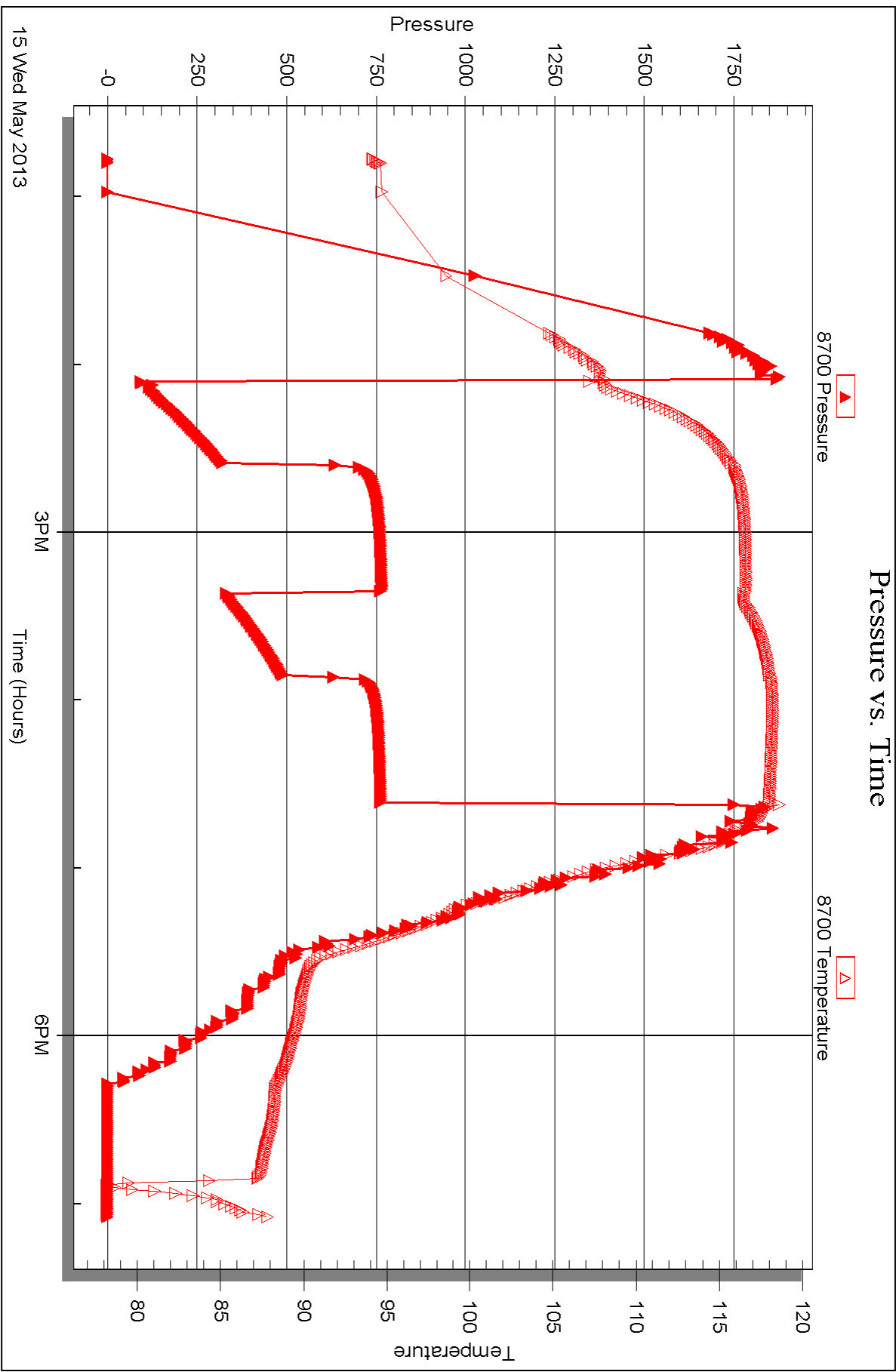


Serial #: 8700

Outside Dow nging-Nelson Oil Co Inc

32-95-23w Graham,KS

DST Test Number: 1





## DRILL STEM TEST REPORT

Prepared For: **Downing-Nelson Oil Co Inc**

PO Box 1019  
Hays KS 67601

ATTN: Ron Nelson

**32-9s-23w Graham,KS**

**Mitchell-Davignon #2-32**

Start Date: 2013.05.16 @ 02:20:51

End Date: 2013.05.16 @ 07:38:15

Job Ticket #: 52076                      DST #: 2

Trilobite Testing, Inc

PO Box 362 Hays, KS 67601

ph: 785-625-4778 fax: 785-625-5620

Printed: 2013.05.22 @ 09:39:40





**TRILOBITE TESTING, INC.**

# DRILL STEM TEST REPORT

Dow ning-Nelson Oil Co Inc

**Mitchell-Davignon #2-32**

PO Box 1019  
Hays KS 67601

**32-9s-23w Graham,KS**

ATTN: Ron Nelson

Job Ticket: 52076

**DST#: 2**

Test Start: 2013.05.16 @ 02:20:51

## GENERAL INFORMATION:

Formation: **LKC E-F**

Deviated: No Whipstock: ft (KB)

Time Tool Opened: 04:06:46

Time Test Ended: 07:38:15

Test Type: Conventional Bottom Hole (Reset)

Tester: Ray Schwager

Unit No: 42

**Interval: 3850.00 ft (KB) To 3880.00 ft (KB) (TVD)**

Reference Elevations: 2469.00 ft (KB)

Total Depth: 3880.00 ft (KB) (TVD)

2461.00 ft (CF)

Hole Diameter: 7.88 inches Hole Condition: Fair

KB to GR/CF: 8.00 ft

**Serial #: 8369**

**Inside**

Press @ RunDepth: 360.31 psig @ 3857.00 ft (KB)

Capacity: 8000.00 psig

Start Date: 2013.05.16

End Date:

2013.05.16

Last Calib.:

2013.05.16

Start Time: 02:20:51

End Time:

07:38:15

Time On Btm:

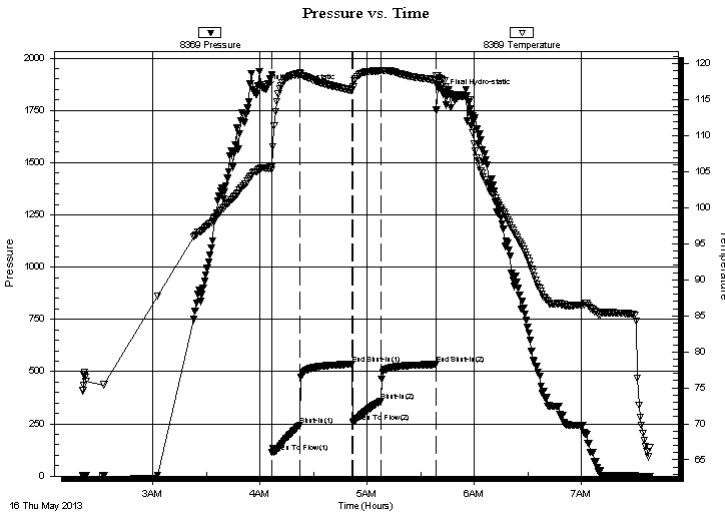
2013.05.16 @ 04:03:46

Time Off Btm:

2013.05.16 @ 05:42:31

**TEST COMMENT:** 15-IFP-w k to strg in 2 min  
30-ISIP-no bl  
15-FFP-w k to strg in 4 min  
30-FSIP-no bl

## PRESSURE SUMMARY



Time (Min.)	Pressure (psig)	Temp (deg F)	Annotation
0	1851.98	105.51	Initial Hydro-static
3	115.00	105.30	Open To Flow (1)
19	244.73	118.72	Shut-In(1)
48	535.87	116.30	End Shut-In(1)
49	259.37	116.79	Open To Flow (2)
64	360.31	119.04	Shut-In(2)
95	534.91	117.68	End Shut-In(2)
99	1828.60	117.70	Final Hydro-static

## Recovery

Length (ft)	Description	Volume (bbl)
630.00	Water	8.56
60.00	MW 25%M75%W w/show of oil	0.84
0.00	60'GIP	0.00

\* Recovery from multiple tests

## Gas Rates

Choke (inches)	Pressure (psig)	Gas Rate (Mcf/d)





**TRILOBITE  
TESTING, INC.**

# DRILL STEM TEST REPORT

**TOOL DIAGRAM**

Dow ning-Nelson Oil Co Inc

**Mitchell-Davignon #2-32**

PO Box 1019  
Hays KS 67601

**32-9s-23w Graham,KS**

ATTN: Ron Nelson

Job Ticket: 52076

**DST#: 2**

Test Start: 2013.05.16 @ 02:20:51

## Tool Information

Drill Pipe:	Length: 3820.00 ft	Diameter: 3.80 inches	Volume: 53.58 bbl	Tool Weight:	2200.00 lb
Heavy Wt. Pipe:	Length: 0.00 ft	Diameter: 0.00 inches	Volume: 0.00 bbl	Weight set on Packer:	25000.00 lb
Drill Collar:	Length: 30.00 ft	Diameter: 2.25 inches	Volume: 0.15 bbl	Weight to Pull Loose:	60000.00 lb
			<u>Total Volume: 53.73 bbl</u>	Tool Chased	0.00 ft
Drill Pipe Above KB:	21.00 ft			String Weight: Initial	44000.00 lb
Depth to Top Packer:	3850.00 ft			Final	48000.00 lb
Depth to Bottom Packer:	ft				
Interval between Packers:	30.00 ft				
Tool Length:	51.00 ft				
Number of Packers:	2	Diameter:	6.75 inches		
Tool Comments:					

Tool Description	Length (ft)	Serial No.	Position	Depth (ft)	Accum. Lengths
------------------	-------------	------------	----------	------------	----------------

Change Over Sub	1.00			3830.00	
Shut In Tool	5.00			3835.00	
Hydraulic tool	5.00			3840.00	
Packer	5.00			3845.00	21.00 Bottom Of Top Packer
Packer	5.00			3850.00	
Stubb	1.00			3851.00	
Perforations	6.00			3857.00	
Recorder	0.00	8369	Inside	3857.00	
Recorder	0.00	8700	Outside	3857.00	
Perforations	20.00			3877.00	
Bullnose	3.00			3880.00	30.00 Bottom Packers & Anchor

**Total Tool Length: 51.00**



**TRILOBITE  
TESTING, INC.**

# DRILL STEM TEST REPORT

**FLUID SUMMARY**

Dow ning-Nelson Oil Co Inc

**Mitchell-Davignon #2-32**

PO Box 1019  
Hays KS 67601

**32-9s-23w Graham,KS**

Job Ticket: 52076

**DST#: 2**

ATTN: Ron Nelson

Test Start: 2013.05.16 @ 02:20:51

## Mud and Cushion Information

Mud Type: Gel Chem

Cushion Type:

Oil API:

deg API

Mud Weight: 9.00 lb/gal

Cushion Length:

ft

Water Salinity:

74000 ppm

Viscosity: 70.00 sec/qt

Cushion Volume:

bbbl

Water Loss: 7.55 in<sup>3</sup>

Gas Cushion Type:

Resistivity: ohm.m

Gas Cushion Pressure:

psig

Salinity: 800.00 ppm

Filter Cake: 1.00 inches

## Recovery Information

Recovery Table

Length ft	Description	Volume bbbl
630.00	Water	8.564
60.00	MW 25%M75%W w/show of oil	0.842
0.00	60'GIP	0.000

Total Length: 690.00 ft      Total Volume: 9.406 bbl

Num Fluid Samples: 0

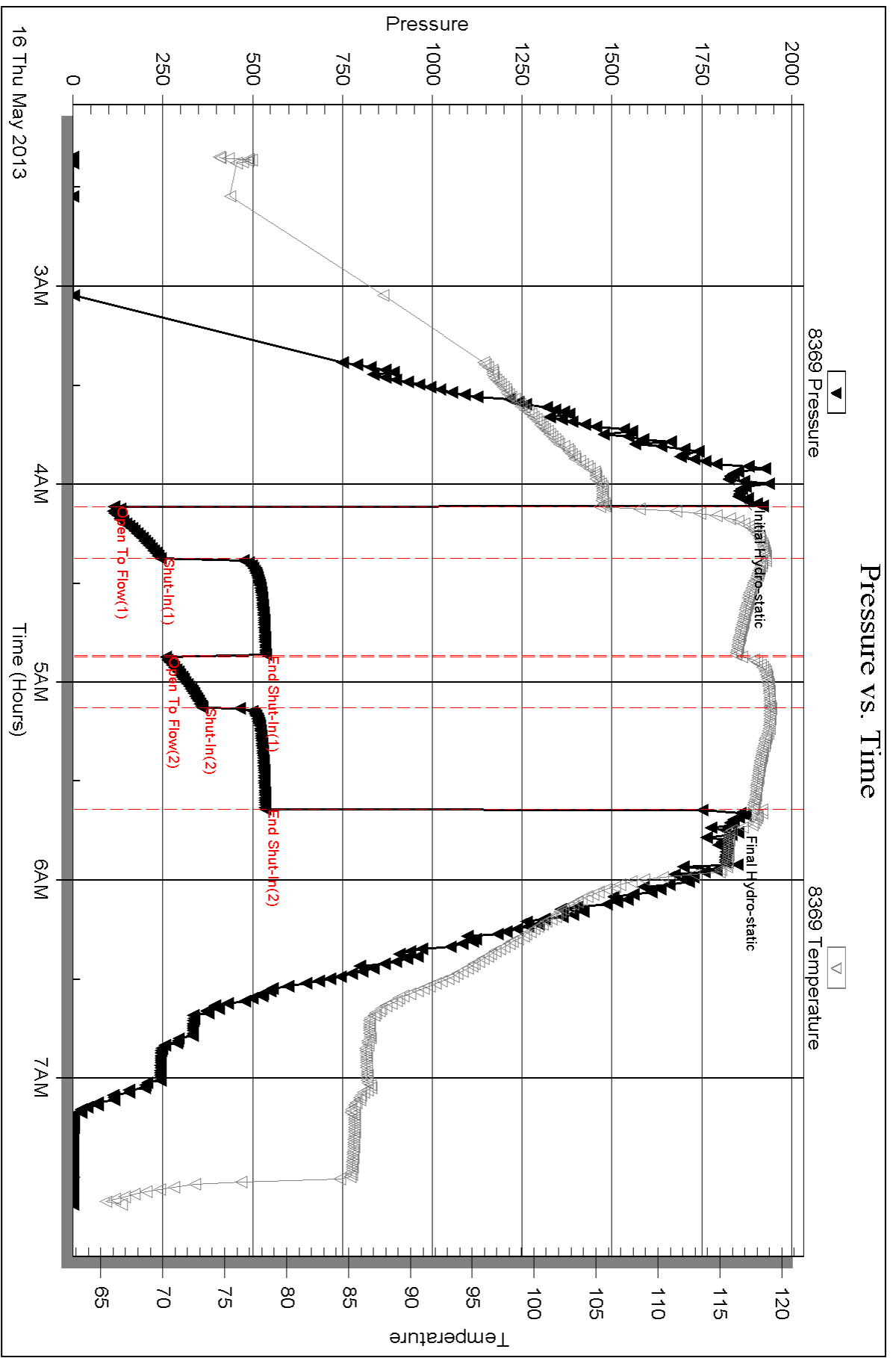
Num Gas Bombs: 0

Serial #:

Laboratory Name:

Laboratory Location:

Recovery Comments: RW .11@73F

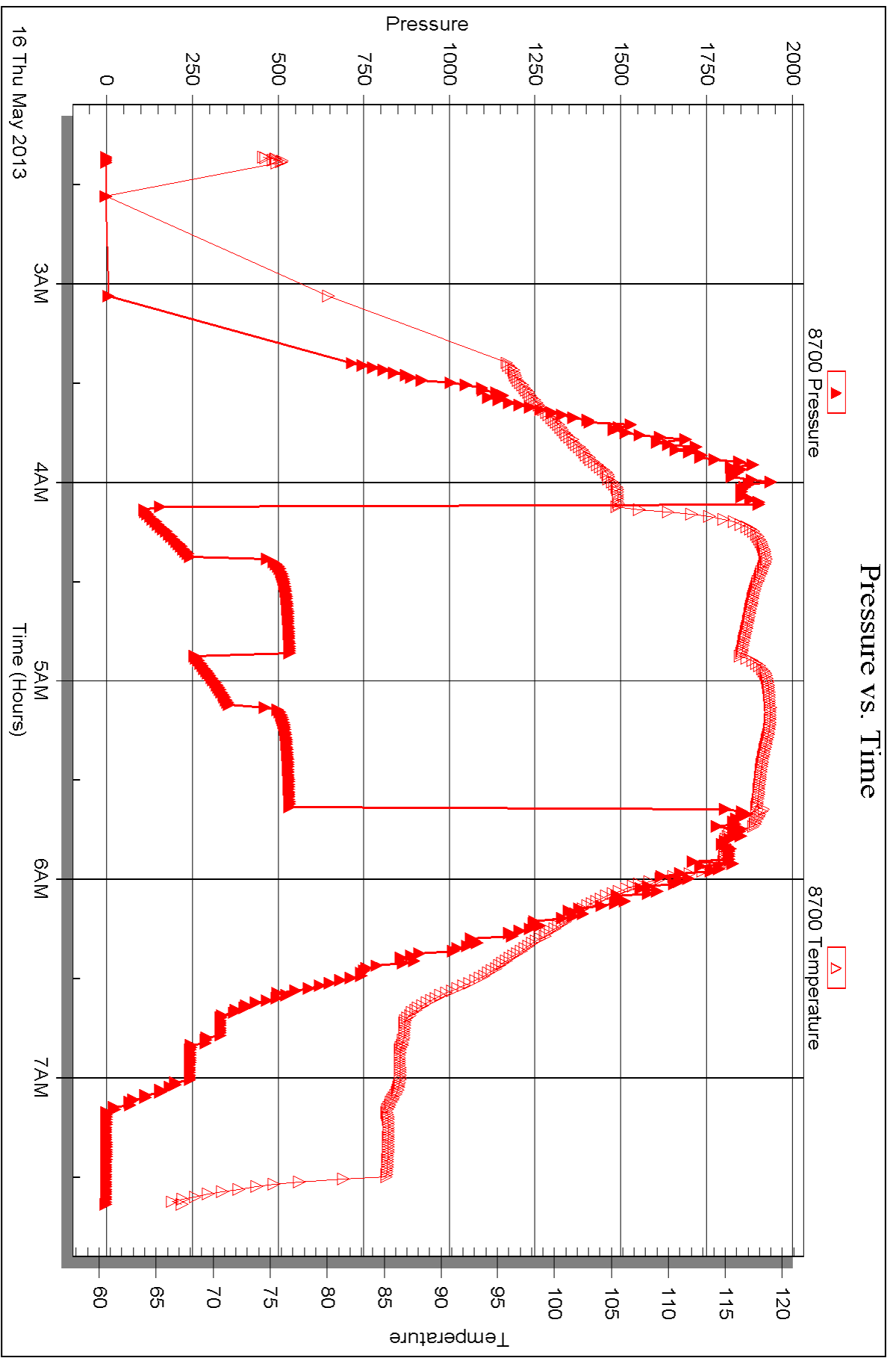


Serial #: 8700

Outside Dow nting-Nelson Oil Co Inc

32-95-23w Graham,KS

DST Test Number: 2





## DRILL STEM TEST REPORT

Prepared For: **Downing-Nelson Oil Co Inc**

PO Box 1019  
Hays KS 67601

ATTN: Ron Nelson

**32-9s-23w Graham,KS**

**Mitchell-Davignon #2-32**

Start Date: 2013.05.16 @ 17:15:07

End Date: 2013.05.16 @ 22:43:31

Job Ticket #: 52077                      DST #: 3

Trilobite Testing, Inc

PO Box 362 Hays, KS 67601

ph: 785-625-4778 fax: 785-625-5620

Printed: 2013.05.22 @ 09:39:01



**TRILOBITE TESTING, INC.**

# DRILL STEM TEST REPORT

Dow ning-Nelson Oil Co Inc

**Mitchell-Davignon #2-32**

PO Box 1019  
Hays KS 67601

**32-9s-23w Graham,KS**

ATTN: Ron Nelson

Job Ticket: 52077

**DST#: 3**

Test Start: 2013.05.16 @ 17:15:07

## GENERAL INFORMATION:

Formation: **LKC- I**

Deviated: No Whipstock: ft (KB)

Time Tool Opened: 18:51:02

Time Test Ended: 22:43:31

Test Type: Conventional Bottom Hole (Reset)

Tester: Ray Schwager

Unit No: 42

**Interval: 3936.00 ft (KB) To 3954.00 ft (KB) (TVD)**

Reference Elevations: 2469.00 ft (KB)

Total Depth: 3954.00 ft (KB) (TVD)

2461.00 ft (CF)

Hole Diameter: 7.88 inches Hole Condition: Fair

KB to GR/CF: 8.00 ft

**Serial #: 8369**

**Inside**

Press @ Run Depth: 30.82 psig @ 3937.00 ft (KB)

Capacity: 8000.00 psig

Start Date: 2013.05.16

End Date:

2013.05.16

Last Calib.:

2013.05.16

Start Time: 17:15:07

End Time:

22:43:31

Time On Btm:

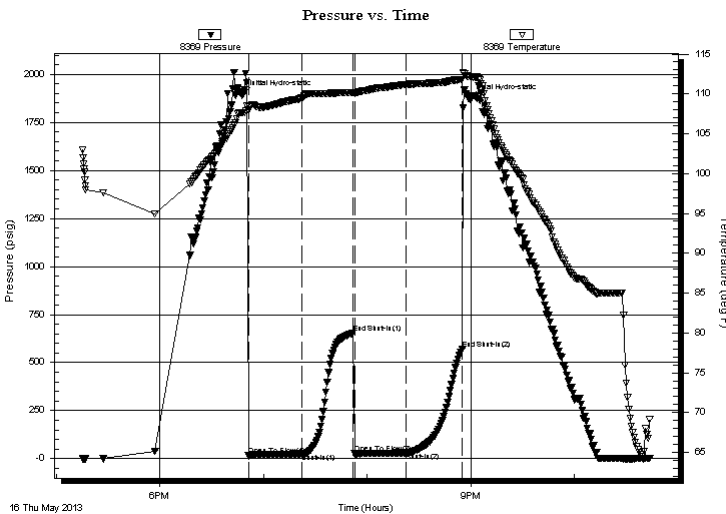
2013.05.16 @ 18:48:02

Time Off Btm:

2013.05.16 @ 20:58:47

**TEST COMMENT:** 30-IFP-w k bl thru-out surface to 1/4" bl  
30-ISIP-no bl  
30-FFP-w k bl thru-out surface to 1/4" bl  
30-FSIP-no bl

## PRESSURE SUMMARY



Time (Min.)	Pressure (psig)	Temp (deg F)	Annotation
0	1894.50	107.66	Initial Hydro-static
3	15.87	107.96	Open To Flow (1)
34	25.76	109.46	Shut-In(1)
64	653.84	110.17	End Shut-In(1)
65	26.33	110.08	Open To Flow (2)
95	30.82	111.16	Shut-In(2)
127	571.14	111.78	End Shut-In(2)
131	1873.60	112.19	Final Hydro-static

## Recovery

Length (ft)	Description	Volume (bbl)
35.00	HO&GCM 5%G20%O75%M	0.22
5.00	CO	0.07
0.00	60'GIP	0.00

\* Recovery from multiple tests

## Gas Rates

Choke (inches)	Pressure (psig)	Gas Rate (Mcf/d)







**TRILOBITE  
TESTING, INC.**

# DRILL STEM TEST REPORT

**TOOL DIAGRAM**

Dow ning-Nelson Oil Co Inc

**Mitchell-Davignon #2-32**

PO Box 1019  
Hays KS 67601

**32-9s-23w Graham,KS**

ATTN: Ron Nelson

Job Ticket: 52077

**DST#: 3**

Test Start: 2013.05.16 @ 17:15:07

## Tool Information

Drill Pipe:	Length: 3890.00 ft	Diameter: 3.80 inches	Volume: 54.57 bbl	Tool Weight:	2200.00 lb
Heavy Wt. Pipe:	Length: 0.00 ft	Diameter: 0.00 inches	Volume: 0.00 bbl	Weight set on Packer:	25000.00 lb
Drill Collar:	Length: 30.00 ft	Diameter: 2.25 inches	Volume: 0.15 bbl	Weight to Pull Loose:	60000.00 lb
			<u>Total Volume: 54.72 bbl</u>	Tool Chased	0.00 ft
Drill Pipe Above KB:	5.00 ft			String Weight: Initial	44000.00 lb
Depth to Top Packer:	3936.00 ft			Final	44000.00 lb
Depth to Bottom Packer:	ft				
Interval between Packers:	18.00 ft				
Tool Length:	39.00 ft				
Number of Packers:	2	Diameter: 6.75 inches			
Tool Comments:					

## Tool Description

Tool Description	Length (ft)	Serial No.	Position	Depth (ft)	Accum. Lengths
Change Over Sub	1.00			3916.00	
Shut In Tool	5.00			3921.00	
Hydraulic tool	5.00			3926.00	
Packer	5.00			3931.00	21.00 Bottom Of Top Packer
Packer	5.00			3936.00	
Stubb	1.00			3937.00	
Recorder	0.00	8369	Inside	3937.00	
Recorder	0.00	8700	Outside	3937.00	
Perforations	14.00			3951.00	
Bullnose	3.00			3954.00	18.00 Bottom Packers & Anchor
<b>Total Tool Length:</b>	<b>39.00</b>				



**TRILOBITE  
TESTING, INC.**

**DRILL STEM TEST REPORT**

**FLUID SUMMARY**

Dow ning-Nelson Oil Co Inc

**Mitchell-Davignon #2-32**

PO Box 1019  
Hays KS 67601

**32-9s-23w Graham,KS**

Job Ticket: 52077

**DST#: 3**

ATTN: Ron Nelson

Test Start: 2013.05.16 @ 17:15:07

**Mud and Cushion Information**

Mud Type: Gel Chem

Cushion Type:

Oil API:

deg API

Mud Weight: 9.00 lb/gal

Cushion Length:

ft

Water Salinity:

ppm

Viscosity: 65.00 sec/qt

Cushion Volume:

bbbl

Water Loss: 7.55 in<sup>3</sup>

Gas Cushion Type:

Resistivity: ohm.m

Gas Cushion Pressure:

psig

Salinity: 1000.00 ppm

Filter Cake: 1.00 inches

**Recovery Information**

Recovery Table

Length ft	Description	Volume bbbl
35.00	HO&GCM 5%G20%O75%M	0.218
5.00	CO	0.070
0.00	60'GIP	0.000

Total Length: 40.00 ft      Total Volume: 0.288 bbl

Num Fluid Samples: 0

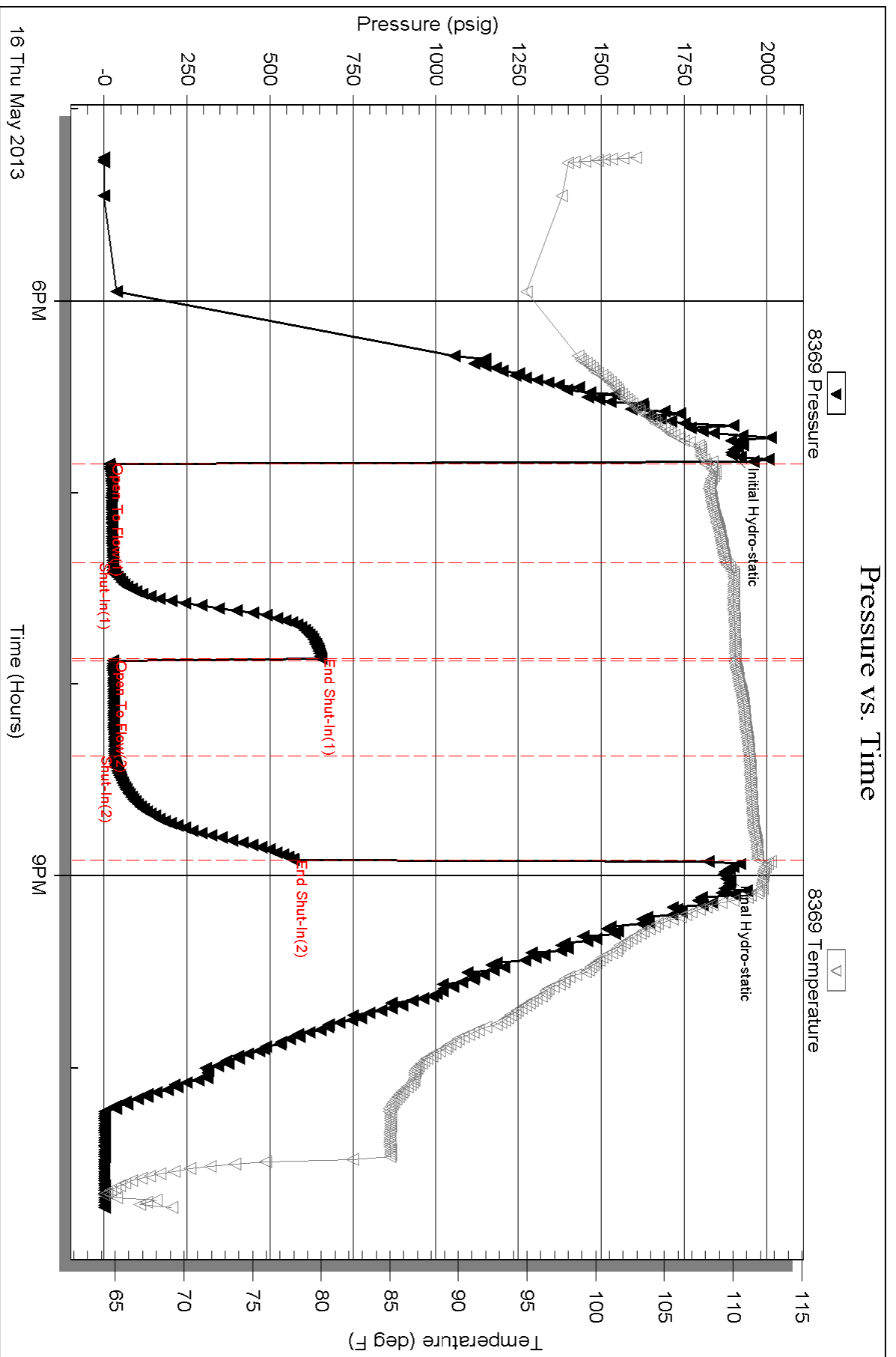
Num Gas Bombs: 0

Serial #:

Laboratory Name:

Laboratory Location:

Recovery Comments:

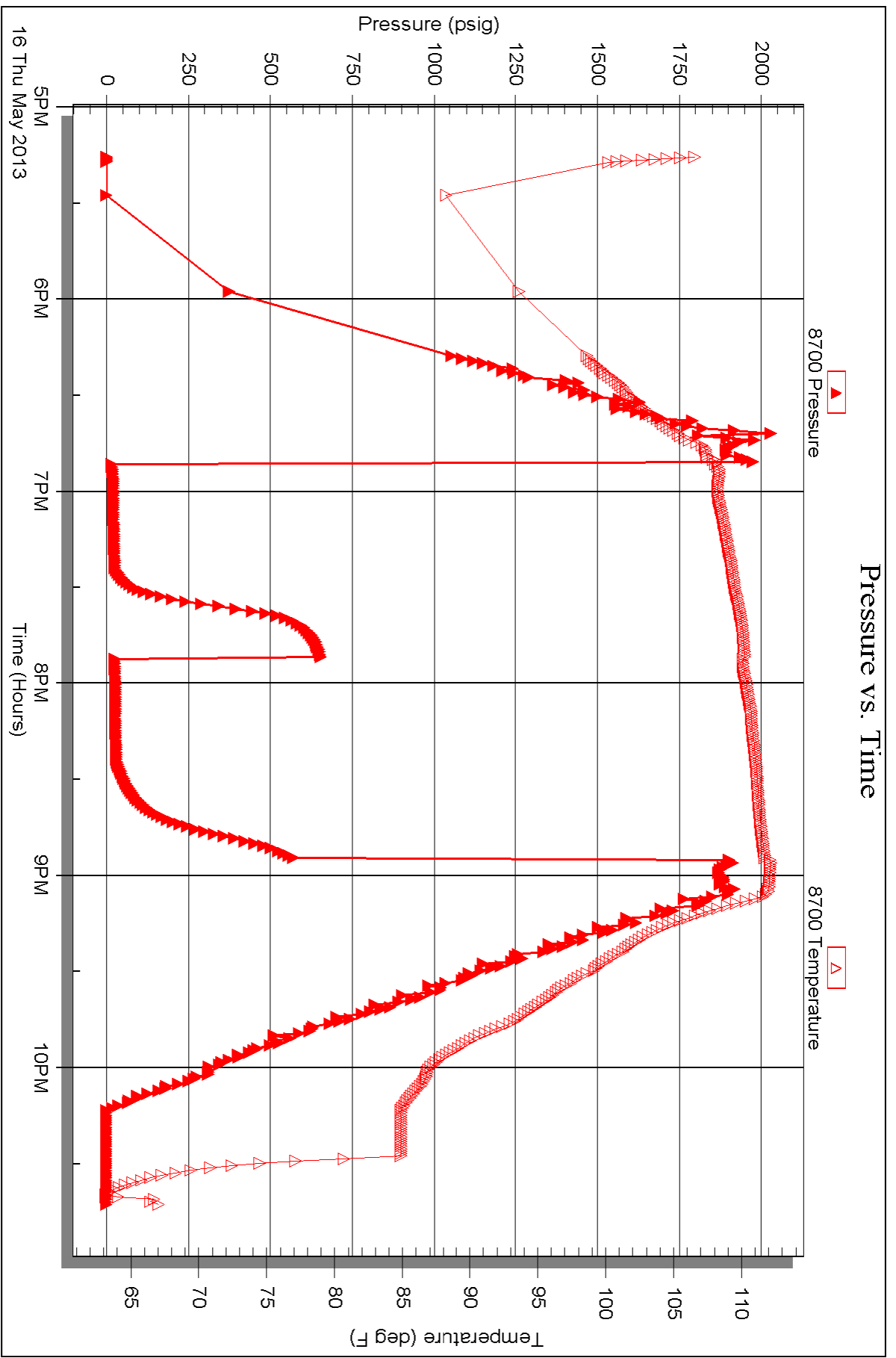


Serial #: 8700

Outside Dow nging-Nelson Oil Co Inc

32-95-23w Graham,KS

DST Test Number: 3





# TRILOBITE TESTING INC.

1515 Commerce Parkway • Hays, Kansas 67601

## Test Ticket

NO. 52575

Well Name & No. Mitchell-Davignon #2-32 Test No. 1 Date 5-15-13  
 Company Downing-Nelson Oil Co Inc Elevation 2469 KB 2461 GL  
 Address PO Box 1019 Hays, Ks 67601  
 Co. Rep / Geo. MARC Downing Rig DISCOVERY RIG 1  
 Location: Sec. 32 Twp. 9<sup>s</sup> Rge. 23<sup>w</sup> Co. GRAHAM State Ks

Interval Tested 3805-3856 Zone Tested LKC C-D  
 Anchor Length 51 Drill Pipe Run 3764 Mud Wt. 9  
 Top Packer Depth 3800 Drill Collars Run 30 Vis 70  
 Bottom Packer Depth 3805 Wt. Pipe Run - WL 7.6  
 Total Depth 3856 Chlorides 800 ppm System LCM 1 1/2 #

Blow Description IFP - WEAK TO STRONG IN 8 MIN  
ISIP - NO BLOW  
FFP - WEAK TO A GOOD BLOW 1/4" TO 8" BLOW  
FSTIP - NO BLOW

Rec	Feet of	%gas	%oil	%water	%mud
<u>300</u>	<u>GIP</u>				
<u>25</u>	<u>CO</u>				
<u>230</u>	<u>O+6 CMW</u>	<u>10</u>	<u>10</u>	<u>45</u>	<u>35</u>
<u>120</u>	<u>50+6 CMW</u>	<u>5</u>	<u>3</u>	<u>72</u>	<u>20</u>
<u>600</u>	<u>WATER</u>				

Rec Total 975 BHT 118 Gravity 40 API RW .07 @ 79 °F Chlorides 101000 ppm

(A) Initial Hydrostatic 1826  Test 1150 T-On Location 1210  
 (B) First Initial Flow 105  Jars T-Started 1245  
 (C) First Final Flow 317  Safety Joint T-Open 1405  
 (D) Initial Shut-In 759  Circ Sub T-Pulled 1635  
 (E) Second Initial Flow 336  Hourly Standby T-Out 1905  
 (F) Second Final Flow 488  Mileage 102 RT 158.10  
 (G) Final Shut-In 761  Sampler  
 (H) Final Hydrostatic 1797  Straddle  
 Shale Packer  
 Shale Packer  
 Extra Packer  
 Extra Recorder  
 Day Standby  
 Accessibility

Initial Open 30  
 Initial Shut-In 45  
 Final Flow 30  
 Final Shut-In 45  
 Sub Total 0  
 Total 1308.10  
 MP/DST Disc't

Approved By \_\_\_\_\_ Our Representative RAY SCHWAGER *Thank you*

Trilobite Testing Inc. shall not be liable for damaged of any kind of the property or personnel of the one for whom a test is made, or for any loss suffered or sustained, directly or indirectly, through the use of its equipment, or its statements or opinion concerning the results of any test, tools lost or damaged in the hole shall be paid for at cost by the party for whom the test is made.



# TRILOBITE TESTING INC.

1515 Commerce Parkway • Hays, Kansas 67601

## Test Ticket

NO. 52076

Well Name & No. Mitchell-Davignon #2-32 Test No. 2 Date 5-16-13  
 Company Downing-Nelson Oil Co Inc Elevation 2469 KB 2461 GL  
 Address PO Box 1019 Hays, Ks 67601  
 Co. Rep / Geo. MARC Downing Rig Discovery 1191  
 Location: Sec. 32 Twp. 9<sup>s</sup> Rge. 23<sup>w</sup> Co. GRAHAM State K

Interval Tested 3850-3880 Zone Tested LKC E-F  
 Anchor Length 30 Drill Pipe Run 3820 Mud Wt. 9  
 Top Packer Depth 3845 Drill Collars Run 30 Vis 70  
 Bottom Packer Depth 3850 Wt. Pipe Run — WL 7.6  
 Total Depth 3880 Chlorides 800 ppm System LCM 1 1/2#

Blow Description IFF - WEAK TO STRONG IN 2 MIN  
TSTIP - NO BLOW  
FFP - WEAK TO STRONG IN 4 MIN  
FSIP - NO BLOW

Rec	Feet of	%gas	%oil	%water	%mud
<u>60</u>	<u>GIP</u>				
<u>60</u>	<u>MW w/show of oil</u>			<u>75</u>	<u>25</u>
<u>630</u>	<u>WATER</u>				
Rec	Feet of	%gas	%oil	%water	%mud
Rec	Feet of	%gas	%oil	%water	%mud

Rec Total 690 BHT 117 Gravity — API RW .11 @ 73 °F Chlorides 74000 ppm  
 (A) Initial Hydrostatic 1851  Test 1150 T-On Location 0140  
 (B) First Initial Flow 115  Jars \_\_\_\_\_ T-Started 0220  
 (C) First Final Flow 244  Safety Joint \_\_\_\_\_ T-Open 0405  
 (D) Initial Shut-In 535  Circ Sub \_\_\_\_\_ T-Pulled 0535  
 (E) Second Initial Flow 259  Hourly Standby \_\_\_\_\_ T-Out 0738  
 (F) Second Final Flow 360  Mileage 158.10 Comments \_\_\_\_\_  
 (G) Final Shut-In 534  Sampler \_\_\_\_\_  
 (H) Final Hydrostatic 1828  Straddle \_\_\_\_\_  Ruined Shale Packer \_\_\_\_\_  
 Shale Packer \_\_\_\_\_  Ruined Packer \_\_\_\_\_  
 Extra Packer \_\_\_\_\_  Extra Copies \_\_\_\_\_  
 Extra Recorder \_\_\_\_\_ Sub Total 0  
 Day Standby \_\_\_\_\_ Total 1308.10  
 Accessibility \_\_\_\_\_ MP/DST Disc't \_\_\_\_\_

Initial Open 15  
 Initial Shut-In 30  
 Final Flow 15  
 Final Shut-In 30

Sub Total 1308.10

Approved By \_\_\_\_\_

Our Representative Ray Schwager

*thank you*

Trilobite Testing Inc. shall not be liable for damaged of any kind of the property or personnel of the one for whom a test is made, or for any loss suffered or sustained, directly or indirectly, through the use of its equipment, or its statements or opinion concerning the results of any test, tools lost or damaged in the hole shall be paid for at cost by the party for whom the test is made.



# TRILOBITE TESTING INC.

1515 Commerce Parkway • Hays, Kansas 67601

## Test Ticket

NO. 52077

Well Name & No. Mitchell-Daivignon #2-32 Test No. 3 Date 5-16-13  
 Company Downing-Nelson Oil Co Inc Elevation 2469 KB 2461 GL  
 Address PO Box 1019 Hays, Ks 67601  
 Co. Rep / Geo. MARC Downing Rig Discovery rig 1  
 Location: Sec. 32 Twp. 9<sup>s</sup> Rge. 23<sup>w</sup> Co. GRAHAM State K

Interval Tested 3936-3954 Zone Tested LKC I  
 Anchor Length 18 Drill Pipe Run 3890 Mud Wt. 9.3  
 Top Packer Depth 3931 Drill Collars Run 30 Vis 65  
 Bottom Packer Depth 3936 Wt. Pipe Run - WL 7.6  
 Total Depth 3954 Chlorides 1000 ppm System LCM 1 1/2#

Blow Description IFP - WEAK Blow thru-out surface To 1/4" Blow  
ISTP - NO Blow  
FFP - WEAK Blow thru-out surface To 1/4" Blow  
FSIP - NO Blow

Rec	Feet of	%gas	%oil	%water	%mud
<u>60</u>	<u>GIP</u>				
<u>5</u>	<u>CO</u>				
<u>35</u>	<u>HO + 6 CM</u>	<u>5</u>	<u>20</u>		<u>75</u>

Rec Total 40 BHT 111 Gravity - API RW - @ - ° F Chlorides - ppm

(A) Initial Hydrostatic 1894  Test 1150 T-On Location 1700  
 (B) First Initial Flow 15  Jars - T-Started 1715  
 (C) First Final Flow 25  Safety Joint - T-Open 1855  
 (D) Initial Shut-In 653  Circ Sub - T-Pulled 2055  
 (E) Second Initial Flow 26  Hourly Standby - T-Out 2243  
 (F) Second Final Flow 30  Mileage 316.20 Comments -  
 (G) Final Shut-In 571  Sampler - loaded tools 14:30 5/17  
 (H) Final Hydrostatic 1873  Straddle -  Ruined Shale Packer -  
 Shale Packer -  Ruined Packer -

Initial Open 30  Extra Packer -  Extra Copies -  
 Initial Shut-In 30  Extra Recorder - Sub Total 0  
 Final Flow 30  Day Standby - Total 1466.20  
 Final Shut-In 30  Accessibility - MP/DST Disc't -  
 Sub Total 1466.20

Approved By \_\_\_\_\_ Our Representative RAY SWAGAN THANK YOU  
 Trilobite Testing Inc. shall not be liable for damaged of any kind of the property or personnel of the one for whom a test is made, or for any loss suffered or sustained, directly or indirectly, through the use of its equipment, or its statements or opinion concerning the results of any test, tools lost or damaged in the hole shall be paid for at cost by the party for whom the test is made.