

T21S, R6W, 6th P.M.

2 Sandstones, UELS Alum. Cap 0.3' Below Ground
 NAD 27 Kansas South
 N: 570222.33
 E: 2139569.42

SGOMI

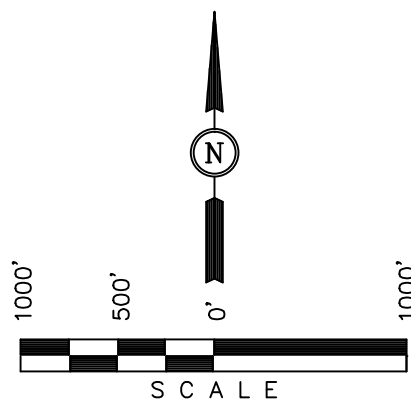
Well location, HEDRICK 2106 #19-1H, located as shown in the SE 1/4 NE 1/4 of Section 19, T21S, R6W, 6th P.M., Rice County, Kansas.

BASIS OF ELEVATION

SPOT ELEVATION LOCATED AT THE SW CORNER OF SECTION 18, T23S, R8W, 6th P.M. TAKEN FROM THE ALDEN SE, QUADRANGLE, KANSAS, RENO COUNTY, 7.5 MINUTE QUAD (TOPOGRAPHIC MAP) PUBLISHED BY THE UNITED STATES DEPARTMENT OF THE INTERIOR, GEOLOGICAL SURVEY, SAID ELEVATION IS MARKED AS BEING 1688 FEET.

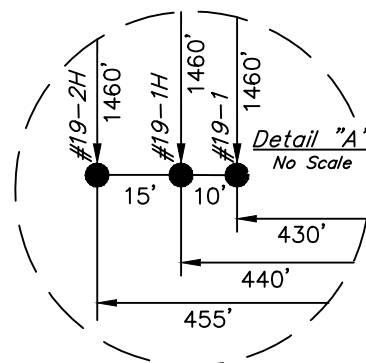
BASIS OF BEARINGS

BASIS OF BEARINGS IS A G.P.S. OBSERVATION.



LEGEND:

- └─┘ = 90° SYMBOL
- = PROPOSED WELL HEAD.
- ▲ = SECTION CORNERS LOCATED.



NAD 83 (#19-1H SURFACE LOCATION)	
LATITUDE	= 38°12'47.01" (38.213058)
LONGITUDE	= 98°00'56.72" (98.015756)
NAD 27 (#19-1H SURFACE LOCATION)	
LATITUDE	= 38°12'46.97" (38.213047)
LONGITUDE	= 98°00'55.53" (98.015425)
STATE PLANE NAD 27 (KANSAS SOUTH)	
N:	563427.56
E:	2139227.69
NAD 83 (#19-1H AS-DRILLED BOTTOM HOLE)	
LATITUDE	= 38°13'26.81" (38.224114)
LONGITUDE	= 98°00'57.28" (98.015911)
NAD 27 (#19-1H AS-DRILLED BOTTOM HOLE)	
LATITUDE	= 38°13'26.77" (38.224103)
LONGITUDE	= 98°00'56.09" (98.015581)
STATE PLANE NAD 27 (KANSAS SOUTH)	
N:	567453.23
E:	2139162.39

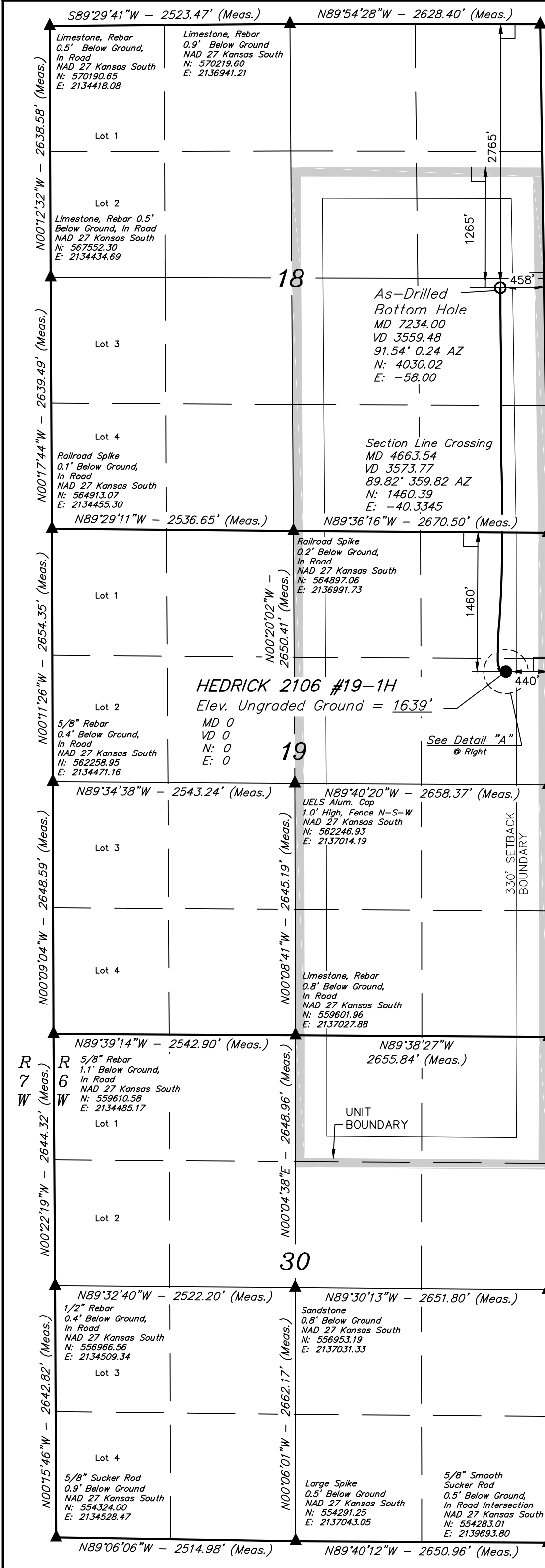
CERTIFICATE

THIS IS TO CERTIFY THAT THE ABOVE PLAT WAS PREPARED FROM FIELD NOTES OF ACTUAL SURVEYS MADE BY ME OR UNDER MY SUPERVISION AND THAT THE SAME ARE TRUE AND CORRECT TO THE BEST OF MY KNOWLEDGE AND BELIEF.

REGISTERED LAND SURVEYOR
 REGISTRATION NO. 1451
 STATE OF KANSAS

UINTAH ENGINEERING & LAND SURVEYING
 85 SOUTH 200 EAST - VERNAL, UTAH 84078
 (435) 789-1017

SCALE 1" = 1000'	DATE SURVEYED: 08-15-12	DATE DRAWN: 06-13-13
PARTY J.P. C.B. S.S.	REFERENCES G.L.O. PLAT	
WEATHER HOT	FILE SGOMI	



HEDRICK 2106 #19-1H
 Elev. Ungraded Ground = 1639'

See Detail "A"
 Right

330' SEIBACK BOUNDARY

UNIT BOUNDARY

R
6
W

30

18