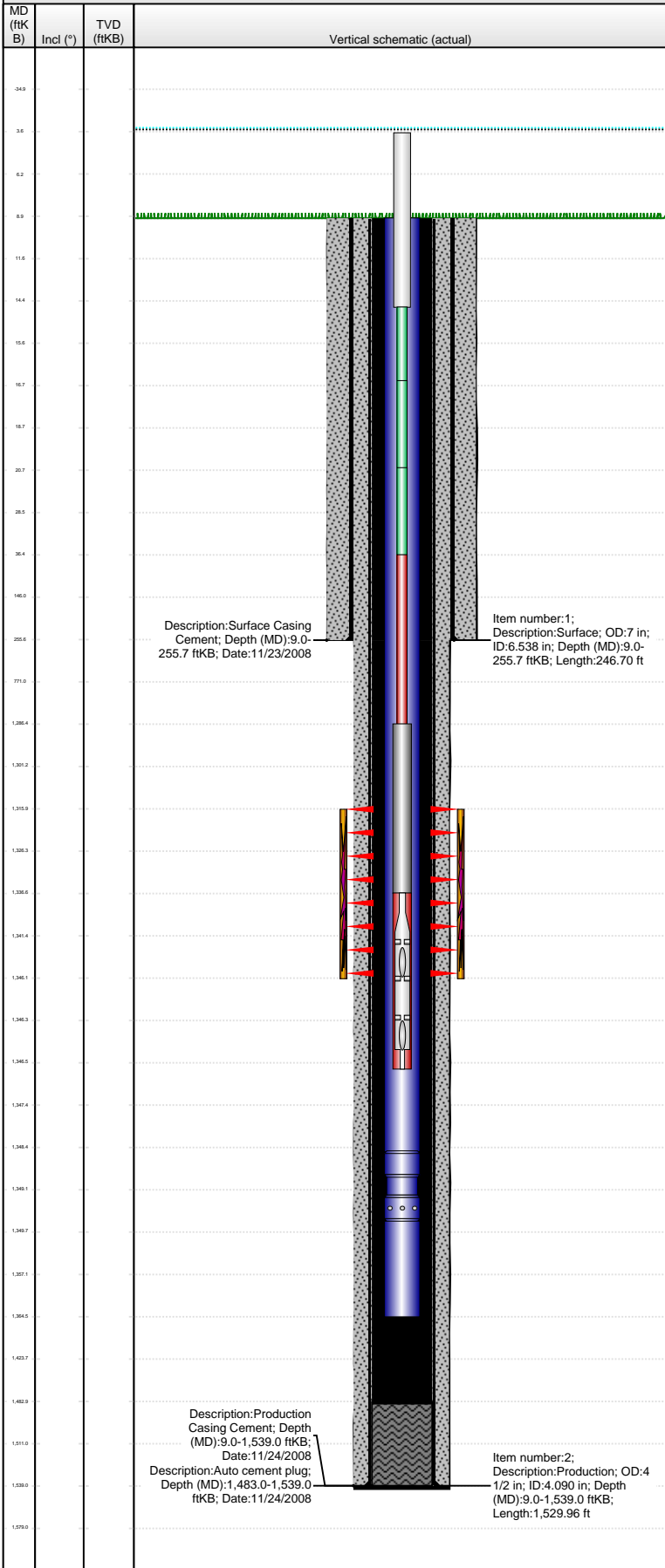


Well Name: **COOK FARMS 24-09**

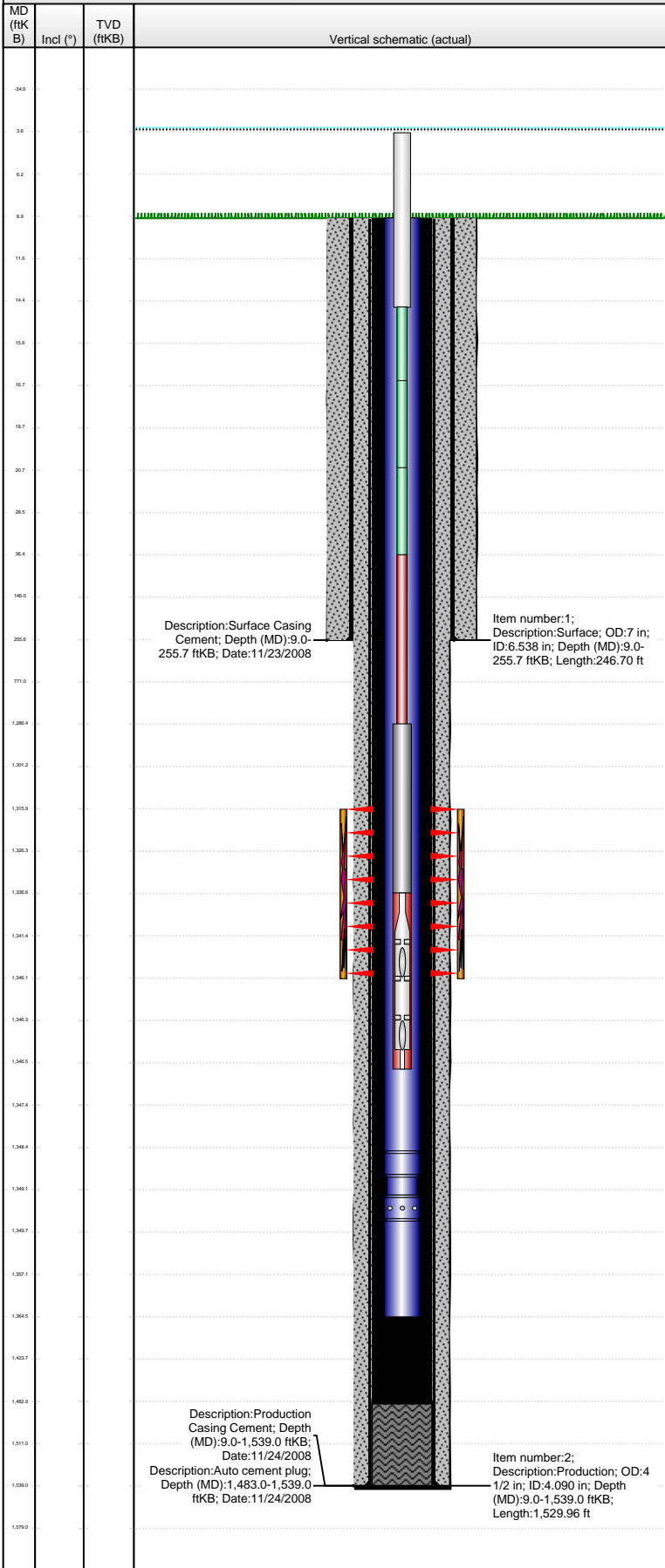
VERTICAL - Original Hole, 3/18/2013 8:06:32 AM



Well Header							
API	Business Unit	District	Well Config				
15-023-21186	ROCKIES	12	VERTICAL				
Original KB Elevation (ft)	KB - GL / MSL (ftKB)	Spud Date	P & A Date				
3,391.00	9.00	11/23/2008					
Comment							
Directions To Well							
ROAD 25 & V, 1 1/4 MILE NORTH, 1/4 EAST, NORTH INTO							
Congressional Location							
Quarter 1	Quarter 2	Quarter 3	Quarter 4	Section	Township	Twnshp N...	Range Rng E/W Dir
NE	SW	SE	SW	9	2 S		38 W
Bottom Hole Location							
North-South Distance (ft)		From N or S Line		East-West Distance (ft)		From E or W Line	
Plug Back Total Depths							
Date	Depth (ftKB)	Method			Com		
11/24/2008	1,498.0	CASING TALLY					
11/24/2009	1,483.0	CASED HOLE LOG			CBL		
Wellbore Sections							
Section Des		Size (in)	Act Top (ftKB)		Act Btm (ftKB)		
SURFACE		9 7/8	9.0		259.0		
PRODUCTION		6 1/4	259.0		1,542.0		
Zone Statuses							
Zone Name	Status Date	Status		Job			
NIOBRARA	12/11/2009	PR		DRILLING/COMPLETION - ORIGINAL, 11/23/2008 10:00			
Casing Strings							
Surface, 255.7ftKB							
Casing Description	Run Date	OD (in)	Wt/Len (L...)	Grade	Top (ftKB)	MD (ftKB)	
Surface	11/23/2008	7	17.00		9.0	255.7	
Production, 1,539.0ftKB							
Casing Description	Run Date	OD (in)	Wt/Len (L...)	Grade	Top (ftKB)	MD (ftKB)	
Production	11/24/2008	4 1/2	9.50	J-55	9.0	1,539.0	
Cement							
Description					Top Depth (ftKB)	Bottom Depth (ftKB)	
Surface Casing Cement					9.0	255.7	
Description					Top Depth (ftKB)	Bottom Depth (ftKB)	
Production Casing Cement					9.0	1,539.0	
Tubing Components							
Item Des	OD (in)	Wt (lb/ft)	Grade	Jts	Len (ft)	Btm (ftKB)	Btm (TVD) (ftKB)
Tubing	2 3/8	4.70	J-55	43	1,339.48	1,348.5	
Pump Seating Nipple	2 3/8			1	1.10	1,349.6	1,349.2
Mud Joint	2 3/8	4.70	J-55	1	15.00	1,364.6	1,364.2
Rods & Pumps							
Rod Description					Run Date	Set Depth (ftKB)	
Rod					1/4/2010	1,346.6	
Comment							
Item Description					OD Nominal (in)	Joints	Length (ft)
Polished Rod					1 1/8	1	11.00
Item Description					OD Nominal (in)	Joints	Length (ft)
Pony Rod					5/8	1	2.00
Item Description					OD Nominal (in)	Joints	Length (ft)
Pony Rod					5/8	1	4.00
Item Description					OD Nominal (in)	Joints	Length (ft)
Pony Rod					5/8	2	16.00
Item Description					OD Nominal (in)	Joints	Length (ft)
Sucker Rod					5/8	50	1,250.00
Item Description					OD Nominal (in)	Joints	Length (ft)
Rod Guide					2	100	
Item Description					OD Nominal (in)	Joints	Length (ft)
Sinker Bar					1 1/4	2	50.00
Item Description					OD Nominal (in)	Joints	Length (ft)
Rod Insert Pump					1 1/4	1	10.00
API Pump Type			Barrel Length (ft)	Seating Assembly Type			
R			10.00	C			
Perforation Data							
Zone		Bnch/St g	Entered Shot Total	Top (ftKB)	Btm (ftKB)	Date	
NIOBRARA, Original Hole		01	90	1,316.00	1,346.00	11/24/2009	

Well Name: **COOK FARMS 24-09**

VERTICAL - Original Hole, 3/18/2013 8:06:33 AM



Stimulations & Treatments				
Date	Zone	Primary Job Type		
11/30/2009	NIOBRARA, Original Hole			
Technical Result	Tech Result Details	Tech Result Note		
Success	According to Plan			
Comment				
20 TON FRAC, 90100LBS 16/30 ARIZONA SAND 10000LBS ROZEN COATED SAND BLOW BACK TO PIT ON .250 CHOKE				
Other In Hole				
Run Date	Des	OD (in)	Top (ftKB)	Btm (ftKB)
Logs				
Date	Type	Top (ftKB)	Btm (ftKB)	
11/24/2008	DIFL/DENS/GR/GRD/CAL	256.0	1,537.0	
11/24/2008	TRIPLE COMBO	256.0	1,537.0	
11/24/2009	PERFORATION	1,316.0	1,346.0	
11/24/2009	CBL/CCL/GR	100.0	1,483.0	