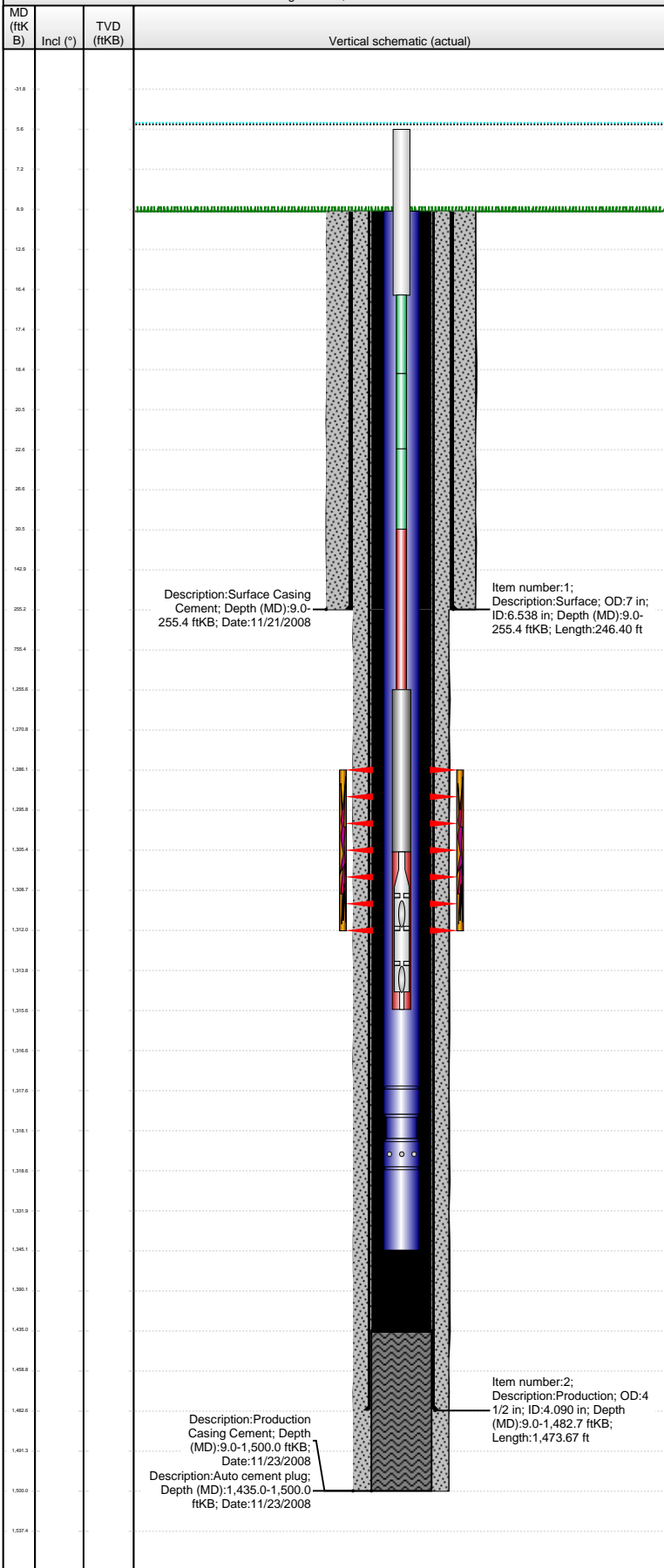


Well Name: **COOK FARMS 14-09**

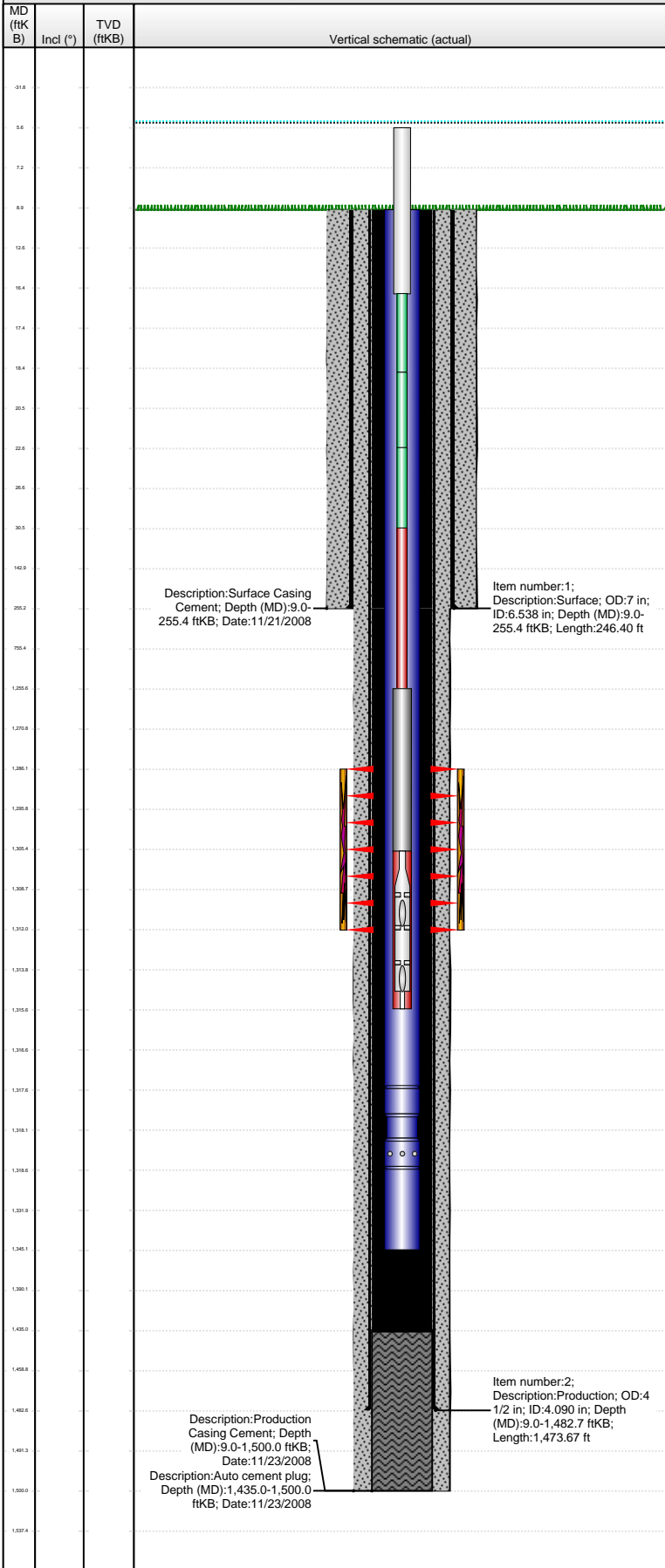
VERTICAL - Original Hole, 3/18/2013 8:05:52 AM



Well Header									
API 15-023-21190		Business Unit ROCKIES		District 12		Well Config VERTICAL			
Original KB Elevation (ft) 3,366.00		KB - GL / MSL (ftKB) 9.00		Spud Date 11/21/2008		P & A Date			
Comment									
Directions To Well ROAD 25 & V, 1 1/4 MILE NORTH, 1/4 EAST, NORTH INTO									
Congressional Location									
Quarter 1 W2	Quarter 2 SE	Quarter 3 SW	Quarter 4 SW	Section 9	Township 2 S	Twnshp N...	Range 38	Rng E/W Dir W	
Bottom Hole Location									
North-South Distance (ft)		From N or S Line		East-West Distance (ft)		From E or W Line			
Plug Back Total Depths									
Date	Depth (ftKB)	Method			Com				
11/22/2008	1,442.5	CASING TALLY							
11/24/2009	1,435.0	CASED HOLE LOG			CBL				
Wellbore Sections									
Section Des		Size (in)		Act Top (ftKB)		Act Btm (ftKB)			
SURFACE		9 7/8		9.0		259.0			
PRODUCTION		6 1/4		259.0		1,500.0			
Zone Statuses									
Zone Name	Status Date	Status		Job					
NIOBRARA	12/11/2009	PR		DRILLING/COMPLETION - ORIGINAL, 11/21/2008 14:30					
Casing Strings									
Surface, 255.4ftKB									
Casing Description	Run Date	OD (in)	Wt/Len (l...)	Grade	Top (ftKB)	MD (ftKB)			
Surface	11/21/2008	7	17.00		9.0	255.4			
Production, 1,482.7ftKB									
Casing Description	Run Date	OD (in)	Wt/Len (l...)	Grade	Top (ftKB)	MD (ftKB)			
Production	11/23/2008	4 1/2	9.50	J-55	9.0	1,482.7			
Cement									
Description					Top Depth (ftKB)		Bottom Depth (ftKB)		
Surface Casing Cement					9.0		255.4		
Description					Top Depth (ftKB)		Bottom Depth (ftKB)		
Production Casing Cement					9.0		1,500.0		
Tubing Components									
Item Des	OD (in)	Wt (lb/ft)	Grade	Jts	Len (ft)	Btm (ftKB)	Btm (TVD) (ftKB)		
Tubing	2 3/8	4.70	J-55	42	1,308.43	1,317.4	1,317.4		
Pump Seating Nipple	2 3/8			1	1.10	1,318.5	1,318.4		
Mud Joint	2 3/8	4.70	J-55	1	26.65	1,345.2	1,345.1		
Rods & Pumps									
Rod Description					Run Date		Set Depth (ftKB)		
Rod					1/5/2010		1,315.5		
Comment									
Item Description					OD Nominal (in)	Joints	Length (ft)		
Polished Rod					1 1/8		11.00		
Item Description					OD Nominal (in)	Joints	Length (ft)		
Pony Rod					5/8	1	2.00		
Item Description					OD Nominal (in)	Joints	Length (ft)		
Pony Rod					5/8	1	4.00		
Item Description					OD Nominal (in)	Joints	Length (ft)		
Pony Rod					5/8	1	8.00		
Item Description					OD Nominal (in)	Joints	Length (ft)		
Sucker Rod					5/8	49	1,225.00		
Item Description					OD Nominal (in)	Joints	Length (ft)		
Rod Guide					2	100			
Item Description					OD Nominal (in)	Joints	Length (ft)		
Sinker Bar					1 1/4	2	50.00		
Item Description					OD Nominal (in)	Joints	Length (ft)		
Rod Insert Pump					1 1/4		10.00		
API Pump Type				Barrel Length (ft)		Seating Assembly Type			
R				10.00		C			
Perforation Data									
Zone		Bnch/St g	Entered Shot Total	Top (ftKB)	Btm (ftKB)		Date		
NIOBRARA, Original Hole		01	78	1,286.00	1,312.00		11/24/2009		

Well Name: COOK FARMS 14-09

VERTICAL - Original Hole, 3/18/2013 8:05:53 AM



Stimulations & Treatments

Date	Zone	Primary Job Type
11/30/2009	NIOBRARA, Original Hole	DRILLING/COMPLETION - ORIGINAL
Technical Result	Tech Result Details	Tech Result Note
Failure	Screen-Out	
Comment		
FRAC,BLOW BACK TO PIT ON .250 CHOKE		

Other In Hole

Run Date	Des	OD (in)	Top (ftKB)	Btm (ftKB)

Logs

Date	Type	Top (ftKB)	Btm (ftKB)
11/23/2008	DIFL/DENS/GR/GRD/CAL	256.0	1,496.0
11/23/2008	TRIPLE COMBO	256.0	1,496.0
11/24/2009	CBL/CCL/GR	100.0	1,435.0
11/24/2009	PERFORATION	1,286.0	1,312.0